



ශ්‍රී ලංකා රබර් පර්යේෂණායතනය

**RUBBER RESEARCH INSTITUTE  
OF SRI LANKA**



**2017**

**වාර්ෂික වාර්තාව**  
**Annual Report**

# **Rubber Research Institute of Sri Lanka**

## **Dartonfield, Agalawatta**

### **Vision**

*The Institute's vision is to emerge as the centre of excellence in providing high quality scientific technologies to the rubber industry.*

### **Mission**

*The Institute's mission is to revitalize the rubber sector by developing economically and environmentally sustainable innovations and transferring the latest technologies to the stakeholders through training and advisory services.*

### **Objectives**

- *Increase productivity to international standards*
- *Increase national production of NR to meet the increasing demand*
- *Optimal and sustainable utilization of land, labour and other resources*
- *Maximize domestic value addition to natural rubber*
- *Encourage individual competency and self development of RRISL personnel and in the process, improve the organizational effectiveness of the institute*

### **Policies**

- *Continuation of the research and extension activities on all aspects of rubber production and processing*
- *Continue to promote environmentally friendly and sustainable agricultural industry*
- *Transfer the developed technologies through training and advisory services*

## About us

*The origin of rubber research in Sri Lanka goes back to 1909, when a group of planters in the Kalutara district got the service of a chemist to study the coagulation of rubber. This was later expanded to form a Rubber Research Scheme in 1913 and then named as the Rubber Research Institute of Ceylon (now Sri Lanka) in 1951 showing that the Rubber Research Institute of Sri Lanka (RRISL) is the oldest Research Institute on rubber in the world. It has a proud record of service to the industry, in plant breeding, agro-management practices and the chemistry of raw rubber.*

*RRISL is the nodal agency in Sri Lanka charged with the statutory responsibility for research and development on all aspects of rubber cultivation and processing for the benefit of the rubber industry. The institute specializes in rubber research, both in the biology of the crop and the chemistry of the natural rubber and the technology of the product. Further, the institute is committed towards technology transfer activities and training of extension personnel and the other stakeholders. Accordingly, it has five biological research departments i.e. Plant Science, Genetics & Plant Breeding, Plant Pathology & Microbiology, Soils & Plant Nutrition and Biochemistry & Plant Physiology and four chemistry departments i.e. Raw Rubber Processing Development & Chemical Engineering, Raw Rubber & Chemical Analysis, Polymer Chemistry and Raw Rubber Technology & Development and the Advisory Services Department for technology transfer together with units for Adaptive Research, Biometry, Agricultural Economics, Audio Visual & Information Technology and Library.*



**RUBBER RESEARCH BOARD OF SRI LANKA**  
**ANNUAL REPORT 2017**

**Contents**

Chairman's Report	1
Director's Report	5
Organizational Structure	10
Major Achievements	11
Activities of Research Departments	13
Board of Management, Committees and the Staff	29
Financial Statements	47
Auditor General's Report	102

## **Chairman's Report**

### **Rubber Research Board of Sri Lanka**

---

Whilst presenting the Annual Report of the Rubber Research Institute of Sri Lanka (RRISL) for 2017, I am pleased to place a record that there was a considerable success in achieving the stipulated targets during 2016. On the other hand, the year 2017 can be regarded as a historical landmark for RRISL in the international arena of the rubber industry, where RRISL has received a substantial recognition. It was a momentous occasion for us to host the first fellowship programme of IRRDB Academy in the premises of Dartonfield, the Head Office of RRISL, in October 2017, housed by researchers of 18 member countries of IRRDB. This was a unique opportunity received by us, as an appreciation of the initiative taken in the establishment of this professional academy, which was proposed to the Committee of Chairmen's and Directors' of IRRDB by me as the Chairman, Rubber Research Board and also giving emphasis to RRISL for being the first Rubber Research Institute of the world, established in 1909 with more than a century of existence.

There has been continuous progress in research activities in both Technology and Biology sections of RRISL and the related detailed information is available in the following paragraphs of this report. It is expected to place a short account on future challenges here and I express my deep gratitude to the Rubber Research Board (RRB) for properly guiding us on research, administration and financial issues by assembling in 9 occasions during 2017.

#### **Administration**

It was possible during the year to fill 42 vacancies which were vacant for several years, by adopting properly, the Scheme of Recruitment through a transparent procedure. During the year under review several posts in Research and Administrative cadre including the Deputy Director (Administration), a Senior Research Officer, 06 Rubber Extension Officers, the Librarian and Publications Officer, 30 Technical Officers, a Receptionist *cum* Telephone Operator a Field Officer and a driver were recruited to RRISL.

In addition, two Senior Research Officers of RRISL were promoted to the status of Principal Research Officers during 2017.

It is worth to mention here that the vacancy of Administrative Officer of the Ratmalana Office and Laboratory Complex of RRISL, which was vacant for several years has been filled internally, through a competitive examination and following the proper procedures.

### **Local and Foreign Training Programmes**

I am happy to mention that during 2017, we were able to further strengthen the initiative taken in 2016 on positive attitudinal developments among the Officers, in scientific departments and in other divisions by providing local and foreign trainings on related subjects.

Based on the availability of such programmes, 24 staff members were sent for training programmes, conferences and workshops in overseas countries; viz. India, China, Malaysia, United Kingdom, Australia, Thailand and Singapore.

It is expected to enhance the knowledge through these trainings/conferences and/workshops in their respective disciplines, whilst using the experiences on the recent trends in the rubber industry for the development and betterment of the same.

### **Procurement activities**

Procurement activities, in general have been in order due to employment of correct procurement procedures. There has been a progress of more than 90% in achieving the targets of procurement activities this year.

Nevertheless, some drawbacks in procurement of high tech instruments have been observed, as such an instrument recommended by a technical evaluation committee (TEC) yet to be installed for its expected use in the absence of required laboratory environments. This issue challenges the experience and professional knowledge of the members of the technical evaluation committees. This necessitates proper and specific methodologies to be adopted in future, especially in procurement of instruments of this nature.

### **Facing future challenges in the rubber industry and outlook in rubber technology**

#### ***Productivity of rubber plantation***

In general, the potential yields of the rubber clones identified through breeding programmes have recorded values above 1,500 kg/ha/year. Some clones have even

reached the productivity level of 2500-3000 kg/ha/year. Although some rubber land owners have shown satisfactory productivity levels, still the average productivity of rubber plantations is below the 1000 kg/ha/year yield level. The low productivity levels are more prominent in rubber plantations of regional plantation companies. The issue of low productivity is a great challenge ahead of us, which should be addressed immediately not only due to low productivity of rubber lands but also due to non-attractive prices at present. The combined effect of the above-mentioned issues would certainly create a situation where rubber growers tend to evade from the rubber industry in future.

#### **Natural Rubber attains a revolutionary status as a speciality raw material**

Some countries entered into the rubber sector research many years after our existence have developed tremendous capabilities and are equipped with cutting edge technologies in the rubber sector. Although, we have a history of more than a century of years in the rubber sector research, the setback in terms of research contribution in the past and present is lamentable in rubber industry technology towards acquiring knowledge and facing various challenges in the world employing Natural Rubber.

#### **Natural Rubber as a valuable raw material**

NR has high fracture strength and assures high durability and lifetime, too. Further, NR is an outstanding combination of mechanical and electrical properties which are responsible for high specific energy and power. The discovery of natural rubber as an electro-mechanical generator would eventually be the beginning of another scientific revolution, for sure.

On the other hand, use of NR as a basic raw material in Ceramic-NR composites, which is a piezoelectric material, would probably create a greater demand for NR in future. The recent escalating trend in consumption of Natural Rubber is further supported by the revolutionary innovations, especially in medical equipment.

Now, it is the high time to focus on developing our knowledge base to match with these novel technological break-throughs in this dynamic world. If we succeed, natural rubber as a raw material would definitely support to revive the economic growth of our country.

In order to achieve these goals, a dynamic transformation is expected in the technology sections of RRISL. In this respect an orderly action plan, emphasizing

research on electronic/electrical and mechanical aspects particularly with new young recruitments in these disciplines are required and the research officers need to be encouraged to focus their research on these aspects employing sophisticated high-tech instruments in front-line laboratories.

### **Other challenges**

The tendency of leaving RRISL, especially the senior officers after obtaining their postgraduate degrees is a great concern for the management of RRISL. The conducive environments in the state Universities and various private organizations such as; high salaries, various types of allowances and other privileges available with those institutions are the major reasons behind this internal brain drain.

Under these circumstances, during the last two years, six Senior Research Officers with more than a decade of experience holding PhD degrees in the disciplines of Biology and Technology have left the Institute creating a vacuum especially in the cadre of Senior Research Officer, leaving a great challenge ahead of the management of RRISL in filling of these vacancies.

I greatly appreciate the support extended to me by the Rubber Research Board. My profound gratitude is also extended for the guidance throughout the year by the Honourable Minister of the Ministry of Plantation Industries, the Secretary and the rest of the officials of MPI, which enabled us to diligently proceed with the research and development activities of the rubber sector.

I am also grateful to the personnel who are holding research, administration and financial responsibilities of RRISL, for their unreserved support throughout the year 2017.



N V T A Weragoda  
Chairman  
Rubber Research Board



## **Director's Report**

### **Rubber Research Institute of Sri Lanka**

---

This review consists of the Research and Development activities conducted by the six Agronomy departments, three units at Head Office, Dartonfield, Agalawatta and the four Technology departments at Ratmalana. This is also consisted with the progress review of Library and Publication Unit, Audio Visual and Information Technology Unit and the two estates, Dartonfield Group and Kuruwita, Polgahawela and Moneragala Substations.

Research and Development activities of each Department/Unit of RRISL are given under the title of “Activities of Research Departments-2017”

#### **Rubber industry of Sri Lanka**

##### ***Rubber production***

The natural rubber production of the country in the year 2017 has increased to 83,072 tonnes which was approximately 5% improvement against the year 2016. Slight increase in Natural Rubber price in the market would have been attributed to this. After gradual decline of rubber prices since year 2012 to 2016, Local and international rubber price recovery was observed only during the year 2017 and has resulted in increase of tapping days and hence, the increase in rubber production marginally. It has also been seen that this gradual price decrease have resulted since 2012, approximately a 50% decrease in total NR production by 2016. This was mainly due to the COP of the Production was found to be higher than that of the selling price in most occasions and hence, most small holder farmers abandoned tapping from their own rubber fields.

In addition, among the plantation companies, diversification of rubber lands into oil palm cultivation seems to have increased further during the year under review, from 9,413ha to a higher extent as per the latest statistics reported at the end of 2016. This has seriously affected the rubber production and if the trend continues further, the rubber plantation industry will face serious drawbacks in the supply side which may finally result in drastic effect and dramatic turn over of the flourishing rubber products manufacturing industry in the country.

Two largest contributors to the total rubber production in the country, RSS rubber increased from 39,754 tonnes to 41,523 tonnes, an increase of 4.4% and Crepe rubber

has decreased from 14,984 tonnes to 11,468 tonnes which accounted for a decrease of a 23%, respectively. Concentrated latex production in the country was estimated to be 28,877 tonnes in the year 2017. Average price of RSS1 was around Rs.239.42 per kg at the end of 2016 increased to Rs.336.21 per kg at the end of 2017, which is a 40% increase. Similar trend was observed for the Latex Crepe 1X price which was increased by 34% from Rs.269.09 in 2016 to Rs.350.25 in 2017.

#### ***Rubber extent***

Total rubber extent in the country in the end of 2017 was around 136.8 thousand hectares while the extent under tapping was around 101.8 thousand hectares. The increase in rubber extent was due to the extent of new planting which accounted for 1500 ha.

#### ***NR consumption exports and imports***

NR consumption in the country in 2017 reduced to 129,000 tonnes from 142,000 tonnes in 2016. Sri Lanka has exported around 17,230 tonnes of natural raw rubber in the year 2017 against the year 2016 which was 16,166 tonnes of exports.

#### ***Rubber manufacturing sector***

Earnings through raw rubber exports was Rs.5,920 million in year 2017 against the Rs.4,758 million in year 2016. Export earnings from finished products was recorded as Rs. billion 127 in 2017, an increase of about 14% against the previous year. Exports earnings from semi processed rubber has reported as Rs.642 million in the year 2017, while it was Rs.766 million in the year 2016.

#### ***Global rubber industry review***

##### ***Natural rubber supply***

Total world NR production increased to 13,287 thousand tonnes in 2017 against the year 2016 which was around 12,429 thousand tonnes. World NR production has increased by 6.9% according to ANRPC statistics. The provisional data received from the member countries of ANRPC indicated an increase of 5% year-on-year. This is mainly due to the favorable markets in the major markets in Asia Pacific region during the end of the year. NR production more likely to rise by 1.9% in Thailand, 5.3% in Vietnam, 14.4% in India, 33% in Cambodia, 8.5% in Malaysia and 8.1% in Indonesia, as per the provisional estimates received by ANRPC.

Table 1 gives the annual average yield and mature area in the ANRPC group in years 2017 and 2016. While the average yield has declined in Thailand, China, Cambodia and Sri Lanka, it has been shown slight increase in Malaysia, India, Indonesia, Philippine and Vietnam during 2017. The expansion in mature area reflects the large scale planting undertaken during the period from year 2005 to 2012. Average annual yield figures reflect the achievements made by producing countries in clone improvements crop management and adoption of harvesting technologies have translated into improvement in average yield in most of the ANRPC countries. By contrast, further improvements are necessary in few countries like Sri Lanka, Thailand and Cambodia. Improvement in rubber prices especially during the year 2017 has aggravated the yield performance further.

**Table 1.** *The annual average yield per hectare in ANRPC member countries and extents under tapping*

Country	Total area ('000 ha)		Tapped area ('000ha)		Yield (kg/ha/year)	
	2016	2017	2016	2017	2016	2017
Cambodia	433	436	127	170	1,143	1,136
China	1,161	1,160	720	744	1,075	1,118
India	818.8	829	445	477	1,402	1,467
Indonesia	3,639	3,659	3,042	3,054	1,104	1,188
Malaysia	1,073	1,078	481	493	1,400	1,420
Philippines	223	244	143	153	694	700
Sri Lanka	136	137	96	102	819	835
Thailand	3,734	-	3,118	3,251	1,394	1,363
Vietnam	973	972	622	653	1,659	1,665

#### **Global rubber supply and demand:**

Total rubber demand including Synthetic and Natural rubber was estimated as 29,300 thousand tonnes in 2017 compared to 27,459 thousand tones in the previous year. This increase accounted for an increase of 3% growth during the respective period. Statistics revealed that NR demand increased about 3.2% while Synthetic rubber demand approximately increased by 3.5%. Total NR production was 13,200 thousand tonnes at the end of year 2017 which was 12,451 thousand tonnes in year 2016. This increase includes approximately 6% increase of NR production.

#### **Natural rubber demand:**

Apart from economy's dominant role, the demand for NR is greatly influenced by geographical shifting of manufacturing base, capacity expansion in auto tyre industry,

substitution between natural and synthetic rubber and change in consumption basket. Table 2 shows the trends in NR consumption and their growth in ANRPC member countries and total consumption in other countries in the world.

**Table 2.** *Trends in NR demand by major consumers*

	Consumption ('000 tonnes)		Growth (%)
	2016	2017	2017
ANRPC	8,150	8,249	1.2
EU – 28	1,188	1,236	4
USA	932	950	2
Japan	677	682	0.7
Brazil	428	434	1.5
Turkey	157	167	6.4
Canada	119	124	4.5
Russia	106	116	9.8
Mexico	101	102	1.1
Rep of Korea	381	415	8.8
Taiwan	101	110	8.5
Others	387	383	-1
<b>World Total</b>	<b>12,726</b>	<b>12,968</b>	<b>1.9</b>

Based on the statistics released by the ANRPC, China consumed 38% (5,386 kmMn) of the total consumption of natural rubber globally during 2017. Other major consuming countries or regions are the European Union (9%), India (8%), the US (7%), Japan (5.2%), Indonesia (4.8%), Thailand (5.3%) and Malaysia (3.9%). The growth rate of demand for NR has increased in all major consumers including Russia (9.8%), Rep of Korea (8.8%), Taiwan (8.5%), Turkey (6.4%), EU-28 (4%) and USA (2%).

#### **NR demand and supply gap**

Global NR demand experienced a growth of 2.0% in 2017 while the supply has headed for a 6% increase. The resultant demand supply position for 2017 is shown in Table 3 in comparison with the previous two years. Global NR stocks at the end of year 2017 was 231 thousand tonnes. Consumption of natural rubber in ANRPC member countries, which account for 65% of the global demand, grew at 1.2% growth during 2017 against the previous year, according to the latest statistics.

**Table 3. Outlook for the demand supply gap**

	Quantity ('000 tonnes)			Growth (%)*	
	2015	2016	2017	2016	2017
Production	12,271	12,451	13,199	1	6
Consumption	12,140	12,726	12,968	5	2
Gap	131	-275	231		

(ANRPC, 2018)

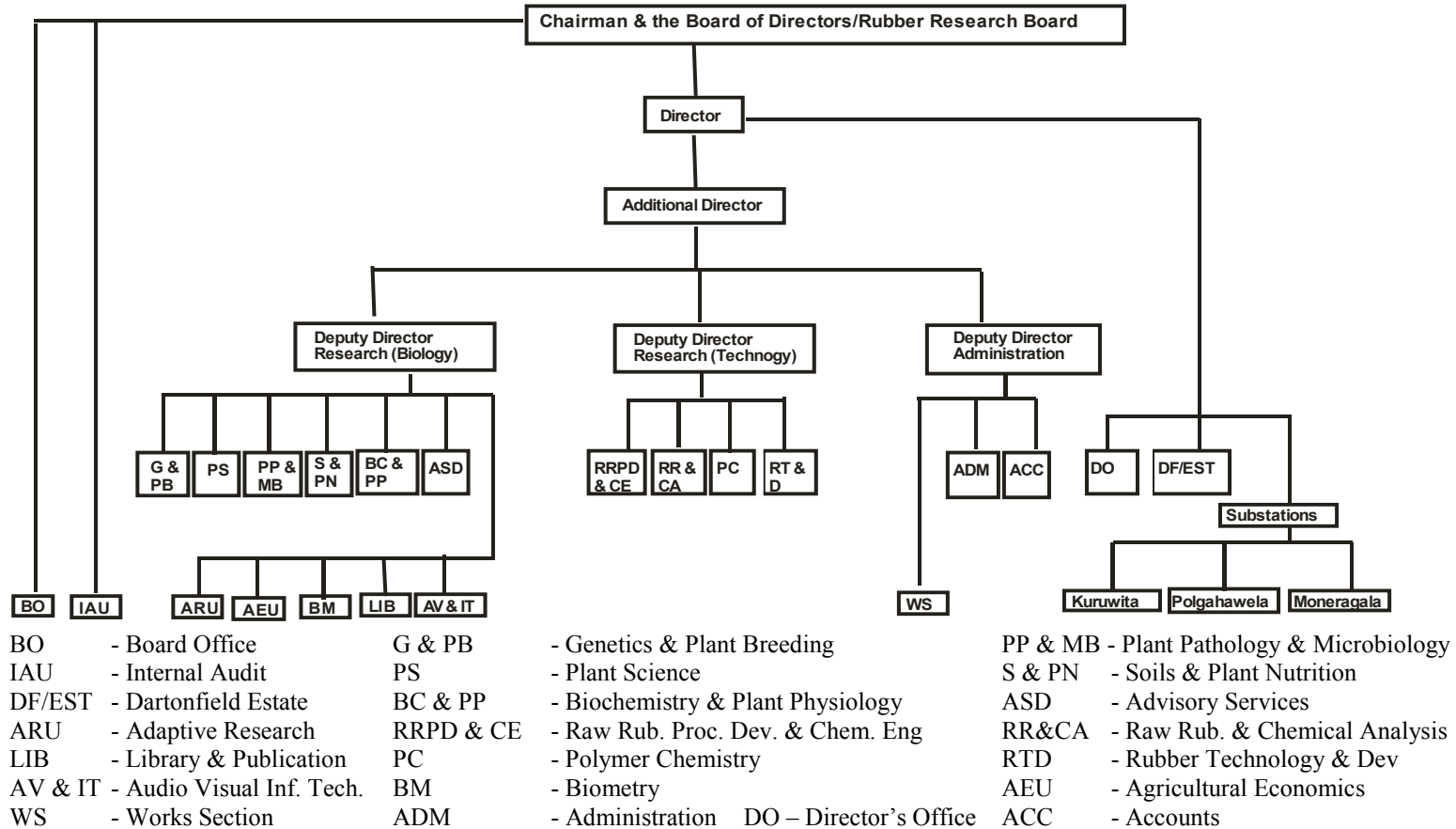
### **World NR price movement**

Despite of the declining trend prevailed in most of the market starting from the year 2011 to 2016, prices shown an increase in the year 2017. Sri Lankan annual average RSS3 price was US\$ 1.54 a kg in year 2016 increased to 2.20 a kg. The average price of RSS3 recorded as US\$ 2.03 in Bangkok in year 2017 against the previous year average value which was US\$ 1.62. Average Indian RSS4 has increased to US\$2.09 from US\$ 1.82 per kg against the previous year. According to the ANRPC countries, global natural rubber prices are likely to stay firm due to stronger crude oil prices, consumption growth and increase Chinese demand and appreciation of US dollar *etc.*



W M G Seneviratne  
Director  
Rubber Research Institute

## ORGANIZATIONAL STRUCTURE



## Major Achievements during 2017

---

- Fertilizer encapsulated coir bricks was developed for maximize fertilizer use efficiency, with minimum wastage in rubber plantations (Fig. 1).



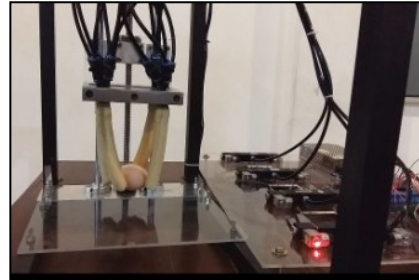
**Fig. 1.** Application of coir bricks for immature rubber plants

- Prepared three soil maps relevant to rubber growing areas in Matara, Galle and Kegalle districts and identified fifteen different soil series.
- A non – toxic NR latex based adhesive for paper was developed and commercialized.



- A non – toxic NR latex based paint was developed for rubber toys.
- A synthetic rubber based compound for the sliding shoe of crawlers was developed at the request of the Road Development Authority.
- Natural Rubber latex foam suitable to manufacture ear plugs was produced at the request of an industrialist.

- Natural Rubber latex compounds suitable to produce parts for robot arms were developed for the research activities of University of Moratuwa.



- An epidemic of Cockchafer grub infestation was reported during the year from Elpitiya, Horana, Padukka and Avissawella areas and insecticide, imidocloprid was identified as a substitute for chlorpyrifos.
- New antagonistic fungi to use as biological control agents (specie to be identified) against white root disease fungus were identified from rubber growing soils.
- A novel method was developed to synthesize *in situ* filler incorporated natural rubber latex.
- In new clone development, six outstanding selections were taken directly to large scale evaluation by skipping the small scale level evaluation. It reduced the evaluation period around twelve years.
- New hybrid solar – biomass dryers for rubber sheet manufacturing was designed.
- New chemicals were recommended for the control of white root disease.
- Model rubber holdings, villages and processing centres were established.
- A new test method was developed to estimate dry rubber content of latex at the field as a replacement for metrolac.



## Activities of Research Departments - 2017

---

### Agronomy departments/Sections/Units

#### GENETICS AND PLANT BREEDING DEPARTMENT

To enrich the *Hevea* breeding pool, eighty eight new genotypes were produced in hand pollination programme carried out at Neuchattle estate. Four outstanding genotypes from 2011 hand pollinated progeny were selected for planting in 2018. Around 1800 non-Wickham accessions were multiplied and 460 accessions were planted at Polgahawella Substation. Comprehensive data collection in Eladuwa 2009 ECT trial was continued with an objective of developing yield indexes for commercial scale clonal evaluation. The cyclone “Ockhi” affected number of trials in Eladuwa, Pallegoda and Paiyagala Estates.

Analysis of antioxidant gene expression in tapping panel dryness (TPD) affected rubber tree, showed that TPD affected laticifer tissues might run short of antioxidants mainly *HbSOD* antioxidant enzyme making the clone more likely to get TPD. A fragment of Rubber Elongation Factor promoter and gene was sequenced in eight genotypes and showed difference in nucleotides level. Simple and rapid method for RNA extraction from different plant tissues was developed and optimized.

#### PLANT SCIENCE DEPARTMENT

Seed production was found low in 2017 as compared to that in 2015 & 2016 irrespective of clones and areas. A number of novel and cost effective sowing media as an alternative to river sand was evaluated and promising results were obtained from coir pith and elephant dung under nursery conditions. Priming of rubber seeds with sodium nitroprusside improved germination, storage life and seedling performance. A new experiment on “effect of polybag size and type on growth of rubber” showed promising results with reduced bag size and polythene material. According to an experiment commenced at Middeniya and Egaloya rubber nurseries, use of banana sheath as a wrapping material in budgrafting showed a greater success rate. Seedlings derived from illegitimate seeds of seven clones showed no significant differences in growth. Growth and physiological data obtained from bud wood nurseries established in Wet Zone (Egaloya), Dry Zone (Ampara) and Intermediate Zone (Moneragala) showed differences in clonal performance under varying climates.

Pretreatment with sodium nitroprusside and Moringa (“Murunga”/drumstick) leaf extract enhanced physiological and growth attributes of rubber plants under sub optimal conditions in the Intermediate Zone. Two large scale sprinkler and drip irrigation systems were designed for rubber nurseries and fields at Padiyathalawa. A drip irrigation system was installed for 1000 nursery plants at Moneragala Sub Station and growth parameters were recorded. Exogenous application of salicylic acid showed promising results in dry matter increment in budded plants at Padiyathalawa. Growth and physiological data obtained from plants at Vishwamadu in Kilinochchi showed significant differences for clones. Rubber x Agarwood intercropping experiment revealed that the growth of local agarwood/“wallapatta” plant is low as compared to other two species. A Drumstick plant (“Murunga”) nursery was established in Moneragala for Murunga x Rubber intercropping trials to be established in 2018. A sense on Guava was obtained for Rubber x Guava intercropping experiment. Arrangements were made to commence a new intercropping experiment with Rubber x Fruit crops at Kumarawatta estate, Moneragala in collaboration with Fruit Research & Development Institute, Horana. Growth data was recorded for density trials at Kandakadu, Galewatta and N’ Kelle.

New experiments on low intensity tapping were commenced at Sirikandura and Padukka estates. A new experiment was commenced at Padukka estate to assess the effect of different chemicals and botanicals on minimizing the incidence of tapping panel dryness. Another experiment was commenced to evaluate the effect of winter rest on growth and yield of rubber plants. Four (4) new fields were established with 450 plants from different clones and employing different spacing systems in Kilinochchi. A new experiment was commenced to reduce TPD incidence by using Moringa leaf extract. About 1200 number of plants was established at Kandakadu Army camp, Polonnaruwa for density experiment. Issuing authentic budwood to establish budwood nurseries, issuing marking plates and testing polythene were attended/ done by the department staff. About 400 farmers were trained for harvesting and use of new tapping knife. 15 advisory visits, 11 training programmes, 42 nursery inspection programmes and 375 experimental visits were attended by the officers of Plant Science Department. All nurseries were inspected for quality assurance, 624, 100 plants were certified and reports were submitted.

#### **PLANT PATHOLOGY AND MICROBIOLOGY DEPARTMENT**

Incidence of the secondary leaf fall diseases, (Powdery mildew and Colletotrichum leaf disease) was mild during the refoliation period except for a few disease

vulnerable sites. Based on the *Corynespora* screening programme, there were no new disease reports from the field plants. Incidence of *Phytophthora* disease was also mild during the year 2017. Experiments were in progress to test the effectiveness of tree injection against white root disease management. The antagonistic plants effective against *Rigidoporus* *in vitro* conditions were tested in the field. Studies on biology of the pathogen of Brown root disease was continued. The severity of *Corynespora* in the clone RRISL 201 at Salawa Estate was comparatively severe. Imidoclopid was introduced to control cockchafer grub infestations in rubber plantations. Antagonistic fungi were identified from rubber growing soils for biological control of the white root disease. A compost based medium is used to prepare a biopesticide. The product was effective under field conditions for white root disease and ready to be commercialized. Beneficial microbiological studies were initiated. Fungi and bacteria from different environments were isolated to use their activity for bioremediation. A culture collection consisting with beneficial fungi and bacteria were being raised at the Plant Pathology and Microbiology Department to be used for commercial purposes. Identification of pest and disease problems related to the non-traditional areas of the country was initiated with the funds received the Ministry of Plantation Industries. Sites were selected to establish clonal screening trials in nontraditional rubber growing areas viz. Padiyathalawa, Kandakaduwa Army Camp, Vavuniya and Monaragala. Clonal screening nurseries consisting of fifty recommended and potential rubber clones were established in Monaragala, Padiyathalawa and Kalutara.

#### **SOILS AND PLANT NUTRITION DEPARTMENT**

Research activities with respect to improvement of soil fertility, increasing fertilizer use efficiency, soil, water and nutrient conservation, weed control were conducted. A special capital project “Modification of fertilizer recommendation systems of *Hevea* with reference to plant, soil and field parameters” was funded by Ministry of Plantation Industries. Continuous application of biofilm biofertilizer (BFBF) with recommended quantity of chemical fertilizers showed higher performance in growth parameters of immature rubber plants over the chemical fertilizer only treatment. Moreover, no significant differences of growth parameters and acceptable levels of major nutrients N, P, K and Mg could be observed with the reduction of the quantity of recommended chemical fertilizers with BFBF when compared to recommended chemical fertilizer only treatment. Combine use of agro management practices such as cover cropping, green manuring and biofertilization showed significant enhancement of soil fertility parameters such as organic carbon, total N, ammonium, available P, exchangeable K and Mg, microbial biomass carbon and growth

parameters of immature *Hevea* plants. Control of weed growth and extended the regeneration time of weed growth in immature *Hevea* fields could be observed by the alternative weed management practices such as straw and oil palm refuse mulching. Application of environmental friendly alternatives for inorganic fertilizers; commercially available compost, vermi compost, vermi wash, partially burn paddy husk reported beneficial effects on nursery plant performances. Single application of commercially available slow release fertilizer at bag filling stage showed better growth parameters than conventional biweekly fertilizer applications. This would benefit the growers due to the total cut down of labour cost associated with regular fertilizer applications. Prepared three soil maps relevant to rubber growing areas in Galle, Matara and Kegalle districts and identified fifteen different soil series.

Site specific fertilizer recommendation programme provided 43 fertilizer recommendation reports for 6,500 ha of mature rubber. Six land suitability reports were issued for 81 ha under land selection programme. Analytical reports were sent for approximately 1,050 samples (4,000 parameters) including 400 fertilizer samples to outside organizations assuring the application of good quality fertilizers to rubber lands.

#### **BIOCHEMISTRY AND PHYSIOLOGY DEPARTMENT**

Recently recommended S/2 d4 low frequency harvesting system was introduced to five smallholdings and S/4 d3 low frequency harvesting system to one smallholder. Investigations on S/2 d4, S/2 d12d/7 and S/4 d3 systems in the Wet Zone was continued in plantations of Kuruwita Substation of RRISL. Monitoring of fields under S/2 d4 system at Galewatta and Nivithigalakele divisions of Dartonfield estate continued during the year. Performance of S/2 d4 and S/4 d3 harvesting systems in the Intermediate Zone was assessed at RRISL Substation, Polgahawela. Investigations on new d4 based double cut harvesting system began in view of addressing the issue of low yields during harvesting on renewed bark.

In order to identify best genotypes for different agro-ecologies, fields established with 04 clones in Dartonfield, Pasyala, Kandakadu and Vauniya were monitored during the year. However one field established in Nedunkulama, Vauniya had to be discontinued as the farmer ceased. Physiological, biochemical and growth data collection was done at newly established experimental fields in Namalgama, Kandakadu, Hambegamuwas and Padiyathalawa with 10 clones. Planting was completed in a new field selected from Moneragala district for the same project.

Assessment on the variation of biochemical components and physical properties of rubber wood of RRIC 121 with respect to different maturity stages was continued.

Analysis of latex samples for biochemical components to identify their effectiveness on quality of raw rubber was continued with five rubber clones in Eladuwa and Dorset estates in view of developing a system to screen suitable clones producing high quality raw rubber at the early stages of the breeding and selection programme. Investigations on biochemical components of latex and latex physiology of 10 HP progenies established at Eladuwa and Yatadola estates were done on the request of Genetics & Plant Breeding Department.

Financial support was received from National Science Foundation for the project on the development of ethephon stimulant locally to cater the needs of rubber growers in Sri Lanka. Initial formulations began.

Seventeen awareness programmes were conducted to introduce low intensity harvesting systems and temperature corrected ready-reckoner chart for Rubber Development Officers and Rubber smallholders in Kalutara and Ratnapura districts.

#### **ADVISORY SERVICES DEPARTMENT**

As a solution to tapper shortage, 236 new Harvesting Assistants were introduced through Tapping Training Schools (TTS) and 673 Semi-skilled Harvesting Assistants were trained to improve the technical quality in tapping. The extension strategy focused on farmer participatory development of selected rubber units in each REO divisions in traditional rubber growing areas was continued and developed 152 rubber lands as model rubber holdings. Status of 75 immature substandard rubber holdings and 77 mature substandard rubber holdings were improved successfully. Thirty seven rubber processing centers were developed as models and construction of 47 new RSS Processing Centres and rehabilitation of 20 substandard centres were attend. Farmer training programmes were conducted to educate 1768 rubber growers on general cultivation and processing aspects of rubber. Also, five selected youth were trained on value addition of rubber.

Basic data and information were collected to develop selected villages as model rubber villages and action plans were prepared. Three technology transfer centres were established at Kegalle, Ratnapura and Kalutara areas for effective technology transfer to rubber growers. Group extension programme called “Vihidum Sathkara”

was effectively conducted providing advisory and extension services for 580 small land units and in traditional rubber growing areas for necessary improvements. Six hundred forty seven advisory visits were carried out to solve problems in technology adoption on requests made by smallholders.

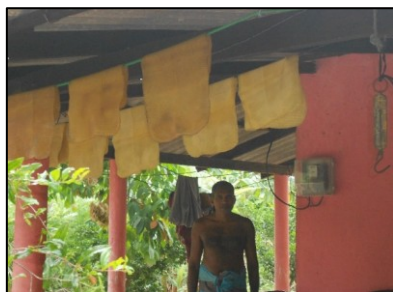
### **BIOMETRY SECTION**

Development and modifications of statistical methods to suit with the needs of the rubber sector were mainly focused. Research support on statistical analyses, *i.e.* designing, analyzing and interpretation of the research findings, were given to other research departments. Several drought indices; namely, deciles, Standardized Precipitation Index (SPI) and Standard Precipitation and Evapotranspiration Index (SPEI) were used in identification and characterization of droughts in nearly 30 stations in Sri Lanka under the project titled “Indicator based identification and forecasting of droughts in Sri Lanka” which is funded by the National Research Council (NRC) under the project climate change and variability. The temporal variations and trends of rainfall anomalies were also studied for different rainfall seasons of the year.

AGROMET station at Dartonfield and Meteorological stations at Kuruwita and Moneragala were maintained and data were recorded and disseminated for research purposes. Rainfall data were collected and recorded from Nivithigalakele, Galewatta and Polgahawela substations in addition to the stations mentioned above.

### **ADAPTIVE RESEARCH UNIT**

The study conducted among the rural community of Eastern province revealed that rubber cultivation has significantly either augmented or in the process of augmenting the human, physical, financial and social livelihood capital assets in farmer households justifying the efforts and investments made to expand the rubber cultivation in the area in terms of enhancing the rural livelihood.



Enabling farmers to get electricity



Empowering farmers to buy vehicles on lease

According to the survey conducted in Northern Province, ethnicity of farmers, membership in social organizations, availability of water source and usage of mulch as a soil conservation practice at early stage of growth were the significant sociocultural and agronomic factors affecting the success of rubber cultivation in the region. In view of attracting local community to rubber cultivation, four participatory adaptive research plots were established in Malayalapuram, Kilinochchi.

Financial analyses on lifespan of rubber cultivation indicated that at present market price and existing trend in tree density decline, life cycle of about 20 years could be adopted for high level of profitability (Fig. 1).

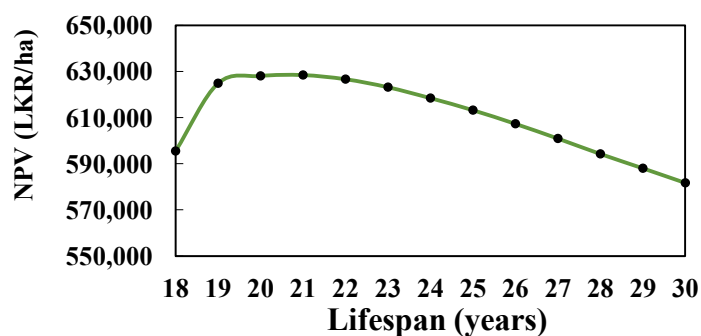


Fig. 1. Variation Net Present Value (NPV) at different lifespans

#### AGRICULTURAL ECONOMICS UNIT

A study on Socio-economic implications of rubber-based farming systems of the smallholder sector in Moneragala district was completed. Multivariate statistical techniques were used for a wide variety of situations associated with farm typology delineation. It was characterized by different levels of socioeconomic conditions while each category is discriminated at different levels. Primary level education, experience from farming, income from rubber based farming systems and access to credit were dominant factors in the most representative farming clusters in Moneragala district. One of the advantages of this socioeconomic based livelihood approach is that it allows a bridging of divides, enabling different people to work together, particularly across the natural and social sciences. Thereby, this approach ensures an applied, holistic, and cross-disciplinary approach to priority setting and targeting. A similar study in Kalutara district continued.

Analysis was conducted to find out suitable interpolation method in NR yield mapping in Kalutara district in collaboration with Biometry Section. An analysis was made on mapping the productivity and their driven forces in the smallholder sector in

Kalutara district. This study was conducted to analyze the average yield variation in smallholder rubber lands in the Kalutara district in the Wet Zone of Sri Lanka. Special emphasis was made to compare different statistical interpolation techniques available in ArcGIS geostatistical analyst in developing spatial maps.

Economic analysis of use of rainguards, Shift share analysis of raw rubber international trade and cost benefit analysis of rubber based farming systems were also attended.

#### **LIBRARY AND PUBLICATION UNIT**

The reference section of the Library was updated with thirty nine text books making the total collection to 6089.

Several institutional publications, namely Journal of the RRISL Vol. 95 (2015), IRRDB Programme Book and Annual Report - 2015 were made.

In the CRT 2017 Exhibition, 84 copies of Advisory Circular Folder and 214 copies of DVDs were issued for the general public.

#### **AUDIO VISUAL AND INFORMATION TECHNOLOGY UNIT**

The outdoor network among all the departments at Dartonfield office premises was setup using fiber optic cable. The indoor network of each department at Dartonfield and Ratmalana Office premises was upgraded using UTP CAT 6 cable and surge protection system was installed at the network termination points.

Maintaining and troubleshooting of indoor/outdoor network, computers and other hardware peripherals, audio visual equipment, PABX system and managing the finger scanners (including the database) were done throughout the year. Firewall appliance was also installed for monitoring the internet access of Dartonfield office premises.

The necessary steps were taken to continue the process of redesigning the official web site ([www.rrisl.lk](http://www.rrisl.lk)) and existing web site was updated under the instruction of Management.

Existing internet connection was upgraded up to 10M Smart Link through the internet service provider and discussions were continued with regard to get fiber optic internet connection for Dartonfield and Ratmalana office premises from Sri Lanka Telecom as permanent solution for internet problem and taken the necessary steps to get the feasibility test done by SLT.



Approval was obtained for setting up telecommunication tower at Dartonfield premises from Dialog Axiata PLC with regard to improve 3G Signal Coverage.

## **Rubber Technology departments**

### **RUBBER TECHNOLOGY AND DEVELOPMENT DEPARTMENT**

Pandanas (watakeiya) fibres were processed and surface treated with KOH, silane coupling agent and ethanol for middle layer of solid tyre. NR based composites were prepared with these modified fibres and cure and physico-mechanical properties were evaluated and compared with those containing unmodified fibres.

Properties of blends of virgin NBR and reclaimed NBR glove waste (produced according to different mechano-chemical processes) were evaluated. Work was conducted to develop a low cost oil resistant mat using the reclaimed rubber prepared according to the selected process.

Properties of dry rubber/bitumen masterbatches prepared with RSS, TSR and ground rubber tyre (GRT) were tested at the Road Development Authority (RDA). Further, reclaimed rubber was prepared with GRT according to three different processes and blended with bitumen to prepare masterbatches. Property evaluation was in progress at RDA.

A non-toxic NR latex based adhesive and paint were developed. Synthetic rubber based compound with excellent heat, abrasion and oil resistance was developed at the request of the Road Development Authority for the sliding shoe of crawlers. Developed a dry rubber as well as latex based compound for the inner lining of tanks used for storage of sodium hydroxide. Crepe rubber based toy item was developed at the request of an industrialist. NR latex foam suitable to manufacture ear plugs was produced at the request of an industrialist. Three latex based developments were made in collaboration with undergraduates attached to the Mechanical Engineering Dept., University of Moratuwa.

Forty SMEs and ten groups of students were trained on manufacture of NR latex based products. Conducted four training programs on “Manufacture of rubber based products” for rubber smallholders/SMEs in collaboration with the Advisory Services Dept., Vidatha Centre and the Thurusaviya Trust Fund. Further, the staff was actively involved in arranging the stalls at the National Exhibition organized by the President

Office and CRT Trade Fair 2017. Participated in the “Sara Prabha Gira” radio programme organized by the MPI in collaboration with SLBC.

Tested 150 sole crepe samples, 161 rubber compounds and 92 rubber products at the request of the industry.



Modification of pandanas (watakeiya) fibres to produce NR based composites



Reclaiming of tyre waste (GRT) to produce rubber-bitumen masterbatches for road construction

#### **POLYMER CHEMISTRY DEPARTMENT**

A process was developed to form filler particles and their incorporation into latex matrix. Latex films were prepared using the developed filler incorporated latex and green strength of the samples were evaluated. There was no deterioration of properties of the natural rubber films made out of *in-situ* filler incorporated latex and

further assessments were in progress. A series of preservative systems was developed using a commercially available nano-compound to enhance the preservative or anti-bacterial action on natural rubber latex without affecting the basic latex properties. The preliminary results have shown the possibility of reduction of TMTD content, which is considered a toxic material in conventional low ammonia TMTD/ZnO (LATZ) preservative system. A series of Ribbed Smoked Sheets was prepared using different ratios of natural rubber latex and skim latex. It was found out that skim latex could be blended with fresh NR latex upto 40% without affecting the raw rubber properties of RSS, curing and physico-mechanical properties of the dry rubber compounds developed. Several combinations of existing accelerators were used in preparation of latex compounds in an attempt to develop nitrosamine safe sulphur vulcanizing system for latex based product manufacture. Some combinations were identified as potential systems to offer improved nitrosamine safety of the latex compounds.

More than thousand samples of polymer materials received from industry and academia were characterized using Fourier Transform Infrared Spectroscopy (FTIR), Differential Scanning Calorimeters (DSC) and Dynamic Mechanical Analyzer (DMA). Solutions for industrial problems, brought along with the samples for analysis, were suggested and recommended on request based on the characterization results.

#### **RAW RUBBER AND CHEMICAL ANALYSIS DEPARTMENT**

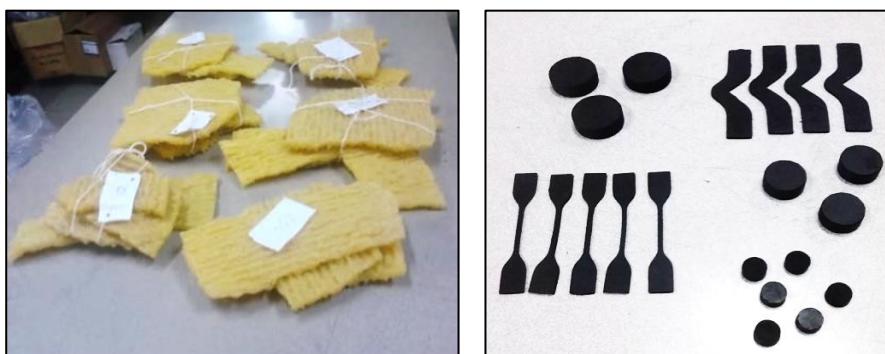
The department offered the testing, analytical and certification services on raw natural rubber and rubber chemicals to all sectors of the rubber industry. These services were also extended to rubber traders, researchers from fellow departments of the institute and various local institutions such as Universities, other research institutes as well as individuals including postgraduate students, consultants and inventors *etc.*

In total, three thousand thirty six samples of natural rubber latex, dry rubber and rubber processing chemicals were tested for their quality during the year. This included 2,009 dry rubber samples, 1,015 latex samples and 696 rubber processing chemicals. Also 386 test certificates were issued on requests received from the respective parties for their quality assessment and marketing purposes.

Study on Effects of ethephon stimulation on physic- mechanical properties of rubber and in-depth analysis on dynamic mechanical properties of RRIC 203 clone were completed.

Two new test methods were developed for the determination of free sulphur content in a sulphur sample and volume change in vulcanized rubber product.

The department staff provided 6 training programmes on raw rubber and natural rubber latex testing for laboratory personnel, industrialists, research students and university undergraduates.



**Fig. 2.** Preparation of samples for the study on dynamic mechanical properties of RRIC 203 clone



**Fig. 3.** Homogenization of rubber samples prior to analysis

#### **RAW RUBBER PROCESS DEVELOPMENT & CHEMICAL ENGINEERING**

Design and construction of user friendly simple and small scale latex coagulation tanks with 10kg capacity were completed. Construction work of a solar flat plate air collectors assisted greenhouse type dryer funded by Sri Lanka Climate Pvt Ltd. was completed at Bangalagoda Grameeya Rubber Sanwardhana Sansadaya, Badalkubura,

Moneragala. This unit was used for pre-drying of sheets. Preliminary trials have shown that smoke drying period of twenty four hours in a Single day Smoke drying unit (SS drying unit) could be further reduced by 50% when the sheets are pre-dried in the green house for two days.

A study carried out on curing characteristics and physico-mechanical properties of used tea waste (UTW) incorporated NR composites was completed. UTW was found to be suitable as a diluent in certain rubber product applications.

A study carried out on the feasibility of recycling of processing water in crepe rubber manufacturing industry revealed that a minimum of 30% savings in process water consumption could be achieved. Studies on two water use protocols continued. A hybrid technology to manufacture centrifuged latex with low protein contents was found to be effective in reducing the protein content without using the multi-cycle centrifugation process.

A research project was conducted to develop pre-vulcanized latex with improved stability for special purpose applications on a request made by a latex product manufacturing company. One retardant which could increase shelf-life of compounded latex and pre-vulcanized latex by three months and one month, respectively, was identified.

Dynamic Mechanical analysis of a series of rubber composites prepared using different types of raw rubbers was carried out to study their storage modules ( $E'$ ), loss modules ( $E''$ ) and damping factor ( $\tan \delta$ ). It was revealed that  $E'$  and  $E''$  of SLR -20 composites were significantly higher than that of other rubber composites studied in the glassy region. In the rubbery region, SLR-20, RSS and crepe rubber composites showed similar dynamic properties while skim crepe rubber composite recorded higher  $E''$  values and lower  $\tan \delta$  peak value showing the necessity of careful selection of skim crepe rubber for dynamic applications.

Two different techniques were developed to dispose the sludge deposited in the latex maturing tank and in the bowls of the latex centrifuging machines used in the latex centrifuging industry. Former was converted to a form of special rubber while latter was converted to form of value added filler. These two technologies have been made available to the industry providing technical solutions to the associated environmental problems.

The staff of the department continued to provide routine technical assistance/ advisory, analytical services and conducting training programs to stakeholders and academia.

### **Estates own by RRI and Sub stations**

#### **DARTONFIELD GROUP**

A total crop of 161,455 kg, has been harvested during the year providing 86.9% of the estimated crop. When comparing with the previous year, crop records a decrease of 8.3%. The crop harvested on wet days due to the rainguards was 27,069 kg which amount to 17% of total harvested crop.

Average yield per hectare (Y P H) for the year was 917 kg showing a decrease of 55kg from the previous year.

The average intake per tapper recorded during the year was 7.6 kg from a tapping task of 230 trees. Highest intake per tapper of 12.5 kg was recorded from the 2010 field in 1<sup>st</sup> year tapping with a tapping task of 316 trees of clone RRISL 203/2001 tapped on S/2 d4 tapping system with ethral.

The total number of normal, late, rainguard and no tapping days recorded during the year were 224, 02, 69 and 69 days, respectively.

Total rainfall recorded for the year was 4,068.1 mm with 188 wet days showing 58 mm more and 22 wet days less from the values recorded in the previous year.

The Cost of Production (COP) and Net Sale Average (NSA) recorded for the year was Rs.280.55 and Rs.319.00, respectively, giving a profit of Rs.38.45 per kg and a total profit of Rs.6.2 million. Profit per hectare recorded for the year was Rs.35,262.40. Quality level of grade 01 manufactured was 67% in crape and 91% ripped smoke sheet (RSS).

#### **KURUWITA SUB – STATION**

The mature and immature extents of the Kuruwita Sub Station were 77.66 and 4.50 hectares, respectively.

A total crop of 84,391 kg was harvested during the year recording and decrease of 20,260 kg from previous year's crop.

Average yield per hectare (YPH) was 1,086.67 kg. The average intake tapper (IPT) of the estate was 9.0 kg showing a difference of only 0.1 kg from the previous year value.

The total number of normal, rainguarded, rain interference and no tapping days recorded during the year were 203, 78, 40 and 44, respectively.

The annual rain fall recorded during the year was 4,768.4 mm with 246 wet days as against 3,342.8 mm with 222 wet days during the previous year.

The cost of production (C.O.P) and the net sale Average (N.S.A) for the year were Rs.250.01 and Rs.294.18 per kg, respectively. The profit made for the year was Rs.3.7 million and the profit per hectare recorded for the year was Rs.47,998.33.

#### **POLGAHAWELA SUB - STATION**

A total crop of 7,661kg, has been harvested providing 65% of the estimated crop for the year. This was 44% less from the value recorded in previous year.

Average yield per hectare (YPH) for the year was 652kg. In the months of February, March and April, tapping were not done due to severe drought condition prevailed. This resulted in a decrease of 518kg (44%) over the last year's value.

The average intake per tapper during the year was 9.4kg. The highest intake per tapper of 10.2kg was recorded from the 2005 clearing with a tapping task of 216 trees of clone RRIC 121 tapped on S/2d2, S/2d3 & S/2d4 systems.

The total number of normal, late, and no tapping days during the year were 226, 8 and 131, respectively.

Total rainfall recorded for the year was 1,974mm with 164 wet days. Out of the total manufactured RSS, the share of No.01 grade was 77%.

#### **MONERAGALA SUB - STATION**

The Moneragala Substation was established in 2006 to cater to the R&D needs of the expansion of rubber to the non-traditional areas, particularly Moneragala and Ampara Districts. It has 25 ha in extent and currently planted with budwood plants of various clones in nurseries, some demonstrations of intercropping rubber with sugarcane, banana, cinnamon, pomegranate and rambuttan. Some clonal and pathological trials cover about 10 ha. A young budding nursery is established annually to provide plants

for research work. The agro-well continues to provide adequate water for the substation inclusive of crop irrigation needs. The building consists of an Auditorium, Office and the rooms for overnight stay for the Officers who visit the Substation. Various training programmes are conducted here by the RRI.

About 200 Smallholder farmers were trained on tapping and other aspects. Uwa Wellassa University students and trainees from other institutes were given practical training.

A trial to see the effect of night tapping was conducted throughout the year at two different locations and the data collection was done by the field staff of the substation. 5000 Grilicidia plants established as per the request of the Presidential Secretariat were maintained. Stencils to mark tapping panels and rubber tapping knives were issued to stakeholders. However, absence of residential staff is a shortcoming. At least one Experimental Officer should be appointed to carry out the experiments which will lower the need for visits from Dartonfield which are costly. A Photocopying machine was provided by the SPENDP project on our request.

Construction work of the fertilizer shed and the security hut was completed during the year under review.



## **Board of Management, Committees & Staff Members**

---

### **RUBBER RESEARCH BOARD OF SRI LANKA**

#### **BOARD OF MANAGEMENT**

##### ***Members appointed by the Hon Minister of Plantation Industries***

Mr N V T A Weragoda - Chairman of the Board of Directors, Rubber Research Board of Sri Lanka

Mrs M K D N Madampe - Representative of the Treasury

Mr R A D S Ranatunge - Representative of the Ministry of Plantation Industries & Acting Director, RRI

Mr Justin Seneviratne - Representative of the Sri Lanka Association of Manufacturers & Exporters of Rubber Products

Mr R C Peiris - Representative, Planters' Association of Ceylon

Mr Anusha Perera - Representative from the Planters' Association of Ceylon

Dr J D H Wijewardana - Representative from Sri Lanka Council for Agricultural Research Policy

Mr N P C Dahanayake - Nominated Member

Mr K H M R Herath - Nominated Member

Mr E G S Premachandra - Nominated Member

Mr A B Titus Sunil Silva - Observer Member

##### ***Ex-Officio Members***

Director, Rubber Research Institute of Sri Lanka

Mr R B Premadasa, Director General, Rubber Development Department

Mr S S Poholiyadda, Chairman, Planters' Association of Ceylon

#### **STANDING COMMITTEES**

##### ***Estates Committee***

Mr N V T A Weragoda, Chairman, Rubber Research Board

Dr W M G Seneviratne, Director, Rubber Research Institute

Mr R A D S Ranatunge, Acting Director, RRI

Dr V H L Rodrigo, Additional Director, RRI

Dr (Mrs) P Seneviratne, Deputy Director Research (Biology), RRI

Dr Susantha Siriwardena, Deputy Director Research (Technology), RRI

Mr Nissanka Seneviratne, Director, Kotagala Plantations Ltd.

Mr Jagath Hettiarachchi, Senior Manager, Paiyagala Estate, Paiyagala

Mr P Gunasekera, General Manager, Namunukula Plantations Ltd.

Mr P A Lukshaman, Senior Manager - Estates, Dartonfield Group

Mr S A R Samarasekera, Manager - Estates, Kuruwita Sub-station  
Mr B S S Hewage, Senior Accountant, RRI  
Mr Ajith Withanage, Deputy Director (Administration)

***Audit and Management Committee***

Mrs M K D N Madampe, Chairman of the Committee, Treasury Representative  
Mr R B Premadasa, Director General, Rubber Development Department  
Mr R A D S Ranatunge, Representative of Ministry of Plantation Industries

***In attendance***

Ms Nilani Jayasiri, Audit Superintendent, Ministry of Plantation Industries  
Mr B S S Hewage, Senior Accountant, RRI  
Mrs S Senadheera, Internal Auditor, RRB  
Mr Ajith Vithanage, Deputy Director (Administration) (w.e.f. April 2017)

***Scientific Committee***

***Members of RRISL***

Mr N V T A Weragoda, Chairman, Rubber Research Board  
Dr W M G Seneviratne, Director, Rubber Research Institute  
Mr R A D S Ranatunge, Acting Director, RRI  
Dr V H L Rodrigo, Additional Director, RRI  
Dr (Mrs) G P W P P Seneviratne, Deputy Director Research (Biology), RRI  
Dr S Siriwardena, Deputy Director Research (Technology), RRI  
Dr D M A P Dissanayake, Head, Advisory Services Dept., RRI  
Dr (Mrs) D G Edirisinghe, Head, Rubber Technology & Development Dept., RRI  
Dr (Mrs) S P Withanage, Head, Genetics & Plant Breeding Dept., RRI  
Dr (Mrs) B W Wijesuriya, Principal Research Officer, Biometry Section, RRI  
Dr N M C Nayanakantha, Head, Plant Science Dept., RRI  
Dr (Mrs) T H P S Fernando, Principal Research Officer, Plant Pathology & Microbiology Dept., RRI  
Dr (Mrs) E S Munasinghe, Principal Research Officer, Adaptive Research Unit, RRI  
Dr (Mrs) K V V S Kudaligama, Senior Research Officer, Biochemistry & Physiology Dept., RRI  
Dr (Mrs) R P Hettiarachchi, Senior Research Officer, Soils & Plant Nutrition Dept., RRI  
Mrs A P Attanayake, Senior Research Officer, Raw Rubber & Chemical Analysis Dept., RRI  
Mr K K Liyanage, Senior Research Officer, Genetics & Plant Breeding Dept., RRI  
Mr T U K Silva, Senior Research Officer, Plant Science Dept., RRI  
Mrs B M D C Balasooriya, Research Officer, Adaptive Research Unit, RRI  
Mrs D S A Nakandala, Research Officer, Plant Science Dept., RRI  
Mrs M K R Silva, Research Officer, Plant Pathology & Microbiology Dept., RRI

Mrs P V A Anushka, Research Officer, Genetics & Plant Breeding Dept., RRI  
 Mr W D M Sampath, Research Officer, Rubber Technology & Dept., RRI  
 Mr P K K S Gunaratne, Advisory Officer, Advisory Services Dept., RRI  
 Mr R A D Ranawake, Advisory Officer, Advisory Services Dept., RRI  
 Mr J K S Sankalpa, Research Officer, Agricultural Economics Unit, RRI  
 Mr K Adikari, Research Officer, Raw Rubber & Chemical Analysis Dept., RRI  
 Mrs I H K Samarasinghe, Research Officer, Polymer Chemistry Dept., RRI  
 Mrs T T Tolshi Dahanayake, Research Officer, Genetics & Plant Breeding Dept., RRI  
 Miss K S D N Senanayake, Research Officer, Plant Science Dept. RRI  
 (up to Sept. 2017)  
 Miss B M Suboda Panditharatne, Research Officer, Plant Science Dept., RRI  
 Mrs L H Samudra Gunaratne, Research Officer, Plant Pathology & Microbiology  
 Dept., RRI  
 Mrs H A Ruwani Jayawardane, Research Officer, Soils & Plant Nutrition Dept., RRI  
 Miss N P Surani Karunaratne, Research Officer, Biochemistry & Physiology Dept.,  
 RRI  
 Miss P G N Ishani, Research Officer, Agricultural Economics Unit, RRI  
 Mr Yashoda Somaratne, Research Officer, Polymer Chemistry Dept., RRI  
 Mr Y C Yohan Sudusinghe, Research Officer, Raw Rubber Process Development &  
 Chemical Engineering Dept., RRI  
 Dr (Mrs) Lewke Bandara, Senior Research Officer, Plant Science Dept., RRI

*Members representing the Industry and other Institutions*

Mr A C Bertus, General Manager, Agalawatta PLC, No.10. Gnanarthapredeepa  
 Mawatha, Colombo 8  
 Mr D Wekunagoda, Manager, Agalawatta PLC, Kiriwanaketiya Estate, Mahagama  
 Mr L H Sampath Chandima, Manager, Agalawatta PLC, Culloden Estate, Neboda  
 Mr Harsha Hulangamuwa, Manager, Agalawatta PLC, Doloswella Estate, Nivithigala  
  
 Mr D P A Perera, Deputy General Manager, Balangoda PLC, P.O. Box 06,  
 Palmgarden, Ratnapura  
 Mr A I B Rajasinghe, Superintendent, Balangoda PLC, Palmgarden Estate, Ratnapura  
 Mr R M D T J Ratnayake, Superintendent, Balangoda PLC, Matuwagala Estate,  
 Ratnapura  
 Mr D K Wijerathne, Superintendent, Balangoda PLC, Rambukkande Estate,  
 Ratnapura  
 Mr B L L Premathilake, Superintendent, Balangoda PLC, Mahawala Estate,  
 Ratnapura  
 Mr K A R Gunaratne, Superintendent, Balangoda PLC, Galatura Estate, Kiriella  
 Mr S H M Gunawardane, Superintendent, Balangoda PLC, Millawitiya Estate,  
 Ratnapura

Mr D L D S Kandegama, Superintendent, Balangoda PLC, Rye/Wikiliya Estate, Balangoda

Mr S B Ranawaka, Superintendent, Balangoda PLC, Rassagala Estate, Balangoda

Mr Bathiya Bulumulla, CEO, Elpitiya PLC, Aitken Spence Tower 1, 19<sup>th</sup> Floor, No. 305, Vauxhall Street, Colombo 2

Mr A G Geeth Kumara, General Manager - Low Country, Elpitiya PLC, Talgaswala Estate, Talgaswala

Mr U A Karunanayake, Manager, Elpitiya PLC, Diviturai Estate, Ethkandura

Mr Pradeep Vithanage, Senior Manager, Elpitiya PLC, Bentota Estate, Elpitiya

Mr Rex Venderputt, Manager, Elpitiya PLC, Gulugahakande Estate, Wanduramba

Mr N T Dandeniya, Manager, Elpitiya PLC, Ketandola Estate, Elpitiya

Mr W R S Weerasinghe, Manager, Elpitiya PLC, Bentota Estate, Elpitiya

Mr R B S Douglas, Senior Manager, Elpitiya PLC, Elpitiya Estate, Elpitiya

Mr W A Pathirana, Director Operations, Hapugastenna PLC, Hapugastenna Tea Estate, Gallella

Mr S T M Perera, Superintendent, Hapugastenna PLC, Hatherleigh Estate, Rakwana

Mr E N Gunawardane, Manager, Hapugastenna PLC, Madampe Estate, Rakwana

Mr H Madiwaka, Superintendent, Hapugastenna PLC, Bibile Estate, Bibile

Mr H A Ariyathilake, Superintendent, Hapugastenna PLC, Hopton Estate, Lunuwila

Mr K T W Priyadarshana, Superintendent, Hapugastenna PLC, Dammeriya B Estate, Passara

Mr D M D D Diyagama, Superintendent, Hapugastenna PLC, Galbode Estate, Gallella

Mr Manuja Kariapperuma, Director/CEO, Horana PLC, 7/1, Gower Street, Colombo 5

Mr W M N Wijenayake, Manager, Horana PLC, Frocester Estate, Ingiriya

Mr B H Weerakoon, Deputy General Manager, Horana PLC, Neuchatel Estate, Neboda

Mr Indika Weerakoon, Manager, Horana PLC, Dumbara Estate, Ingiriya

Mr C D W Kirinda, Manager, Horana PLC, Hilstream Estate, Bulathsinghala

Mr N B Senevirathne, General Manager – Low Country, Kotagala PLC, Regional Office, Ellakande Estate, Horana

Mr J N Hettiarachchi, Senior Manager, Kotagala PLC, Paiyagala Estate, Dodangoda

Mr C S Amarathunga, Deputy General Manager, Kotagala PLC, Rayigam Estate, Ingiriya

Mr R A Alahakoon, Senior Manager, Kotagala PLC, Delkith Estate, Baduraliya

Mr R Tennakoon, Senior Manager, Kotagala PLC, Padukka Estate, Padukka

Mr W H R K Jayakody, Manager, Kotagala PLC, Uskvalley Estate, Baduraliya

Mr A Abeysinghe, Manager, Kotagala PLC, Sorana Estate, Horana

Mr Nalin Wijerathne, Manager, Kotagala PLC, Arappolakanda Estate, Tebuwana

Mr Nalin Ranasinghe, Manager, Kotagala PLC, Millewa Estate, Tebuwana

Mr Udara Premathilake, General Manager – Low Country, Kelanivelly PLC, No. 400, Deans Road, Colombo 10

Mr Ranil Fernando, DGM – Rubber Marketing & Administration, Kelanivelly PLC, No.400, Deans Road, Colombo 10

Mr Buddhi Gunasekera, RGM, Kelanivelly PLC, Panawatte Estate, Yatiyantota

Mr Senaka Fernando, DGM, Kelanivelly PLC, Dewalakande Estate, Dehiowita

Mr Ravi Madawala, Manager, Kelanivelly PLC, Urumiwella Estate, Bulathkohupitiya

Mr R L Obeysekera, Manager, Kelanivelly PLC, Kiriporuwa Estate, Yatiyantota

Mr E M R B Ratnayake, Manager, Kelanivelly PLC, We Oya Estate, Yatiyantota

Mr P K A H Thilakarathne, Manager, Kelanivelly PLC, Lavant Estate, Yatiyantota

Mr S A Eriyagama, Director/CEO, Kegalle PLC, 310, High Level Road, Nawinna, Maharagama

Mr B M J A Moonemalle, Superintendent, Kegalle PLC, Weniwella Estate, Alauwa

Mr S A A P Jayathilake, Superintendent, Kegalle PLC, Parambe Estate, Undugoda

Mr A C S Munaweera, Superintendent, Kegalle PLC, Eadella Estate, Polgahawela

Mr S D Munasinghe, Superintendent, Kegalle PLC, Etana Estate, Warakapola

Mr N D Madawala, Superintendent, Kegalle PLC, Parambe Estate, Undugoda

Mr Viren Ruberu, Director/CEO, Kahawatte PLC, 52, Maligawatta Road, Colombo 10

Mr Sujiva Godage, DGM, Kahawatte PLC, DGM Office, Godellawatte, Sannasgama, Lellopitiya

Mr Lakkhana Perera, Manager, Kahawatta PLC, Houpe Estate, Kahawatta

Mr T V Jayasekara, Agronomist, Kahawatte PLC, DGM Office, Godellawatte, Sannasgama, Lellopitiya

Mr Jeewantha Senaratne, Senior Manager, Kahawatte PLC, Rilhena Estate, Pelmadulla

Mr Suneth Hewage, Deputy Manager, Kahawatte PLC, Hunuwala Estate, Openayake

Mr Madushanka Dunusinghe, Manager, Kahawatte PLC, Pelmadulla Estate, Kahawatte

Mr R Suranjana Waidyanatha, Manager, Kahawatte PLC, Wellandura Estate, Kahawatte

Mr Indrajith Rukmal, Manager, Kahawatte PLC, Ekkerella Estate, Openayake

Mr V Karunaratne, Manager, Kahawatte PLC, Poranuwa Estate, Kahawatte

Mr Gaya Weerasekara, Manager, Kahawatte PLC, Opatha Estate, Kahawatte

Mr Albert Peries, General Manager Estates, Lalan Rubbers (Pvt) Ltd., No.54, Kirulapana Avenue, Colombo 6

Mr Nishantha Senaviratne, Group General Manager, Lalan Rubbers (Pvt) Ltd., Sapumalkande Estate, Deraniyagala

Mr Indika Wakkumbura, Manager, Lalan Rubbers (Pvt) Ltd., Mahaoya Group,  
Deraniyagala

Mr D U H Bulugahapitiya, Senior Manager, Malwatte Valley PLC, Talgaswela  
Estate, Talgaswela

Mr Kristoper Fernando, Executive Director, Malwatte Valley PLC, No. 280, Dam  
Street, Colombo 12

Mr R M V Ratnayake, Superintendent, Malwatte Valley PLC, Moraliyoya Estate,  
Ruwanwella

Mr K M Wilson, DGM, Maturata Plantations Ltd., Diddenipotha Estate, Mulatiyana  
Junction, Matara

Mr M H P Gunarathne, Superintendent, Maturata Plantations Ltd., Andapana Estate,  
Kamburupitiya

Mr Buddika Madagama, Superintendent, Maturata Plantations Ltd., Wilpita Estate,  
Akuressa

Mr P de S A Gunasekera, DGM, Namunukula PLC, Baddegama Estate, Baddegama

Mr S M Doranegama, Superintendent, Namunukula PLC, Pallegoda Estate, Dharga  
Town

Mr S B Dissanayake, Superintendent, Namunukula PLC, Yatadola Estate, Matugama

Mr J Weerasekara, Superintendent, Namunukula PLC, Eladuwa Estate, Matugama

Mr Anusha Perera, Chief Operating Officer - Rubber, Pussellawa PLC, Level 11,  
FLC Tower, No. 19, Dudley Senanayaka Mawatha, Colombo 8

Mr D D G N Dodangoda, Senior Manager, Pussellawa PLC, Siriniwasa Estate, Waga

Mr A M A S Dhanasekara, DGM, Pussellawa PLC, Pambegama Estate, Parakaduwa

Mr R Seneviratne, DGM, Pussellawa PLC, Halpe Estate, Tummodera

Mr M P K Udugampola, DGM, Pussellawa PLC, Elston Estate, Puwakkpitiya

Mr W R W M A B Weerakoon, Superintendent, Pussellawa PLC, Penrith Estate,  
Avisawella

Mr J A D C Jayalath, Superintendent, Pussellawa PLC, Pussella Estate, Parakaduwa

Mr C M Hettiarachchi, Superintendent, Pussellawa PLC, Ayr Estate, Bope, Padukka

Mr Binesh Pananwala, Deputy CEO, Watawala PLC, No.60, Dharmapala Mawatha,  
Colombo 3

Mr Yajith de Silva, Consultant, Watawala PLC, No. 60, Dharmapala Mawatha,  
Colombo 3

Mr Chamika Naranapitiya, DGM, Watawala PLC, No.60, Dharmapala Mawatha,  
Colombo 3

Mr Danushka Daswatte, Senior Manager, Watawala PLC, Nakiyadeniya Estate,  
Nakiyadeniya

Mr Gaya Nakandala, Project Consultant, Wellassa Rubber Co, Tissa Jinasena Group,  
57, Lake Crescent, Colombo 2

Mr Asoka Jayasekera, Project Consultant, Wellassa Rubber Co, C/O Tissa Jinasena  
Group, 57 Lake Crescent, Colombo 2

Mr Clinton N M Rodrigo, Agricultural Consultant, 25/45, Kalinga Mawatha, Vijaya  
Kumaratunga Mw, Colombo 5

Mr S W Karunaratne, Consultant, Mallikarama Road, Ratmalana

Mr N M Amarasekara, Consultant, 37/9, Terramec Avenue, Mt. Lavinia

Mr Sarath Senevirathne, Senevirathne Group, 2/4B, D.J. Wijesiriwardane Road,  
Mt. Lavinia

Mr Jayantha P Muthutantri, Consultant, No.4/4, Nelum Mawatha, Sirimal Uyana,  
Mt. Lavinia

***Provident Fund Committee***

Mr N V T A Weragoda, Chairman, Rubber Research Board

Dr W M G Seneviratne, Director, Rubber Research Institute

Mr Ajith Withanage, Deputy Director (Administration), Secretary

Mr T B Dissanayake, Elected Committee Member

Mr R A D Ranawaka, Elected Committee Member

Mr B S S Hewage, Senior Accountant, RRI (In attendance)

***Chairman's Office & Board Secretariat***

Chairman

- Mr N V T A Weragoda

Acting Secretary to the Board

- Dr (Mrs) Wasana Wijesuriya

Personal Assistant to the Chairman

- Mrs B H P Balasuriya

Management Assistants

- Mrs H N Kanchana

- Mrs P S Ishara

**Lawyers**

Attorney General

Attorney General's Department

(Government Institutions)

P O Box 502

Colombo 12

**Bankers**

Bank of Ceylon

Corporate Branch

75, Janadhipathi Mawatha

Colombo 1

Bank of Ceylon

No.306/72,

Agalawatta

**Auditors**

Auditor General

Auditor General's Department

No.306/72, Polduwa Road,

Battaramulla

**Contact details:**

**Head Office and Laboratories**

*Dartonfield, Agalawatta*

Telephones:

Director 034 - 2248457

Additional Director 034 - 2248458

Deputy Director Research (Biology) 034 - 3346118

General 034 - 2247426

034 - 2247383

034 - 3349999

034 - 2248459

Fax: 034 - 2247427

e-mail [dirri@sltnet.lk](mailto:dirri@sltnet.lk)

Website [www.rrisl.lk](http://www.rrisl.lk)

**Board Office and Rubber Chemistry & Technology Laboratories**

*Telewela Road, Ratmalana*

Telephones:

Chairman 011 - 2635019

Fax 011 - 2633353

Board Office 011 - 2635142

Fax 011 - 2605171

Director 011 - 2633351

Fax 011 - 2633351

Deputy Director Research (Technology) 011 - 2633352

General 011 - 2635851

011 - 2635852

Fax: 011 - 2605171

e-mail [dirrub@sltnet.lk](mailto:dirrub@sltnet.lk),

[rubberresearch@gmail.com](mailto:rubberresearch@gmail.com)

**Sub stations**

**Nivitigalakele - Substation, Matugama**

Genetics and Plant Breeding Department

Telephone: 034 - 2247368, 034 - 2247199

e-mail: [rrigpb@sltnet.lk](mailto:rrigpb@sltnet.lk)

**Kuruwita - Substation, Ratnapura**

Telephone: 045 - 2262115, 045 - 3460537

e-mail: [rrikuruwita@sltnet.lk](mailto:rrikuruwita@sltnet.lk)



**Polgahawela - Substation, Polgahawela**

Telephone: 037 - 3378191

**Monaragala - Substation, Monaragala**

Telephone: 055 - 3600707

Website: [www.rrisl.lk](http://www.rrisl.lk)

## RUBBER RESEARCH INSTITUTE OF SRI LANKA

### STAFF

#### DIRECTORATE

<i>Director</i>	W M G Seneviratne, BSc (SL), PhD (Sussex) (Stationed at the Ministry of Plantation Industries)
<i>Acting Director</i>	R A D S Ranatunge, BSc Agric (SL), MPA (SL), MDP (Queensland)
<i>Additional Director</i>	V H L Rodrigo, BSc Agric (SL), MSc (Essex) PhD (Wales)
<i>Deputy Director Research (Bio.)</i>	Mrs G P W P P Seneviratne, BSc (SL), PhD (Bath)
<i>Deputy Director Research (Tech.)</i>	S Siriwardene, BSc (SL), MSc (Australia) PhD (Malaysia)
<i>Deputy Director (Administration)</i>	Ajith Withanage, BLE, MHRM, EDBA (w.e.f. April 2017)

#### RESEARCH DEPARTMENTS

##### **Agronomy departments**

<b>Genetics and Plant Breeding</b>	<i>(at Nivithigalakele Substation, Matugama)</i>
<i>Head of Department</i>	Mrs S P Withanage, BSc Agric (SL), MSc (India), PhD (Malaysia)
<i>Senior Research Officer</i>	K K Liyanage, BSc Agric (SL) MPhil (SL)
<i>Research Officers</i>	Mrs P V A Anushka, BSc Agric (SL) Mrs T T D Dahanayake, BSc Agric (SL)
<i>Experimental Officers</i>	I D M J Sarath Kumara T B Dissanayake T M S K Gunasekera H P Peries, Dip. Agric (Kundasale)
<i>Technical Officers</i>	Mrs A K Gamage, BSc (SL)
<i>(Research &amp; Development)</i>	B W A N Baddewithana, BSc Agric. (SL) Miss W D A R Tharanga, BSc (SL) Mrs Y S L Kumaranayake, BSc (SL) (w.e.f. August 2017)
<i>Management Assistants (Clerical)</i>	Mrs S D P K L Peiris

<b>Plant Science</b>	<i>(at Dartonfield, Agalawatta)</i>
<i>Head of Department</i>	N M C Nayanakantha, BSc (SL), MSc (India), PhD (India)

<i>Senior Research Officer</i>	T U K Silva, BSc Agric (SL), MPhil (SL) (w.e.f. Sept. 2017)
<i>Research Officers</i>	Mrs D S A Nakandala, BSc Agric (SL) Miss B M S S Panditharatne, BSc Agric. (SL) Miss K S D N Senanayake, BSc Agric. (SL) (up to Sept. 2017)
<i>Experimental Officers</i>	Mrs G A S Wijesekera Mrs R K Samarasekera W D M N de Alwis, BSc (SL) D L N de Zoysa P D Pathirana, BSc (SL) P K W Karunathilake, Dip. Agric (Ratnapura) R Handapangoda, BSc Agric (SL) Mrs U Dissanayake, Dip. in Agric. (Naiwala) BSc (SL) H A U Deshapriya, BSc (SL) (up to 20.02.2017) Miss W K S W Watawala, BSc (SL) (w.e.f. 02.01.2017) R P D Priyadharshana, BSc (SL) (w.e.f. July 2017) Miss H M Subsinghe, BSc (SL) (w.e.f. July 2017) Mrs U N Udaya Kumari, BSc (SL) (w.e.f. Nov.2017) D D N Amenda, Dip. in Agric (July - October 2017)
<i>Management Assistants (Clerical)</i>	Mrs H D D E Jayawardena Mrs Aruni de Almeida
<b>Plant Pathology and Microbiology</b> <i>(at Dartonfield, Agalawatta)</i>	
<i>Principal Research Officer</i>	Mrs T H P S Fernando, BSc (SL), MPhil (SL), PhD (SL) (w.e.f. February 2017)
<i>Research Officers</i>	Mrs M K R Silva, BSc Agric (SL), MSc (SL) Mrs L H S N Gunaratne, BSc Agric (SL)
<i>Experimental Officers</i>	Mrs B I Tennakoon, Dip. Agric (Kundasale) Mrs E A D D Siriwardene, BSc (SL) S C P Wijayaratne, NDT Agric (Hardy) *E A D N Nishantha, Dip. Agric. (Ratnapura), BIS (Agric) (SL)
<i>Technical Officers</i> <i>(Research &amp; Development)</i>	P W Balasooriya, BSc (SL) (w.e.f. January 2017) Miss R D N S Gunasekera, Dip. in Agric. (w.e.f. September 2017) Miss S A D T L Wijesundera, BSc (SL) (July - November 2017)

<i>Technical Officers (Research &amp; Development)</i>	Miss J Wijesinghe, BSc (SL) (January - February 2017) Miss W R N M Gunawardena, Dip. in Agric (July - October 2017)
<i>Management Assistant (Clerical)</i>	Mrs K A D Y Madushani Lanka
<b>Soils and Plant Nutrition</b>	<i>(at Dartonfield, Agalawatta)</i>
<i>Senior Research Officer</i>	Mrs R P Hettiarachchi, BSc (SL), MPhil (SL), PhD (SL)
<i>Research Officer</i>	Mrs H A R K Jayawardana, BSc Agric. (SL)
<i>Experimental Officers</i>	Miss V U Edirimanne, BSc (SL) Miss A P Thewarapperuma P D T C Gunatilleke, NDT (Agric) J A Sarath Chandrasiri
<i>Technical Officers (Research &amp; Development)</i>	Mrs Eranga de Silva, NDT C G Mallawaarachchi, Dip. in Agric. (Hardy) Mrs M Kulathunga, BSc (SL) Mrs R M Baddevidana, BSc (SL) (w.e.f. January 2017) Mrs P D S D O Rathnasooriya, BSc (SL) (w.e.f. January 2017) M H W Gayan, BSc (SL) (w.e.f. January 2017) S L N S L Madushanka, BSc (SL) (w.e.f. July 2017) Mrs N S Siriwardena, BSc (SL) (w.e.f. July 2017) Miss R Udari, BSc (SL) (January – February 2017) Miss K A M Y C Jayatissa, BSc (SL) (July - December 2017)
<i>Management Assistant (Stenography)</i>	Mrs K A D L Rupasinghe Perera
<b>Biochemistry and Physiology</b>	<i>(at Dartonfield, Agalawatta)</i>
<i>Senior Research Officer</i>	Mrs K V V S Kudaligama, BSc (SL), MPhil (SL), PhD (SL)
<i>Research Officer</i>	Miss N P S N Karunaratne, BSc (SL)
<i>Experimental Officers</i>	M K P Perera, BSc (SL)
<i>Technical Officers (Research &amp; Development)</i>	Mrs P A D T L Madushani, Diploma in Agric. Miss N N Abewardena, BSc (SL) (w.e.f. January 2017) P S Sandaruwan, BSc (SL) (July - Sept. 2017)
<i>Management Assistant (Clerical)</i>	Mrs H A Manoji Erandika

**Advisory Services**  
*Head of Department*

*Advisory Officers*

*Assistant Training Officer*  
*Rubber Extension Officers*

*(at Telewela Road, Ratmalana)*

D M A P Dissanayake, BSc Agric. (SL)  
PhD (Aberdeen)

P K K S Gunaratne, BSc Agric. (SL)  
R A D Ranawaka

Miss K G P Manahari, BSc (SL)

W D T C Muniratne, Dip. Plant Ex. Mangt.  
(up to November 2017)

R M S Ratnayake, NDT Agric. (Hardy)

D E P M Nanayakkara, Dip. Agric. (Aquinas)

M Dharmadasa, BSc (SL), MSc (SL)

E G U Dhanawardena

Nihal Gamage, Dip. Agric. (Angunakolapelessa)

U N Jayasuriya

G D N Seneviratne

S G G Wijesinghe

N G Yasaratne (up to January 2017)

I P L Kithsiri

W M A S L Wanigasuriya, Dip. Agric. (Aquinas)

N L Dharmasena

W P G D C P K Senanayake, NDT Agric. (Hardy)

T L Ramanayake, BSc (SL)

A R Kulathunga, BSc (SL)

H G M G Jayasinghe, BSc (SL)

(w.e.f. January 2017)

K D K L Siriwardena, BSc (SL)

(w.e.f. January 2017)

S G Hewanambikanda, BSc (SL)

(w.e.f. January 2017)

Miss K K I Jayasundera, BSc (SL)

(w.e.f. February 2017)

D S Dissanayake, BSc (SL) (from July 2017)

Mrs G R Tennakoon, BSc (SL) (w.e.f. July 2017)

S M A Samarakoon, Dip. Agric. (Kundasale)

Mrs M K Wijetilleke (up to October 2017)

Miss S V Shirani Madurika, BA (SL)

(up to 20.02.2017)

Mrs C Gunatilleke

Mrs J N R Jayasinghe

R G A S Dharmaratne

Mrs S M Kaluarachchi

T R C Silva

Mrs K Y G M P Kumari, BA (SL)

*Experimental Officer*  
*Management Assistants (Clerical)*

## Technology departments

### **Rubber Technology and Development** *(at Telewela Road, Ratmalana)*

<i>Head of Department</i>	Mrs D G Edirisinghe, BSc (SL), MSc (SL) MPhil (UK), PhD (SL)
<i>Research Officer</i>	W D M Sampath, BSc (SL)
<i>Experimental Officers</i>	Mrs S I Yapa, Dip. Rubber Tech. (PRI) S L G Ranjith, Dip. Rubber Tech. (PRI), BSc (SL) P L Perera Mrs G M Priyanthi Perera, BSc (SL), MSc (SL)
<i>Technical Officers (Research &amp; Development)</i>	V G M J Abeywardena, NDT Miss S G P Bhagayawedha, NDT K I D P Perera, BSc (SL) Miss P K I L Jayaratne, BSc (SL) (w.e.f. July 2017) P D A Gunasekera, BSc (SL) (w.e.f. July 2017)
<i>Management Assistant (Clerical)</i>	Miss S M D S R de A Wijeratne

### **Polymer Chemistry**

<i>Research Officer</i>	<i>(at Telewela Road, Ratmalana)</i> Mrs I H K Samarasinghe, BSc (SL) Y R Somaratne, BSc (SL)
<i>Experimental Officer</i>	Mrs N Jayawardane, Dip. Agric. (Bibile)
<i>Technical Officers (Research &amp; Development)</i>	Mrs H M H Dhanukamalee, BSc (SL) Miss P S V Rupasinghe, BSc (SL) (w.e.f. February 2017) D V D Mallikarachchi, BSc (SL) (w.e.f. July 2017) Miss H L T Tharaka, BSc (SL) (w.e.f. Sept. 2017)
<i>Management Assistant (Clerical)</i>	M A W K Tillekeratne

### **Raw Rubber and Chemical Analysis** *(at Telewela Road, Ratmalana)*

<i>Senior Research Officer</i>	Mrs A P Attanayake, BSc (SL), PhD (SL) (w.e.f. September 2017)
<i>Research Officer</i>	A M K S P Adikari, BSc (SL), MPhil (SL)
<i>Experimental Officers</i>	Mrs H V K Gamage Mrs C S Lokuge Miss D M S Wijesekera, Dip. Rubber Tech. (PRI) L P P Vitharana
<i>Technical Officers (Research &amp; Development)</i>	Miss S P Wijewardena, BSc (SL) Miss N C Y Kithmini, BSc (SL) (w.e.f. January 2017)

*Technical Officers (Research & Development)*

Miss M U D S Weerasinghe, BSc (SL)  
(w.e.f. January 2017)  
Miss L K I Madushani, BSc (SL)  
(from January – September 2017)  
H D M S Wijewardena, BSc (SL)  
(w.e.f. July 2017)  
K A S T Koswatta, BSc (SL) (w.e.f. July 2017)  
Miss W D D Samanmali

*Management Assistant (Clerical)*

**Raw Rubber Process Development and Chemical Engineering**

*(at Telewela Road, Ratmalana)*

*Research Officer*

*Experimental Officers*

Y C Y Sudusinghe, BSc (SL)  
Mrs W K C Nalinie, Dip. Rubber Tech. (PRI)  
Mrs U M S Priyanka, BSc (SL), MSc (SL)  
Mrs V C Rohanadeepa  
A K D W Prasad  
R D Illeperuma, BSc (SL) (w.e.f. January 2017)  
Miss P K N N Sandamali, BSc (SL)  
(w.e.f. January 2017)  
W R U de Silva, Dip. in Chem. (w.e.f. July 2017)  
Miss H A Janani Lakshika, BA (SL)  
Miss A R M de Alwis  
Mrs K K Geetha, BA (SL)  
Miss P D S Dilhani

*Technical Officers (Research & Development)*

*Management Assistants (Clerical)*

**Sections/Units**

**Biometry Section**

*Principal Research Officer*

*Experimental Officers*

*Management Assistants (Clerical)*

*(at Dartonfield, Agalawatta)*

Mrs B W Wijesuriya, BSc Agric (SL),  
MPhil (SL), PhD (SL)  
Mrs H K D C S Munasinghe, NCT Polymer  
(Moratuwa), Dip. Rubber Tech. (PRI),  
Dip. Computer Science (IDM)  
O V Abeyawardene, Dip. Agric. (Kundasale)  
Mrs W W L S Shashikala, BA (SL)

**Adaptive Research Unit**

*Principal Research Officers*

*Research Officer*

*(at Dartonfield, Agalawatta)*

S M M Iqbal, BSc Agric. (SL), MPhil (SL)  
PhD (Essex) (up to 21.04.2017)  
Mrs E S Munasinghe, BSc Agric (SL), PhD (SL)  
(w.e.f. February 2017)  
Mrs B M D C Balasooriya, BSc Agric (SL)

<i>Technical Officer (Research &amp; Development)</i>	P M M Jayatilleke, NDT (Agric.) Mrs N M Piyasena, Dip. in Agric. (w.e.f. July 2017)
<i>Management Assistant (Clerical)</i>	Mrs M A Randima Srimalee
<b>Agricultural Economics Unit</b> <i>Research Officers</i>	(at Dartonfield, Agalawatta) J K S Sankalpa, BSc (SL), MSc (SL) Miss P G N Ishani, BSc Agric. (SL)
<b>Library and Publications Unit</b> <i>Librarian</i>	(at Dartonfield, Agalawatta) S U Amarasinghe, BSc (SL), MA (SL), ASLLA (up to 15.06.2017)
<i>Library Assistant &amp; Assistant Publication Officer</i>	Mrs R M Amaratunga, Intermediate; Lib. Sci. Doc. & Info. (SLLA)
<i>Library Assistant &amp; Publication Assistant</i>	Mrs D N C Amarathunga (w.e.f. January 2017)
<i>Management Assistants (Clerical)</i>	P M P Jayantha N W E C Maduranga
<b>Audio Visual and Information Technology Unit</b> <i>Network Administrator</i>	(at Dartonfield, Agalawatta) S R D C P Peiris, BSc (SL)
<b>Administration Department (Agalawatta)</b> <i>Senior Administrative Officer</i>	(at Dartonfield, Agalawatta) D M S Dissanayake, BSc (Mgt.) (SL), MHRM (SL)
<i>Registered Medical Practitioner</i>	M Subasinghe
<i>Administrative Officer</i>	Mrs P Mandalawatta (Dip. in HRM)
<i>Management Assistants (Clerical)</i>	Mrs P W Neelamanie Mrs J A D Wijayanthi Mrs B D Niranjala Mrs O W D Namali Udayanthi Mrs P C Athukorala Mrs Thamosha Munasinghe Mrs O W D Nilusha Udayanthi Mrs M N D Perera Mrs B Chandralatha, BA (SL) Miss M G L Niroshani
<i>Management Assistant (Stenography)</i>	Mrs J A H S Kumari
<i>Telephone Operator</i>	Mrs J A D C Preethika
<i>Pharmacist</i>	Mrs W H A Manohari (w.e.f. October 2017)



<b>Administration Unit (Ratmalana)</b>	<i>(at Telewela Road, Ratmalana)</i>
<i>Administrative Officer</i>	Mrs U K Akila Tharinduni, BSc (SL) (w.e.f. September 2017)
<i>Management Assistant (Clerical)</i>	A T Senaratne D P N P Dissanayke
<i>Telephone Operator</i>	Miss G D D Kalamini (w.e.f. 02.01.2017)
<b>Internal Audit Unit</b>	<i>(at Dartonfield, Agalawatta)</i>
<i>Internal Auditor</i>	Mrs M S I Senadeera, AFA, IIPF, IRCA, LICA
<i>Internal Audit Officer</i>	K C Fernando (up to 26.07.2017)
<i>Management Assistants (Clerical)</i>	Mrs S N Munasinghe
<b>Works Section</b>	<i>(at Dartonfield, Agalawatta)</i>
<i>Engineering Assistant</i>	Mrs W D D Prasadini, NDES
<i>Technological Officer (Civil)</i>	M A D K Jayasumana, NCT
<i>Transport Officer</i>	U L D R L Gunasinghe
<i>Technological Officer (Mech.)</i>	H J P Fernando, HNDE
<i>Management Assistants (Clerical)</i>	Mrs K C S Wickremasinghe Mrs J A S Dharshanie (Dip. in Management) Mrs K K D K P Ranaweera Mrs M S W H Kumari, BSc (SL) Udaya Smantha Munindradasa, BA (SL)
<i>Work Supervisor (Electrical)</i>	T M R P Tennakoon (up to 17.05.2017)
<b>Accounts Section</b>	<i>(at Dartonfield, Agalawatta)</i>
<i>Senior Accountant</i>	S S Hewage, CPFA (UK), CBA, FPFA
<i>Accountant</i>	Mrs A M Lasanthi, BSc (SL)
<i>Accounting Assistant</i>	D D R Lankatilaka, BCom (SL) (up to August 2017)
<i>Management Assistants (Accounting)</i>	Mrs R Handungoda Mrs G P Kukulewithana
<i>Management Assistants (Clerical)</i>	Mrs K J M C R Fernando Mrs C Dissanayake A K D A Wickremasinghe Mrs S I K Pathirage Miss K T D Jayawathi (up to January 2017) Mrs S A Niluka Harshani Mrs K K D Y L Ranaweera Miss K K T L Jayasekera Miss R P Thilini J A J R Lakmal, BA (Mgt.) K A Dilan Sampath Mrs Erandi Kanchana Jayasinghe, BA (SL)

<i>Management Assistants (Clerical)</i>	Mrs S R Sinhabahu Harith Kalutharawithana, BSc (SL) G N K Gunasena Mrs K G P Hasara
<i>Cashier</i>	Mrs G A D D Jayawardena
<b>Kuruwita Sub-Station</b> <i>Manager</i> <i>Management Assistants (Clerical)</i>	(at Kuruwita) S A R Samarasekera D S Jayasinghe K D P Senaratne
<b>Polgahawela Sub-Station</b> <i>Management Assistant (Accounting)</i>	(at Narampola Estate, Nungamuwa, Yatigaloluwa) W A C Weeramanthree (up to 10.12.2017)
<b>Moneragala Sub-Station</b> <i>Field Officers</i> <i>Management Assistants (Clerical)</i>	(at Kumbukkana, Moneragala) V G D Nishantha Gunaseela N V U S Vijitha Kumara Mrs D M P Sandun Kumari M M Chamath Kumara

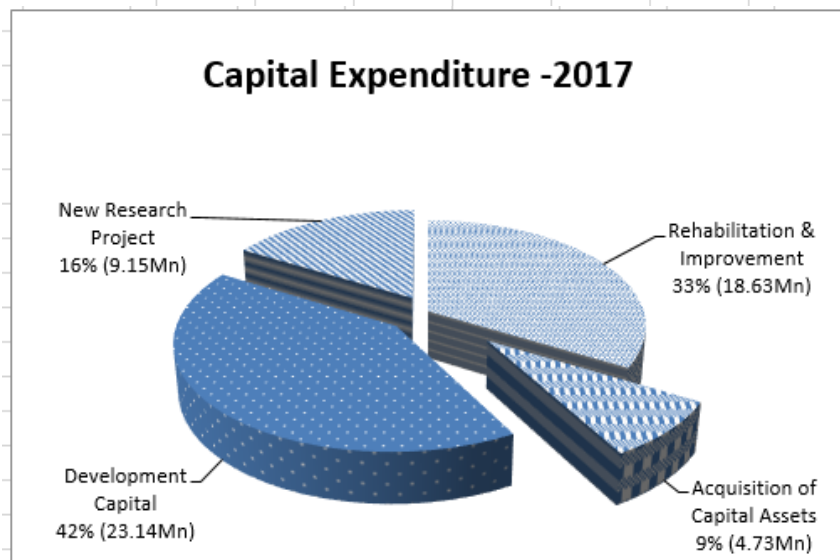
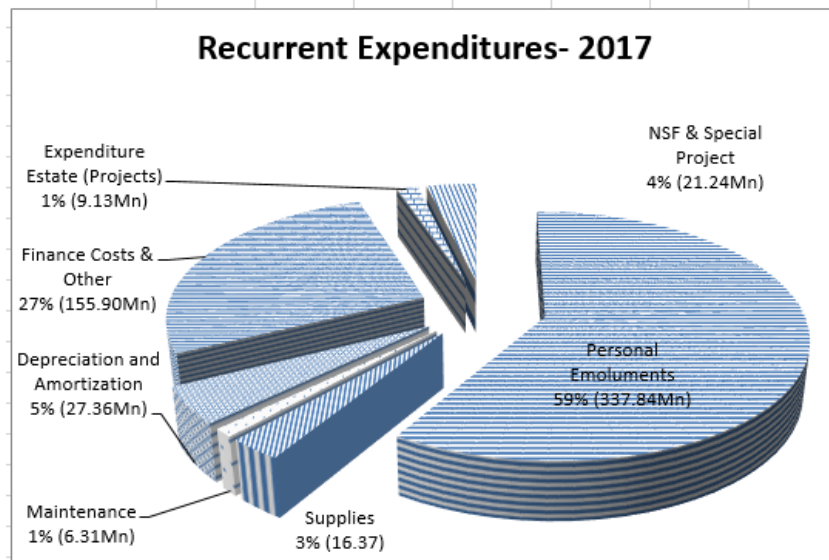
#### **DARTONFIELD GROUP**

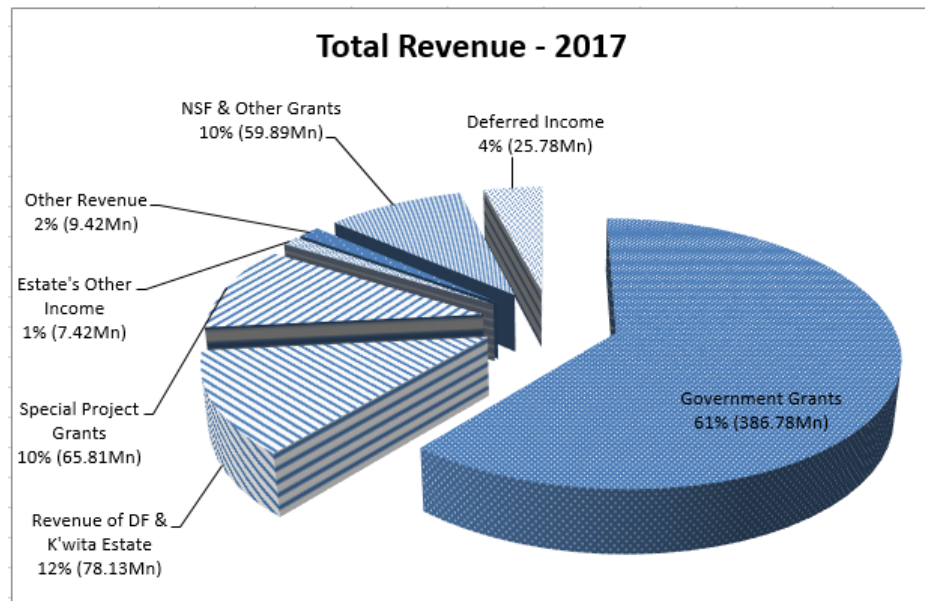
<i>Senior Manager - Estate</i> <i>Management Assistants</i>	P A Lukshaman, BSc (SL) H D D Achinda M A N Sachith Pawinda T D Harsha
<i>Field Officers (Nivitigalakele)</i>	B M Siriwardena K K S D Kumara, Dip. in Agric. (January – August 2017)

\* No pay leave

## Financial Statements

### Revenue, Recurrent Expenditures and Capital Expenditures for the Financial Year 2017





**RUBBER RESEARCH INSTITUTE OF SRI LANKA**  
**FINANCIAL STATEMENTS - 2017**  
**CONTENTS**

	<b>Page No.</b>
Statement of Financial Position as at 31.12.2017	51
Statement of Financial Performance for the year ended 31.12.2017	52
Statement of Consolidated Cash Flow as at 31.12.2017	53
Statement of Changes in Net Assets/Equity	54
Notes to the Financial Statements	55-61
Note 01- Property, Plant & Equipment	62-63
Note 02- Other Financial Assets	64
2B I Kuruwita Estate (KE)	
2B II Dartonfield Estate (DF)	
Note 03 - Other Current Assets	65
Note 04- Inventories/Stocks	66
Note 04 A - Working Progress	
Note 05- Receivables	67
Note 06- Investment	68
Note 07- Cash at Bank and Cash in Hand	
Note 08- Payables	69
Note 09- Provision for Audit Fee	70
Note 10- Provision for Gratuity	
Note 11- Capital Grants	71
Note 12- Accumulated Surpluses/(deficits)	
Note 13- Other Income	72
Note 14 - Personal Emoluments	73
Note 14A - Wages, Salaries & Employee Benefits - DF Estate	74
Note 14B - Wages, Salaries & Employee Benefits - Kuruwita Estate	75
Note 14C - Wages, Salaries & Employee Benefits Monaragala Substation & Polgahawela Sub Station	76
Note 15 - Travelling	77
Note 16- Suppliers and Consumables	78
Note 17- Depreciation of Non Current Assets	79
Note 18- Maintenance & Operational Expenditure Vehicles	80
Note 19- Contractual Services	81
Note 20- Research and Departments Exp.	82
Note 21- Other Operating Expenses	83
Note 22- Dartonfield Group Estate Working Accounts	84
Note 23- Kuruwita Estate Working Accounts	85

Note 24- Kumarawatta Estate Working Accounts	86
Note 25- Narampola Estate Working Accounts	
Note 26A – NSF Grants	87
Note 26B – Special Projects	88
Schedule 01 - Inventories/Stocks RRI	89
Schedule 02 - Stock Value - Kuruwita Estate	90
Schedule 03 - Stock Value - Dartonfield Estate	91
Schedule 04 - Deposits	92
Schedule 05 - Other Debtors, General Debtors, Debtors, Loan Receivables	93 94
Schedule 06 - Doubtful Debtors	94
Schedule 07 - Trade & Other Receivable – Kuruwita Trade & Other Receivable – DF Estate	95 95
Schedule 08 - Creditors	96
Schedule 09 - Payables Kuruwita Estate	97
Schedule 10 - Payables DF Estate	98 98
Schedule 11 - Accrued Expenses	99
11 – i RRI	
11 – ii Kuruwita Estate	
11 – iii Df Estate	
Schedule 12 - Other Capital Grants	100
Labour rates and break down of COP in Dartonfield & Kuruwita	101

**RUBBER RESEARCH BOARD OF SRI LANKA - STATEMENT OF FINANCIAL POSITION  
AS AT DECEMBER 31, 2017**


		<b>2017</b>		<b>2016</b>	
<b>ASSETS</b>	<b>Note</b>	<b>Rs</b>		<b>Rs</b>	
<b>Non-Current Assets</b>					
Land and Buildings	01	129,093,669.15	354,212,703.93	118,710,660.03	318,211,856.34
Infrastructure, Plant and Equipment		223,355,456.01		198,571,696.31	
Intangible Assets		1,763,578.77		929,500.00	
<b>Current Assets</b>					
Other Financial Assets	02	1,162,239.07	245,601,213.03	2,105,014.22	166,379,215.26
Other Current Assets	03	74,461,291.11		32,092,836.52	
Inventories	04	18,328,099.56		18,568,595.51	
Working Progress	04-A	14,433,676.90		-	
Receivables	05	12,486,666.35		13,689,133.05	
Investments in Associates	06			520,368.57	
Cash and cash Equivalents	07	124,729,240.04		99,403,267.39	
<b>Total Assets</b>			599,813,916.96		484,591,071.60
<b>LIABILITIES</b>					
<b>Current Liabilities</b>					
Payables	08	(75,898,415.51)	(76,998,415.51)	(65,639,034.77)	(67,517,616.16)
Short -Term Provisions	09	(1,100,000.00)		(1,878,581.39)	
<b>Non-Current liabilities</b>					
Employee Benefits	10	(125,509,973.50)	(125,509,973.50)	(112,740,525.50)	(112,740,525.50)
<b>Total Liabilities</b>			(202,508,389.01)		(180,258,141.66)
<b>Total Net Assets</b>			<b>397,305,527.95</b>		<b>304,332,929.94</b>
<b>NET ASSETS/EQUITY</b>					
Accumulated Fund	11	879,654,719.38		749,970,269.54	
Accumulated Surpluses/(Deficits)	12	(482,349,191.43)		(445,637,339.60)	
<b>TOTAL NET ASSETS/EQUITY</b>			<b>397,305,527.95</b>		<b>304,332,929.94</b>

The governing body of an entity is responsible for the preparation and presentation of its financial statements and which should also contain a statement of responsibility.

The accounting policies on pages from 55 to 61 and the notes & Schedule of the Accounting pages from 13 to 50 from and integral part of these financial statements.

The Board of Governors is responsible for the preparation and presentation of these financial statements. These financial statements were approved by the Board of Governors and signed on their behalf.

  
N.V.T.A. Weragoda  
Chairman - RRB

  
Dr W.M.G. Seneviratne  
Director - RRI

  
R.A.D.S. Ranathunga  
Board Member

  
B.S.S. Hewage  
Senior Accountant - RRI

**RUBBER RESEARCH BOARD OF SRI LANKA**  
**STATEMENT OF FINANCIAL PERFORMANCE FOR THE YEAR ENDED DECEMBER 31, 2017**

Revenue	Note	RRI		Df. Estate		K'wita Estate		Kumarawatta Estate		Narampola Estate		Total	
		2017	2016	2017	2016	2017	2016	2017	2016	2017	2016	2017	2016
		Rs		Rs		Rs		Rs		Rs		Rs	
Transfers from other government entities		386,780,000.00	359,812,000.00									386,780,000.00	359,812,000.00
Other revenue	13	9,421,261.97	11,252,103.50									9,421,261.97	11,252,103.50
Deferred Income		25,776,641.52	22,371,751.14									25,776,641.52	22,371,751.14
Gross Profit Df. Estate & K'wita Estate	22,23			52,937,526.85	36,777,149.17	25,196,451.06	22,967,272.59					78,133,977.91	59,744,421.76
Other Income Estate (Projects)	22,23,24,25			4,837,246.78	4,302,359.70	1,191,014.52	969,697.18	10,367.50	2,704.40	1,382,416.79	2,193,335.99	7,421,045.59	7,468,097.27
Special Project		17,961,056.82										17,961,056.82	
NSF Grant	26	3,279,249.18	1,883,650.92									3,279,249.18	1,883,650.92
<b>Total Revenue</b>		<b>443,218,209.49</b>	<b>395,319,505.56</b>	<b>57,774,773.63</b>	<b>41,079,508.87</b>	<b>26,387,465.58</b>	<b>23,936,969.77</b>	<b>10,367.50</b>	<b>2,704.40</b>	<b>1,382,416.79</b>	<b>2,193,335.99</b>	<b>528,773,232.99</b>	<b>462,532,024.59</b>
<b>Less: Expenses</b>													
Wages, Salaries and employee benefits	14, 15, 14A, 14 B, 14C	285,404,373.97	270,703,677.96	28,964,986.54	32,359,597.40	16,841,774.52	15,690,813.66	4,182,430.59	3,871,999.49	2,448,168.53	3,336,364.57	337,841,734.15	325,962,453.08
Supplies and consumables used	16, 14A, 14B, 14C	12,477,779.01	12,837,938.39	2,435,855.01	1,943,440.82	1,080,481.80	863,925.05	295,758.25	707,705.48	75,571.58	271,023.59	16,365,445.65	16,624,033.33
Depreciation and amortization expenses	17, 14A, 14B, 14C	25,776,641.52	22,371,751.14	1,195,710.34	1,310,196.72	388,696.61	381,079.08					27,361,048.47	24,063,026.94
Maintenance of property, plant and equipment	14A			6,315,472.59	5,697,286.35							6,315,472.59	5,697,286.35
Other expenses	18, 19, 20, 21, 14A, 14B, 14C	153,562,354.63	105,041,650.45	381,037.11	701,723.68	129,277.64	178,062.40	631,188.63	141,823.49	398,536.72	103,221.75	155,102,394.73	106,166,481.77
Finance Costs	14A, 14B	69,100.00	120,586.00	527,785.78	459,940.35	204,427.60	110,531.66					801,313.38	691,058.01
Other Expenditure Estate (Projects)	22,23			6,673,963.59	626,029.11	2,453,948.25	1,536,309.08					9,127,911.84	2,162,338.19
Special Project		17,961,056.82										17,961,056.82	
NSF Expenditure	26	3,279,249.18	1,883,650.92									3,279,249.18	1,883,650.92
<b>Total Expenses</b>		<b>498,530,555.13</b>	<b>412,959,254.86</b>	<b>46,494,810.96</b>	<b>43,098,214.43</b>	<b>21,098,606.42</b>	<b>18,760,720.93</b>	<b>5,109,377.47</b>	<b>4,721,528.46</b>	<b>2,922,276.83</b>	<b>3,710,609.91</b>	<b>574,155,626.81</b>	<b>483,250,328.59</b>
<b>Surplus/(Deficit) for the Period</b>		<b>(55,312,345.64)</b>	<b>(17,639,749.30)</b>	<b>11,279,962.67</b>	<b>(2,018,705.56)</b>	<b>5,288,859.16</b>	<b>5,176,248.84</b>	<b>(5,099,009.97)</b>	<b>(4,718,824.06)</b>	<b>(1,539,860.04)</b>	<b>(1,517,273.92)</b>	<b>(45,382,393.82)</b>	<b>(20,718,304.00)</b>



**RUBBER RESEARCH BOARD OF SRI LANKA  
CONSOLIDATED CASH FLOW STATEMENT  
FOR THE YEAR ENDED 31 DECEMBER 2017**

	<b>2017</b>	
	<b>Rs</b>	
<b><u>Operating Activities</u></b>		
Surplus/Deficit		(45,382,393.82)
Non Cash Movements		
Add : Depreciations	30,550,952.34	
Less: Amortization)	-	
Add :Provision for Gratuity	12,769,448.00	
Less : Interest on Investment	(429,321.54)	
Deferred Income	(25,776,641.52)	
Prior Year adjustment	8,670,541.99	
<b>Net Cash Flow before working Capital Changes</b>		<b>25,784,979.27</b>
<b><u>Working Capital Changes</u></b>		
Increase /( Decrease) Payables	9,480,018.61	
( Increase) / Decrease other current Assets	(53,528,233.02)	
Gratuity paid	(17,900,577.00)	(61,948,791.41)
<b>Net Cash Flow form Operating Activity</b>		<b>(81,546,205.96)</b>
<b><u>Investing Activities</u></b>		
Purchase of Property ,Plant and Equipment	(66,551,799.93)	
Interest Income on Investment	429,321.54	
<b>Net Cash Flow from Investing Activity</b>		<b>(66,122,478.39)</b>
<b><u>Finance Activities</u></b>		
Fund Received from Treasury for Capital Grant	51,000,000.00	
Net Cash flow of NSF	6,480,657.00	
Fund Received for Special Project	115,514,000.00	
<b>Net Cash Flow from Financing Activity</b>		<b>172,994,657.00</b>
<b>Net Cash Flow for the Year</b>		<b>25,325,972.65</b>
<b>Cash and Cash Equivalents at Beginning of the Year</b>		<b>99,403,267.39</b>
<b>Cash and Cash Equivalents at End of the Year</b>		<b>124,729,240.04</b>

**RUBBER RESEARCH BOARD OF SRI LANKA**  
**STATEMENT OF CHANGES IN NET ASSETS/EQUITY**  
**ENDED DECEMBER 31, 2017**

ATTRIBUTABLE TO OWNERS OF THE CONTROLLING ENTITY						Minority Interest	Total net Assets/equity
	Contributed Capital	Other Reserves	Translation Reserves	Accumulated Surpluses/(Deficits)	Total		
	Rs.						
Balance at December 31, 2017							
Changes in accounting policy	749,970,269.54			(445,637,339.60)	304,332,929.94		304,332,929.94
Restated balance							
<b>Change in net asset/equity for 2017</b>							
Gain on property revaluation							
Loss on revaluation of investments							
Exchange differences on translating							
Funds Received	129,684,449.84				129,684,449.84		129,684,449.84
Prior Year Adjustment				8,670,541.99	8,670,541.99		8,670,541.99
Net revenue recognized directly in net asset/equity							
Surplus for the period				(45,382,393.82)	(45,382,393.82)		(45,382,393.82)
<b>Total recognized revenue and expenses for the period</b>							
<b>Balance at December 31, 2017</b>	<b>879,654,719.38</b>	<b>-</b>	<b>-</b>	<b>(482,349,191.43)</b>	<b>397,305,527.95</b>	<b>-</b>	<b>397,305,527.95</b>
<b>Carried forward</b>							

**RUBBER RESEARCH BOARD OF SRI LANKA**  
**Notes to the Financial Statements**

**1. Corporate Information**

**1.1 Reporting Entity**

The Rubber Research Board of Sri Lanka (RRB) was established as a Public Corporation under the Rubber Research Ordinance. This Ordinance has been amended from time to time; the most recent introduction has been the “Rubber Research Bill Part II of April 2003 with the amendment No. 28”. The RRB coming under the purview of Ministry of Plantation Industries and the registered office of the RRB is located at Thelawala Road, Rathmalana.

**1.2 Principal Activities and Nature of Operations**

The Mission of RRB is to revitalize the rubber sector by developing economically and environmentally sustainable innovations and transferring the latest technologies to the stakeholders through training and advisory services.

**1.3 Number of Employees**

The number of employees of the RRB as at 31st December 2017 amounted to 409. The comparative figure for the year 2016 was 410.

**1.4 Financial Year**

The Financial year of the RRB is the 12 months period ended by 31<sup>st</sup> December 2017.

**1.5 Date of Authorization for Issue**

The Financial Statements for the year ended 31/12/2017 of RRB were authorized for issue by the Board of Management on 12th March 2018.

**2. Significant Accounting Policies**

**2.1 Basis of preparation of Financial Statements**

The Financial Statement of the RRB is prepared in Sri Lanka Rupees on a historical cost basis and presented in Sri Lankan Rupees.

**2.2 Statement of Compliance**

The Financial Statement of the RRB has been prepared in accordance with the Sri Lanka Public Sector Accounting Standards (SLPSAS).

### **2.3. Assets and Basis of Valuation**

2.3.1 Property Plant and Equipment are recorded at cost less depreciation in the financial statement.

The cost of Property Plant and Equipment are the market value or cost of purchase with any incidental expenses.

### **2.4 Depreciation Policy**

2.4.1 Fixed Asset will not be depreciated in the year of purchasing and the depreciation will be commence as from the following year.

2.4.2 The depreciation charges are determined separately for each significant part of an item of Property, Plant and Equipment and begin to depreciate when it is available for use.

2.4.3 The provision for depreciation is calculated at written down value method on the cost of all Property Plant and Equipment. The effective rate from the year 2017 are as follows:

<b>Description</b>	<b>Life period years</b>	<b>Rate (%)</b>
Buildings	40	2.5%
Intangible Assets	5	20%
Furniture, Fittings & Office Equipment	5	20%
Power & Water Supply	10	10%
Machinery & Tools	8	12.5%
Lab Apparatus	5	20%
Motor Vehicles	5	20%
Library Books, Periodicals & Journals	5	20%
Documentary Film	8	12.5%
Earth Slip Project	25	4%
Other Assets	10	10%
Effluent Treatment Plant	25	4%
Audio Visual Equipment	5	20%

The provision for depreciation will be adjusted by using the straight line method on the cost of all Property Plant and Equipment, after completion of valuation of assets.

**2.5 Inventories**

Inventories consist of spare parts, maintenance items, cleaning materials and stationery stock etc are stated on Average cost basis.

**2.6 Receivables**

Receivables are stated at the amounts identified as active Debtors, and the balance has been transferred to the Debtors clearance account for the purpose of clearance.

**2.7 Provision for Bad and Doubtful Debts**

Provisions for bad & doubtful debts balance also transferred to Debtors clearance account for the purpose of clearance.

**2.8 Cash and cash equivalent**

Cash and cash equivalent consists of Investment, cash at banks and cash in hand.

**2.9 Conversion of foreign exchange:**

Foreign currency has been converted at prevailing rates.

**2.10 Retirement Gratuity**

Provision has been made in the Financial Statements for retirement gratuities equivalent to an amount calculated based on a half month's salary of the last month Financial Year of all employees for each completed year of service, commencing from the first year of service. However under the payment of Gratuity Act No 12 of 1983, the liability to an employee arises only on completion 5 years of continued service.

**2.11 Government Grant****2.11.1 Recurrent Grant**

The Recurrent Grant received from the government is reflected in the Income Statement as the source of income of the RRB.

**2.11.2 Capital Grant**

The Capital Grant received from the government has been set up as Deferred Income which is recognized as income on a systematic and rational basis over the useful life time of the assets.

The acquisition of Property Plant & Equipment under the Capital Grant is Rs.66,551,799.93.

**2.11.3** Replanting subsidies have been set off against replanting expenditure and net amount has been represented in the balance sheet under fixed assets.

**2.11.4 Other Grants**

National Science foundation (NSF) and Special Project Grants for the year 2017 have been shown under the Note No 26A and 26B. The amount equal to the expenditure for the year 2017 has been treated as NSF and Special Project Grants in the statement of Financial Performance.

**2.12 Deferred Income**

Deferred Income consists of the Capital Grant received from the General Treasury in the year 2017 for capital expenditure.

The Deferred Income is recognized as income on a systematic and rational basis over the useful life time of the assets in case of capital grant and amortizes the deferred income set up for capital purchases.

**2.13 Revenue Recognition**

Institute generates Revenue from the following sources, and recognizes such revenues for accounting purposes on the accruals basis.

- (a) By providing Testing and Analytical Fees
- (b) By organizing Seminars and Work Shops
- (c) Sale of Publications
- (d) Sale of Tapping Knives
- (e) Sundry Receipts

**2.14 Expenditure**

All expenditures are recognized on the accrual basis.

**2.15 Adjustments made to the Cumulative Expenditure**

Adjustment of Rs.8,670,541.99 has been made to the cumulative expenditure account.

**3. Legal Matters**

Legal issues pertaining to matters of employees were pending at Courts as at 31<sup>st</sup> December 2017 are shown in page No. 62.

#### **4. Consolidation Policies:**

- 4.1 The Rubber Research Board accounts comprise the consolidation of the activities of the R.R.I. Estates (plantations) managed by the Rubber Research Institute. *i.e.* Dartonfield Group & Kuruwita Estate.
- 4.2 The Rubber Research Institute and estates have a common financial year which ends on 31 December.
- 4.3 The profits and losses of the plantations have been taken in to the Rubber Research Institute surplus/deficit account and reflected in the balance sheet.
- 4.4 The project Accounts have not been consolidated with the Rubber Research Institute Accounts, since they are separate entities. However, the detail information of the projects have been shown separately and it has been reflected in the financial statements.

#### **5. Non-Current Assets:**

##### **5.1 Lands**

The Rubber Research Institute of Sri Lanka has ownership of all the lands except Kumarawatta, Monaragala and Narampola (Alawwa).

##### **5.2 Substation at Narampola (Alawwa) Kumarawatta (Monaragala)**

###### **(a) Narampola (Alawwa)**

The extent of this land is 106 Acres 02 Roods & 31 perches. This land was taken over on 14.12.2004 under MOU on a Rental agreement.

###### **(b) The extent of the land is 50 acres and this was taken over from the JEDB on 19 September 2006 under MOU on 30 years Lease agreement.**

###### **(c) The cabinet approval has been obtained to acquire these Lands and the ownership will be transferred by the Ministry of Plantation Industries (MPI) to RRB after completion of legal requirements with Land Reform Commission (LRC) and Janatha Estate Development Board (JEDB). Therefore the provision for the payment of rental has been transferred as the prior year adjustment Account.**

###### **(d) Profit and Loss - Narampola (Alawwa) & Kumarawatta (Monaragala) Substations**

(i) Narampola substation is established for the purpose of research and extension activities and it is still in developing stage.

(ii) Kumarawatta (Monaragala) Substation has been established for Research and extension activities related to non-traditional Rubber growing areas including Northern and Eastern Provisions. RRI can't expect a profit from the substation as it is a small land for research activities and cultivation.

## **6. Work in progress and goods in transits**

The amounts of Rs.14,433,676.90 and Rs.38,031,023.17 are shown as Work in Progress and Goods in transit for the year 2017 respectively.

## **7. Current Assets**

### **7.1 Debtors & Other Receipts**

7.1.1 The amount of Rs.**6,634,929.37** has been shown as Surety Bond Debtors in the balance sheet of 2017.

7.1.2 Other debtors amounting to Rs.**1,286,278.99** is also transferred to clearance accounts for the purpose of clearance.

## **8. Liabilities**

### **8.1 Contingency Liability**

The contingency liabilities balance as at 31.12.2017 is Rs.**6,634,929.37** which has made up as follows.

Mr. H.H. Talgaswatta	-	38,402.56
Mr. S.M.C.E. Silva	-	1,635,005.85
Mr. Nalinda P Wickramasinghe	-	10,643.54
Mrs. G D D Galpayage	-	3,125,222.87
Mr. B.P. Weerathna	-	<u>1,825,654.55</u>
Total		<u><b>6,634,929.37</b></u>

This amount will be keeping as a note to the balance sheet. If some defaulters will settle the bonded amount in the future it will be taken as sundry income.

### **8.2 EPF, ETF and Gratuity since 2006 to 2011**

The liability of Rs.39,583,815.83 for the payment of EPF, ETF and Gratuity since 2006 to 2011 and Rs.2,300,347.68 has been settled against the courts cases in 2016. Balance has settled in the year 2017.

## **9. Research & Development Expenditure**

Research and development expenditure have been charged to departmental expenditure for the review period.

## **10. New planting/replanting/crop diversification expenditure**

The above categories of expenditure have been capitalized in the accounts and depreciation will be made on maturity.

## **11. Categorizing Expenditure against Budget Format**

Laboratory Working expenses and Field Working expenses have been shown under Research and Development Expenditure in the Statement of Financial



Performance. In the Budget Format, Laboratory working expenses and Field working expenses have been shown under Supplies and services respectively.

Other Operating Expenses are the value of services rendered from the estates (Dartonfield and Kuruwita) to the Rubber Research Institute except Rent for Narampola and Kumarawatta. These expenses are charged to the Rubber Research Institute from the Monthly accounts of Dartonfield and Kuruwita Estates. Labour Charges related to Institute activities have been charged to the relevant department expenditure votes.

**List of Cases as at 31/12/2017**

	<b>Case No.</b>	<b>Court/Institution</b>	<b>Applicant</b>
01.	KT/517/16	Labour Court, Kalutara	Mr LPKW Waliwatta
02.	SCFR/139/2016	High Court, Colombo	Mrs P Perera
03.	CA Writ No 17/17	High Court, Colombo	Dr WMG Senevirathne
04.	6R/7552/17	Labour Court, Ratnapura	Mrs RPS Malkanthi

**RUBBER RESEARCH BOARD OF SRI LANKA**  
**NOTES TO THE STATEMENT OF FINANCIAL POSITION AS AT 31ST DECEMBER 2017**

**NOTE 01 - LAND & BUILDINGS**

ASSETS	Cost as at 01.01.2017 Rs.	Additional during the year 2017 Rs.	Vehicles Sales Rubber Came into Tapping Rs.	Total as at 31/12/2017 Rs.	Accumulative Depreciation as at 31.12.2017 Rs.	Depreciation for the year 2017 Rs.	Accumulated Depreciation as at 31/12/2017 Rs.	Written down value as at 31/12/2017 Rs.	
Road Development Df.	7,181,268.74	3,323,381.76		10,504,650.50	-		-	10,504,650.50	
Land - Df.	1,010,704.74			1,010,704.74	-		-	1,010,704.74	
- N'kele	357,805.89			357,805.89	-		-	357,805.89	
- Galewatta	1,865,476.48			1,865,476.48	-		-	1,865,476.48	
- Kuruwita	732,681.96			732,681.96	-		-	732,681.96	
- Rathmalana	270,760.81			270,760.81	-		-	270,760.81	
Capital Ex. Land productivity improvement in existing rubber cultivation	-			-				-	
Note 26	-			-				-	
Lease Land - Alawwa (55 years lease)	662,365.75			662,365.75	-		-	662,365.75	
- Monaragala (99 years lease)	106,650.00			106,650.00	-		-	106,650.00	
Buildings - Df. H.Q	43,486,361.14	7,785,740.24		51,272,101.38	8,219,064.82	881,682.41	9,100,747.23	42,171,354.15	
- Auditorium	33,848,323.04			33,848,323.04	3,426,601.44	760,543.04	4,187,144.48	29,661,178.56	
- Df. Estate	3,832,426.98	154,318.18		3,986,745.16	953,647.30	71,969.49	1,025,616.79	2,961,128.37	
- N'kele	3,559,630.44	622,352.00		4,181,982.44	726,862.74	70,819.19	797,681.93	3,384,300.51	
- Galewatta	713,605.29			713,605.29	144,418.89	14,229.66	158,648.55	554,956.74	
- Kuruwita	5,859,625.53	90,808.51		5,950,434.04	912,132.25	123,687.33	1,035,819.58	4,914,614.46	
- Rathmalana	18,692,264.84	262,566.65		18,954,831.49	4,934,563.86	343,942.52	5,278,506.38	13,676,325.11	
- Alawwa	1,302,848.78			1,302,848.78	248,899.90	26,348.72	275,248.62	1,027,600.16	
- Monaragala	14,897,068.52			14,897,068.52	2,793,932.89	302,578.39	3,096,511.28	11,800,557.24	
Upgrading telecommunication	2,690,915.18	806,915.43		3,497,830.61		67,272.88	67,272.88	3,430,557.73	
<b>Intangible Assets</b>									129,093,669.15
<b>Accounting Software Df.</b>	1,110,000.00	1,019,978.77		2,129,978.77	180,500.00	185,900.00	366,400.00	1,763,578.77	1,763,578.77
<b>Infrastructure, Plant and equipment</b>									
Machinery & Tools - Df.	668,244.54	384,516.36		1,052,760.90	318,756.32	43,686.03	362,442.35	690,318.55	
- N'kele	223,735.00			223,735.00	59,021.02	20,589.25	79,610.27	144,124.73	
- Df. Estate	914,886.13			914,886.13	600,232.78	39,331.67	639,564.45	275,321.68	
- Kuruwita	864,858.50	37,611.00		902,469.50	55,142.40	101,214.51	156,356.91	746,112.59	
- Rathmalana	2,697,390.00	181,295.00		2,878,685.00	1,933,726.33	95,457.96	2,029,184.29	849,500.71	
- Alawwa	13,045.50			13,045.50	7,429.84	701.96	8,131.80	4,913.70	
Laboratory Equipments - Df.	75,820,924.10	22,086,166.04		97,907,090.14	-		-	-	
- Rathmalana	93,448,750.63	15,932,005.78		109,380,756.41	118,538,486.10	11,852,398.32	130,390,884.42	85,427,765.11	
- N'kele	8,530,802.98			8,530,802.98	-		-	-	
Audio Visual Equipment	487,001.95	570,985.14		1,057,987.09	97,400.39	77,920.31	175,320.70	882,666.39	
Effluent Treatment Plant	9,422,910.68			9,422,910.68	955,180.43	338,709.21	1,293,889.64	8,129,021.04	
Motor vehicles - H.Q	94,300,665.17	16,549.99		94,317,215.16	63,724,704.63	6,115,192.11	69,839,896.74	24,477,318.42	
- Df. Estate	1,443,598.00	1,239,516.10		2,683,114.10	1,259,037.84	36,912.03	1,295,949.87	1,387,164.23	
- Kuruwita	365,960.00			365,960.00	301,375.95	12,916.81	314,292.76	51,667.24	
Power & Water Supply - Df.	1,774,729.99	668,300.00		2,443,029.99	651,640.62	112,308.94	763,949.56	1,679,080.43	

ASSETS	Cost as at 01.01.2017 Rs.	Additional during the year 2017 Rs.	Vehicles Sales Rubber Came into Tapping Rs.	Total as at 31/12/2017 Rs.	Accumulative Depreciation as at 31.12.2017 Rs.	Depreciation for the year 2017 Rs.	Accumulated Depreciation as at 31/12/2017 Rs.	Written down value as at 31/12/2017 Rs.	
- N'kele	29,995.00	49,777.43		79,772.43	21,413.06	858.19	22,271.25	57,501.18	
- Kuruwita	228,831.39			228,831.39	103,772.92	12,505.85	116,278.77	112,552.62	
- Rathmalana	421,808.00	29,000.00		450,808.00	199,610.87	22,219.71	221,830.58	228,977.42	
- Monaragala	1,695,132.00			1,695,132.00	965,433.26	72,969.87	1,038,403.13	656,728.87	
- Alawwa	90,685.00			90,685.00	51,648.09	3,903.69	55,551.78	35,133.22	
Furniture & Fixtures & Office Equipment -D	30,546,804.39	1,214,845.81		31,761,650.20	18,846,354.38	2,340,090.00	21,186,444.38	10,575,205.82	
- N'kele	1,342,716.41			1,342,716.41	1,176,514.64	33,240.35	1,209,754.99	132,961.42	
- Kuruwita	460,080.01			460,080.01	324,516.08	27,112.79	351,628.87	108,451.14	
- Rathmalana	8,828,182.81	1,641,484.98		10,469,667.79	5,251,014.61	715,433.64	5,966,448.25	4,503,219.54	
- Rathmalana	310,838.89			310,838.89	220,029.75	18,161.83	238,191.58	72,647.31	
- Df. Estate	578,824.61	3,435,600.69		4,014,425.30	498,662.60	16,032.40	514,695.00	3,499,730.30	
- Monaragala	1,230,151.63			1,230,151.63	887,141.35	68,602.06	955,743.41	274,408.22	
Others Assets - Df. H.Q	7,796,461.28	790,542.66		8,587,003.94	-		-		
- Df. Estate	888,552.04	2,530.00		891,082.04	-		-		
- Rathmalana	1,368,912.69	470,242.79		1,839,155.48	-		-		
- N'kele	163,144.00	3,991.50		167,135.50	4,569,345.64	849,035.58	5,418,381.22	9,659,888.71	
- Kuruwita	676,006.16	44,814.00		720,820.16	-		-		
- Alawwa	181,360.00			181,360.00	-		-		
- Monaragala	1,985,265.31	706,447.50		2,691,712.81	-		-		
Library Periodicals Journals & Sub etc.	8,890,177.39	36,523.52		8,926,700.91	6,690,511.43	439,933.19	7,130,444.62	1,796,256.29	
Rubber Replanting Df & K'wita	42,232,923.70			42,232,923.70	-	2,942,992.10	2,942,992.10	39,289,931.60	
Rubber in bearing Df & k'wita	20,820,184.41	2,942,992.10		23,763,176.51		1,041,009.22	1,041,009.22	22,722,167.29	
Tea Replanting K'wita	4,341,847.94			4,341,847.94		217,092.40	217,092.40	4,124,755.54	
Replanting Cinnamon K'wita	596,387.23			596,387.23		29,819.37	29,819.37	566,567.86	
Replanting Pepper	106,848.01			106,848.01		-	-	106,848.01	
Earth Slip Project	139,543.30			139,543.30	49,605.93	3,597.49	53,203.42	86,339.88	
Documentary film	3,723.33			3,723.33	3,484.52	29.85	3,514.37	208.96	
				-			-	-	223,355,456.01
<b>Total</b>	<b>569,113,674.21</b>	<b>66,551,799.93</b>	<b>-</b>	<b>635,665,474.14</b>	<b>250,901,817.87</b>	<b>30,550,952.34</b>	<b>281,452,770.21</b>	<b>354,212,703.93</b>	<b>354,212,703.93</b>
2017.01.01 Accumulated Depreciation	=	250,901,817.87			2017 Total Depreciation	=	30,550,952.34		
2017 year Depreciation	=	26,320,039.25			2017 Replanting Depreciation	=	4,230,913.09		
					Transfer to the Estate A/C				
		<b>Rs. 277,221,857.12</b>					<b>Rs. 26,320,039.25</b>		

**RUBBER RESEARCH BOARD OF SRI LANKA**  
**NOTES TO THE ACCOUNTS FOR THE YEAR ENDED 31/12/2017**

**NOTE (02 ) OTHER FINANCIAL ASSETS**

**NOTE 2B -I KURUWITA**

	Rs. 2017	Rs. 2016
Tea in Bearing	-	60,641.22
Tea in Bearing	-	243,062.49
Tea Nursery	-	14,995.99
Young Budding Nursery 2013	-	225,412.33
2007 Bud Wood Nursery	18,039.70	5,024.85
Young Budding Nursery 2013/2014	-	165,215.92
Banana Trail	-	47,548.48
Cinnamon Bearing A/c 4.95 ha	-	87,112.10
Bud wood Nursery 2008	11,539.90	3,679.00
Bud Wood Nursery 2011	36,795.39	14,284.99
2014 Young Bud wood Nursery	29,208.23	29,208.23
Cinnamon Bearing 3.75ha	-	-
Cinnamon Bearing 1.00ha	-	27,642.23
	-	-
<b>Sub Total</b>	<b>95,583.22</b>	<b>923,827.83</b>

**NOTE 2B -II DARTONFIELD ESTATE**

	Rs. 2017	Rs. 2016
2013/2014 Young Budding Nursery NK	183,049.61	183,049.61
G/W Young Budding Nursery 2014/2015	772,356.04	772,356.04
Project Land & Land Improvement	-	24,475.00
Cinnamon Area GW	-	6,385.00
Budwood Nursery	111,250.20	17,972.50
Field 1978 GW Division	-	176,948.24
<b>Sub Total</b>	<b>1,066,655.85</b>	<b>1,181,186.39</b>
<b>Grand Total</b>	<b>1,162,239.07</b>	<b>2,105,014.22</b>

RS

**RUBBER RESEARCH BOARD OF SRI LANKA**  
**NOTES TO THE STATEMENT OF FINANCIAL POSITION AS AT 31ST DECEMBER 2017**

**Note 03**

**OTHER CURRENT ASSETS**

		<b>RRI Rs</b>		<b>K'wita Estate Rs</b>		<b>Df. Estate Rs</b>		<b>Total Rs</b>	
		<u>2017</u>	<u>2016</u>	<u>2017</u>	<u>2016</u>	<u>2017</u>	<u>2016</u>	<u>2017</u>	<u>2016</u>
Deposits	Schedule 04	421,493.91	421,634.41					421,493.91	421,634.41
Other Debtors	Schedule 05	-	1,286,278.99					-	1,286,278.99
General Debtors	2,664,769.79							-	
Less : Provision for bond de (Schedule 06)	-	2,664,769.79	17,699,620.87					2,664,769.79	17,699,620.87
Debtors		2,823,950.05	7,579,377.40					2,823,950.05	7,579,377.40
Loan Receivable		2,467,550.58	2,411,788.51					2,467,550.58	2,411,788.51
Trade & Other Receivables	Schedule 07			273,423.14	258,863.79			273,423.14	258,863.79
Trade & Other Receivables	Schedule 07					4,255,126.89	2,435,272.55	4,255,126.89	2,435,272.55
Good In Transite A/C		38,031,023.17						38,031,023.17	
Debtor's Clearance A/C		23,523,953.58						23,523,953.58	
								-	
		<b>69,932,741.08</b>	<b>29,398,700.18</b>	<b>273,423.14</b>	<b>258,863.79</b>	<b>4,255,126.89</b>	<b>2,435,272.55</b>	<b>74,461,291.11</b>	<b>32,092,836.52</b>

**RUBBER RESEARCH BOARD OF SRI LANKA**  
**NOTES TO THE STATEMENT OF FINANCIAL POSITION AS AT 31ST DECEMBER 2017**

**Note 04**

**INVENTORIES/STOCKS**

		<b>2017 Rs.</b>	<b>2016 Rs.</b>
RRI	Schedule 01	17,205,008.04	17,864,367.22
K'wita Estate	Schedule 02	164,571.00	385,022.99
Df Estate	Schedule 03	958,520.52	319,205.30
	<b>Rs</b>	<b>18,328,099.56</b>	<b>18,568,595.51</b>

**RUBBER RESEARCH BOARD OF SRI LANKA**  
**NOTES TO THE STATEMENT OF FINANCIAL POSITION AS AT 31ST DECEMBER 2017**

**Note - 04 A**

**WORKING PROGRESS**

	<b>2017 Rs.</b>	<b>2016 Rs.</b>
Renovation of Administration Building	1,956,062.25	-
Renovation of Accounts Building	1,920,474.12	-
Installation of Drying Tower	1,161,152.11	-
Renovation of Plant Science Dept.	498,466.25	-
Renovation of Dir, AD, & Open area	2,274,806.37	-
Installation of A/C units	1,384,650.00	-
Renovation of Stores	3,160,556.30	-
Renovation of Timber Stores	2,077,509.50	-
<b>Sub Total</b>	<b>14,433,676.90</b>	<b>-</b>

## RUBBER RESEARCH BOARD OF SRI LANKA

NOTES TO THE STATEMENT OF FINANCIAL POSITION AS AT 31ST DECEMBER 2017

### NOTE 05 - RECEIVABLES

	2017	2016
	Rs.	Rs.
RDD/ASD/RRI Control A/C.	2,032,605.90	516,829.86
Festival Advance	83,966.70	82,716.70
Travelling Advance	42,000.00	45,000.00
A.S.D.Building Complex	5,214,500.00	5,214,500.00
Staff Salary Advance	0.00	1,350.00
RRI Departments - Sundry	0.00	1,200.00
Graduate Trainees Reimbursable	0.00	627,983.56
Graduate Payment 2014	0.00	1,499,345.85
Security Deposits	32,150.00	32,150.00
RDD/ Nurseries RRI Main Control A/C	0.00	98,910.15
E T F	37,692.08	46,621.04
Insurance	22,369.28	22,369.28
Claims From Insurance Corporation	0.00	0.00
Pre Payments T.Premaratne,Suranga Motors Ampara	150,000.00	150,000.00
NIPM	-	71,349.88
Graduate Trainees Payment	-	84,442.84
Cheques Purchase Advance	-	1,351,857.34
Supplier Advance A/C	4,871,382.39	3,842,506.55
<b>Total</b>	<b>12,486,666.35</b>	<b>13,689,133.05</b>

# **RUBBER RESEARCH BOARD OF SRI LANKA**

## **NOTES TO THE STATEMENT OF FINANCIAL POSITION AS AT 31ST DECEMBER 2017**

### **Note - 06**

### **INVESTMENT**

	<b>2017</b>	<b>2016</b>
	<b>Rs.</b>	<b>Rs.</b>
Bank Of Ceylon Agalawatta C/29 200835	200,000.00	200,000.00
National Savings Bank-City Branch A/C No.1-0002-04-5806-06	332,107.10	319,115.24
National Savings Bank-Matugama FD No.2-0045-01-58658	1,378.63	1,253.33
<b>Total</b>	<b>533,485.73</b>	<b>520,368.57</b>

# **RUBBER RESEARCH BOARD OF SRI LANKA**

## **NOTES TO THE STATEMENT OF FINANCIAL POSITION AS AT 31ST DECEMBER 2017**

### **Note -07 CASH AT BANK AND IN HAND**

	<b>Cash at Bank</b>	<b>Cash in Hand</b>	<b>2017 TOTAL</b>	<b>2016 TOTAL</b>
			<b>Rs.</b>	<b>Rs.</b>
Bank of Ceylon - Cor.Branch A/C No.1837	64,279,142.23	-	64,279,142.23	89,004,245.57
		-	-	-
Bank of Ceylon - Agalawatta A/C No.335976	37,197,282.04	-	37,197,282.04	803,907.53
		-	-	-
Bank of Ceylon - Agalawatta	5,442,071.74	-	5,442,071.74	5,046,772.20
		-	-	-
Dartonfield Estate A/C No.335978	7,701,618.36	866.10	7,702,484.46	921,958.98
		-	-	-
Kuruwita Estate A/C No.4320540	9,547,587.93	91.82	9,547,679.75	3,626,383.11
		-	-	-
Insurance cash in Transit	27,094.09	-	27,094.09	-
<b>Total</b>	<b>124,194,796.39</b>	<b>957.92</b>	<b>124,195,754.31</b>	<b>99,403,267.39</b>



**RUBBER RESEARCH BOARD OF SRI LANKA**  
**NOTES TO THE STATEMENT OF FINANCIAL POSITION AS AT 31ST DECEMBER 2017**

**Note 08**

**Payables**

		<b>RRI</b>		<b>K'wita Estate</b>		<b>Df. Estate</b>		<b>Total</b>	
		Rs.		Rs.		Rs.		Rs.	
		<u>2017</u>	<u>2016</u>	<u>2017</u>	<u>2016</u>	<u>2017</u>	<u>2016</u>	<u>2017</u>	<u>2016</u>
Creditors	Schedule 08	20,359,279.62	18,360,326.57					20,359,279.62	18,360,326.57
Payables	Schedule 08, 09, 10	831,977.12	10,635,453.35	2,639,858.86 (Schedule 09)	2,830,959.94 (Schedule 09)	11,806,150.65 (Schedule 10)	13,619,905.65 (Schedule 10)	15,277,986.63	27,086,318.94
Accrued Expen:	Schedule 11	40,047,127.66	20,100,372.28			214,021.60	92,016.98	40,261,149.26	20,192,389.26
<b>Total</b>	<b>Rs</b>	<b>61,238,384.40</b>	<b>49,096,152.20</b>	<b>2,639,858.86</b>	<b>2,830,959.94</b>	<b>12,020,172.25</b>	<b>13,711,922.63</b>	<b>75,898,415.51</b>	<b>65,639,034.77</b>

## RUBBER RESEARCH BOARD OF SRI LANKA

NOTES TO THE STATEMENT OF FINANCIAL POSITION AS AT 31ST DECEMBER 2017

### PROVISION FOR AUDIT FEE

**Note - 09**

	2017 Rs.	2016 Rs.
Beyond 2014.01.01	-	1,399,460.99
Provision for 2017	1,100,000.00	479,120.40
<b>Total</b>	<b>1,100,000.00</b>	<b>1,878,581.39</b>

### PROVISION FOR GRATUITY

**Note - 10**

	2017 Rs.	2016 Rs.
RRI	100,893,773.50	87,715,525.50
Kuruwita	5,789,000.00	5,999,000.00
Dartonfield	16,783,200.00	17,516,800.00
Provision for Gratuity Polgahawela	858,480.00	777,700.00
Provision for Gratuity Monaragala	1,185,520.00	731,500.00
<b>Total</b>	<b>125,509,973.50</b>	<b>112,740,525.50</b>

# **RUBBER RESEARCH BOARD OF SRI LANKA**

## **NOTES TO THE STATEMENT OF FINANCIAL POSITION AS AT 31ST DECEMBER 2017**

### **Note - 11**

	<b>Rs.</b>
Accumulated Fund	45,044,234.46
Other Capital Grants	Schedule 12 178,764,842.18
Treasury Grants Capital	569,717,607.34
Treasury Grants Cess	79,828,035.40
Plantation Crop Development Fund	6,300,000.00
<b>Total</b>	<b>879,654,719.38</b>

### **Note 12**

Deficit A/C Balance B/F 01.01.2017	(445,637,339.60)
Prior Year adjustment	8,670,541.99
	(436,966,797.61)
Deficit 2017 year	(45,382,393.82)
<b>Total</b>	<b>(482,349,191.43)</b>

**RUBBER RESEARCH BOARD OF SRI LANKA**

**NOTES TO THE STATEMENT OF FINANCIAL PERFORMANCE AS AT 31ST DECEMBER 2017**

<b>Note-13 - OTHER INCOME - 2017</b>	<b>NON RESEARCH</b>	<b>RESEARCH</b>	<b>TOTAL RS.</b>	
			<b>2017 Rs.</b>	<b>2016 Rs.</b>
Interest On Institute Loans	126,109.41		126,109.41	163,202.75
Sales Of Publication	178,760.00		178,760.00	149,205.00
Bus fare Recoveries	282,291.50		282,291.50	314,148.25
Sundry Receipts	2,560,149.80		2,560,149.80	4,809,679.67
External heavy vehicles entering to RRI Premises	-		-	2,800.00
Effluent Treatment- B/C Dept.		189,150.00	189,150.00	25,450.00
Testing of Rubber - Polymer		-	-	-
Testing of Rubber - Rubber Technology		204,540.00	204,540.00	240,706.00
Testing of Rubber - RRP Dept.		541,650.00	541,650.00	620,775.00
Kuruwita Guest House Occupational Charges	4,287.42		4,287.42	16,650.00
Sale of Rejected Items	36,485.00		36,485.00	55,600.00
Soil & Foliar analysis Fee		308,652.10	308,652.10	-
Interest on Investments	429,321.54		429,321.54	31,329.38
Sale of Tapping Knives		247,730.00	247,730.00	1,600,240.00
Use of RRI Vehicles for Projects		30,437.50	30,437.50	121,980.07
Profit on Training Programmes		555,926.40	555,926.40	832,485.70
Guest House Income	187,300.00		187,300.00	-
Soil Foliar Survey		705,296.30	705,296.30	-
Waste Rubber of RRI Depts. Sold		-	-	-
Tapping Panel Making plants sale		35,675.00	35,675.00	40,025.00
Testing T.S.R. Samples		1,921,400.00	1,921,400.00	1,107,850.00
Testing and Analytical Fees Polymer Chemistry		803,600.00	803,600.00	1,018,299.52
Insurance claims Received Factory Fire	-		-	-
Auditorium Income	-		-	6,000.00
RRI Internal Timber Used	-		-	-
Sale of Bud wood Stumps	500.00		500.00	-
Claims Received from Insurance Corporation	-		-	11,727.16
Registration Suppliers	39,250.00		39,250.00	37,450.00
Testing fee Plant Pathology	-		-	46,500.00
Testing Fees - Plant Patho		19,500.00	19,500.00	
Testing Fees - Plant Science		13,250.00	13,250.00	
<b>Total</b>	<b>3,844,454.67</b>	<b>5,576,807.30</b>	<b>9,421,261.97</b>	<b>11,252,103.50</b>

**RUBBER RESEARCH BOARD OF SRI LANKA**  
**NOTES TO THE STATEMENT OF FINANCIAL PERFORMANCE AS AT 31ST DECEMBER 2017**

**Note -14 PERSONAL EMOLUMENTS      EXPENDITURE STATEMENT - 2017**

Research Departments	Emoluments	P.F.	E.T.F.	Medical Fund	Over Time	House Rent	Transport Allowance	Fuel Allowance	Total Rs.
Plant Science	14,589,213.48	1,940,405.27	388,081.09	2,435,194.44	267,877.14	77,207.69	600,000.00	168,480.00	20,466,459.11
Plant Pathology	7,375,116.27	937,640.86	187,528.17	1,133,890.27	314,675.71	35,870.88	441,666.67	124,020.00	10,550,408.83
Genetics & Plant Breeding	14,955,197.58	1,986,781.18	385,491.53	2,258,081.00	293,707.70	62,927.75	600,000.00	168,480.00	20,710,666.74
Soils & Plant Nutrition	10,297,840.74	1,300,241.12	260,048.24	1,514,869.52	162,207.18	52,568.27	-	-	13,587,775.07
Raw Rubber & Chemical Analysis	5,926,874.44	893,047.71	155,969.21	808,249.14	52,824.08	44,501.69	-	-	7,881,466.27
Bio-Chemistry & Physiology	4,603,001.34	616,314.19	113,844.46	702,683.41	241,717.85	19,118.25	-	-	6,296,679.50
Adaptive Research Unit	6,296,519.87	1,032,865.86	161,124.65	1,052,356.19	200,842.87	38,571.60	641,666.67	180,180.00	9,604,127.71
Rubber Technology	7,712,643.90	1,116,934.01	204,843.19	1,102,569.46	79,872.54	61,468.27	600,000.00	168,480.00	11,046,811.37
RRPD & CE Dept	7,811,484.53	1,002,207.06	200,441.41	1,145,215.07	178,867.01	66,571.52	-	-	10,404,786.60
Bio Metry	3,497,044.50	462,737.44	92,547.49	397,391.60	52,224.14	22,560.00	600,000.00	168,480.00	5,292,985.17
RRI New Advisory Services Dept	20,634,197.01	3,166,044.95	560,756.82	2,709,866.65	3,585.81	363,287.38	600,000.00	136,800.00	28,174,538.62
Training Centre	986,816.30	124,360.12	24,872.03	178,386.93	12,108.82	6,017.14	-	-	1,332,561.34
Polymer Chemistry	4,918,058.37	598,030.92	119,606.18	871,320.41	101,667.35	29,510.64	-	-	6,638,193.87
Agriculture Economics	1,324,733.18	165,971.81	33,194.36	91,110.50	2,640.00				1,617,649.85
<b>SUB TOTAL</b>	<b>110,928,741.51</b>	<b>15,343,582.50</b>	<b>2,888,348.83</b>	<b>16,401,184.59</b>	<b>1,964,818.20</b>	<b>880,181.08</b>	<b>4,083,333.34</b>	<b>1,114,920.00</b>	<b>153,605,110.05</b>
<b>Other Departments</b>									
Library & Publication Unit	2,420,430.06	420,638.32	65,427.65	530,059.01	184,198.55	15,840.00	-	-	3,636,593.59
Director's Office	6,663,604.36	962,494.55	192,498.90	751,275.94	3,755.24	17,897.42	907,367.90	600,000.00	10,098,894.31
Internal Audit	2,233,214.75	278,354.92	55,670.99	392,116.45	12,381.15	14,280.00	-	-	2,986,018.26
Board Office	9,569,112.99	1,019,194.75	203,838.95	1,282,275.19	662,976.16	65,021.92	-	-	12,802,419.96
Administration	22,350,479.00	2,702,285.29	3,343,516.96	3,814,955.59	668,913.80	124,149.33	350,000.00	98,280.00	33,452,579.97
Finance (Accounts)	11,557,648.47	1,592,916.32	292,377.36	2,080,910.23	359,641.57	49,608.59	600,000.00	168,480.00	16,701,582.54
Stores	1,524,171.41	180,804.79	36,160.97	292,748.03	49,038.13	13,200.00	-	-	2,096,123.33
Maintenance (Work Section)	30,964,395.12	3,994,456.35	757,540.15	5,481,591.32	2,130,254.01	167,351.01	-	-	43,495,587.96
Electronic Repair Unit	-	-	-	-	670,395.12	-	-	-	670,395.12
<b>SUB TOTAL</b>	<b>87,283,056.16</b>	<b>11,151,145.29</b>	<b>4,947,031.93</b>	<b>14,625,931.76</b>	<b>4,741,553.73</b>	<b>467,348.27</b>	<b>1,857,367.90</b>	<b>866,760.00</b>	<b>125,940,195.04</b>
<b>Grand total</b>	<b>198,211,797.67</b>	<b>26,494,727.79</b>	<b>7,835,380.76</b>	<b>31,027,116.35</b>	<b>6,706,371.93</b>	<b>1,347,529.35</b>	<b>5,940,701.24</b>	<b>1,981,680.00</b>	<b>279,545,305.09</b>
Less : Computer Difference									(89.50)
									<b>279,545,215.59</b>

**RUBBER RESEARCH BOARD OF SRI LANKA**  
**NOTES TO THE STATEMENT OF FINANCIAL PERFORMANCE AS AT 31ST DECEMBER 2017**  
**DARTONFIELD ESTATE EXPENDITURE**

Note 14A

<b>Wages, Salaries &amp; Employee Benefits</b>	<b>2017</b>		<b>2016</b>	
Salaries & Wages etc	6,080,872.91		5,236,308.14	
EPF	3,991,454.90		4,246,658.71	
ETF	997,863.72		960,565.20	
Medical	926,899.33		755,264.22	
L/Wages	14,980,176.58		19,303,646.06	
Holiday pay	1,852,669.10		1,722,855.07	
Attendance Bounds	135,050.00		134,300.00	
<b>Total</b>		<b>28,964,986.54</b>		<b>32,359,597.40</b>
<b>Grants &amp; Other Transfer Payment</b>				
<b>Supplies &amp; Consumables Used</b>				
Tools	49,785.00		16,350.00	
Rain Guard	1,803,372.05		1,125,038.34	
Stimulation	66,578.27		92,318.06	
Tapping Utensils	133,095.00		203,506.50	
Chemicals	349,339.69		475,245.32	
packing Materials	33,685.00		30,982.60	
<b>Total</b>		<b>2,435,855.01</b>		<b>1,943,440.82</b>
<b>Depreciation &amp; Amortization Expenses</b>				
Fixed Assets	222,012.02		285,251.12	
Repenting	973,698.32		1,024,945.60	
<b>Total</b>		<b>1,195,710.34</b>		<b>1,310,196.72</b>
<b>Maintenance of Property, Plant &amp; Equipment</b>				
Supervisory Vehicle	995,197.26		877,182.73	
Stationery & Communication	898,907.62		793,827.19	
Bungalows	520,725.55		490,289.48	
Lines	191,682.67		64,445.81	
Miner Building Up-Keep	95,761.97		51,293.08	
Weeding	2,040,614.88		874,361.25	
Marking	160,730.00		301,075.62	
Tapping Panel Treatment	1,600.00		22,000.00	
Latex ( Transports)	829,798.89		804,383.19	
Power			822,082.20	
Fuel	328,528.43		302,788.64	
Factory Up-Keep	31,236.00		164,320.90	
Machinery Up-keep	31,236.00		28,776.84	
Factory Sundries	36,453.79		21,371.77	
Transport of Produce	147,299.61		79,087.65	
Water Supply	5,699.92		-	
<b>Total</b>		<b>6,315,472.59</b>		<b>5,697,286.35</b>
<b>Other Expenses</b>				
Contingencies	144,439.89		485,230.61	
Levies, Subscription & Visiting			-	
Welfare & Sports	-		77,335.19	
Audit Fee	76,565.66		139,157.88	
Other	160,031.56			
<b>Total</b>		<b>381,037.11</b>		
Other Expenditure Estate	5,476,551.06	<b>5,476,551.06</b>		701,723.68
<b>Finance Costs</b>				
Commission Cash Transport/Insurance	362,647.18		296,269.17	
Bank Charges	2,250.00		6,500.00	
Insurance	162,888.60		157,171.18	
<b>Total</b>		<b>527,785.78</b>		<b>459,940.35</b>
<b>Total Revenue expenditure</b>		<b>45,297,398.43</b>		<b>42,472,185.32</b>

**RUBBER RESEARCH BOARD OF SRI LANKA**  
**NOTES TO THE STATEMENT OF FINANCIAL PERFORMANCE AS AT 31ST DECEMBER 2017**  
**KURUWITA SUB STATION**

**Note 14 B**

**Wages, Salaries & Employee Benefits**

	<b>2017</b>		<b>2016</b>	
	<b>Rs.</b>		<b>Rs.</b>	
Emolument	3,304,418.50		3,141,336.17	
EPF	1,307,066.35		1,636,334.66	
ETF	326,766.59		392,976.32	
Medical	431,076.95		341,789.78	
L/Wages - Tapping/other sundries	10,351,528.68		9,182,037.62	
Overtime pay / Holiday pay	1,064,200.78		940,914.11	
Attendance bonus	56,716.67		55,425.00	
House rent			-	
<b>Total</b>		16,841,774.52		15,690,813.66
<b>Supplies &amp; Consumables Used</b>				
Tools	1,150.00		2,250.00	
Rainguard	733,337.65		561,231.70	
Stimulation	69,699.15		46,150.00	
Tapping Utensils	87,900.00		84,410.93	
Packing Materials	-		8,184.00	
Fuel	-		-	
Packing Materials	7,795.00		-	
Chemical etc	180,600.00		161,698.42	
<b>Total</b>		1,080,481.80		863,925.05
<b>Depreciation</b>				
Fixed Assets	321,385.71		310,225.50	
Replanting	67,310.90		70,853.58	
<b>Total</b>		388,696.61		381,079.08
<b>Maintenance of Property, Plants &amp; Equipment</b>				
Supervisory Vehicle	237,821.39		153,361.04	
Stationery & Communication	153,258.70		136,917.23	
Bungalows	576,179.74		410,077.99	
Lines	157,351.64		105,134.74	
Minor Building upkeep	79,971.37		71,783.59	
Weeding	821,355.56		241,641.15	
Marking	86,418.87		178,346.00	
Tapping panel treatment	21,100.00		3,520.00	
Latex transport	46,937.50		81,700.62	
Fuel	105,065.46		73,117.63	
Factory upkeep	-		5,059.00	
Machinery upkeep	86,419.72		1,100.00	
Factory sundries	34,933.00		69,800.09	
Transport of Produce	47,135.30		4,750.00	
<b>Total</b>		2,453,948.25		1,536,309.08
<b>Other Expenses</b>				
Contingencies	47,212.56		45,084.36	
subscription & Visiting	32,391.00		-	
Welfare	-		16,405.00	
Audit fee	49,674.08		43,194.85	
Legal			12,500.00	
Insurance			60,878.19	
<b>Finance Costs</b>		129,277.64		178,062.40
Legal	13,500.00			
Commission on Cash	127,409.51		110,531.66	
Insurance	63,518.09			
<b>Total</b>		204,427.60		110,531.66
<b>Grand Total</b>		<b>21,098,606.42</b>		<b>18,760,720.93</b>

**RUBBER RESEARCH BOARD OF SRI LANKA**  
**NOTES TO THE STATEMENT OF FINANCIAL PERFORMANCE AS AT 31ST DECEMBER 2017**  
**MONARAGALA SUB STATION**

**Note 14 C**

	<b>2017</b>		<b>2016</b>	
	<b>Rs.</b>		<b>Rs.</b>	
Emolument	3,609,596.03		3,361,566.78	
EPF	502,712.93		443,260.47	
ETF	70,121.63	4,182,430.59	67,172.24	3,871,999.49
Supplies & Other Consumables used	295,758.25		707,705.48	
Other Expenses	631,188.63		141,823.49	
<b>Total</b>	<b>5,109,377.47</b>		<b>4,721,528.46</b>	

**RUBBER RESEARCH BOARD OF SRI LANKA**  
**NOTES TO THE STATEMENT OF FINANCIAL PERFORMANCE AS AT 31ST DECEMBER 2017**  
**POLGAHAWELA SUB STATION**

**Note 14 C**

	<b>2017</b>		<b>2016</b>	
	<b>Rs.</b>		<b>Rs.</b>	
Emolument	2,086,592.00		2,853,747.00	
EPF	318,048.02		424,703.46	
ETF	43,528.51	2,448,168.53	57,914.11	3,336,364.57
Supplies & Other Consumables used	75,571.58		271,023.59	
Other Expenses	398,536.72		103,221.75	
<b>Total</b>	<b>2,922,276.83</b>		<b>3,710,609.91</b>	



**RUBBER RESEARCH BOARD OF SRI LANKA**  
**NOTES TO THE STATEMENT OF FINANCIAL PERFORMANCE AS AT 31ST DECEMBER 2017**

**Note-15 - TRAVELLING**

	<b>2017 Rs.</b>	<b>2016 Rs.</b>
<b>RESEARCH DEPARTMENTS</b>	<b>Travelling &amp; Subsistence</b>	
Plant Science	516,586.20	432,385.25
Plant Pathology	194,413.14	156,526.50
Genetics & Plant Breeding	412,907.82	419,350.68
Soils & Plant Nutrition	229,573.06	172,002.75
Raw Rubber & Chemical Analysis	79,285.00	46,841.70
Bio-Chemistry & Physiology	223,484.50	181,937.50
Adaptive Research Unit	42,010.57	36,739.00
Rubber Technology	99,834.00	90,888.50
RRPD & CE Dept	164,851.00	103,473.75
Bio Metry	57,704.66	38,794.50
Polymer Chemistry	118,489.00	87,420.00
Agriculture Economics	22,000.00	7,935.00
<b>Sub Total</b>	<b>2,161,138.95</b>	<b>1,774,295.13</b>

<b>OTHER DEPARTMENTS</b>	<b>2017 Rs.</b>	<b>2016 Rs.</b>
Library & Publication Unit	6,930.00	22,277.25
Director's Office	94,922.50	87,297.50
Internal Audit	28,328.62	30,512.50
Board Office	400,310.29	358,612.94
Administration	145,933.76	139,661.00
Finance (Accounts)	140,948.34	121,754.00
Stores	35,870.95	33,050.00
Maintenance (Work Section)	1,400,003.78	1,468,376.18
RRI New Advisory Services Dept	1,441,168.19	1,732,492.71
Training Centre	3,603.00	30,884.35
<b>Sub Total</b>	<b>3,698,019.43</b>	<b>4,024,918.43</b>
<b>Grand Total</b>	<b>5,859,158.38</b>	<b>5,799,213.56</b>

**Note -16 - SUPPLIERS AND CONSUMABLES**

	RESEARCH DEPARTMENTS	OTHER EXPENSES
Supplies	100	50
Consumables	200	100
Other	50	20
Total	350	170

	2017 Rs.	2016 Rs.
Plant Science	109,749.37	33,593.20
Plant Pathology	1,053,906.15	954,948.10
Genetics & Plant Breeding	55,574.88	139,420.54
Soils & Plant Nutrition	84,192.13	54,846.84
Raw Rubber & Chemical Analysis	138,480.82	58,597.80
Bio-Chemistry & Physiology	45,659.28	10,117.50
Adaptive Research Unit	34,741.43	93,247.40
Rubber Technology	101,619.71	65,140.28
RRPD & CE Dept	128,332.79	90,299.04
Bio Metry	85,093.21	330,435.37
Polymer Chemistry	45,056.61	34,316.02
Agriculture Economics	9,637.78	12,559.69
<b>SUB TOTAL</b>	<b>1,892,044.16</b>	<b>1,877,521.78</b>

## OTHER DEPARTMENTS

OTHER DEPARTMENTS		
Library & Publication Unit	545,191.60	1,322,253.44
Director's Office	61,044.67	129,706.84
Internal Audit	14,739.37	9,016.14
Board Office	1,155,987.45	1,069,462.12
Administration	348,267.93	218,083.86
Finance (Accounts)	174,777.05	231,722.43
Maintenance (Work Section)	567,117.21	206,910.75
RRI New Advisory Services Dept	621,031.42	521,715.72
Training Centre	345,705.63	193,693.07
Stores	48,013.93	31,516.29
Electronic Repair Unit		
<b>SUB TOTAL</b>	<b>3,881,876.26</b>	<b>3,934,080.66</b>
L.P gas for Bungalows	312,236.00	378,162.00
Fuel & Lubricants	5,395,303.42	5,869,306.52
Stationery and Office Requisites	529,914.67	434,282.96
Medical Expenses	466,404.50	344,584.47
Bud wood Stumps	-	-
Sample survey for rubber productivity	-	-
<b>SUB TOTAL</b>	<b>6,703,858.59</b>	<b>7,026,335.95</b>
<b>GRAND TOTAL</b>	<b>12,477,779.01</b>	<b>12,837,938.39</b>

**RUBBER RESEARCH BOARD OF SRI LANKA**  
**NOTES TO THE STATEMENT OF FINANCIAL PERFORMANCE AS AT 31ST DECEMBER 2017**  
**DEPRECIATION OF NON CURRENT ASSETS**

**Note-17**

<b>CATEGORY OF ASSETS</b>	<b>Percentage</b>	<b>Rs.</b>		
		<b>2017 Rs.</b>	<b>2016 Rs.</b>	<b>Depreciation method</b>
Buildings	2.5%	2,595,800.76	3,087,627.22	Reducing Balance method
Intangible Assets	20%	185,900.00	85,500.00	
Furniture, Fittings & Office Equipment	20%	3,218,673.07	3,101,285.74	"
Power & Water Supply	10%	224,766.26	219,685.13	"
Machinery & Tools	13%	300,981.37	179,254.22	"
Lab Apparatus	20%	11,852,398.32	13,350,784.80	"
Motor Vehicles	20%	6,165,020.95	3,862,526.19	"
Library Books	20%	439,933.19	533,845.24	"
Documentary Film	13%	-	59.70	"
Earth Slip Project	4.00%	3,597.49	3,261.98	"
Other assets	10%	849,035.58	886,883.89	"
Effluent Treatment Plant	4.0%	338,709.21	307,119.75	"
Audio Visual Equipment	20.0%	145,223.04	97,400.39	"
<b>Total</b>		<b>26,320,039.25</b>	<b>25,715,234.24</b>	
<b>Less:</b>				
Dartonfield Estate - Depreciation		(321,385.71)	(285,251.12)	"
Kuruwita Estates - Depreciation		(222,012.02)	(310,225.50)	"
		<b>25,776,641.52</b>	<b>25,119,757.62</b>	
<b>Less: Amortization</b>		-	(2,748,006.48)	
		<b>25,776,641.52</b>	<b>22,371,751.14</b>	

**RUBBER RESEARCH BOARD OF SRI LANKA**

**NOTES TO THE STATEMENT OF FINANCIAL PERFORMANCE AS AT 31ST DECEMBER 2017**

**Note 18 - MAINTENANCE**

	<b>2017</b>	<b>2016</b>
	<b>Rs.</b>	<b>Rs.</b>
Office & General Building Repair & Maintenance	2,311,043.94	1,812,261.25
Maintenance of Auditorium	84,487.45	60,169.04
Bungalows	3,911,893.54	2,634,620.16
Bungalow Premises & Compounds	8,277,575.15	6,010,303.17
Furniture, Fixtures & Fittings	41,595.00	202,970.71
Institute General Building Premises & Compounds	961,286.76	943,673.14
RRI Ratmalana Building Premises Upkeep-Maintenance	66,065.27	76,497.60
Maintenance Tools	580.00	-
Maintenance of Computer	1,548,183.33	1,767,255.73
Computer Network	379,846.81	7,855.00
	103,604.75	

**OPERATIONAL EXPENDITURE VEHICLES**

Servicing of Vehicles	170,865.85	174,910.00
Repairs & Maintenance	4,612,492.81	3,573,358.04
<b>Total</b>	<b>22,469,520.66</b>	<b>17,263,873.84</b>

**RUBBER RESEARCH BOARD OF SRI LANKA**  
**NOTES TO THE STATEMENT OF FINANCIAL PERFORMANCE AS AT 31ST DECEMBER 2017**  
**ADMINISTRATION - GENERAL CHARGES - 2017**

**Note 19**

<b>CONTRACTUAL SERVICES</b>	<b>2017 Rs.</b>	<b>2016 Rs.</b>
Legal Expenses	924,791.24	1,762,624.22
Audit Fees	-	296,767.67
IRRDB Expenses	220,146.52	2,993,914.91
Entertainment Expenses	500,400.50	167,005.50
Environment Protection	-	64.60
Insurance General Covers(Excluding vehicles)	2,011,770.12	757,757.37
Welfare and Recreation	227,413.83	119,962.39
Railway Concessionary Season Tickets	-	570.00
Conference/Seminars	13,800.00	21,500.00
Bank Charges	69,100.00	120,586.00
Security Charges - RRI	1,368,349.70	1,916,400.00
Postage	83,775.00	83,767.65
Telephone	4,998,064.92	3,842,614.44
Advertisements	1,742,562.50	1,624,360.05
Transport & Handling Charges	4,840.00	6,928.48
Sundries & Utility Services	504,917.81	401,339.24
Staff Training & Development	8,267,070.25	3,351,900.41
Fees For Interview Panels	247,736.75	199,148.20
Provident Fund Expenses-RRI Component	33,440.00	57,308.91
Public Relations	7,537.20	7,328.08
Honorarium to Members Attending AFKOM	142,457.00	95,192.00
Police Escort Expenses	-	9,000.00
Customs Duty/ clearing Charges	71,197.00	-
Photo Copier Maintenance	181,072.27	194,684.24
Gratuity for the Year	30,065,225.00	24,227,518.00
Staff Gratuity Polgahawela	150,780.00	273,700.00
Staff Gratuity Monaragala	454,020.00	479,500.00
Power Supply & Maintenance	8,031,196.21	7,689,133.81
Water Supply & Maintenance	1,242,618.18	762,266.42
Upkeep & Maintenance of Guest Houses (DF & KW)	1,122,557.52	627,266.68
Revenue Licenses, Insurance Covers, Fitness fees &	283,762.28	2,734,897.62
External Vehicles Hired	1,143,882.00	248,525.00
Rent & Taxes	105,860.27	228,625.04
Contingencies & General Ex.	-	6,318.00
Inland Revenue Stamp Duty	125,050.00	120,300.00
Sundry Expenses	4,142.00	2,150.00
Stocks Adjustment A/C - DF	879,832.18	-
Stocks Adjustment A/C - RT	670,395.12	-
Staff Disciplinary Inquiry Expences	8,250.00	-
COL Arreas Payment for PF Members	30,522,787.40	-
<b>Total</b>	<b>96,430,800.77</b>	<b>55,430,924.93</b>

## EXPENDITURE -RESEARCH AND DEVELOPMENT

### Note -20 Research Departments

	Laboratory Working	Field Working	Total Rs.	Laboratory Working	Field Working	Total Rs.
	2017			2016		
Plant Science	683,169.63	3,525,978.41	4,209,148.04	26,449.88	1,635,262.08	1,661,711.96
Plant Pathology	2,381,396.11	605,212.07	2,986,608.18	982,557.08	586,691.34	1,569,248.42
Genetics & Plant Breeding	71,949.50	2,038,820.33	2,110,769.83	47,117.96	1,691,220.50	1,738,338.46
Genetics & Plant Breeding- Germplasm Project		5,651,070.97	5,651,070.97		8,499,457.52	8,499,457.52
Soils & Plant Nutrition	515,698.05	1,021,958.35	1,537,656.40	319,583.44	1,081,714.01	1,401,297.45
Raw Rubber & Chemical Analysis	1,350,459.34	0.00	1,350,459.34	160,821.50	500.00	161,321.50
Bio-Chemistry & Physiology	914,201.01	888,842.53	1,803,043.54	557,641.81	324,424.37	882,066.18
Adaptive Research Unit	2,028.40	148,639.78	150,668.18	6,948.56	302,100.76	309,049.32
Rubber Technology	154,992.67	4,700.00	159,692.67	59,248.06	1,020.00	60,268.06
RRPD & CE Dept	662,526.19	53,232.00	715,758.19	839,158.50	4,000.00	843,158.50
Bio Metry	-	426.14	426.14	-	3,850.00	3,850.00
Polymer Chemistry	406,632.75	5,834.89	412,467.64	108,472.79	420.00	108,892.79
Tapping Marking Plates Expenses	-	-	-	-	1,375,750.00	1,375,750.00
Rubber Cultivation in N'Kele	-	-	-	-	41,157.00	41,157.00
Analytical Charges and Other Testing	-	-	-	185,340.00		185,340.00
Sails & Foliar Analysis Fee	-	-	-	543,328.90		543,328.90
Rubber Re-Planting Ex. }	4,989,132.54		4,989,132.54	2,524,184.62		2,524,184.62
	254,663.30		254,663.30	117,150.32		117,150.32
	295.00		295.00	6,285.86		6,285.86
Land & Land Improvment	10,240.00		10,240.00	30,280.00		30,280.00
Soils and Foliar Survey	-		-	739,763.55		739,763.55
Land & Land Improvment	45,910.00		45,910.00	16,125.00		16,125.00
Land & Land Improvment	850,964.75		850,964.75	36,000.00		36,000.00
<b>TOTAL</b>	<b>13,294,259.24</b>	<b>13,944,715.47</b>	<b>27,238,974.71</b>	<b>7,306,457.83</b>	<b>15,547,567.58</b>	<b>22,854,025.41</b>
Negenahira Navodaya	-	623,346.30	623,346.30	-	1,151,804.79	1,151,804.79
Northern Province Expenses	-	374,007.02	374,007.02	-	893,831.53	893,831.53
Pest & Disease Management Project			-		1,120,071.19	1,120,071.19
			-		675,444.95	675,444.95
	<b>13,294,259.24</b>	<b>14,942,068.79</b>	<b>28,236,328.03</b>	<b>7,306,457.83</b>	<b>19,388,720.04</b>	<b>26,695,177.87</b>

**RUBBER RESEARCH BOARD OF SRI LANKA**

**NOTES TO THE STATEMENT OF FINANCIAL PERFORMANCE AS AT 31ST DECEMBER 2017**

**Note 21      OTHER OPERATING EXPENSES**

	<b>2017</b>	<b>2016</b>
	<b>Rs.</b>	<b>Rs.</b>
Rent for Narampola & Kumarawatta	-	-
Telephone Messenger	-	-
Medical Centre Labor	-	1,017,805.00
Sanitation	638,339.43	497,072.47
Roads, Fences & Boundaries	1,789,323.66	1,528,935.11
Watchmen & Gate Watchers	4,067,142.08	2,728,447.23
<b>Total</b>	<b>6,494,805.17</b>	<b>5,772,259.81</b>

**RUBBER RESEARCH BOARD OF SRI LANKA**  
**NOTES TO THE STATEMENT OF FINANCIAL PERFORMANCE AS AT 31ST DECEMBER 2017**  
**DARTONFIELD GROUP ESTATE WORKING ACCOUNT FOR THE YEAR ENDED 2017**

**Note 22**

		<b>2017 Rs.</b>	<b>2016 Rs.</b>
Sales of Rubber Kg 176,136		51,792,546.85	36,355,848.17
2017.01.01 Stock kg 13007		5,449,980.00	4,305,000.00
		57,242,526.85	40,660,848.17
2017.12.31 Stock (kg 18,688)		(4,305,000.00)	3,883,699.00
Gross Profit		52,937,526.85	36,777,149.17
<b>Add :-</b>			
Sundry Receipts		1,885,612.93	408,525.00
Rubber Replant Subsidy		380,770.74	608,895.31
Tea Green Leaf Sale		886,748.11	538,819.39
Rain Guard Subsidy		1,684,115.00	2,746,120.00
		4,837,246.78	4,302,359.70
		57,774,773.63	41,079,508.87
<b>Less :</b>			
<b>Expenses</b>			
Wages, Salaries and employee benefits (Note 14A)		28,964,986.54	32,359,597.40
Supplies and Other consumables used (Note 14A)		2,435,855.01	1,943,440.82
Depreciation and amortization expenses (Note 14A)		1,195,710.34	1,310,196.72
Maintenance of property, plant and equipment (Note 14A)		6,315,472.59	5,697,286.35
Other expenses (Note 14A)		381,037.11	701,723.68
Finance Costs (Note 14A)		527,785.78	459,940.35
Other Expenditure Estate (Note 14A)		5,476,551.06	45,297,398.43
		45,297,398.43	42,472,185.32
<b>Other Expenditure Projects</b>			
Tea Green Leaf Expenditure		866,685.88	626,029.11
Cinnamon Expenditure		330,726.65	-
1980/93 Rubber Field Ex.		1,197,412.53	626,029.11
Surplus for the period		Rs. 11,279,962.67	(2,018,705.56)



**RUBBER RESEARCH BOARD OF SRI LANKA**  
**NOTES TO THE STATEMENT OF FINANCIAL PERFORMANCE AS AT 31ST DECEMBER 2017**  
**Kuruwita Estate Working Account for the Year Ended 2017**

**Note 23**

	<b>2017</b>	<b>2016</b>
	<b>Rs.</b>	<b>Rs.</b>
<b>Revenue</b>		
Sales of Latex & Scrap	25,196,451.06	22,967,272.59
<b>Other Revenue</b>		
<u>Add :-</u>		
Sundry Receipts	493,404.18	40,676.94
Rubber Replanting Subsidy	697,610.34	782,178.79
Cinnamon Income	- 1,191,014.52	146,841.45 969,697.18
<b>Total Revenue</b>	<b>26,387,465.58</b>	<b>23,936,969.77</b>
<b>Less :</b>		
<b>Expenses</b>		
Wages, Salaries and employee benefits (Note 14B)	16,841,774.52	15,690,813.66
Supplies and consumables used (Note 14B)	1,080,481.80	863,925.05
Depreciation and amortization expenses (Note 14B)	388,696.61	381,079.08
Maintenance of Property, Plants & Equip (Note 14B)	2,453,948.25	1,536,309.08
Other expenses (Note 14B)	129,277.64	178,062.40
Finance Costs (Note 14B)	204,427.60 21,098,606.42	110,531.66 18,760,720.93
<b>Surplus for the Period</b>	<b>Rs 5,288,859.16</b>	<b>5,176,248.84</b>

**RUBBER RESEARCH BOARD OF SRI LANKA**  
**NOTES TO THE STATEMENT OF FINANCIAL PERFORMANCE AS AT 31ST DECEMBER 2017**  
**KUMARAWATTA ESTATE WORKING ACCOUNT FOR THE YEAR ENDED 2017**

**Note 24**

	<b>2017</b>	<b>2016</b>
	<b>Rs.</b>	<b>Rs.</b>
Sales of Income	10,367.50	2,704.40
Rubber Re-Planting Subsidy	-	-
<u>Less :-</u>		
Maintenance Cost (Note 14C)	(5,109,377.47)	(4,721,528.46)
<b>Loss for the Year</b> <b>Rs.</b>	<b>(5,099,009.97)</b>	<b>(4,718,824.06)</b>

**RUBBER RESEARCH BOARD OF SRI LANKA**  
**NOTES TO THE STATEMENT OF FINANCIAL PERFORMANCE AS AT 31ST DECEMBER 2017**  
**NARAMPOLA ESTATE WORKING ACCOUNT FOR THE YEAR ENDED 2017**

**Note 25**

	<b>2017</b>	<b>2016</b>
	<b>Rs.</b>	<b>Rs.</b>
Sales of Sundry Crops	-	8,540.00
Rubber Sales	1,337,154.24	1,975,656.93
Rubber Re-Planting Subsidy	45,262.55	209,139.06
	1,382,416.79	2,193,335.99
<u>Less :-</u>		
Maintenance Cost (Note 14C)	(2,922,276.83)	(3,710,609.91)
<b>Rs.</b>	<b>(1,539,860.04)</b>	<b>(1,517,273.92)</b>

**RUBBER RESEARCH BOARD OF SRI LANKA**  
**NOTES TO THE STATEMENT OF FINANCIAL PERFORMANCE AS AT 31ST DECEMBER 2017**  
**NSF GRANTS OF SCHEDULES TO THE ACCOUNTS FOR THE YEAR ENDED 31.12.2017**

**Note 26**

Description	Votes No.								
	03.30M	03.30X	03.30I	03.30W	03.30U	03.30P	03.30Y	42.01.15	Total
Opening Balance	23,883.56	1,200,766.25	356,001.00	1,418,136.00	403,149.21	304,804.34	-		3,706,740.36
<b>Add :</b>									-
Fund Received		216,900.00					1,512,250.00	4,751,507.00	6,480,657.00
									-
	<b>23,883.56</b>	<b>1,417,666.25</b>	<b>356,001.00</b>	<b>1,418,136.00</b>	<b>403,149.21</b>	<b>304,804.34</b>	<b>1,512,250.00</b>	<b>4,751,507.00</b>	<b>10,187,397.36</b>
<b>Less :</b>									
Expenditure for the Year16									-
		1,039,474.73	-	1,418,136.00	16,387.50	304,804.34	500,446.61	-	3,279,249.18
<b>Balance as at 31.12.20</b>	<b>23,883.56</b>	<b>378,191.52</b>	<b>356,001.00</b>	<b>-</b>	<b>386,761.71</b>	<b>-</b>	<b>1,011,803.39</b>	<b>4,751,507.00</b>	<b>6,908,148.18</b>

<b>RUBBER RESEARCH BOARD OF SRI LANKA</b> <b>NOTES TO THE STATEMENT OF FINANCIAL PERFORMANCE AS AT 31ST DECEMBER 2017</b> <b>NSF GRANTS OF SCHEDULES TO THE ACCOUNTS FOR THE YEAR ENDED 31.12.2017</b>  <b>Note 26B</b>						
<b>Description</b>	<b>Vote 23.01.15</b>	<b>Vote 03.63G</b>	<b>Vote 03.63H</b>	<b>Vote 03.63K</b>	<b>03.63L</b>	<b>Total</b>
Opening Balance						-
<b>Add :</b>	7,164,000.00	45,800,000.00	8,850,000.00	4,000,000.00	49,700,000.00	115,514,000.00
Fund Received						-
	<b>7,164,000.00</b>	<b>45,800,000.00</b>	<b>8,850,000.00</b>	<b>4,000,000.00</b>	<b>49,700,000.00</b>	<b>115,514,000.00</b>
<b>Less :</b>						
Expenditure for the Year17	3,245,441.13	8,690,784.50	5,727,348.01	297,483.18	-	17,961,056.82
<b>Balance as at 31.12.2017</b>	<b>3,918,558.87</b>	<b>37,109,215.50</b>	<b>3,122,651.99</b>	<b>3,702,516.82</b>	<b>49,700,000.00</b>	<b>97,552,943.18</b>

**RUBBER RESEARCH BOARD OF SRI LANKA**

**SCHEDULE TO THE STATEMENT OF FINANCIAL PERFORMANCE AS AT 31ST DECEMBER 2017**

**INVENTORIES/ STOCKS - RRI**

**SCHEDULE 01**

	<b>2017</b>	<b>2016</b>
	<b>Rs.</b>	<b>Rs.</b>
Stock - Dartonfield	5,449,980.00	4,305,000.00
Stock - Rathmalana	817,385.63	743,738.76
Stationary	1,043,499.96	528,237.31
Stock - General	8,751,547.65	11,364,137.73
Stock in obsolete	489,004.07	489,004.07
Non Moving Stock	434,249.35	434,249.35
Monaragala Stock	135,597.00	-
polgahawela Stock	83,744.38	-
<b>Total</b>	<b>17,205,008.04</b>	<b>17,864,367.22</b>

**RUBBER RESEARCH BOARD OF SRI LANKA**  
**SCHEDULE TO THE ACCOUNTS FOR THE YEAR ENDED 31/12/2017**  
**SCHEDULE 02 - KURUWITA ESTATE STOCK**

<b>Fertilizer</b>	<b>2017</b>		<b>2016</b>	
	<b>Qty.(kg)</b>	<b>Rs.</b>	<b>Qty.(kg)</b>	<b>Rs.</b>
Urea	-		35.50kg	786.48
M.O.P.	-		9.5kg	213.73
H.E.R.P	-		212kg	3,180.00
T/750	-		78 Kg	1,911.00
Sodium bi sulphate	11.00 Kg	1,793.85	11Kg	1793.85
Di Ammonia Phosphate	-		36.5kg	984.59
Sulphate of Potash	-		74.9kg	2,272.62
Sulphate of Ammonia	-		87.9kg	3,126.50
Epson Soalt	-		164.6kg	4,032.42
Fomic acid	105Kg	20,400.00	35 Ltr	6000.00
Sodium sulphate	50 Kg	8,400.00	25 Kg	4200.00
L.P.Gas	-		1Nos	1,388.00
China Clay	-		280	4,599.35
Polythene	149.80 Kg	45,811.85	651.4Kg	199,211.15
Poly bags	10000 Nos	43,411.20	1000Nos	43,411.20
T/Cells	-		6Nos	360.00
Tar	-		1260Kg	79,155.00
Tapping Knives	7 Nos	3,955.00	9Nos	5,085.00
Jack Pole (3x4)	60.5 Lft	19,687.17		
Timber	-		1214 Ft	19,687.17
Zine Sulphate	-		-	-
Sulpher	3.2Kg	352.00	8.00Kg	880.00
Fungicide	1.3 Kg	2,449.93	1.3 Kg	2,449.93
Maxi crop	-		4 Kg	295.00
Ethanol	4 Lit	4,650.00		-
Brunolium	5 Lit	5,200.00		-
Eckel Broom	3 Nos	402.50		-
Tourch	6 Nos	360.00		-
Red power	28 Kg	4,170.00		-
Petrol	28 Lit	1,755.00		-
Cement	02bags	1,772.50		
<b>Total</b>		<b>164,571.00</b>		<b>385,022.99</b>

**RUBBER RESEARCH BOARD OF SRI LANKA**  
**SCHEDULE TO THE ACCOUNTS FOR THE YEAR ENDED 31/12/2017**

**SCHEDULE 03 - STOCK VALUE - DARTONFIELD ESTATE**

Item	2017		2016	
	Qty (Kg)	Value (Rs)	Qty (Kg)	Value (Rs)
Sodium Bi Sulphite	-	-	-	-
Sodium Sulphite	-	-	-	-
Formic Acid	-	-	-	-
Policer	-	-	-	-
Urea	414 Kg	9,581.24	414kgs	9,581.24
Kieserite	-	-	-	-
Cinnamon Manure	50 Kg	14,862.80	50 Kg	14,862.80
Dolomite	512.8 Kg	28,897.73	29788kgs	24,725.64
RU 465 N.P.K.	9250 Kg	381,646.38	1575kgs	39,254.56
M.O.P	378 Kg	8,737.58	378 Kg	8,737.58
Sulper	-	-	-	-
C.E.S	10 Kg	225.00	10kgs	225.00
D.A.P	10 Kg	225.00	-	-
S.O.A	10 Kg	225.00	10kgs	225.00
S.O.P	10 Kg	225.00	10kgs	225.00
Poultry	-	-	-	-
Weighing Scale	-	-	-	-
Di Amonia Posphate	-	-	10 Nos	225.00
Tar	2855 Lit	167,268.59	660Ltrs.	56,481.40
Coir Brooms	-	-	-	-
Brass Screws	-	-	-	-
P.V.C.Pipe	-	-	-	-
Plain Sheet	-	-	-	-
Bitumen (tar)	-	-	-	-
Wire Nails	-	-	-	-
Auticomonsive Paint	-	-	-	-
Bend 4"	-	-	-	-
China clay	850 Kg	14,660.71	75 Kg	1,274.23
Poly Bags	28750 Nos	86,075.00	28750nos	85,675.00
Etheral	22.35 Lit	33,309.17	17.25Ltrs.	13,157.44
Fire Wood	88 Yrd	31,417.27	-	-
Eckel Brooms	-	-	-	-
Polythene rain guard	140.3 Kg	46,098.37	-	-
Down Pipe (180 LF)	-	-	-	-
End Cap 1/f	-	-	-	-
Timber 3" x 4"	48 Lft	2,880.00	-	-
Timber 3" x 5"	117 Lft	8,775.00	-	-
Timber	-	-	2955/ft.	51,803.25
Timber 2" x 4"	140 Lft	5,005.00	-	-
Timber 2" x 2"	426.25 Lft	7,246.25	-	-
Timber 1" x 9"	115 Lft	5,197.50	-	-
Timber 1 1/8" x 4"	-	-	-	-
Timber 2" x 1"	167.75 Lft	7,115.00	-	-
Timber 2" x 2.5"	-	-	-	-
Timber 1" x 1/8"	140.9 Lft	9,158.50	-	-
Timber 2"x 1 1/2"	357 Lft	6,426.00	-	-
Cement	-	-	-	-
Gutter Box	4 Nos	2,783.76	4 Nos	2,783.76
V Belt	-	-	-	-
Gutter (Color)	60 Lft	7,440.60	60 Lf	7,440.60
U.709	450 Kg	21,770.85	100Kgs	2,527.80
Rain guard sealent	452.78 Kg	51,267.22	-	-
LDPE 600X300Polythene	-	-	-	-
<b>Total</b>		<b>958,520.52</b>		<b>319,205.30</b>

# **RUBBER RESEARCH BOARD OF SRI LANKA**

## **SCHEDULE TO THE STATEMENT OF FINANCIAL PERFORMANCE AS AT 31ST DECEMBER 2017**

### **SCHEDULE 04**

#### **DEPOSITS**

	<b>2017 Rs.</b>	<b>2016 Rs.</b>
Telecom	6,000.00	6,000.00
Electricity	90,500.00	90,500.00
Post Master General	12,376.91	10,512.41
Sundry	-	2,005.00
M.P.C.S. Moratuwa	50,000.00	50,000.00
New Bambalapitiya Service Station	4,000.00	4,000.00
Ceylon Oxygen Co. Ltd.	113,316.00	113,316.00
Tender	2,000.00	2,000.00
Lanka Filling station-Narahenpita	15,000.00	15,000.00
Leo Freight Services(Pvt) Ltd	3,801.00	3,801.00
M.P.C.S. Matugama (Fuel)	74,500.00	74,500.00
Samaranayake & Samaranayake	50,000.00	50,000.00
<b>Total</b>	<b>421,493.91</b>	<b>421,634.41</b>



**RUBBER RESEARCH BOARD OF SRI LANKA**  
**SCHEDULE TO THE STATEMENT OF FINANCIAL PERFORMANCE AS AT 31ST DECEMBER 2017**

	2,017 Rs.	2016 Rs.
<b>SCHEDULE 05</b>		
<b>OTHER DEBTORS</b>		
Thurul Warnakula		936,278.34
D.E.D.E.I.N.Perera		350,000.65
		<b>1,286,278.99</b>
<b>TRADE DEBTORS</b>		
General Debtors	<b>2,664,769.79</b>	<b>18,773,783.00</b>
<b>SUNDRY DEBTORS</b>		
Provident Fund Control A/C RRI	2,717,028.58	3,335,688.94
Interest Receivable	11,331.51	10,410.96
Unidentified	-	830,936.98
CARP Control Account	-	14,149.13
National Science Foundation	-	148,368.76
Medicinal Plant Project -2	-	219,701.03
Medicinal Plant Project -1	-	1,109.12
Rubber/Cane Cinnamon Project	-	14,466.24
CARP Project No 12/477/357	-	27,719.01
NRESA	-	5,400.00
Salaries Receivable	-	3,188.97
NSF Grant RG/2006/EPSPD/01	-	-
Training Centre	-	980,412.61
NSF Grant	-	296,410.00
ANRPC	-	40,454.53
Sandee Project	-	5,294.02
Medical Fund Loan	-	30,454.20
Nurseries	-	21,744.96
Handy Craft Project	57,235.25	61,135.25
Ministry of Science & Technology	-	41,687.50
N.S.F.Grant RG/2012/AG/06	37,725.56	37,725.56
NSF Grant RG/2008/AG/02	-	-
S.P.H.D.P	-	280,221.00
RRI/CRI/TRI Symposium	-	553,382.90
N.S.F.Grant RG.2010/AG/01	-	-
International Work Shop on White Root Dieses	-	82,029.84
Divineguma	-	537,285.89
N.S.F.Grant RG.2015/BT/01	-	-
	629.15	
<b>Total</b>	<b>2,823,950.05</b>	<b>7,579,377.40</b>

<b><i>LOAN RECEIVABLES</i></b>		
	<b>2017</b>	<b>2016</b>
Motor Car / Motor Car Repair Loan	196,250.00	251,250.00
Motor Cycle Loan	49,166.47	205,665.90
Personal/Distress/Study Loan	40,356.11	204,983.44
New Personal Loan	1,192,480.52	1,623,928.75
Staff Medical Fund Loan	34,973.64	125,960.42
Loan Receivables	954,323.84	
<b>Total</b>	<b>2,467,550.58</b>	<b>2,411,788.51</b>
<b>Note</b>		
<b>Bond Debtors</b>	<b>Balance as at 31.12.2017</b>	
H .H. Thalgaswatta	38,402.56	
B.P.Weera rathna	1,825,654.55	
N.A.A.D.Wickramarathna	7,245.46	
JAGSG Gunawardana	2.00	
Samanthie P Herath	25,000.00	
SMCE Silva	1,635,005.85	
Nalinda P Wicramasinghe	10,643.54	
G.V.L.Nilmini	1,084,612.81	
<b>Total</b>	<b>4,626,566.77</b>	

## RUBBER RESEARCH BOARD OF SRI LANKA

### SCHEDULE TO THE STATEMENT OF FINANCIAL PERFORMANCE AS AT 31ST DECEMBER 2017

#### **SCHEDULE 06**

#### **DOUBTFUL DEBTORS**

Provision for bad & doubtful debts have not been made since year 2002. A balance

has been transferred to debtors Clearance Account for clearance

**RUBBER RESEARCH BOARD OF SRI LANKA**  
**SCHEDULE TO THE ACCOUNTS FOR THE YEAR 31/12/2017**  
**KURUWITA ESTATE**  
**TRADE & OTHER RECEIVABLE**

**SCHEDULE 07**

	Rs. <b>2017</b>	Rs. <b>2016</b>
Check Roll	15,564.37	23,579.68
Festival Advance ( Staff)	130,000.00	-
Festival Advance	4,900	101,100
Postage	388.00	113.00
St.Joachime Estate	96,524.28	67,361.77
Sundry Debtors	9,176.49	9,176.49
Distress Loan		17,728.68
Electricity Bills Receivables	14,520.00	9,228.56
Fire Wood		30,175.61
Book Allowance	400.00	400.00
Payment in Advance	1,950.00	
	<b>273,423.14</b>	<b>258,863.79</b>

**DARTONFIELD ESTATE**  
**TRADE & OTHER RECEIVABLE**

	Rs. <b>2017</b>	Rs. <b>2016</b>
Adaptive Research Unit	-	-
Check Roll debtors	74,655.01	88,739.81
Deposit A/c	2,690.00	2,690.00
National Institute of Plantation Management	66,066.14	66,066.14
Personal Loan	16,432.41	16,432.41
Postage Stamp	5.00	360.00
Pry Month Rubber Industries	6,100.00	6,100.00
Festival Advance - Staff	273,000.00	228,150.00
Tamil Festival Advance	617,300.00	3,250.00
Vogen Estate	56,203.88	71,469.75
Festival Advance Christmas	124,550.00	9,550.00
Special Festive Advance	16,350.00	110,000.00
Project GPB / NC / 2014 A/C	992,926.00	353,781.00
Factory chemical Balance	59,482.87	22,657.38
Drying Tower Repair A/C	-	666,320.29
Co-Operative Society	16,125.00	16,125.00
Special Salary advance	46,189.36	2,189.36
Special Festive Advance	4,550.00	4,550.00
L.J.E.W.U,	38,352.00	-
Whiteroot controlling Project	117,074.83	-
Kuruwita Sub Station	359,000.00	-
Supdt Jeep Repair	-	110,479.91
Festival Advance Tamil	-	556,550.00
Payment in advance	-	99,811.50
Receivable A/c	1,368,074.39	
	<b>4,255,126.89</b>	<b>2,435,272.55</b>

**RUBBER RESEARCH BOARD OF SRI LANKA**  
**SCHEDULE TO THE STATEMENT OF FINANCIAL PERFORMANCE AS AT 31ST DECEMBER 2017**  
**CREDITORS 2017**

**SCHEDULE 08**

	<b>2.017.00</b> <b>Rs.</b>	<b>2.016.00</b> <b>Rs.</b>
Creditors Ledger Control A/C (C L C)	4,081,799.37	7,952,179.68
<b>SUNDRY CREDITORS</b>		
Biometry Project - Climate Change on Rubber	16,338.28	16,338.28
Canteen Deposits	13,500.00	13,500.00
Carbon Market Project	118,108.57	118,108.57
Centre for Poverty Analysis	1,841.25	1,841.25
Contract Deposits	15,350.00	15,350.00
Divineguma B461	1,063,933.42	1,063,933.42
G.S.I.Mapping of Tea & Rubber Lands on Galle Dis.	155,000.00	155,000.00
Humate Plus Experiments	22,101.50	22,101.50
I.R.R.D.B.Plant Breeding Workshop	294,552.18	294,552.18
Insurance Claim Received	19,285.71	19,285.71
Intercropping Research (Sadaharitha Plantation)	87,243.75	87,243.75
Medical Fund Reserve RRI Staff	56.00	10,017.50
Moratuwa University	1,025,768.00	1,025,768.00
National Science Foundation	-	-
N.S.F.Grant 2015/EQ	-	1,418,136.00
N.S.F.Grant 2016/AG/01	-	1,200,766.25
N.S.F.Grant RG/2012/AG/10	-	23,883.56
N.S.F.Grant RG/2012/Tech/D04	-	304,804.34
N.S.F.Grant RG/2015/BT-01	-	455,441.69
National Science Foundation NSF/RAP/2001/RRI/01	705.96	705.96
National Workers Congress	67,497.50	67,497.50
NSF - PG/99/C/7	5,637.68	5,637.68
NSF - SIDA/98/EP01	95,014.85	95,014.85
NSF Grant No RG/2014/EQ/08	-	-
NSF Grant RG/2006/SPR/06	-	356,001.00
Payee Tax	57,446.31	49,103.99
Plant Science Intercropping Unit (Essex U.K)	21,731.55	21,731.55
Plantation Development Project	328,819.09	328,819.09
Postgraduate Institute of Peradeniya	24,640.00	24,640.00
Provident Fund Account - RDD	1,958,812.20	443,036.16
R.D.D.Kegalle	23,318.75	23,318.75
RDD (Salary Arrears)	92,837.57	92,837.57
RDD Nursery - Gampaha	45,000.00	45,000.00
RDD Staff Payments & Recoveries Control A/C	1,621.72	1,621.72
Receipt in Adr(Welfare)	595.00	595.00
Receipt in Advance (stamp)	271,645.00	271,645.00
Receipt-in -Advance A/C (J.I.C.A)	208,297.09	208,297.09
Ru: Ban: Intercropping Programme Ecology UK (D F I D)	542,618.53	542,618.53
Staff Fire Wood A/C	10,813.24	10,813.24
Tender Deposits	1,822,124.34	1,538,133.62
Vitex Project	9,288.79	9,288.79
White root Diseases Research Project Sweden	25,717.80	25,717.80
Sundry Creditors	2,483,427.47	-
Creditors Clearance A/C	4,455,765.03	-
Staff Creditors	726,026.12	-
	165,000.00	-
<b>Total</b>	<b>20,359,279.62</b>	<b>18,360,326.57</b>
<b>PAYABLE</b>		
Rent Payable	5,693.20	-
Medical Fund A/C	-	33,099.87
Audit fee Payable A/C	-	556,110.00
Abetment - Payable A/C	-	19,745.64
Retention Payable A/C	826,283.92	826,283.92
Lease Rental Payable A/C Kumarawatta, Narampola	-	8,320,000.00
Legal Fee Payable A/C	-	874,520.72
Payable	<b>831,977.12</b>	<b>10,629,760.15</b>

**RUBBER RESEARCH BOARD OF SRI LANKA**  
**SCHEDULE TO THE ACCOUNTS FOR THE YEAR ENDED 31/12/2017**

**SCHEDULE 09 -KURUWITA - PAYABLES**

	<b><u>2017</u></b> <b><u>Rs.</u></b>	<b><u>2016</u></b> <b><u>Rs.</u></b>
Check Role Wagers	1,063,550.00	1,190,880.00
CEB	17,629.82	19,271.95
Sri Lanka Telecom Ltd	7,541.47	10,536.12
EPF Payable	332,575.88	367,832.75
ETF Payable	45,351.26	50,159.15
Holiday Pay	727,290.00	633,960.00
Attendance Bonus	54,166.67	55,425.00
Tax payable		9,464.32
Death Donation Welfare	10,000.00	13,377.00
Deposits	59,662.00	59,662.00
Receipt in Advance		15,783.02
RRI Provident Fund		41,667.39
L.K.S.Rubber Stores	1,400.00	-
Palawela Rubber Stores	10,350.00	27,225.00
Prasad Hardware	3,263.00	7,909.00
Kuruwita M.P.C.S	26,805.00	5,357.00
S.L.N.S.S	30,480.00	-
Vishwa Shakthi Welfare	43,300.00	48,250.00
Accrued expenditure	14,498.40	50,427.50
Un paid coins A/C	48,023.41	43,639.74
Sundry Creditors	13,646.95	1,650.00
Palanda Hardware	16,275.00	1,433.00
Motor Cycle Loan - staff		-
Personal Bank Loan	114,050.00	121,850.00
Nidahas Sewaka Sangamaya	-	55,200.00
<b>Total</b>	<b>2,639,858.86</b>	<b>2,830,959.94</b>

**RUBBER RESEARCH BOARD OF SRI LANKA**  
**SCHEDULE TO THE ACCOUNTS FOR THE YEAR ENDED 31/12/2017**  
**DARTONFIELD ESTATE**  
**SCHEDULE 10 - PAYABLES**

	<b>Rs.</b> <b>2017</b>	<b>Rs.</b> <b>2016</b>
Attendance Bonus	135,050.00	134,300.00
Buddhist Society		3,450.00
Check Roll	4,202,370.74	3,763,650.00
Commission on Cash Transport	155,172.05	529,838.96
Samaranayaka & Samaranayaka	14,100.00	10,210.00
C.S.C. & W.U.	570.00	570.00
C.P.M.S.U.	16,600.00	2,100.00
E.P.F.	994,468.41	940,754.45
E.T.F.	135,609.31	128,284.74
Holiday Pay	1,449,914.93	1,348,321.37
Horticulture Society	-	1,260.00
Janatha Fertilizer Enterprises	298,577.50	298,577.50
Kovil Fund - Dartonfield	6,500.00	215,000.00
Kovil Fund - Galewatta	7,800.00	99,200.00
Kalyani Trading (Pvt)Ltd	-	15,170.00
L.J.E.W.U.	-	78,608.00
National Savings Bank	4,350.00	26,100.00
New Paper Agent	1,080.00	3,060.00
RRI Welfare Society Colombo	-	69,240.00
Refundable Deposits	42,796.00	42,796.00
RRI Club	-	63,902.00
Staff Provident fund	-	869,186.54
S.L.N.S.S.	7,200.00	88,080.00
Thrift Society	-	25,217.00
Unpaid Wagers	-	210,772.28
Welfare Society - N' Kele	3,150.00	63,700.00
Welfare Society - H.O	13,000.00	145,175.50
Wijegunawardana & Sons	57,195.00	236,989.00
Agalawatta Auto Service		4,980.00
Agalawatta Motors		17,470.00
Profit Bonus	104,639.56	104,639.56
Sundry Creditors	48,897.90	36,828.00
State Mortgage Bank	80,290.00	80,290.00
Chanlo Hardware	16,330.00	26,215.00
Chemanex Ltd	88,436.52	53,380.23
National Housing Development Authority	8,958.00	44,790.00
Udaya Printers	660.00	660.00
RRI Canteen	4,045.00	24,355.00
CEB	-	969.67
Festival Advance Staff	-	5,000.00
JD& sons Pvt Ltd	1,489,290.52	3,603,571.67
Kandy Plastic Industries	8,235.00	28,350.00
Receipts in advance workers	15,400.48	15,400.48
PND Construction Pvt Ltd	8,050.00	8,050.00
Ranjanas Grocery		60,163.97
Vishwashakthi Welfare	26,700.00	67,100.00
NUW	14,100.00	21,000.00
Unpaid coins	3,324.87	3,178.73
Project No. 03.63 H - Model Estate	1,637,872.58	
Poly pac secco Ltd.	705,416.28	
	<b>11,806,150.65</b>	<b>13,619,905.65</b>

**RUBBER RESEARCH BOARD OF SRI LANKA**

**SCHEDULE TO THE STATEMENT OF FINANCIAL PERFORMANCE AS AT 31ST DECEMBER 2017**

**Accrued Expenses**

Schedule 11

	<b>Rs.</b>	<b>Rs.</b>
<b>09-i RRI</b>	<b>2017</b>	<b>2016</b>
Accured Expenses	3,913,180.70	18,946,105.63
Overtime 2016 December	572,990.45	781,929.42
Travelling & Subsistence 2016 Dec	562,239.63	372,337.23
Suppliers Payable A/C	20,565,039.98	-
Contract Payable A/C	14,433,676.90	-
	<b>40,047,127.66</b>	<b>20,100,372.28</b>

**Dartonfield Estate (09-iii)**

Overtime, Travel. & Subsist. - Dec'2017	214,021.60	60,832.82
Labor Charges - December 2017		6,093.36
Meals supply to Tappers		-
Re-imbusement of Medical expenses to Staff	214,021.60	25,090.80
	<b>214,021.60</b>	<b>92,016.98</b>
<b>Grand Total</b>	<b>40,261,149.26</b>	<b>20,192,389.26</b>

(Inter Transaction Accounts - Current A/C)

	<b>RRI</b>	<b>K/W</b>	<b>D/F</b>	<b>Total</b>
Dartonfield	(14,793,490.44)		14,793,490.44	-
Kuruwita	1,652,398.25	(1,652,398.25)		-
RRI	(13,141,092.19)	(1,652,398.25)	14,793,490.44	-

**RUBBER RESEARCH BOARD OF SRI LANKA**  
**SCHEDULE TO THE STATEMENT OF FINANCIAL PERFORMANCE AS AT 31ST DECEMBER 2017**  
**Schedule 12 OTHER CAPITAL GRANTS - 2017**  
**Other Capital Grants**

<b>Accumulated Fund</b>	<b>Value as at 01.01.2017 Rs.</b>	<b>Additions During Year Rs.</b>	<b>Amortization on Grants Rs.</b>	<b>Value as at 31.12.2017 Rs.</b>
O.D.A. Grant	5,606.79			5,606.79
Government Grant	1,556,097.28			1,556,097.28
Australian Grant	165,221.00			165,221.00
World Bank Grant	4,739,779.82			4,739,779.82
UNDP Grant	2,571,866.95			2,571,866.95
UNICEF Grant	10,000.00			10,000.00
CRI /TRI Grant	334,058.64			334,058.64
NARESA Grant	1,345,912.39			1,345,912.39
UNDP Research Grant	2,510,441.46			2,510,441.46
Tea Board Grant	445,343.40			445,343.40
SRRP I Grant	12,624.52			12,624.52
ARP Project	4,578,055.64			4,578,055.64
CARP Grant	54,738.94			54,738.94
Treasury Grant (Motor Vehicles)	15,375,000.00	-		15,375,000.00
Medicinal Plant Project Grant	15,624.46			15,624.46
NERESA Grant	5,600.00			5,600.00
SRRP II - Grant	7,644,391.73			7,644,391.73
Treasury Grant (Capital)	8,893,721.84			8,893,721.84
N.S.F. Grant	1,487,616.70			1,487,616.70
D.F.I.D. Grant	49,151.93			49,151.93
Staff Grant Comfort room	10,272.93			10,272.93
European Union Grant	9,693.90			9,693.90
Centre for Poverty	2,221.03			2,221.03
Environment Project Phase II	3,489.70			3,489.70
Climate Change Project	3,445.16			3,445.16
3rd Symposium Grant	24,621.87			24,621.87
A.F.National Research Council	329,781.12			329,781.12
Divineguma	545,240.32			545,240.32
International Foundation for Science	73,536.00			73,536.00
Agricultural Research	12,542,595.30			12,542,595.30
Special Project Other Grant	8,958,000.00			8,958,000.00
NSF and Other Grants (Total )	-	-		6,908,148.18
Special Capital Project - MPI				97,552,943.18
	<b>74,303,750.82</b>	<b>-</b>	<b>-</b>	<b>178,764,842.18</b>



***Labour rates and break down of cost of production from 2013 to 2017 (Rs/Kg) in  
Dartonfield estate***

	<b>2013</b>	<b>2014</b>	<b>2015</b>	<b>2016</b>	<b>2017</b>
1. Labour wages	572.00	687.50	687.50	687.50 up to Sept. 805 from Oct.	805
2. Cost of production	262.39	245.06	270.57	241.13	280.55
2.1 Tapping	100.94	118.61	113.94	116.46	122.77
2.2 Manufacture	35.68	35.82	36.43	32.35	34.47
2.3 General charges	102.26	74.49	103.07	74.43	97.29
2.4 M/area upkeep	23.51	16.14	17.13	17.89	26.02
3. N.S.A.	348.74	256.56	255.26	234.84	319.00
4. Profit per kg	86.35	11.50	(15.31)	(6.29)	38.45

***Labour rate (Rs) and the break down of the cost of production from 2013 to 2017 (Rs/kg) in  
Kuruwita estate***

	<b>2013</b>	<b>2014</b>	<b>2015</b>	<b>2016</b>	<b>2017</b>
Labour rate	687.50	687.50	687.50	Jan. - Nov. 687.50 From December 805.00	805.00
Cost of production	187.19	198.00	191.21	179.27	250.01
Tapping cost	90.44	96.70	87.77	89.65	99.08
Manufacturing	-	-	22.14	21.49	32.65
General chargers	74.55	79.58	64.72	54.48	92.38
Field & cultivation cost	22.20	21.72	16.58	13.65	25.90
N.S.A	339.62	251.92	207.86	217.11	294.18
Profit per kg.	152.43	53.92	16.65	37.84	44.17



# ජාතික විගණන කාර්යාලය

## தேசிய கணக்காய்வு அலுவலகம்

### NATIONAL AUDIT OFFICE



මගේ අංකය  
எனது இல.  
My No.

PLA/C/RRB/1/17/09

ඔබේ අංකය  
உமது இல.  
Your No.

දිනය  
திகதி  
Date



The Chairman

Sri Lanka Rubber Research Board

#### Report of the Auditor General on the Financial Statements of the Sri Lanka Rubber Research Board for the year ended 31 December 2017 in terms of Section 14 (2) (c) of the Finance Act, No. 38 of 1971.

The audit of financial statements of the Sri Lanka Rubber Research Board for the year ended 31 December 2017 comprising the statement of financial position as at 31 December 2017 and the statement of financial performance, statement of changes in equity and cash flow statement for the year then ended and a summary of significant accounting policies and other explanatory information was carried out under my direction in pursuance of provisions in Article 154(1) of the Constitution of the Democratic Socialist Republic of Sri Lanka read in conjunction with Section 13(1) of the Finance Act, No. 38 of 1971 and section 8(2) of the Rubber Research Ordinance (cap 439) as amended by the Rubber Research (Amendment) Act, No.11 of 1956. My comments and observations which I consider should be published with the Annual Report of the Institute in terms of Section 14(2) (c) of the Finance Act appear in this report.

#### 1.2 Management's Responsibility for the Financial Statements

The management is responsible for the preparation and fair presentation of these financial statements in accordance with Sri Lanka Public Sector Accounting Standards and for such internal control as the management determines is necessary to enable the preparation of financial statements that are free from material misstatements whether due to fraud or error.

අංක 306/72, පොල්දැව් පාර, බත්තරමුල්ල, ශ්‍රී ලංකාව

+94 11 2 88 70 28 - 34

+94 11 2 88 72 23

இல. 306/72, பொல்துவ வீதி, பத்தரமுல்லை, இலங்கை.

No. 306/72, Polduwa Road, Battaramulla, Sri Lanka.

ag@auditorgeneral.gov.lk

www.auditorgeneral.gov.lk



### 1.3 Auditor's Responsibility

My responsibility is to express an opinion on these financial statements based on my audit. I conducted my audit in accordance with Sri Lanka Auditing Standards consistent with International Auditing Standards of Supreme Audit Institutions (ISSAI 1000-1810). Those Standards require that I comply with ethical requirements and plan and perform the audit to obtain reasonable assurance about whether the financial statements are free from material misstatements.

An audit involves performing procedures to obtain audit evidence about the amounts and disclosures in the financial statements. The procedures selected depend on the auditor's judgment, including the assessment of the risks of material misstatements of the financial statements, whether due to fraud or error. In making those risk assessments, the auditor considers internal control relevant to the Institute's preparation and fair presentation of the financial statements in order to design audit procedures that are appropriate in the circumstances, but not for the purpose of expressing an opinion on the effectiveness of the Institute's internal control. An audit also includes evaluating the appropriateness of accounting policies used and the reasonableness of accounting estimates made by management, as well as evaluating the overall presentation of financial statements. Sub-sections (3) and (4) of Section 13 of the Finance Act, No. 38 of 1971 give discretionary powers to the Auditor General to determine the scope and the extent of the audit.

I believe that the audit evidence I have obtained is sufficient and appropriate to provide a basis for my audit opinion.

### 1.4 Basis for Qualified Opinion

My opinion is qualified based on the matters described in paragraph 2.2 of this report.



## 2. Financial Statements

### 2.1 Qualified Opinion

In my opinion, except for the effects of the matters described in paragraph 2.2 of this report the financial statements give a true and fair view of the financial position of the Sri Lanka Rubber Research Board as at 31 December 2017 and its financial performance and cash flows for the year then ended in accordance with Sri Lanka Public Sector Accounting Standards.

### 2.2 Comments on Financial Statements

#### 2.2.1 Sri Lanka Public Sector Accounting Standards

The following non-compliances were observed.

##### (a) Sri Lanka Public Sector Accounting Standard 02

- (i) Even though Depreciation and provision for gratuity had been adjusted to Statement of Financial Performance in the year under review as Rs.27,361,048 and Rs.30,670,025 respectively, depreciation of Rs. 30,550,952 and provision for gratuity of Rs. 12,769,448 had been adjusted in the Cash flow statement in adjusting for non-cash transactions to the deficit for the year.
- (ii) Though the Other donations received to the Board Rs. 21,240,306 had been accounted as other income, in the Statement of financial performance for the year, had been shown as cash inflow under financial activities in the cash flow statement.





(iii) According to the cash flow statement presented, changes in working capital should be totaled to Rs. 62,343,677; it had been shown as Rs. 61,948,791 due to errors in addition.

(iv) Though the purchases of non-current assets were Rs.63,361,895 in year the 2017; investment activities had been overstated by Rs. 3,189,905 since the purchase of property, plant and equipment was recorded as Rs. 66,551,800 in the cash flow statement.

(b) Sri Lanka Public Sector Accounting Standard 09

As per section 15 in the standard, even though inventories should be valued to lower of cost and net realizable value, inventory in warehouse had been valued at its average cost of Rs.18,328,099 included with outdated inventories and inventories not in use totaled to Rs.923,253.

## 2.2.2 Accounting policies

The following observations are made.

(a) According to the accounting policy of the Board in accounting for Capital Grants, though it is stated that the government grants are identified to income on a systematic basis as per the useful life of assets which are purchased under capital grants, actions had not been taken as stated since last few years for Capital grants totaled to Rs. 178,764,842 which had been received from treasury and other institutes for different projects.

(b) As per paragraph 69 in Sri Lanka Public Sector Accounting Standard 07, though it is required to start depreciate an asset when it is ready to use, in contrary to that an accounting policy had been formed not to depreciate non-current assets in the year of purchase.



- (c) Though the cost of Rs. 10,504,650 on development of internal ways of the board had been recorded under non-current assets as at 31 December 2017, a depreciation policy had not been formed on those assets.

### 2.2.3 Accounting Deficiencies

-----  
The following observations are made.

- (a) A depreciation totaling to Rs. 246,911 calculated on two account balances of tea and cinnamon re-plantation as at 31 December 2017 had not been taken to Statement of Financial performance.
- (b) The retentions totaling to Rs.654, 736 for the work done on renovation of internal ways and building construction had not been brought to account in the year 2017.
- (c) An advance payment of Rs. 580,803 which had been deducted in paying to a contractor had not been deducted from the relevant ledger account thus resulting in the overstatement of advance balance and understatement of balance in construction account by that amount.
- (d) An advance payment and first bill amount totaling Rs. 6,506,218 relating to 2 constructions in the year under review had been brought to building account instead of work-in-progress account.
- (e) A balance of Rs.63, 168 in supply advance account which had not been shown as a closing balance at 31 December previous year, had been marked as an opening balance in the year under review and taken to the financial statements.
- (f) Fixed assets bought for Rs. 5,570,499 from grants received in the year 2017 to project "Million 60", had been cut off as an expense in the year under review instead of brought in to account as fixed assets.
- (g) A stock not supplied totaling to Rs. 20,565,039 as at 31 December 2017 had been shown as a current asset and a current liability in the financial statements.



#### 2.2.4 Unexplained differences

Though the balances of 21 debtors totaling Rs.908, 295 as at 31 December 2017, it had been shown as zero balance according to the letters of confirmation.

#### 2.2.5 Lack of Evidence for Audit

The evidence indicated against the following items had not been furnished to audit.

Item of Account	Value	Evidence not made available
	Rs	
(a) Debtors		
Normal debtors	2,664,769	confirmation letters of balances
Debtors	2,823,950	
Debtors settlement account	23,523,953	
Total	29,012,672	
(b) Creditors	20,359,279	

#### 2.3 Accounts Receivable and Payable

The following observations are made.

(a) Actions had not been taken to recover a balance of Rs.17,336,616 over 5 years out of the balance of Rs.23,523,954 in the settlement account of debtors which had been included in other current assets as at 31 December of the year under review.

(b) Actions had not been taken to settle inactive sundry creditors for a period over 5 years to 10 years totaling Rs.7, 377,774.





## 2.4 Non-compliance with Laws, Rules, Regulations and Management Decisions

The following non-compliances were observed.

Reference to Laws, Rules and Regulations	Non-compliance
(a) Chapter XV in Establishment Code of the Democratic Socialist Republic of Sri Lanka	Actions had not been taken to recover balances due to the board from period of 2 years to 27 years totaling Rs.6,634,929 from 5 officers those who had defaulted the conditions in the bond when overseas for educational purposes.
(b) Treasury Circulars	
(i) Circular No.842 of 19 December 1978	The register of fixed assets had not been maintained.
(ii) IAI Circular 2002/02 of 28 November 2002	A fixed asset register for computer accessories and software had not been maintained.
(iii) National library and documentation Services board Circular No 2004/PS/01 of 26 January 2004	Board of survey for the year 2017 had not been done for library bodes.





### 3. Financial Review

#### 3.1 Financial Results

According to the financial statements presented, the financial result of the board for the year under review had been a deficit of Rs.45,382,393 as compared with the corresponding deficit of Rs.20,718,304 for the preceding year, thus indicating a deterioration of Rs.24,664,089 in the financial result of the year under review, as compared with the preceding year. The other expenditure for the year under review had increased by Rs.48,935,913 as compared with the preceding year had been the main reason for the above deterioration in the financial results.

In analysing the financial results for the year under review and the preceding 4 years, the deficit with fluctuations for the year under review was Rs. 45,382,393 which had been Rs.84, 950,295 in the year 2013. Nevertheless, in re-adjusting the employees remuneration and the depreciation on the non-current assets to the financial result, though the contribution of the board in the year 2013 was Rs.180,081,608 which had been gradually improved till the year 2015, the contribution had decreased from the preceding year and it was Rs. 313,961,232 in the year under review.

#### 3.2 Analytical Financial Review

Out of the four estates belonging to the board, two estates had incurred losses and two estates had incurred profits during the year under review. Though the loss from the four estates in the preceding year was Rs.3,078,555, a profit of Rs.9,929,952 of the year under review such that an improvement in profit by 423 per cent. The loss of the Dartenfield estate was Rs.2,018,705 for the preceding year, which had been improved by 659 per cent in the year under review and converted to a profit of Rs.11,279,962 and that had been the main impact on the overall profit.

#### 3.3 Legal actions instituted against the institute

The workers had filed 4 cases against the board as at 31 December 2017 and a fee of Rs.1,762,624 had been spent as legal expenses of the year under review.



#### 4. Operating Review

##### 4.1 Performance

##### 4.1.1 Operation and review

The following observations are made.

- (a) Though the board had introduced high class clone group by the year 2009 which yields annual standard of 3000 kilograms per hectare, at present the yield per hectare was about 800 kilograms.
- (b) 3 special projects had been started of the year under review, though performance indicators had been prepared to measure the performance of it the performance evaluation report had not been prepared based on those indicators.

##### 4.2 Management activities

The following observations are made.

- (a) Though 2 innovations had been identified through research and had taken patents for 3 years to 8 years, actions had not been taken to present them to innovative products.
- (b) Though the cabinet approval had been given to acquire lands of the year 2013, estates at Narampola (Alawwa) and Kumarawaththa (Monaragala) with buildings which were constructed by Rubber Research Board bearing a cost of Rs.16,199,917 had not been acquired till the year under review.
- (c) A balance of Rs.1,074,162 in provision for doubtful debt account as at 31 December of the preceding year had been written-off from the settlement account for debtors without obtaining approval from the treasury.



(d) Out of advances paid to 18 suppliers amounting to Rs. 17,465,983 from 01 October to 31 December of the year 2017 Goods and services valued at Rs. 1,306,513 only had been supplied by 10 May 2018.

(e) As per the boards of survey reports, a shortage of stock was Rs.147,292 and actions had not been taken to identify the reasons for the stock shortage.

#### 4.3 Under Utilization of Funds

A sum of Rs.5,046,772 had been deposited in a saving account without the treasury approval in the previous year to establish a medical aid fund had remaining without utilized.

#### 4.4 Idle and underutilized assets

The following observations are made.

(a) Two machines with a cost of Rs. 9,327,004 had remain idle due to actions had not been taken to repair for time period of 2 years to 8 years.

(b) A Rubber Process Analyzer equipment and accessories purchased for Rs.10,960,200 in the month of April 2017,had been remained idle due to not installation even as at June 2018.

#### 4.5 Un-economic transactions

Surcharges of Rs. 933,567 had been paid due to not including the cost of living allowance in computation the contribution to the funds and in computation the gratuity allowance since 2006 to October 2011 as per section 47 of Employees Provident Fund Act, No.15 of 1958 and the section 16 of Employee Trust fund Act, No.46 of 1980.





## 5. Sustainable development

### 5.1 Achieving Sustainable Development Goals

It is required to take actions as per the United Nations Year 2030 “Agenda” on Sustainable Development, the Rubber Research Board had been aware on how the activities should be implemented regarding which comes under own scope relating to the year under review.

## 6. Accountability and Good Governance

### 6.1 Delayed Projects

A contract had signed on 29 December 2016 with the respective contractor valued at Rs.17,338,090 to construct the work site building of the Board, though this contract should be finished within 190 days and the days had extended up to 31 October 2017 and the contract had not been finished till 31 July 2018.

### 6.2 Un-resolved Audit Paragraphs

The following observations are made.

- (a) A loss of Rs.8,090,574 had been caused to the Government on account of concessions of the Customs Duty and other duties on a motor vehicle imported under the motor vehicle permit issued on 29 November 2011 as per provisions in Trade, Tariff and Investment Policy Circular No.1/2010 of 10 December 2010 to an Estates Superintendent recruited without qualifications on contract basis. Actions had not been taken for the recovery from the responsible person for that as per the letter by Trade and Investment Policy Department TIP/SS/01/04/08/10 dated on 14 June 2016.
- (b) Actions had not been taken to reimburse the sum of Rs. 2,211,770 on behalf of to train graduates from the Ministry of Plantation that paid since the year 2011 to up to date.



## 7. Systems and Controls

Deficiencies in systems and controls observed during the course of audit were brought to the notice of the Chairman of the Board from time to time. Special attention is needed in respect of the following areas of control.

Areas of Systems and Controls	Observation
(a) Accounting	(i) Not maintaining Journal entries properly. (ii) Action had not been taken to recover arrears loan balances. (iii) Not prepared an internal control system to recover inquiry charges
(b) Library Administration	(i) Details on delay in handing over of books out from library had not been documentation. (ii) Deficiencies exist in implementing the regulations introduced to use of library books.
(c) Staff Administration	(i) Not obtain the approval from the Treasury for the reimbursement procedure of medical bills. (ii) Not obtain the approval by field officers from head of department/ sectional heads prior to departures.



- (d) Inventory and stock control
- (iii) Not maintain visiting register and daily working reports.
  - (i) Failure to maintain an inventory register regularly and all items not documentary.
  - (ii) Not prepared a suitable methodology to recognize goods receiving under special projects.
  - (iii) Identifying the stock shortage the board it not corrected.
  - (iv) Failure to introduce formal methodology to store chemicals securely, formal way to pack and documentation.
- (e) Asset Management
- (i) Failure to prepare schedules in order to identify values of items separately for biological assets and absence of information relating to maturity period of each asset.
  - (ii) For conducting of Board of surveys of the board had been done by entries made in the inventory register without using T and A 66 forms.

W.P.C.Wickckramarathna  
Auditor General (Acting)