

ශ්‍රී ලංකා රබර් පර්යේෂණායතනය

**RUBBER RESEARCH INSTITUTE  
OF SRI LANKA**



**2018**

**වාර්ෂික වාර්තාව**  
**Annual Report**

# **Rubber Research Institute of Sri Lanka**

## **Dartonfield, Agalawatta**

### **Vision**

*The Institute's vision is to emerge as the centre of excellence in providing high quality scientific technologies to the rubber industry.*

### **Mission**

*The Institute's mission is to revitalize the rubber sector by developing economically and environmentally sustainable innovations and transferring the latest technologies to the stakeholders through training and advisory services.*

### **Objectives**

- *Increase productivity of rubber to international standards*
- *Increase national production of Natural Rubber (NR) to meet the increasing demand*
- *Optimal and sustainable utilization of land, labour and other resources*
- *Maximize domestic value addition to natural rubber*
- *Improve the organizational effectiveness by encouraging individual competency and self development of RRISL personnel*

### **Policies**

- *Continuation of the research activities on all aspects of rubber production and processing*
- *Continue to promote environmentally friendly and sustainable rubber industry*
- *Transfer the developed technologies through training and advisory services*

## About us

*The origin of rubber research in Sri Lanka goes back to 1909, when a group of planters in the Kalutara district got the service of a chemist to study the coagulation of rubber. This was later expanded to form a Rubber Research Scheme in 1913 and then named as the Rubber Research Institute of Ceylon (now Sri Lanka) in 1951 giving the status that the Rubber Research Institute of Sri Lanka (RRISL) is the oldest Research Institute on rubber in the world. It has a proud record of service to the industry, in plant breeding, agro-management practices and the chemistry of raw rubber.*

*RRISL is the nodal agency in Sri Lanka charged with the statutory responsibility for research and development on all aspects of rubber cultivation and processing for the benefit of the rubber industry. The institute specializes in rubber research, both in the biology of the crop and the chemistry of the natural rubber and the technology of the product. Further, the institute is committed towards technology transfer activities and training of extension personnel and the other stakeholders. Accordingly, it has five biological research departments i.e. Plant Science, Genetics & Plant Breeding, Plant Pathology & Microbiology, Soils & Plant Nutrition and Biochemistry & Plant Physiology and four chemistry departments i.e. Raw Rubber Processing Development & Chemical Engineering, Raw Rubber & Chemical Analysis, Polymer Chemistry and Raw Rubber Technology & Development and the Advisory Services Department for technology transfer together with units for Adaptive Research, Biometry, Agricultural Economics, Audio Visual & Information Technology and Library.*



**RUBBER RESEARCH BOARD OF SRI LANKA**  
**ANNUAL REPORT 2018**

**Contents**

Statements on Vision, Mission, Objectives & Policies	i
About Rubber Research Institute of Sri Lanka	ii
List of Abbreviations	iv
Director's Report	1
Organizational Structure	6
Major Achievements	7
Activities of Research Departments	10
Awards	24
Board of Management, Committees and the Staff	25
Financial Statements	39
Auditor General's Report	94

**Cover: Characterization of polymer sample using the latest  
TG/FTIR Instrument at Polymer Chemistry Department**

## **List of Abbreviations**

ANRPC	- Association for Natural Rubber Producing Countries
COP	- Cost of Production
CSD	- Civil Security Department
ECB	- Encapsulated Coir Bricks
ERP	- Eppawala Rock Phosphate
EU 28	- European Union Countries
GRT	- Ground Rubber Tyre
HP	- Hand Pollination
IPT	- Intake per Tapping
IRRDB	- International Rubber Research & Development Board
IRSG	- International Rubber Study Group
NR	- Natural Rubber
NIPM	- National Institute of Plantation Management
NSA	- Net Sale Average
PMI	- Purchasing Managers' Index
PRI	- Plastic Retention Index
R & D	- Research & Development
REO	- Rubber Extension Officer
RPC	- Regional Plantation Companies
RSS	- Ribbed Smoked Sheets
SMR	- Synthetic Mixed Rubber
SR	- Synthetic Rubber
TOCOM	- Tokyo Commodity Exchange
TPD	- Tapping Panel Dryness
TSR	- Technically Specified Rubber
YPH	- Yield per Hectare

## **Director's Report**

### **Rubber Research Institute of Sri Lanka**

---

This review provides an overview of the local and international scenario of the rubber industry together with how research of the Rubber Research Institute of Sri Lanka (RRISL) has been geared to address the in-country issues. Since the details of research and development (R&D) activities conducted under each research division are provided in separate sections, this comprises only the major directions of research together with some highlights. Key obstacles for R&D are also mentioned very briefly. In addition to R&D, improvements made in administrative and financial functions of the institute are stated.

#### **Rubber industry of Sri Lanka**

##### ***Rubber production***

According to the statistics available at the Rubber Development Department (RDD) the natural rubber (NR) production of the country in 2018 was 82,560 tons showing about 1% decrease from the value recorded in 2017. Average yield per hectare was recorded as 774 kg/ha/year while it was 809 kg/ha/year in 2017. This could have attributed to the ignorance of rubber growers on on-farm activities associated with the decline in natural rubber price in the local market. Despite slight recovery of rubber prices in the year 2016, local and international rubber prices have shown a downward trend in the year 2017 and 2018. However, total NR consumption in the country has increased further reaching to a level of 135,237 tons showing about 5% improvement against the previous year. The rubber industry faces serious drawbacks in the supply side which may finally result in drastic effect on the flourishing rubber products manufacturing sector in the country.

##### ***Rubber extent***

Total rubber extent in the country at the end of 2018 has been recorded as 136.3 thousand hectares with about 75-80% of the extent under tapping. Accordingly, there has been 0.6% increase of land under cultivation over the values recorded in the previous year. This could mainly be attributed to 1,800 ha of new planting.

##### ***NR exports and imports***

According to Sri Lanka Customs, the country has exported only 13,982 tons of natural raw rubber in the year 2018 showing a decline from the value of 17,230 tons

recorded in 2017. Imports of NR have increased by 6.9% to 76,100 tons from the value of 71,200 ton in 2017. However, synthetic rubber imports have decreased by 4.7% to a 62,691 tons. Accordingly, there was an increase in total rubber imports indicating the development of the rubber product industry in the country.

#### ***Rubber manufacturing sector***

Earnings through raw rubber exports was Rs.5.1 billion in year 2018 against the Rs.5.9 billion in year 2017. Export earnings from finished products recorded a value of Rs.141 billion in 2018, showing an increase of about 11% against the previous year. Exports earnings from semi processed rubber remained at Rs.0.63 billion in 2018, while it was Rs.0.64 billion in the year 2017. Accordingly, total export earnings from the rubber industry remained at Rs.147.4 billion in 2018 showing 4.8% increase from the previous year.

#### **Global rubber industry review**

##### ***Natural rubber supply***

Total world NR production has appreciated by 4.8% from 13,310 thousand tons in 2017 to 13,960 thousand tons in 2018, according to statistics of the Association of NR Producing Countries (ANRPC). This would have had some association with the price improvements shown during the mid of the year in the major markets in Asia Pacific region.

##### ***NR average yield***

Despite the yield decline recorded in Thailand, China, India, Cambodia, Vietnam and Sri Lanka, yield per hectare has increased in Malaysia, Indonesia, and Philippine during 2018. The expansion in mature area in Thailand reflects the large scale planting undertaken during the period from year 2005 to 2012.

##### ***Global NR demand***

Total NR demand was estimated as 14,017 thousand tons in 2018 showing 5.3% increase over the value recorded in previous year. This increase could be accounted to economic growth in China, and USA as recorded as 6.5% and 2.8%, respectively during the year in concern. Accordingly, a deficit about 57,000 tons of NR was recorded; however, it has had no clear impact on the rubber price.

### ***World NR price movement***

Despite an increase in the year 2017, rubber price was generally in a declining trend in most of the international markets from 2011 to 2016. In 2018, this situation continued showing slight decrease in rubber prices compared to the values recorded in 2017. In Sri Lanka, annual average RSS 3 price was US\$ 2.20/kg in year 2017 and it decreased to US\$ 1.84/kg in 2018. In Bangkok, average price of RSS3 was recorded as US\$ 2.03 and 1.56 in respective years. Average price of Indian RSS4 has decreased to US\$ 1.84 from US\$ 2.09 per kg in the previous year. However in short term, global natural rubber prices are likely to appreciate due to stronger crude oil prices, growth in rubber product industry, increase Chinese demand and change in the position of US dollar, according to the ANPRC predictions.

### **Research focus**

Effect of the present crisis in the rubber price is more on rubber plantation industry in Sri Lanka. With low farm gate price for raw rubber and escalating cost of production particularly with high worker wages, farmers are reluctant to replant their senile rubber or going for new planting. There is a tendency to utilize rubber lands for other economic ventures in traditional growing areas and also a slow progress in expanding rubber cultivation in non-traditional areas. Therefore, research was focused more on resolving these issues than on research in academic interest. Research and development activities have targeted to increase not only the productivity of rubber but also the overall land productivity and farm income. Avenues for reducing the cost of production and efficient use of workers were at high level of consideration. Further, whilst supporting to expand rubber cultivation to new areas, projects were launched to remunerate the environmental benefits of rubber cultivation. For the benefit of both rubber growers and product manufacturers. For instance, developing and adopting good agricultural practices, low frequency harvesting systems, farming systems and voluntary carbon market were in focus. Technology transfer was geared more on strategic manner demonstrating easily adopted technologies for productivity improvements and reducing cost of production. Developing new rubber based products, encouraging SMEs in product manufacture and facilitating local rubber product industries to be competitive in international market with adequate testing facilities, have been streamlined. Among the research highlights, scientists of RRISL were able to secure a presidential merit award in the chemistry category for the patented mechano-chemical reclaiming process (Oreclaim) for ground rubber tyre.



Further, reusable porous fertilizer tube was developed for immature rubber plants to achieve high level of fertilizer use efficiency.

### **Obstacles for research**

Despite an appreciable level of research and development activities conducted with the support of all stakeholders, RRISL suffers from dearth of qualified senior scientists due to the fact that present remuneration packages are not attractive enough for such high caliber positions. Therefore, active involvement of all well-wishers of the rubber industry is expected to establish performance based remuneration packages to attract high caliber scientists to the institute.

### **Administrative and financial functions**

Change in the Chairmanship and Board of Directors towards the end of year, affected the overall management system of the institute showing some delays in procurement procedures. However, expected performance levels were achieved to a greater extent by the end of the year. In view of improving the human resource available, both local and international trainings were provided to the employees, particularly in research and technical categories in the institute. In total, 22 were sent abroad for the participation in training programmes, conferences and workshops in the countries; viz. Cambodia, China, India, Indonesia, Ivory Coast, Malaysia and Thailand, whilst 17 attended in local programmes. Further, few recruitments (06) were also made.

In view of minimizing the errors and improving the efficiency in financial management, the accounting system in the institute was fully computerized. Also, payroll system was computerized with paying salaries through banks. The problems associated with unaccounted profits in the Provident fund were cleared and monthly based interest calculating procedure was introduced with the computerized accounting system.

### **Appreciations**

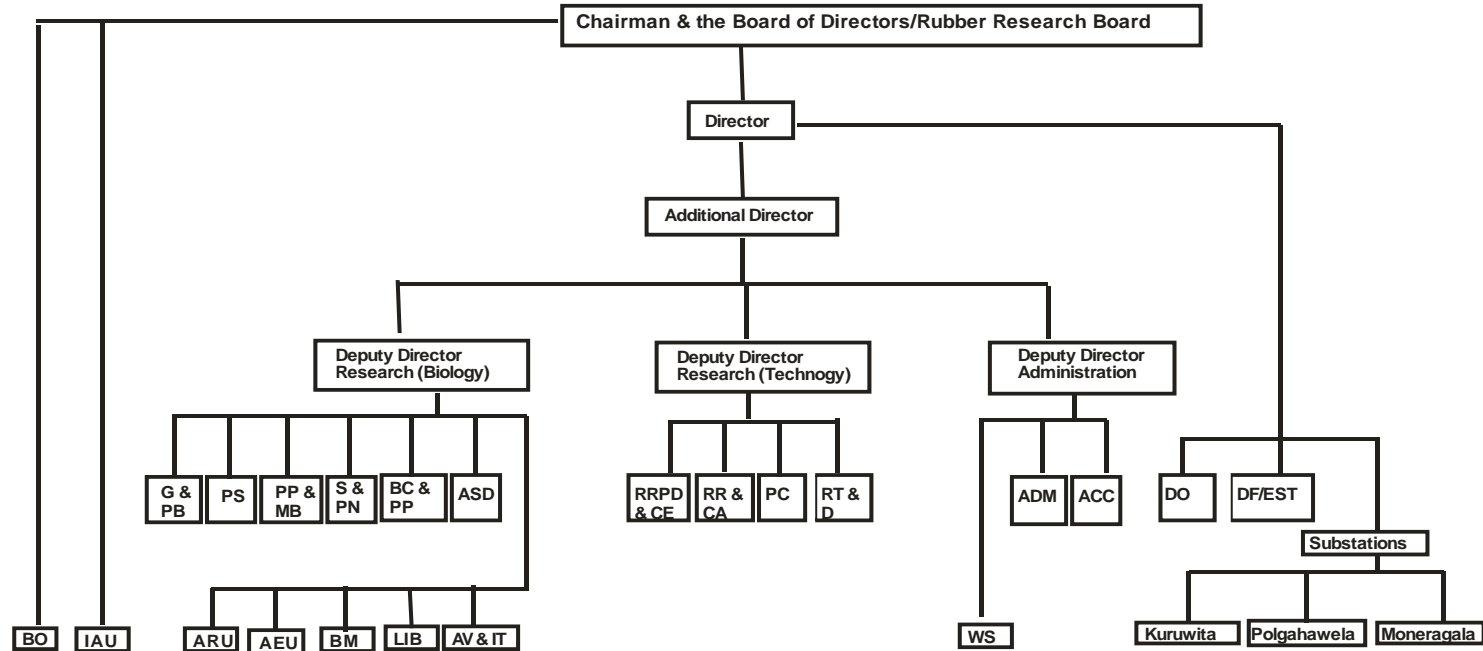
In effective conduct in R & D, the guidance and directions together with financial support and patronages given by the Rubber Research Board and the Ministry of Plantation Industries are appreciated. Other stakeholder support received in conducting R & D activities is well respected. The contributions made by Deputy Directors, all Heads of scientific and non-scientific divisions and other staff towards the Annual Report are acknowledged. In particular, special appreciations are given to the Economic Unit for providing required data for this review and to the staff in the

Library and Publication Unit for compiling the materials and finally building up the Annual Report 2018.

A handwritten signature in dark ink, appearing to be 'VHL', is positioned above a horizontal line.

Dr V H L Rodrigo  
Acting Director  
Rubber Research Institute

## ORGANIZATIONAL STRUCTURE



BO - Board Office  
 IAU - Internal Audit  
 DF/EST - Dartonfield Estate  
 ARU - Adaptive Research  
 LIB - Library & Publication  
 AV & IT - Audio Visual Inf. Tech.  
 WS - Works Section

G & PB - Genetics & Plant Breeding  
 PS - Plant Science  
 BC & PP - Biochemistry & Plant Physiology  
 RRPD & CE - Raw Rub. Proc. Dev. & Chem. Eng.  
 PC - Polymer Chemistry  
 BM - Biometry  
 ADM - Administration  
 DO - Director's Office

PP & MB - Plant Pathology & Microbiology  
 S & PN - Soils & Plant Nutrition  
 ASD - Advisory Services  
 RR&CA - Raw Rub. & Chemical Analysis  
 RTD - Rubber Technology & Dev.  
 AEU - Agricultural Economics  
 ACC - Accounts

## Major Achievements during 2018

---

- Single application of developed encapsulated coir bricks (ECB) and conventional type of fertilizer showed similar growth during the immature phase.
- Reusable porous fertilizer tube was developed for immature rubber plants, with maximum fertilizer use efficiency and minimum wastage (Fig.1)



**Fig. 1.** Application of porous fertilizer tube around the base of the immature rubber plants

- “Shaka Sara” liquid organic fertilizer was developed by using freely available organic materials, green manure, farm yard manure, crop residues, locally available ERP and Dolomite (Fig. 2 & 3).



**Fig. 2.** Preparation of “shaka sara” liquid organic fertilizer



**Fig. 3.** Application of liquid organic fertilizer (“shaka sara”) around the rubber plants

- Two soil maps relevant to rubber growing areas in Kalutara and Ratnapura districts were prepared and ten different soil series were identified.
- Polythene (Fig. 4) and shade net mulch (Fig. 5) as alternative weed management practices showed no weed regeneration around the base of immature plants up to 18 months of mulch establishment in the field.



**Fig. 4.** Polythene mulch application around the plant base



**Fig. 5.** Weed control under the shade net mulch

- Natural rubber (NR) composites were developed with surface treated fibres of the pineapple crown as well as areca nut husk with the aim of developing green rubber composites. Natural rubber (NR) based composites were prepared using plant based non-modified and modified *Moringa oleifera* crude
- A mechano-chemical reclaiming process was developed for natural rubber (NR) based carpet waste at the request of a large scale rubber product manufacturer and the technology was transferred to the company (Fig. 6)



**Fig. 6.** Development of reclaimed rubber according to a novel mechano-chemical reclaiming process

- Development of a non-conductive NBR based compound for grommet used in assembling of electric cables, SBR based compound for condenser end mount and wiring bunch bush and EPDM based compound for suction end mount on requests made by a private company engaged in assembling electrical components were transferred to the company



**Fig. 7.** Condenser end mount and wiring bunch bush and EPDM based compound for suction end mount

## Activities of Research Departments - 2018

---

### Agronomy departments/Sections/Units

#### GENETICS AND PLANT BREEDING DEPARTMENT

Nine new genotypes were produced in hand pollination programme carried out in the breeding garden at Neuchattle Estate. Four outstanding genotypes from 2011 hand pollinated progeny and selected HP (hand pollinated) entries were established at Eladuwa estate as estate collaborative manner. Around 1800 non-Wickham accessions were multiplied. Comprehensive data collection in Eladuwa 2009 ECT trial was continued with an objective of developing yield indexes for commercial scale clonal evaluation. Analysis of antioxidant gene expression in Tapping Panel Dryness (TPD) affected rubber tree, showed that Tapping Panel Dryness (TPD) affected laticifer tissues might run short of antioxidants mainly HbSOD antioxidant enzyme making the clone more likely to get Tapping Panel Dryness (TPD). Suitable yield parameters were detected from bark anatomy analysis for early selection of high yielding *Hevea brasiliensis* (Rubber) clones. Molecular and physiological screening were done to detect drought resistance of six selected *Hevea* clones using two genes through quantitative real time PCR.

#### PLANT SCIENCE DEPARTMENT

A significantly higher growth was recorded for seedlings raised from seeds sown in coir pith or elephant dung as compared to river sand. Experimental trials on different polybag sizes showed no differences in growth. Significantly higher growth and physio-chemical parameters were recorded from rubber plants treated with a bio stimulant (Moringa Leaf Extract) and a chemical (Sodium nitroprusside) under suboptimal climatic conditions in the dry and Intermediate Zones.

Bud wood nurseries of about 36 clones were established at Oleikanda (1,700 plants) and Dartonfield (360 plants). Daily latex yield and census of TPD were recorded for high density trial at Kuruwita. Two types of stumped budded plants were established at Moneragala. 64 nursery inspection programmes were done for nurseries belonged to RPCs, RDD and Private owners and about 950,000 plants were certified. Growth and physiological data were recorded for Rubber x Agarwood experiment in Dartonfield. Rubber and tea yields were recorded for Tea x Rubber intercropping trials. Canopy distribution measurements and census of rambutan were taken.

Intercropping trials were established with Rubber x fruit crops (Orange, Papaya, Custard Apple, Guava) and rubber x Cash crops (Thumba karavila, Thibbatu, and Ela batu) at Kilinochchi, Ampara and Moneragala.

There was no significant difference in yield obtained from plants treated with Moringa or banana leaf extracts on TPD affected or healthy trees in the fields at Padukka, Galewatta and Pitiakanda. Yield data were recorded for the clone RRISL 203 in Padukka in response to d2 or d3 tapping frequencies and winter rest experiments at Kuruwita and Moneragala. Data were recorded with respect to the latex volume and metrolac readings for bark consumption rate experiment in Kuruwita. Pre-treatment yield assessments for different tapping systems were done for the bark management and tapping experiment at Sirikandura. Issuing authentic budwood to establish budwood nurseries, issuing panel marking plates and testing polythine were attended. All nurseries were inspected for quality assurance and reports were submitted.

#### **PLANT PATHOLOGY AND MICROBIOLOGY DEPARTMENT**

Clonal screening programme towards the incidence of the secondary leaf fall diseases, Powdery mildew and Colletotrichum leaf disease showed mild conditions except for a few disease vulnerable sites. Based on the *Corynespora* screening programme, there were no new disease reports from the field plants. Incidence of *Phytophthora* disease was also mild during the year. *Corynespora* Leaf Fall Disease severity from the non traditional areas was comparatively higher. The studies on the biology of the population of *Rigidoporus* spp. the causative agent of white root disease of rubber under the NRC Grant 11-39 were completed. Experiments were in progress to test the effectiveness of tree injection against white root disease management. The antagonistic plants effective against *Rigidoporus* under *in vitro* conditions, were tested in the field. Studies on the biology of the pathogen population *Phellinus noxius* were undertaken due to the high incidence from non traditional rubber growing areas. Antagonistic fungi were identified from rubber growing areas to control the white root disease biologically. Talc was identified as a less bulky medium for the formulation of a biopesticide. Beneficial microbiological studies were initiated. Fungi and bacteria from different environments were isolated to maintain a national level culture collection. Thirty three training programmes were conducted to educate the growers on the effective management of white root disease. Six demonstration plots were established using the recommendations to demonstrate the efficacy of the new technologies.



## SOILS AND PLANT NUTRITION DEPARTMENT

Seven research activities on improvement of soil fertility, increasing fertilizer use efficiency, soil, water and nutrient conservation, weed control and one capital project on “Modification of fertilizer recommendations system of *Hevea* with reference to plant, soil and field parameters” were implemented and monitored during the year. New bacterial cultures associated with rubber rhizosphere were collected for the isolation of phosphorus solubilizing bacteria. Four bacterial cultures were identified as more effective than others for solubilizing  $\text{CaHPO}_4$  (Calcium Hydrogen Phosphate), HERP (Higher Grade Eppawala Rock Phosphate) and ERP (Eppawala Rock Phosphate). Combine uses of agro management practices such as cover cropping, mulching, green manuring and bio fertilizer application showed higher girth assessments of immature *Hevea* plants compared to the control treatment of normal estate practice. Moreover “Shaka Sara” (ශාක සාර) which was prepared by using freely available; green material, farm yard manure, crop residues and locally available ERP and Dolomite was prepared and measured its SLS (Sri Lanka Standard) parameters; pH, OC% (Organic Carbon), N% (Nitrogen),  $\text{P}_2\text{O}_5\%$ ,  $\text{K}_2\text{O}\%$ ,  $\text{MgO}\%$  and  $\text{CaO}\%$ . Application of inorganic mulch, polythene and shade net as alternative weed management practices showed no weed regeneration up to 18 months after their initiation. Application of two types of Encapsulated Coir Bricks (ECB) and conventional type of fertilizer gave almost identical growth performances; with reference to plant diameter and girth leaf macro nutrient; N (Nitrogen), P (Phosphorus), K (Potassium), Mg (Magnesium) and soil total N (Nitrogen) available. P (Phosphorus) exchangeable. Ca (Calcium) and pH values were also comparable. Moreover, significantly higher exchangeable K (Potassium) values were observed with ECB applications over the conventional type of fertilizer application. Application of environmental friendly alternatives for inorganic fertilizers; compost, vermi wash, vermi compost and partially burned paddy husk were re- tested. Different organic sources were tested to select the best medium for incubation of vermi cultures. Reusable porous fertilizer tube was developed with maximum fertilizer use efficiency and minimum wastage and their effectiveness was evaluated with immature rubber plants. Different fertilizer mixtures were tested in non traditional rubber growing areas in Moneragala, Mahaoya and Padiyatalawa and growth improvement could be observed with R/SA 7:9:9:3 and modified new fertilizer mixtures (R/SA based) treatments than the other mixtures. Moreover, plants in Monaragala area gave better growth than Mahaoya and Padiyathalawa areas. Two soil maps relevant to rubber growing areas in Ratnapura and Kalutara districts were prepared and ten different soil series were identified. Soil, plant and field parameters

collected from different soil series representing 12 estates in Kalutara district and five estates in Ratnapura district. Collected samples were analyzed for 2,250 parameters from 1,090 ha in Kalutara district and 1,246 parameters from 602 ha in Ratnapura district.

Site specific fertilizer recommendation programme provided 30 fertilizer recommendation reports for 5,246 ha of mature rubber. Four land suitability reports were issued for 150 ha under land selection programme. Analytical service offered 129 fertilizer reports including 1,581 parameters based on 440 fertilizer samples from outside organization to assure the application of good quality fertilizer for their rubber lands.

#### **BIOCHEMISTRY AND PHYSIOLOGY DEPARTMENT**

Physiological, biochemical and growth performance of selected ten genotypes were investigated in Pasyala, Vauniya, Kandakadu, Hambegamuwa and Padiyathalawa experimental fields to identify best suited genotypes for different agro-ecological zones. Planting was completed in the new site in Talawakele. S/2 d4 and S/4 d3 low intensity harvesting systems were introduced to 62.96 ha of smallholding and 45 ha of fields in RPCs. Effect of RRIMFLOW gaseous stimulation system on biochemical and physiological status of rubber tree was conducted in commercial plantations. Research & development on rubber latex to identify best genotypes that produce quality raw rubber during screening process was initiated. Research and development work was carried out to develop a protocol for local production of ethephon stimulant.

#### **ADVISORY SERVICES DEPARTMENT**

As a solution to tapper shortage, 338 new Harvesting Assistants were introduced through Tapper Training Schools (TTS) and 43 Semi-skilled Harvesting Assistants were trained to improve the technical quality in tapping. The extension strategy focused on farmer participatory development of selected rubber units in each REO divisions in traditional rubber growing areas was continued and 115 rubber lands were developed as model rubber holdings. Status of 22 immature and mature substandard rubber holdings were improved successfully. Thirty six rubber processing centers were developed as models and construction of 08 new RSS Processing centers and rehabilitation of 05 substandard centers were attended. Farmer training programmes were conducted to educate 350 rubber growers on general

cultivation and processing aspects of rubber. Also, 10 selected youth were trained as *Para Extension Service* providers on cultural practices of rubber farming.

Basic data and information were collected to develop selected villages as model rubber villages and action plans were prepared. Mapping of selected area for Rubber Techno Park (RTP) at Monaragala substation was done. Group extension programme called *Vihidum Sathkara* was effectively conducted providing advisory and extension services for 60 small land units in traditional rubber growing areas for necessary improvements. 372 advisory visits were carried out to solve problems in technology adoption on requests made by smallholders. One exhibition was conducted at Divisional Secretarial Office, Horana.

Involved as resource personnel in,

- 12 programmes on quality improvement of RSS (Ribbed Smoke Sheets), 12 farmer awareness programs and 06 harvesters training programs organized by Thurusaviya Fund
- 04 tapper tanning programs organized by Rubber Development Department
- 04 awareness programs for officers and 11 farmer awareness and training programs organized by STaRR project (Smallholder Tea & Rubber Revitalization) in Monaragala. Selection of suitable rubber lands to develop as models in Monaragala and Ampara districts under STaRR project (Smallholder Tea & Rubber Revitalization).
- 17 awareness and training programs for Economic Development Officers organized by Divisional secretarial offices and District secretarial office (Kegalle Rubber Umbrella)
- 02 awareness program for farmers and 02 awareness programs for students organized by ASR (Associate Specialty Rubber) Factory, Yatidariya.
- 02 awareness program for students as requested by University of Sabaragamuwa and Wayamba University of Sri Lanka.

### **BIOMETRY SECTION**

Research support on statistical analyses, *i.e.* designing, analyzing and interpretation of the research findings, were extended to other research departments. To provide a better service on the above, development and modifications of statistical methods was continuously focused in the research programme of the Biometry section to suit the needs of the rubber sector.

Several drought indices; namely, deciles, Standardized Precipitation Index (SPI) and Standard Precipitation and Evapotranspiration Index (SPEI) were employed in identification and characterization of droughts in nearly 40 stations in Sri Lanka under the project titled “Indicator based identification and forecasting of droughts in Sri Lanka” which is funded by the National Research Council (NRC) under the project climate change and variability which was completed in December 2018. The temporal variations and trends of rainfall anomalies were also studied for different rainfall seasons of the year, under this project.

AGROMET station at Dartonfield and Meteorological stations at Kuruwita and Moneragala were maintained and data were recorded and disseminated for research purposes. Rainfall data were collected and recorded from Nivithigalakele, Galewatta and Polgahawela substations in addition to the stations mentioned above.

Biometry Section and the Agricultural Economics Unit with the support of other research departments and the library organized an “International Workshop on Statistical Applications in Socio-economic Research which was attended by 08 IRRDB member countries and relevant local institutions for two days and then by an “International Forum on Current Socio-economic Issues and their Impact on Rubber Production Sector Performance” which was attended by 12 foreign participants representing IRRDB member countries and relevant local institutions on 3<sup>rd</sup> & 4<sup>th</sup> October 2018.

#### **ADAPTIVE RESEARCH UNIT**

Training programmes were conducted to educate farmers on latex harvesting and manufacturing of Ribbed Smoked Sheets at domestic level in Mahaoya Divisional Secretaries (DS) division of Eastern province and Vavuniya South Divisional Secretaries (DS) division of Northern Province in collaboration with Advisory Services Department. Latex harvesting was commenced in the firstly planted rubber fields in Harasgala Village of Mahaoya. In order to identify the feasibility for rubber cultivation, two farmer participatory adaptive research plots were established in Thalawa and Nuwaragam Palatha East Divisional Secretaries (DS) divisions of North Central Province.



Commencement of tapping at  
Mahaoya, Eastern province



Farmer participatory adaptive research  
plots at North Central Province

A survey was conducted in farmer communities of Padiyathalawa DS division of Eastern Province on their daily time allocation for different activities. Results revealed that leisure time of farmers have significantly increased with rubber cultivation allocating more time to interact with relatives, to attend religious activities and charity work. Also, time spent for community participation, community leadership and to interact with friends by rubber farmers have increased marginally. The study conducted to identify the suitable application frequency of animal repellent introduced by the Plant Pathology and Microbiology Department for smallholder rubber fields observed that six month application interval was most suitable for the Intermediate zone.

A survey is being continued to collect information on awareness, perceptions and adoption of rubber smallholders in Kegalle and Kurunegala districts.

#### **AGRICULTURAL ECONOMICS UNIT**

Financial Analysis of the profitability of rubber based intercropping systems is one of the main research areas of the Agriculture Economics Unit. Net Present Value (NPV), Benefit Cost Ratio (BCR), Internal Rate of Return (IRR) and Pay Back Period for the rubber cultivation under different scenarios were estimated in order to rank the farming systems according to financial indices. Further poverty analysis were conducted for farmers during immature stage of the rubber fields. Here Poverty Index's and Livelihood Development Index – Weighted sum of ranks will be explored for each farming system. Apart from that progress of raw rubber and finished rubber products sector will be examined using export and import custom data

with the aim of identifying trends and suitable import and export destinations for Sri Lankan rubber products. Preparation of Financial profitability and compensation reports for Smallholder rubber fields met with hazards is also one of the major activity conducted by the Unit.

#### **LIBRARY AND PUBLICATION UNIT**

The reference section of the Library was updated with seventy two text books increasing the total collection to 6,161 books.

Several institutional publications, namely Bulletin of the RRISL Vol. 53 (2016), Annual Review 2016, International Rubber Research and Development Board (IRRDB) Programme Book and Annual Reports – 2016 and 2017 were prepared.

#### **AUDIO VISUAL AND INFORMATION TECHNOLOGY UNIT**

Existing outdoor fiber optic network was extended to the new building of Accounts Department at Dartonfield office premises. Indoor computer network in the renovated area of Administration Department & Accounts Department were setup using UTP CAT6 cable.

Fiber optic internet connection was provided to the Finite Element Analysis & Simulation (FEAS) Centre which was newly established in the Ratmalana Office Premises. Also, the indoor computer network in the FEAS Centre was setup using UTP CAT6 cable. Outdated Finger Scanning System in the institute was replaced with new version.

Multimedia Projection System in the Main Auditorium was upgraded to improve the quality of Video & Audio and also, all the Audio Visual equipment installed in the main auditorium were properly maintained throughout the year.

Maintaining & troubleshooting Indoor/Outdoor Network, Computers & other hardware peripherals, Audio Visual equipment, PABX Systems (including database), managing the Finger Scanners (including data base), monitoring the internet access through Firewall Appliance, installing & troubleshooting all types of software applications and photography work of the institutional events were done throughout the year.

The process of redesigning the official website ([www.rrisl.lk](http://www.rrisl.lk)) was continued and was updated the website in English language under the instructions of the management. The necessary steps were taken to translate the website to Sinhala & Tamil languages.

Discussions were continued to get a suitable type of fiber optic internet connection for Dartonfield Office premises from Sri Lanka Telecom as a permanent solution for internet problem. Also, the necessary steps were taken to purchase Hardware Firewall from Sri Lanka Telecom Services for monitoring the internet access & other network usage.

Necessary steps were taken to get the telecommunication tower installed at Dartonfield office premises from Dialog Axiata PLC., for improving the Dialog 3G signal coverage.

Initial steps were taken to install the Indirect Surge Protection System with equipotential bonding system for Main & Sub Power Distribution Panels, Network Racks and PABX Telephone System.

## **Rubber Technology departments**

### **RUBBER TECHNOLOGY AND DEVELOPMENT DEPARTMENT**

Tested 142 sole crepe samples, 120 rubber compounds and 130 rubber products at the request of the rubber industry.

Twenty one SMEs, seven groups of students and two groups of teachers were trained on manufacture of NR based products. Also, training programs on “Rubber based products manufacture” were conducted for six large groups of SMEs. The staff was actively involved in arranging the RRISL stall at three exhibitions.

### **POLYMER CHEMISTRY DEPARTMENT**

Two commercially available nitrosoamine free accelerators were used to prepare dry rubber based compounds. The properties of the compounds were evaluated and compared with traditional accelerator systems.

The research project; *in-situ* filler incorporation of natural rubber latex was continued throughout the year. The developed latex films were characterized by Fourier Transform Infrared Spectrophotometer (FTIR), Thermo-gravimetric Analyzer (TGA),

and Scanning Electron Microscope (SEM) and confirmed the filler incorporation method was successful. The filler incorporated latex were compounded according to standard formulae and films of compounded latex were made. The properties of compounded-filler incorporated latex films were evaluated by means of physical testing (tensile and tear).

Preservative action of Natural Rubber (NR) latex with a novel commercially available preservative compound was further studied. The study confirmed that it is possible to reduce the amount of TMTD used in the conventional system by 80% when it is used along with the novel nano-compound.

More than thousand samples of polymer materials and compounding ingredients received from industry and academia were characterized using FTIR, TGA, DSC (Differential Scanning Calorimeter) and DMA (Dynamical Mechanical Analyzer) available at the department. Industrial solutions were also given based on the characterization results for the clients on request.

#### **RAW RUBBER AND CHEMICAL ANALYSIS DEPARTMENT**

The department is mainly cater to rubber industries, plantation sector as well as SME sectors by providing an internationally accepted testing facilities. The department offered the testing, analytical and certification services on raw natural rubber and rubber chemicals to all sectors of the rubber industry. These services were also extended to rubber traders, researchers from fellow departments of the institute and various local institutions such as Universities, other research institutes as well as individuals including postgraduate students, consultants and inventors *etc.*

A total number of four thousand four hundred sixty samples of natural rubber latex, dry rubber and rubber processing chemicals were tested for their quality during the year. This included 2,929 dry rubber samples, 1,460 latex samples and 72 rubber processing chemicals. In total 358 no test certificates were issued on requests received from the respective parties for their quality assessment and marketing purposes. In addition, the department carried out miscellaneous analytical tests, troubleshooting activities and two research projects during the year.

The department introduced new test methods for the determination of higher fatty acid content in centrifuged latex, the existing test method for the dirt content was modified with low cost solvent.



Raw rubber produced in Monaragala area was analyzed with comparison to wet zone. A new project was started to identify new chemical as a replacement for bleaching agent. An industrial collaborative project was started to find a solution for delamination problem in latex multilayer films. A case study was started to identify the probable effects of fumigation gas on raw rubber properties in cup lumps imported to Sri Lanka.

### **RAW RUBBER PROCESS DEVELOPMENT & CHEMICAL ENGINEERING**

A study was carried out to find out the potential of partial substitution of RSS from low-cost and protein rich skim crepe rubber in solid tire manufacture. A series of NR (Natural Rubber)/SBR (Styrene Butadiene Rubber) (80/20) composites were prepared replacing RSS from Skim crepe rubber by varying the skim crepe rubber percentage in the Natural Rubber phase from 0 (control) to 40% with 10% intervals while keeping the SBR content at a constant value. Curing characteristics, physico-mechanical and dynamic mechanical properties of the composites were measured according to the respective standard test methods. Based on overall results, it was found that 10% of RSS could be replaced from skim rubber in solid tire base compounds without any adverse effects on the performance of the product.

A health and environmental friendly method was introduced to manufacture skim crepe rubber with low nitrogen content and higher quality through removing protein in skim latex by simultaneous deproteinization action of pineapple Juice and creaming. This method might be a possible solution for removal of protein substances and unfavorable metal ions from skim latex while quality of skim crepe rubber is increased. This allows to get a competitive commercial value for skim crepe rubber obtained by this method (than conventional skim crepe rubber).

A series of experiments were conducted to improve further the quality of treated effluent water discharged from crepe and TSR (Technically Specified Rubber) factories by using flocculants. Conditions were optimized by varying flocculants dose and pH of medium to improve further quality of treated effluent water discharged from raw rubber factories.

A study was initiated to prepare and characterize of thermoplastic and skim natural rubber blends. Processing parameters including rotor speed, mixing cycle, temperature and ageing properties were determined for Skim/Plastic and TSR/Plastic blends having different ratios. Long-term and short-term processability of

unvulcanized and dynamically vulcanized Skim/Plastic and TSR/Plastic blends having different ratios were studied.

A new project was started to introduce nitrosamines free and REACH compliant novel preservative system for natural rubber latex preservation.

The staff of the department continued to provide routine technical assistance/ advisory, analytical services and conducted training programs for stakeholders and academia.

### **Estates own by RRI and Sub stations**

#### **DARTONFIELD GROUP**

A total crop of 178,535kg was harvested during the year providing 92.5% of the estimated crop with compared to the previous year, crop records an increase of 10.4%. The crop harvested on wet days due to the rainguards was 33,469kg which amount to 18.7% of total harvested crop.

Average yield per hectare (YPH) for the year was 1,003kg showing an increase of 86kg from the previous year.

The average intake per tapper recorded during the year was 8.0kg from a tapping task of 230 trees. Highest intake per tapper of 13.8kg was recorded from the 2010 field in 02<sup>nd</sup> year tapping with a tapping task of 316 trees of clone RRISL 203/2001 tapped on S/2 d4 tapping system with ethral.

The total number of normal, late, rainguard and no tapping days recorded during the year were 222, 06, 85 and 52 days, respectively.

Total rainfall recorded for year was 3,773.3mm with 195 wet days showing 295.7mm less and 07 wet days more from the values recorded in the previous year.

The Cost of Production (COP) and Net sale Average (NSA) recorded for the year was Rs.268.43 and Rs.255.44, respectively, giving a loss of Rs.12.99 per kg and a total of Rs.2.3 million. Loss per hectare recorded for the year was Rs.13,027.58. Quality level of grade 01 manufactured was 63% in crepe and 88% rip smoke sheet (RSS).

### **KURUWITA SUB – STATION**

The mature and immature extents of the Kuruwita Sub Station were 79.16 and 3.00 hectares, respectively.

A total crop of 81,148 kg was harvested during the year recording and decrease of 3,243 kg from previous year's crop.

Average yield per hectare (YPH) was 1,025 kg. The average intake per tapper (IPT) of the estate was 8.6kg showing a difference of only decrease 0.4kg from the previous year value.

The total number of normal, rainguard, rain interference and no tapping days recorded during the year were 232, 92, 0 & 41 respectively.

The annual rainfall recorded during the year was 4,560.80mm with 244 wet days as against 4,768.4mm with 246 wet days during the previous year.

The cost of production (C.O.P) and the Net Sale Average (N.S.A) for the year were Rs.279.36 and Rs.244.89 per kg, respectively. The loss made for the year was Rs.2.9 million and the loss per hectare recorded for the year was Rs.36,747.82.

### **POLGAHAWELA SUB - STATION**

A total crop of 14,710 kg has been harvested providing 77% of the estimated crop for the year. This was 92% more from the value recorded in previous year.

Average yield per hectare (YPH) for the year was 1,070kg.

The average intake per tapper during the year was 10.72kg. The highest intake per tapper of 11.88kg was recorded from the field planted in 2006 with a tapping task of 216 trees of clone RRIC 121 tapped on S/2d2 and S/2d3 systems.

The total number of normal, late, and no tapping days during the year were 263, 29 & 73 respectively.

The annual rainfall recorded during the year was 2,683.7mm with 153 wet days as against 1,974mm with 164 wet days during the previous year.

Out of the total manufactured RSS, the share of No.01 grade was 82%.

### **MONERAGALA SUB - STATION**

All demonstrational plots, experimental trials and nurseries were maintained by the staff of the substation, under the instruction of research departments. Intercropping trials at present consist of cinnamon, cocoa, mango, guava, pomegranate, rumbutan, drumsticks, cane *etc.* Budwood nurseries and the young budding nursery were maintained. Moringa plants were planted at boundaries of the substation. Gliricidia plants planted in 2016 in boundaries were also pollarded and vacancies were replanted. Training programmes were conducted for smallholder farmers, University students and other trainees with the support of Advisory Services Department and Funds from Thurusaviya and STARR projects.

Among the programmes conducted, training on harvesting, immature upkeep, all agronomic practices and rubber processing were at high demand. Marking plates and rubber tapping knives were also issued to stakeholders.

## Awards

---

- Presidential merit award in the “Chemistry” category was received for the patented mechano-chemical reclaiming process (Oreclaim) for ground rubber tyre developed using a natural product.



- Dr. N.M.C. Nayanakantha, Head of Plant Science Department of RRISL, received an Award for the “Best Oral Presenter” for his paper entitled” Assessment of growth and bud-grafting performance of selected clonal seedling rootstocks of rubber (*Hevea brasiliensis*), under the technical session of “Crop Production and Protection, at the First International Symposium on Agriculture, Eastern University, Chenkalady, Batticaloa.



## **Board of Management, Committees & Staff Members**

---

### **RUBBER RESEARCH BOARD OF SRI LANKA**

#### **BOARD OF MANAGEMENT**

##### ***Members appointed by the Hon Minister of Plantation Industries***

01. Mr N V T A Weragoda, Chairman, Rubber Research Board (up to 29.10.2018)
02. Mr J R Godigamuwa, Chairman, Rubber Research Board (w.e.f. 11.09.2018)
03. Ms M K D N Madampe, Treasury Representative
04. Mr R A D S Ranatunga, Representative, Ministry of Plantation Industries
05. Mr Justin Seneviratne, Group Director, Lalan Rubber (Pvt) Ltd
06. Mr R C Peiris, Chief Executive Officer, Kotagala Plantation PLC
07. Mr Anusha Perera, Chief Executive Officer, Balangoda Plantation PLC
08. Dr J D H Wijewardana, Secretary/Director, Sri Lanka Council for Agricultural Research Policy
09. Mrs N M Thanthirige (w.e.f. 28.08.2018 up to 29.10.2018)
10. Mr K H M Ranbanda Herath (up to 29.10.2018)
11. Mr E G S Premachandra (up to 29.10.2018)
12. Mr V S Dickwella (w.e.f. 26.09.2018 up to 29.10.2018)

##### ***Ex-Officio Members***

01. Mr R B Premadasa, Director General, Rubber Development Department
02. Mr S S Poholiyadda, Managing Director, RPC Plantation Management Services

#### **STANDING COMMITTEES**

##### ***Estates Committee***

01. Mr N V T A Weragoda, Chairman, Rubber Research Board (up to 29.10. 2018)
02. Mr J R Godigamuwa, Chairman, Rubber Research Board (w.e.f. 11.09.2018)
03. Dr W M G Seneviratne, Director, Rubber Research Institute (up to 18.11.2018)
04. Dr V H L Rodrigo, Additional Director, RRI
05. Dr (Mrs) P Seneviratne, Deputy Director – Research (Biology), RRI
06. Dr Susantha Siriwardena, Deputy Director – Research (Technology), RRI
07. Mr Nissanka Seneviratne, Director, Kotagala Plantations Ltd.
08. Mr Jagath Hettiarachchi, Senior Manager, Paiyagala Estate
09. Mr Prince Gunasekera, General Manager, Namunukula Plantations Ltd.
10. Mr P A Lakshman, Senior Manager, Dartonfield Estate
11. Mr B S S Hewage, Senior Accountant, RRI
12. Mr Ajith Withanage, Deputy Director (Administration) (up to 02.05.2018)

### ***Audit and Management Committee***

01. Ms M K D N Madampe, Chairman of the Committee, Treasury Representative
02. Mr R B Premadasa, Director General, Rubber Development Department
03. Mr R A D S Ranatunga, Representative, Ministry of Plantation Industries

### ***In attendance***

01. Ms Nilani Jayasiri, Audit Superintendent, Ministry of Plantation Industries
02. Director, Rubber Research Institute (up to 16.11.2018)
03. Acting Director, Rubber Research Institute (w.e.f. 06.12.2018)
04. Mr S Hewage, Senior Accountant, RRI
05. Ms S Senadheera, Internal Auditor, RRB
06. Mr Ajith Vithanage, Deputy Director (Admin) (up to 02.05.2018)
07. Mr Susantha Dissanayake, Senior Administrative Officer (w.e.f. 03.05.2018)

### ***Scientific Committee***

#### ***Members of RRISL***

01. Mr N V T A Weragoda, Chairman, Rubber Research Board (up to 29.10.2018)
02. Dr W M G Seneviratne, Director, Rubber Research Institute (up to 17.11.2018)
03. Dr V H L Rodrigo, Additional Director, RRI
04. Dr (Mrs) G P W P P Seneviratne, Deputy Director Research (Biology), RRI
05. Dr S Siriwardena, Deputy Director Research (Technology), RRI
06. Dr D M A P Dissanayake, Head, Advisory Services Dept., RRI
07. Dr (Mrs) D G Edirisinghe, Head, Rubber Technology & Development Dept., RRI
08. Dr (Mrs) S P Withanage, Head, Genetics & Plant Breeding Dept., RRI
09. Dr (Mrs) B W Wijesuriya, Principal Research Officer, Biometry Section, RRI
10. Dr N M C Nayanakantha, Head, Plant Science Dept., RRI
11. Dr (Mrs) T H P S Fernando, Principal Research Officer, Plant Pathology & Microbiology Dept., RRI
12. Dr (Mrs) E S Munasinghe, Principal Research Officer, Adaptive Research Unit, RRI
13. Dr (Mrs) K V V S Kudaligama, Senior Research Officer, Biochemistry & Physiology Dept., RRI
14. Dr (Mrs) R P Hettiarachchi, Senior Research Officer, Soils & Plant Nutrition Dept., RRI
15. Mrs A P Attanayake, Senior Research Officer, Raw Rubber & Chemical Analysis Dept., RRI
16. Mr K K Liyanage, Senior Research Officer, Genetics & Plant Breeding Dept., RRI
17. Mr T U K Silva, Senior Research Officer, Plant Science Dept., RRI
18. Mrs B M D C Balasooriya, Research Officer, Adaptive Research Unit, RRI
19. Mrs D S A Nakandala, Research Officer, Plant Science Dept., RRI

20. Mrs M K R Silva, Research Officer, Plant Pathology & Microbiology Dept., RRI
21. Mrs P V A Anushka, Research Officer, Genetics & Plant Breeding Dept., RRI
22. Mr W D M Sampath, Research Officer, Rubber Technology & Dept., RRI
23. Mr P K K S Gunaratne, Advisory Officer, Advisory Services Dept., RRI
24. Mr R A D Ranawake, Advisory Officer, Advisory Services Dept., RRI
25. Mr J K S Sankalpa, Research Officer, Agricultural Economics Unit, RRI
26. Mr K Adikari, Research Officer, Raw Rubber & Chemical Analysis Dept., RRI
27. Mrs I H K Samarasinghe, Research Officer, Polymer Chemistry Dept., RRI
28. Mrs T T Tolshi Dahanayake, Research Officer, Genetics & Plant Breeding Dept., RRI
29. Miss B M Suboda Panditharatne, Research Officer, Plant Science Dept., RRI (up to 12.10.2018)
30. Mrs L H Samudra Gunaratne, Research Officer, Plant Pathology & Microbiology Dept., RRI
31. Mrs H A Ruwani Jayawardane, Research Officer, Soils & Plant Nutrition Dept., RRI
32. Miss N P Surani Karunaratne, Research Officer, Biochemistry & Physiology Dept., RRI
33. Miss P G N Ishani, Research Officer, Agricultural Economics Unit, RRI
34. Mr Yashoda Somaratne, Research Officer, Polymer Chemistry Dept., RRI
35. Mr Y C Yohan Sudusinghe, Research Officer, Raw Rubber Process Development & Chemical Engineering Dept., RRI
36. Mr P A Lakshman, Senior Manager, Dartonfield Estate

*Members representing the Industry and other Institutions*

01. Dr K De Silva, Director, Thurusaviya Fund, No 74, Kaduwela Road, Battaramulla
02. Dr P Dharmasena, Director, National Institute of Plantation Management, M D H Jayawardane Mw, Athurugiriya
03. Mr A I B Rajasinghe, Superintendent, Balangoda Plantations PLC, Palmgarden Estate, Rathnapura
04. Mr D K Wijerathne, Superintendent, Balangoda Plantations PLC, Rambukkande Estate, Rathnapura
05. Mr B L L Premathilake, Superintendent, Balangoda Plantations PLC, Mahawala Estate, Rathnapura
06. Mr A G Geeth Kumara, General Manager, Elpitiya Plantations PLC, Talgaswella Estate, Talgaswella
07. Mr J N Hettiarachchi, Senior Manager, Kotagala Plantations PLC, Paiyagala Estate, Dodangoda
08. Mr R Tennakoon, Senior Manager, Kotagala Plantations PLC, Padukka Estate, Padukka



09. Mr B Gunasekara, RGM, Kelani Valley Plantations PLC, Panawatte Estate, Yatiyantota
10. Mr S Fernando, RGM, Kelani Valley Plantations PLC, Dewalakande Estate, Dehiowita
11. Mr R L Obesekare, Manager, Kelani Valley Plantations PLC, Kiriporuwa Estate, Yatiyantota
12. Mr E M R B Ratnayake, Manager, Kelani Valley Plantations PLC, We oya Estate, Yatiyantota
13. Mr P K A H Thilakarathne, Manager, Kelani Valley Plantations PLC, Yatiyantota
14. Mr B M J A Moonamalle, Superintendent, Kegalle Plantations PLC, Weniwella Estate, Alauwa
15. Mr S D G Hewagama, Kahawatte Plantations PLC, Hunuwella Estate, Openayake
16. Mr L Perera, Manager, Kahawatte Plantations PLC, Houpe Estate, Kahawatte
17. Mr G Weeraseskara, Manager, Kahawatte Plantations PLC, Opatha Estate, Kahawatte
18. Mr M H P Gunarathne, Superintendent, Maturata Plantations PLC, Andapana Estate, Kamburupitiya
19. Mr B Madagama, Superintendent, Maturata Plantations PLC, Wilpita Estate, Akuressa
20. Mr D U H Bulugahapitiya, Senior Manager, Malwatte Valley Plantations PLC, Talgaswella Estate, Talgaswella

***Provident Fund Committee***

01. Mr N V T A Weragoda, Chairman, Rubber Research Board (up to 29.10.2018)
02. Mr J R Godigamuwa, Chairman, Rubber Research Board (w.e.f. 11.09.2018)
03. Dr W M G Seneviratne, Director, Rubber Research Institute (up to 17.11.2018)
04. Mr Ajith Withanage, Deputy Director (Administration) (up to 02.05. 2018)
05. Mr D M S Dissanayake, Senior Administrative Officer
06. Mr B S S Hewage, Senior Accountant, RRI (Member)
07. Mr T B Dissanayake, Elected Committee Member
08. Mr R A D Ranawaka, Elected Committee Member
09. Mr P K K S Gunarathna, Advisory Officer, Elected Committee Member

***Chairman's Office & Board Secretariat***

Chairman	- Mr N V T A Weragoda (up to 29.10.2018)
	- Mr J R Godigamuwa (w.e.f. 11.09.2018)
Acting Secretary to the Board	- Dr (Mrs) Wasana Wijesuriya, PRO
Personal Assistant to the Chairman	- Mrs B H P Balasuriya
Management Assistants	- Mrs H N Kanchana
	- Mrs P S Ishara

**Lawyers**

Attorney General  
Attorney General's Department  
(Government Institutions)  
P O Box 502  
Colombo 12

**Bankers**

Bank of Ceylon  
Corporate Branch  
75, Janadhipathi Mawatha  
Colombo 1

**Auditors**

Auditor General  
Auditor General's Department  
No.306/72, Polduwa Road,  
Battaramulla

Bank of Ceylon  
No.306/72,  
Agalawatta

**Contact details:****Head Office and Laboratories**

*Dartnfield, Agalawatta*

**Telephones:**

Director	034 - 2248457
Additional Director	034 - 2248458
Deputy Director Research (Biology)	034 - 2295610
General	034 - 2247426
	034 - 2247383
	034 - 2295540
	034 - 2248459
	034 - 2247427
Fax:	<a href="mailto:dirrri@sltmet.lk">dirrri@sltmet.lk</a>
e-mail	
Website	<a href="http://www.rrisl.gov.lk">www.rrisl.gov.lk</a>

**Board Office and Rubber Chemistry & Technology Laboratories**

*Telewela Road, Ratmalana*

**Telephones:**

Chairman	011 - 2635019
Fax	011 - 2633353
Fax (Admin)	011 - 2635142
Director	011 - 2633351
Fax	011 - 2633351
Deputy Director Research (Technology)	011 - 2633352
General	011 - 2635851
	011 - 2635852

Fax:  
*e-mail*

011 - 2605171  
*[dirrub@sltnet.lk](mailto:dirrub@sltnet.lk),*  
*[rubberreseach@gmail.com](mailto:rubberreseach@gmail.com)*

***Sub stations***

**Nivitigalakele - Substation, Matugama**  
Genetics and Plant Breeding Department  
Telephone: 034 - 2247368, 034 - 2247199  
e-mail: [rrigpb@sltnet.lk](mailto:rrigpb@sltnet.lk)

**Kuruwita - Substation, Ratnapura**  
Telephone: 045 - 2262115, 045 - 3460537  
e-mail: [rrikuruwita@sltnet.lk](mailto:rrikuruwita@sltnet.lk)

**Polgahawela - Substation, Polgahawela**  
Telephone: 037 - 2244120

**Monaragala - Substation, Monaragala**  
Telephone: 055 - 3600707

Website: [www.rrisl.lk](http://www.rrisl.lk)

## RUBBER RESEARCH INSTITUTE OF SRI LANKA

### STAFF

#### DIRECTORATE

<i>Director</i>	W M G Seneviratne, BSc (SL), PhD (Sussex) (up to 17.11.2018)
<i>Additional Director</i>	V H L Rodrigo, BSc Agric (SL), MSc (Essex) PhD (Wales)
<i>Deputy Director Research (Bio.)</i>	Mrs G P W P P Seneviratne, BSc (SL), PhD (Bath)
<i>Deputy Director Research (Tech.)</i>	S Siriwardene, BSc (SL), MSc (Australia) PhD (Malaysia)
<i>Deputy Director (Administration)</i>	Ajith Withanage, BLE, MHRM, EDBA (up to 02.05.2018)

#### RESEARCH DEPARTMENTS

##### Agronomy departments

<b>Genetics and Plant Breeding</b>	<i>(at Nivithigalakele Substation, Matugama)</i>
<i>Head of Department</i>	Mrs S P Withanage, BSc Agric (SL), MSc (India), PhD (Malaysia)
<i>Senior Research Officer</i>	K K Liyanage, BSc Agric (SL) MPhil (SL)
<i>Research Officers</i>	Mrs P V A Anushka, BSc Agric (SL) Mrs T T D Dahanayake, BSc Agric (SL)
<i>Experimental Officers</i>	I D M J Sarath Kumara (up to 04.10.2018) T B Dissanayake T M S K Gunasekera H P Peries, Dip. Agric (Kundasale)
<i>Technical Officers</i>	Mrs A K Gamage, BSc (SL)
<i>(Research &amp; Development)</i>	B W A N Baddewithana, BSc Agric. (SL) Miss W D A R Tharanga, BSc (SL) (up to 24.08.2018) Mrs Y S L Kumaranayake, BSc (SL) (up to 01.09.2018)
<i>Management Assistants (Clerical)</i>	Mrs S D P K L Peiris
<b>Plant Science</b>	<i>(at Dartonfield, Agalawatta)</i>
<i>Head of Department</i>	N M C Nayanakantha, BSc (SL), MSc (India), PhD (India)
<i>Senior Research Officer</i>	T U K Silva, BSc Agric (SL), MPhil (SL)

<i>Research Officers</i>	Mrs D S A Nakandala, BSc Agric (SL) Miss B M S S Panditharatne, BSc Agric. (SL) (up to 12.10.2018)
<i>Experimental Officers</i>	Mrs G A S Wijesekera Mrs R K Samarasekera W D M N de Alwis, BSc (SL) D L N de Zoysa P D Pathirana, BSc (SL) P K W Karunathilake, Dip. Agric (Ratnapura) R Handapangoda, BSc Agric (SL) Mrs U Dissanayake, Dip. in Agric. (Naiwala) BSc (SL) Miss W K S W Watawala, BSc (SL) R P D Priyadharshana, BSc (SL) Miss H M Subsinghe, BSc (SL) Mrs U N Udaya Kumari, BSc (SL)
<i>Technical Officers (Research &amp; Development)</i>	
<i>Management Assistants (Clerical)</i>	Mrs H D D E Jayawardena Mrs Aruni de Almeida
<b>Plant Pathology and Microbiology</b>	<i>(at Dartonfield, Agalawatta)</i>
<i>Head of Department</i>	Mrs T H P S Fernando, BSc (SL), MPhil (SL), PhD (SL) (from 19.06.2018)
<i>Research Officers</i>	Mrs M K R Silva, BSc Agric (SL), MSc (SL) Mrs L H S N Gunaratne, BSc Agric (SL)
<i>Experimental Officers</i>	Mrs B I Tennakoon, Dip. Agric (Kundasale) Mrs E A D D Siriwardene, BSc (SL) S C P Wijayarathne, NDT Agric (Hardy) E A D N Nishantha, Dip. Agric. (Ratnapura), BIS (Agric) (SL) (from 01.10.2018)
<i>Technical Officers (Research &amp; Development)</i>	P W Balasooriya, BSc (SL)
<i>Management Assistant (Clerical)</i>	Miss R D N S Gunasekera, Dip. in Agric. Mrs K A D Y Madushani Lanka
<b>Soils and Plant Nutrition</b>	<i>(at Dartonfield, Agalawatta)</i>
<i>Principal Research Officer</i>	Mrs R P Hettiarachchi, BSc (SL), MPhil (SL), PhD (SL) (from 17.12.2018)
<i>Research Officer</i>	Mrs H A R K Jayawardana, BSc Agric. (SL)
<i>Experimental Officers</i>	Miss V U Edirimanne, BSc (SL) Miss A P Thewarapperuma P D T C Gunatilleke, NDT (Agric) J A Sarath Chandrasiri

<i>Technical Officers (Research &amp; Development)</i>	Mrs Eranga de Silva, NDT C G Mallawaarachchi, Dip. in Agric. (Hardy) Mrs M Kulathunga, BSc (SL) Mrs R M Baddevidana, BSc (SL) Mrs P D S D O Rathnasooriya, BSc (SL) M H W Gayan, BSc (SL) S L N S L Madushanka, BSc (SL) (up to 14.05.2018) Mrs N S Siriwardena, BSc (SL) Mrs K A D L Rupasinghe Perera
<i>Management Assistant (Stenography)</i>	
<b>Biochemistry and Physiology</b> <i>Principal Research Officer</i>	<i>(at Dartonfield, Agalawatta)</i> Mrs K V V S Kudaligama, BSc (SL), MPhil (SL), PhD (SL) (from 17.12.2018) Miss N P S N Karunaratne, BSc (SL) M K P Perera, BSc (SL)
<i>Research Officer</i>	Mrs P A D T L Madushani, Diploma in Agric.
<i>Experimental Officers</i>	Miss N N Abewardena, BSc (SL) (up to 05.11.2018)
<i>Technical Officers (Research &amp; Development)</i>	Mrs H A Manoji Erandika
<i>Management Assistant (Clerical)</i>	
<b>Advisory Services</b> <i>Head of Department</i>	<i>(at Telewela Road, Ratmalana)</i> D M A P Dissanayake, BSc Agric. (SL) PhD (Aberdeen)
<i>Advisory Officers</i>	P K K S Gunaratne, BSc Agric. (SL) R A D Ranawaka
<i>Assistant Training Officer</i>	Miss K G P Manahari, BSc (SL)
<i>Rubber Extension Officers</i>	R M S Ratnayake, NDT Agric. (Hardy) D E P M Nanayakkara, Dip. Agric. (Aquinas) M Dharmadasa, BSc (SL), MSc (SL) E G U Dhanawardena (up to 10.03.2018) Nihal Gamage, Dip. Agric. (Angunakolapelessa) G D N Seneviratne (up to 07.09.2018) S G G Wijesinghe I P L Kithsiri W M A S L Wanigasuriya, Dip. Agric. (Aquinas) (up to 27.04.2018) N L Dharmasena (up to 22.12.2018) W P G D C P K Senanayake, NDT Agric. (Hardy) T L Ramanayake, BSc (SL) A R Kulathunga, BSc (SL) H G M G Jayasinghe, BSc (SL)

<i>Rubber Extension Officers</i>	K D K L Siriwardena, BSc (SL) S G Hewanambikanda, BSc (SL) (up to 28.06.2018)) Miss K K I Jayasundera, BSc (SL) D S Dissanayake, BSc (SL) Mrs G R Tennakoon, BSc (SL)
<i>Experimental Officer</i>	S M A Samarakoon, Dip. Agric. (Kundasale)
<i>Management Assistants (Clerical)</i>	Mrs C Gunatilleke Mrs J N R Jayasinghe R G A S Dharmaratne Mrs S M Kaluarachchi T R C Silva Mrs K Y G M P Kumari, BA (SL)

## **Technology departments**

### **Rubber Technology and Development** *(at Telewela Road, Ratmalana)*

<i>Head of Department</i>	Mrs D G Edirisinghe, BSc (SL), MSc (SL) MPhil (UK), PhD (SL)
<i>Research Officer</i>	W D M Sampath, BSc (SL)
<i>Experimental Officers</i>	Mrs S I Yapa, Dip. Rubber Tech. (PRI) (up to 10.12.2018) S L G Ranjith, Dip. Rubber Tech. (PRI), BSc (SL) P L Perera (up to 24.01.2018) Mrs G M Priyanthi Perera, BSc (SL), MSc (SL)
<i>Technical Officers (Research &amp; Development)</i>	V G M J Abeywardena, NDT Miss S G P Bhagayawedha, NDT K I D P Perera, BSc (SL) Miss P K I L Jayaratne, BSc (SL) P D A Gunasekera, BSc (SL) (up to 18.08.2018)
<i>Management Assistant (Clerical)</i>	Miss S M D S R de A Wijeratne

### **Polymer Chemistry**

<i>Research Officer</i>	<i>(at Telewela Road, Ratmalana)</i> Mrs I H K Samarasinghe, BSc (SL) Y R Somaratne, BSc (SL)
<i>Experimental Officer</i>	Mrs N Jayawardane, Dip. Agric. (Bibile)
<i>Technical Officers (Research &amp; Development)</i>	Mrs H M H Dhanukamalee, BSc (SL) Miss P S V Rupasinghe, BSc (SL) D V D Mallikarachchi, BSc (SL) Miss H L T Tharaka, BSc (SL)
<i>Management Assistant (Clerical)</i>	N W E C Maduranga

**Raw Rubber and Chemical Analysis** *(at Telewela Road, Ratmalana)*

<i>Senior Research Officer</i>	Mrs A P Attanayake, BSc (SL), PhD (SL)
<i>Research Officer</i>	A M K S P Adikari, BSc (SL), MPhil (SL)
<i>Experimental Officers</i>	Mrs H V K Gamage Mrs C S Lokuge Miss D M S Wijesekera, Dip. Rubber Tech. (PRI) L P P Vitharana
<i>Technical Officers (Research &amp; Development)</i>	Miss S P Wijewardena, BSc (SL) Miss N C Y Kithmini, BSc (SL) Miss M U D S Weerasinghe, BSc (SL) H D M S Wijewardena, BSc (SL) K A S T Koswatta, BSc (SL)
<i>Management Assistant (Clerical)</i>	Miss W D D Samanmali

**Raw Rubber Process Development and Chemical Engineering***(at Telewela Road, Ratmalana)*

<i>Research Officer</i>	Y C Y Sudusinghe, BSc (SL)
<i>Experimental Officers</i>	Mrs W K C Nalinie, Dip. Rubber Tech. (PRI) Mrs U M S Priyanka, BSc (SL), MSc (SL) Mrs V C Rohanadeepa A K D W Prasad
<i>Technical Officers (Research &amp; Development)</i>	R D Illeperuma, BSc (SL) Miss P K N N Sandamali, BSc (SL) W R U de Silva, Dip. in Chem.
<i>Management Assistants (Clerical)</i>	Miss H A Janani Lakshika, BA (SL) Miss P D S Dilhani

**Sections/Units****Biometry Section***(at Dartonfield, Agalawatta)*

<i>Principal Research Officer</i>	Mrs B W Wijesuriya, BSc Agric (SL), MPhil (SL), PhD (SL)
<i>Experimental Officers</i>	Mrs H K D C S Munasinghe, NCT Polymer (Moratuwa), Dip. Rubber Tech. (PRI), Dip. Computer Science (IDM) O V Abeyawardene, Dip. Agric. (Kundasale)
<i>Management Assistant (Clerical)</i>	Mrs S N Munasinghe

**Adaptive Research Unit***(at Dartonfield, Agalawatta)*

<i>Principal Research Officer</i>	Mrs E S Munasinghe, BSc Agric (SL), PhD (SL)
<i>Research Officer</i>	Mrs B M D C Balasooriya, BSc Agric (SL)



<i>Technical Officers (Research &amp; Development)</i>	P M M Jayatilleke, NDT (Agric.)
<i>Management Assistant (Clerical)</i>	Mrs N M Piyasena, Dip. in Agric. Mrs M A Randima Srimalee
<b>Agricultural Economics Unit</b>	<i>(at Dartonfield, Agalawatta)</i>
<i>Research Officers</i>	J K S Sankalpa, BSc (SL), MSc (SL) Miss P G N Ishani, BSc Agric. (SL)
<b>Library and Publications Unit</b>	<i>(at Dartonfield, Agalawatta)</i>
<i>Librarian &amp; Publication Officer</i>	Mrs N C D Wijesekara, BA (SL)
<i>Library Assistant &amp; Assistant Publication Officer</i>	Mrs R M Amaratunga, Intermediate; Lib. Sci. Doc. & Info. (SLLA)
<i>Library Assistant &amp; Publication Assistant (Ratmalana)</i>	Mrs D N C Amarathunga
<i>Management Assistants (Clerical)</i>	P M P Jayantha
<b>Audio Visual and Information Technology Unit</b>	<i>(at Dartonfield, Agalawatta)</i>
<i>Network Administrator</i>	S R D C P Peiris, BSc (SL)
<b>Management Divisions</b>	
<b>Administration Department (Agalawatta)</b>	<i>(at Dartonfield, Agalawatta)</i>
<i>Senior Administrative Officer</i>	D M S Dissanayake, BSc (Mgt.) (SL), MHRM (SL)
<i>Registered Medical Practitioner</i>	M Subasinghe
<i>Administrative Officer</i>	Mrs P Mandalawatta (Dip. in HRM)
<i>Management Assistants (Clerical)</i>	Mrs P W Neelamanie Mrs J A D Wijayanthi Mrs B D Niranjala Mrs O W D Namali Udayanthi Mrs P C Athukorala Mrs Thamosha Munasinghe Mrs O W D Nilusha Udayanthi Mrs M N D Perera Mrs B Chandralatha, BA (SL) Miss M G L Niroshani Mrs J A H S Kumari
<i>Management Assistant (Stenography)</i>	
<i>Telephone Operator</i>	Mrs J A D C Preethika

<b>Administration Unit (Ratmalana)</b>	<i>(at Telewela Road, Ratmalana)</i>
<i>Administrative Officer</i>	Mrs U K Akila Tharinduni, BSc (SL)
<i>Management Assistants (Clerical)</i>	A T Senaratne
	Mrs A R M de Alwis
	Mrs K A Geetha, BA (SL)
<i>Telephone Operator</i>	Miss G D D Kalamini
 <b>Internal Audit Unit</b>	 <i>(at Dartonfield, Agalawatta)</i>
<i>Internal Auditor</i>	Mrs M S I Senadeera, IFA, IPFA, IRCA, LICA,FPFA,PGDM
<i>Management Assistants (Clerical)</i>	M A D W K Tilakeratne
	Mrs W L Sunali Shashikala BA (SL)
 <b>Works Section</b>	 <i>(at Dartonfield, Agalawatta)</i>
<i>Resident Engineer</i>	K A D K Chathuranga, BSc (Eng.) (from 23.06.2018)
<i>Engineering Assistant</i>	Mrs W D D Prasadini, NDES
<i>Technological Officer (Civil)</i>	M A D K Jayasumana, NCT
<i>Transport Officer</i>	U L D R L Gunasinghe
<i>Technological Officer (Mech.)</i>	H J P Fernando, HNDE
<i>Management Assistants (Clerical)</i>	Mrs K C S Jayaweera
	Mrs J A S Dharshanie (Dip. in Management)
	Mrs K K D K P Ranaweera
	Mrs M S W H Kumari, BSc (SL)
	Udaya Samantha Munindradasa, BA (SL)
 <b>Accounts Section</b>	 <i>(at Dartonfield, Agalawatta)</i>
<i>Senior Accountant</i>	S S Hewage, CPFA (UK), CBA, FPFA
<i>Accountant</i>	Mrs A M Lasanthi, BSc (SL)
<i>Management Assistants</i>	Mrs R Handungoda
<i>(Accounting)</i>	Mrs G P Kukulewithana
<i>Management Assistants (Clerical)</i>	Mrs K J M C R Fernando
	Mrs C Dissanayake
	A K D A Wickremasinghe
	Mrs S I K Pathirage
	Mrs S A Niluka Harshani
	Mrs K K D Y L Ranaweera
	Miss K K T L Jayasekera
	Miss R P Thilini
	J A J R Lakmal, BA (Mgt.)
	K A Dilan Sampath
	Mrs Erandi Kanchana Jayasinghe, BA (SL)

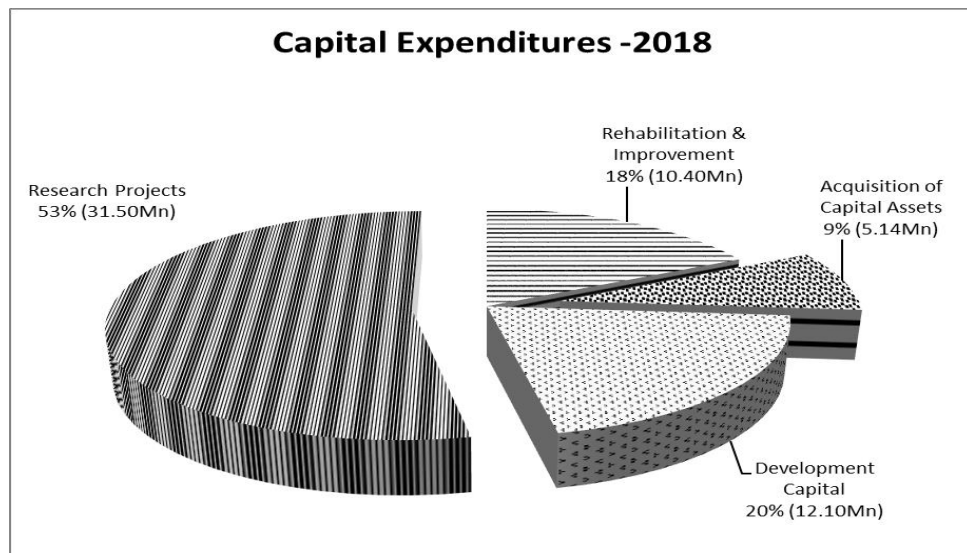
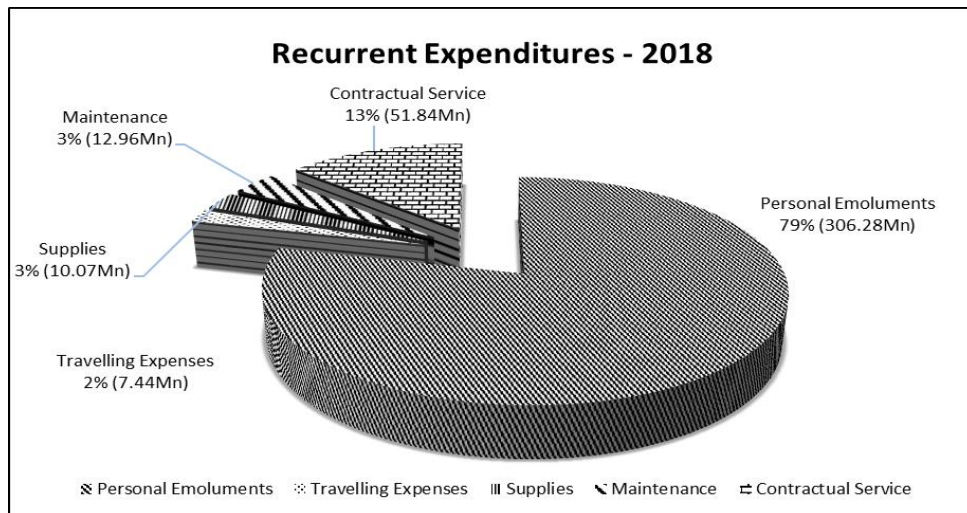
<i>Management Assistants (Clerical)</i>	Mrs S R Sinhabahu Harith Kalutharawithana, BSc (SL) G N K Gunasena Mrs K G P Hasara
<i>Cashier</i>	Mrs G A D D Jayawardena

### **Sub – stations & Estates**

<b>Kuruwita Sub-Station</b>	<i>(at Kuruwita)</i>
<i>Manager</i>	S A R Samarasekera (up to 13.01.2018)
<i>Management Assistants (Clerical)</i>	D S Jayasinghe K D P Senaratne
<b>Polgahawela Sub-Station</b>	<i>(at Narampola Estate, Nungamuwa, Yatigaloluwa)</i>
<i>Management Assistant (Accounting)</i>	D P N P Dissanayake
<b>Moneragala Sub-Station</b>	<i>(at Kumbukkana, Moneragala)</i>
<i>Field Officers</i>	V G D Nishantha Gunaseela N V U S Vijitha Kumara
<i>Management Assistants (Clerical)</i>	Mrs D M P Sandun Kumari M M Chamath Kumara
<b>Dartonfield Group</b>	
<i>Senior Manager - Estate</i>	P A Lukshaman, BSc (SL)
<i>Management Assistants</i>	H D D Achinda M A N Sachith Pawinda T D Harsha
<i>Field Officers (Nivitigalakele)</i>	B M Siriwardena A G L Sadaruwan (25.01.2018 - 28.09.2018)

## Financial Statements

### Analysis of Recurrent and Capital Expenditures for the Financial Year 2018



**RUBBER RESEARCH INSTITUTE OF SRI LANKA**  
**FINANCIAL STATEMENTS - 2018**  
**CONTENTS**


	<b>Page No.</b>
Statement of Financial Position as at 31.12.2018	42
Statement of Financial Performance for the year ended 31.12.2018	43
Statement of Consolidated Cash Flow as at 31.12.2018	44
Statement of Changes in Net Assets/Equity	45
Accounting Policies	46-52
Note 01- Property, Plant & Equipment	53-54
Note 02- Other Financial Assets	
2B I Kuruwita Estate (KE)	55
2B II Dartonfield Estate (DF)	55
Note 03 - Other Current Assets	56
Note 04- Inventories/Stocks	57
Note 04 A - Working Progress	57
Note 05- Receivables	58
Note 06- Investment	59
Note 07- Cash at Bank and Cash in Hand	59
Note 08- Payables	60
Note 09- Provision for Audit Fee	61
Note 10- Provision for Gratuity	61
Note 11- Capital Grants	62
Note 12- Accumulated Surpluses/(deficits)	62
Note 13- Other Income	63
Note 14 - Personal Emoluments	64
Note 14A - Wages, Salaries & Employee Benefits - DF Estate	65
Note 14B - Wages, Salaries & Employee Benefits - Kuruwita Estate	66
Note 14C - Wages, Salaries & Employee Benefits Monaragala Substation & Polgahawela Sub Station	67
Note 15- Travelling	68
Note 16- Suppliers and Consumables	69
Note 17- Depreciation of Non Current Assets	70
Note 18- Maintenance & Operational Expenditure Vehicles	71
Note 18A - Research Departments & Other Departments	72
Note 19- Contractual Services	73
Note 20- Research and Departments Exp.	74
Note 21- Other Operating Expenses	75
Note 22- Dartonfield Group Estate Working Accounts	76


Note 23- Kuruwita Estate Working Accounts	77
Note 24- Kumarawatta Estate Working Accounts	78
Note 25- Narampola Estate Working Accounts	78
Note 26A - NSF Grants	79
Note 26B - Special Projects	80
Schedule 01 - Inventories/Stocks RRI	81
Schedule 02 - Stock Value - Kuruwita Estate	82
Schedule 03 - Stock Value - Dartonfield Estate	83
Schedule 04 - Deposits	84
Schedule 05 - Other Debtors, General Debtors, Debtors, Loan Receivables	85
Schedule 06 - Doubtful Debtors	86
Schedule 07 - Trade & Other Receivable - Kuruwita	87
Trade & Other Receivable - DF Estate	87
Schedule 08 - Creditors	88
Schedule 09 - Payables Kuruwita Estate	89
Schedule 10 - Payables DF Estate	90
Schedule 11 - Accrued Expenses	91
11 - i RRI	91
11 - ii Kuruwita Estate	91
11 - iii DF Estate	91
Schedule 12 - Other Capital Grants	92
Labour rates and break down of COP in Dartonfield & Kuruwita	93

**RUBBER RESEARCH BOARD OF SRI LANKA - STATEMENT OF FINANCIAL POSITION  
AS AT DECEMBER 31, 2018**

ASSETS	Note	2018 Rs	2017 Rs
<b>Non-Current Assets</b>			
Land and Buildings	01	147,302,147.07	129,093,669.15
Infrastructure, Plant and Equipment		240,834,964.79	223,355,456.01
Intangible Assets		27,198,217.18	1,763,578.77
		415,335,329.04	354,212,703.93
<b>Current Assets</b>			
Other Financial Assets	02	528,830.35	1,162,239.07
Other Current Assets	03	57,434,696.18	74,461,291.11
Inventories	04	17,991,255.47	18,328,099.56
Working Progress	04-A	-	14,433,676.90
Receivables	05	10,491,121.92	12,486,666.35
Investments in Associates	06	545,447.49	533,485.73
Cash and cash Equivalents	07	119,817,078.64	124,195,754.31
		206,808,430.05	245,601,213.03
<b>Total Assets</b>		622,143,759.09	599,813,916.96
<b>LIABILITIES</b>			
<b>Current Liabilities</b>			
Payables	08	(58,024,149.50)	(75,898,415.51)
Short -Term Provisions	09	(1,478,816.48)	(1,100,000.00)
		(59,502,965.98)	(76,998,415.51)
<b>Non-Current liabilities</b>			
Employee Benefits	10	(130,991,234.00)	(125,509,973.50)
		(130,991,234.00)	(125,509,973.50)
<b>Total Liabilities</b>		(190,494,199.98)	(202,508,389.01)
<b>Total Net Assets</b>		<b>431,649,559.11</b>	<b>397,305,527.95</b>
<b>NET ASSETS/EQUITY</b>			
Accumulated Fund	11	961,384,287.07	879,654,719.38
Accumulated Surpluses/(Deficits)	12	(529,734,727.96)	(482,349,191.43)
<b>TOTAL NET ASSETS/EQUITY</b>		<b>431,649,559.11</b>	<b>397,305,527.95</b>


The Financial Statements have been prepared in accordance with Sri Lanka Public Sector Accounting Standards (SLPSAS).

  
**B S S Hewage**  
Senior Accountant – RRI

  
**V.H.L. Rodrigo**  
Acting Director - RRI

The accounting policies and notes on pages from 42 to 94 from an integral part of these Financial Statements. The Board of Directors is responsible for the preparation and presentation of these Financial Statements. These Financial Statements were approved by the Board of Directors and signed on their behalf.

  
**Dr. (Mrs.) Vishaka Sooriyabandara**  
Chairperson – RRB

  
**R.A.D.S. Ranatunga**  
Board Member

**RUBBER RESEARCH BOARD OF SRI LANKA**  
**STATEMENT OF FINANCIAL PERFORMANCE FOR THE YEAR ENDED DECEMBER 31, 2018**

Description	Note	RRI		Df. Estate		K'wita Estate		Kumarakawatta Estate		Narampola Estate		Total	
		2018	2017	2018	2017	2018	2017	2018	2017	2018	2017	2018	2017
		Rs		Rs		Rs		Rs		Rs		Rs	
Transfers from other government entities		372,300,000.00	386,780,000.00									372,300,000.00	386,780,000.00
Other revenue	13	11,172,102.03	9,421,261.97									11,172,102.03	9,421,261.97
Deferred Income		32,788,688.50	25,776,641.52									32,788,688.50	25,776,641.52
Gross Profit Df. Estate & K'wita Estate	22,23	-	-	53,345,505.84	52,937,526.85	27,150,560.14	25,196,451.06					80,496,065.98	78,133,977.91
Other Income Estate (Projects)	22,23,24,25	-	-	3,449,088.76	4,837,246.78	7,708,085.00	1,191,014.52	9,020.00	10,367.50	92,438.50	1,382,416.79	11,258,632.26	7,421,045.59
Special Capital Projects - MPI		45,929,463.79	17,961,056.82									45,929,463.79	17,961,056.82
Special Capital Projects - CF		13,621,719.62	-									13,621,719.62	
NSF and other Projects	26	4,820,978.81	3,279,249.18									4,820,978.81	3,279,249.18
<b>Total Revenue</b>		<b>480,632,952.75</b>	<b>443,218,209.49</b>	<b>56,794,594.60</b>	<b>57,774,773.63</b>	<b>34,858,645.14</b>	<b>26,387,465.58</b>	<b>9,020.00</b>	<b>10,367.50</b>	<b>92,438.50</b>	<b>1,382,416.79</b>	<b>572,387,650.99</b>	<b>528,773,232.99</b>
<b>Less: Expenses</b>													
Wages, Salaries and employee benefits	14,15,14A,14B,14C	292,097,963.79	285,404,373.97	31,579,353.71	28,964,986.54	17,181,574.54	16,841,774.52	4,692,199.09	4,182,430.59	10,000.00	2,448,168.53	345,561,091.13	337,841,734.15
Supplies and consumables used	16,14A,14B,14C	13,462,434.52	12,477,779.01	1,615,996.42	2,435,855.01	1,502,631.74	1,080,481.80	991,944.34	295,758.25	269,284.04	75,571.58	17,842,291.06	16,365,445.65
Depreciation and amortization expenses	17,14A,14B,14C	32,000,387.85	25,776,641.52	1,545,361.38	1,195,710.34	379,047.63	388,696.61					33,924,796.86	27,361,048.47
Maintenance of property, plant and equipment	14A	21,996,543.29		7,937,028.68	6,315,472.59	3,484,275.76						33,417,847.73	6,315,472.59
Other expenses	18,19,20,21,14A,14B,14C	96,478,387.79	153,562,354.63	760,598.08	381,037.11	258,196.72	129,277.64	179,836.00	631,188.63	121,815.00	398,536.72	97,798,833.59	155,102,394.73
Finance Costs	14A,14B	68,415.73	69,100.00	479,225.99	527,785.78	169,540.73	204,427.60					717,182.45	801,313.38
Other Expenditure Estate (Projects)	22,23			-	6,673,963.59	-	2,453,948.25	3,840.00				3,840.00	9,127,911.84
Special Capital Projects - MPI	20	45,929,463.79	17,961,056.82									45,929,463.79	17,961,056.82
Special Capital Projects - CF		13,621,719.62	-									13,621,719.62	-
NSF and other Projects	26	4,820,978.81	3,279,249.18									4,820,978.81	3,279,249.18
<b>Total Expenses</b>		<b>520,476,295.19</b>	<b>498,530,555.13</b>	<b>43,917,564.26</b>	<b>46,494,810.96</b>	<b>22,975,267.12</b>	<b>21,098,606.42</b>	<b>5,867,819.43</b>	<b>5,109,377.47</b>	<b>401,099.04</b>	<b>2,922,276.83</b>	<b>593,638,045.04</b>	<b>574,155,626.81</b>
<b>Surplus/(Deficit) for the Period</b>		<b>(39,843,342.44)</b>	<b>(55,312,345.64)</b>	<b>12,877,030.34</b>	<b>11,279,962.67</b>	<b>11,883,378.02</b>	<b>5,288,859.16</b>	<b>(5,858,799.43)</b>	<b>(5,099,009.97)</b>	<b>(308,660.54)</b>	<b>(1,539,860.04)</b>	<b>(21,250,394.05)</b>	<b>(45,382,393.82)</b>



**RUBBER RESEARCH BOARD OF SRI LANKA  
CONSOLIDATED CASH FLOW STATEMENT  
FOR THE YEAR ENDED 31 DECEMBER 2018**

	<b>2018</b>		<b>2017</b>
	<b>Rs</b>		<b>Rs</b>
<b><u>Operating Activities</u></b>			
Surplus/Deficit		(21,250,394)	(45,382,394)
Non Cash Movements			
Add : Depreciations	33,417,848		27,361,048
Provision for Gratuity	20,214,974		30,670,025
Prior Year adjustment	26,084,947		8,670,542
Less : Interest on Investment	(34,037)		(429,322)
Deferred Income	(32,788,689)		(25,776,642)
Deferred Special and NSF	(130,379,735)		(21,240,306)
<b>Net Cash Flow before working Capital Changes</b>		(83,484,692)	19,255,345
<b><u>Working Capital Changes</u></b>			
Increase /(Decrease) Payables	(17,495,450)		13,187,540
(Increase)/Decrease other current Assets	34,426,069		(54,415,472)
Gratuity paid	(14,733,714)		(17,900,577)
<b>Net Cash Flow from Operating Activity</b>		2,196,906	(59,128,509)
<b><u>Investing Activities</u></b>			
Purchase of Property ,Plant and Equipment	(94,398,593)		(63,361,895)
Interest Income on Investment	34,037		428,401
<b>Net Cash Flow from Investing Activity</b>		(94,364,556)	(62,933,494)
<b><u>Finance Activities</u></b>			
Fund Received from Treasury for Capital Grant	87,000,000		51,000,000
Net Cash flow of NSF	3,040,123		6,480,657
Fund Received for Special Project	88,874,179		115,514,000
<b>Net Cash Flow from Financing Activity</b>	-	178,914,302	172,994,657
<b>Net Cash Flow for the Year</b>	-	(17,988,434)	24,805,605
<b>Cash and Cash Equivalents at Beginning of the Year</b>		124,729,240	99,923,635
<b>Cash and Cash Equivalents at End of the Year</b>		106,740,807	124,729,240

**RUBBER RESEARCH BOARD OF SRI LANKA**  
**STATEMENT OF CHANGES IN NET ASSETS/EQUITY**  
**ENDED DECEMBER 31, 2018**

ATTRIBUTABLE TO OWNERS OF THE CONTROLLING ENTITY						Rs.	
	Contributed Capital	Other Reserves	Translation Reserves	Accumulated Surpluses/(Deficits)	Total	Minority Interest	Total net Assets/equity
Balance at December 31, 2016							
Changes in accounting policy	749,970,269.54			(445,637,339.60)	304,332,929.94		304,332,929.94
Restated balance							
<b>Change in net asset/equity for 2017</b>							
Gain on property revaluation							
Loss on revaluation of investments							
Exchange differences on translating							
Funds Received	129,684,449.84				129,684,449.84		129,684,449.84
Prior Year Adjustment				8,670,541.99	8,670,541.99		8,670,541.99
Net revenue recognized directly in net asset/equity							
Surplus for the period				(45,382,393.82)	(45,382,393.82)		(45,382,393.82)
<b>Total recognized revenue and expenses for the period</b>							
<b>Balance at December 31, 2017</b>	<b>879,654,719.38</b>	<b>-</b>	<b>-</b>	<b>(482,349,191.43)</b>	<b>397,305,527.95</b>	<b>-</b>	<b>397,305,527.95</b>
<b>Carried forward</b>							
Balance at December 31, 2017 brought forward	879,654,719.38	-	-	(482,349,191.43)	397,305,527.95	-	397,305,527.95
<b>Change in net assets/equity for 2018</b>							
<b>Loss on property Revaluation</b>							
Gain on revaluation of investments							
Prior Year Adjustment				(26,084,947.48)	(26,084,947.48)		(26,084,947.48)
Exchange differences on translating foreign operations							
Net revenue organized directly in net assets/equity	81,729,567.69			(482,349,191.43)	(400,619,623.74)		(400,619,623.74)
Deficit for the period				(21,250,394.05)	(21,250,394.05)		(21,250,394.05)
<b>Total recognized revenue and expenses for the period</b>							
<b>Balance at December 31, 2018</b>	<b>961,384,287.07</b>			<b>(529,684,532.96)</b>	<b>431,699,754.11</b>		<b>431,649,559.11</b>

**RUBBER RESEARCH BOARD OF SRI LANKA**  
**Notes to the Financial Statements**

**1. Corporate Information**

**1.1 Reporting Entity**

The Rubber Research Board of Sri Lanka (RRB) was established as a Public Corporation under the Rubber Research Ordinance. This Ordinance has been amended from time to time; the most recent introduction has been the “Rubber Research Bill Part II of April 2003 with the amendment No. 28”. The RRB coming under the purview of Ministry of Plantation Industries and the registered office of the RRB is located at Telawala Road, Rathmalana.

**1.2 Principal Activities and Nature of Operations**

The Mission of RRB is to revitalize the rubber sector by developing economically and environmentally sustainable innovations and transferring the latest technologies to the stakeholders through training and advisory services.

**1.3 Number of Employees**

The number of employees of the RRB as at 31st December 2018 amounted to. 386. The comparative figure for the year 2017 was 409.

**1.4 Financial Year**

The Financial year of the RRB is the 12 months period ended by 31<sup>st</sup> December 2018.

**1.5 Date of Authorization for Issue**

The Financial Statements for the year ended 31/12/2018 of RRB were authorized for issue by the Board of Management on 28th February 2019.

**2. Significant Accounting Policies**

**2.1 Basis of preparation of Financial Statements**

The Financial Statement of the RRB is prepared in Sri Lankan Rupees on a historical cost basis and presented in Sri Lankan Rupees.

**2.2 Statement of Compliance**

The Financial Statement of the RRB has been prepared in accordance with the Sri Lanka Public Sector Accounting Standards (SLPSAS).

**2.3. Assets and Basis of Valuation**

**2.3.1** Property Plant and Equipment are recorded at cost less depreciation in the financial statement.

The cost of Property Plant and Equipment are the market value or cost of purchase with any incidental expenses

## **2.4 Depreciation Policy**

- 2.4.1** Fixed Asset will not be depreciated in the year of purchasing and the depreciation will be commence as from the following year.
- 2.4.2** The depreciation charges are determined separately for each significant part of an item of Property, Plant and Equipment and begin to depreciate when it is available for use.
- 2.4.3** The provision for depreciation is calculated at written down value method on the cost of all Property Plant and Equipment. The effective rates are as follows.

<b>Description</b>	<b>Life period years</b>	<b>Rate (%)</b>
Buildings	40	2.5%
Intangible Assets	5	20%
Furniture, Fittings & Office Equipment	5	20%
Power & Water Supply	10	10%
Machinery & Tools	8	12.5%
Lab Apparatus	5	20%
Motor Vehicles	5	20%
Library Books, Periodicals & Journals	5	20%
Documentary Film	8	12.5%
Earth Slip Project	25	4%
Other Assets	10	10%
Effluent Treatment Plant	25	4%
Audio Visual Equipment	5	20%
Computer Software	10	10%
Roads	10	10%

After completion of revaluation process the provision for depreciation will be adjusted by using the straight line method.

## **2.5 Inventories**

Inventories consist of spare parts, maintenance items, cleaning materials and stationery stock *etc.* are stated on Average cost basis.

## **2.6 Receivables**

Receivables are stated at the amounts identified as active Debtors, receivables *etc.*

## **2.7 Provision for bad and doubtful debts**

Provisions for bad and doubtful debts is calculated and provided in the accounts as follows.

<b>Period of outstanding</b>	<b>Provision made</b>
Less than one year	Nil
2015 to 2017	5.0%
Up to 2015	100.0%

## **2.8 Cash and cash equivalent**

Cash and cash equivalent consists of Investment, cash at banks and cash in hand.

## **2.9 Conversion of foreign exchange**

Foreign currency has been converted at prevailing rates.

## **2.10 Retirement Gratuity**

Provision has been made in the Financial Statements for retirement gratuities equivalent to an amount calculated based on a half month's salary of the last month Financial Year of all employees for each completed year of service, commencing from the first year of service. However under the payment of Gratuity Act No 12 of 1983, the liability to an employee arises only on completion 5 years of continued service.

## **2.11 Government Grant**

### **2.11.1 Recurrent Grant**

The Recurrent Grant received from the government is reflected in the Income Statement as the source of income of the RRB.

### **2.11.2 Capital Grant**

The Capital Grant received from the government has been set up as Deferred Income which is recognized as income on a systematic and rational basis over the useful life time of the assets.

The acquisition of Property Plant & Equipment under the Capital Grant is Rs. 96,667,487.22.

**2.11.3** Replanting subsidies have been set off against replanting expenditure and net amount has been represented in the balance sheet under fixed assets.

**2.11.4 Other Grants**

National Science Foundation (NSF) and Special Project Grants for the year 2018 have been shown under the Note No 26A and 26B. The amount equal to the expenditure for the year 2018 has been treated as NSF and Special Project Grants in the statement of Financial Performance.

**2.12 Deferred Income**

Deferred Income consists of the Capital Grant received from the General Treasury in the year 2018 for capital expenditure.

The Deferred Income is recognized as income on a systematic and rational basis over the useful life time of the assets in case of capital grant and amortizes the deferred income set up for capital purchases.

**2.13 Revenue Recognition**

Institute generates Revenue from the following sources, and recognizes such revenues for accounting purposes on the accruals basis.

- (a) By providing Testing and Analytical Fees
- (a) By organizing Seminars and Work Shops
- (b) Sale of Publications
- (c) Sundry Receipts

**2.14 Expenditure**

All expenditures are recognized on the accrual basis.

**2.15 Adjustments made to the Cumulative Expenditure**

Adjustment of Rs.26,084,947.48 has been made to the cumulative expenditure account.

**3. Legal Matters**

Legal issues pertaining to matters of employees were pending at Courts as at 31<sup>st</sup> December 2018 are as follows.

	Case No.	Court/Institution	Applicant
01.	KT/LT/517/2016	Labour Court, Kalutara	Mr. L.P.K.W.Waliwatta
02.	SCFR/139/2016	High Court, Colombo	Mrs. Priyanthi Perera
03.	32/RT/01/2013	Supreme Court, Colombo	Mr. Jehan Perera

#### 4. Consolidation Policies

- 4.1 The Rubber Research Board accounts comprise the consolidation of the activities of the R.R.I. Estates (plantations) managed by the Rubber Research Institute. *i.e.* Dartonfield Group & Kuruwita Estate.
- 4.2 The Rubber Research Institute and estates have a common financial year which ends on 31 December.
- 4.3 The profits and losses of the plantations have been taken in to the Rubber Research Institute surplus/deficit account and reflected in the balance sheet.
- 4.4 The project Accounts have not been consolidated with the Rubber Research Institute Accounts, since they are separate entities. However, the detail information of the projects have been shown separately and it has been reflected in the financial statements.

#### 5. Non-Current Assets

##### 5.1 Lands

The Rubber Research Institute of Sri Lanka has ownership of all the lands except Galewatta, Kumarawatta (Monaragala) and Narampola (Alawwa).

##### 5.2 Substation at Narampola (Alawwa) Kumarawatta (Monaragala)

###### (a) Narampola (Alawwa)

The extent of this land is 106 Acres 02 Roods & 31 perches. This land was taken over on 14.12.2004 under MOU on a Rental agreement.

###### Kumarawatta (Monaragala)

(b) The extent of the land is 50 acres and this was taken over from the JEDB on 19 September 2006 under MOU on 30 years Lease agreement.

(c) The cabinet approval has been obtained to acquire these Lands and the ownership will be transferred by the Ministry of Plantation Industries

(MPI) to RRB after completion of legal requirements with land Reform commission (LRC) and Janatha Estate Development Board (JEDB).

**(d) Profit and Loss - Narampola (Alawwa) Kumarawatta (Monaragala) Substations**

- (i) Narampola substation is established for the purpose of research and extension activities and it is still in developing stage.
- (ii) Kumarawatta (Monaragala) Substation has been established for Research and extension activities related to non-traditional Rubber growing areas including Northern and Eastern Provisions. RRI can't expect a profit from the substation as it is a small Land for research activities and cultivation.

**6. Goods in Transits**

The amounts of Rs.31,172,353.95 is shown as Goods in transit for the year 2018.

**7. Current Assets**

**7.1 Debtors & Other Receipts**

The Surety Bond Debtors balance as at 31.12.2018 is Rs.**3,509,706.50** which has made up as follows.

Mr. H.H.Talgaswatta	-	38,402.56
Mr. S.M.C.E. Silva	-	1,635,005.85
Mr. Nalinda P Wickramasinghe -		10,643.54
Mr. B.P. Weerathna	-	<u>1,825,654.55</u>
Total		<u>3,509,706.50</u>

**8. Research & Development Expenditure**

Research and development expenditure have been charged to departmental expenditure for the relevant period.

**9. New planting/replanting/crop diversification expenditure**

The above categories of expenditure have been capitalized in the accounts and depreciation will be made on maturity.

**10. Categorizing Expenditure against Budget Format**

Laboratory Working expenses and Field Working expenses have been shown under Research and Development Expenditure in the Statement of Financial



Performance. In the Budget Format, Laboratory working expenses and Field working expenses have been shown under Supplies and services respectively.

Other Operating Expenses are the value of services rendered from the estates (Dartonfield and Kuruwita) to the Rubber Research Institute except Rent for Narambola and Kumarawatta. These expenses are charged to the Rubber Research Institute from the Monthly accounts of Dartonfield and Kuruwita Estates. Labour charges related to Institute activities have been charged to the relevant department expenditure votes.

**RUBBER RESEARCH BOARD OF SRI LANKA**  
**NOTES TO THE STATEMENT OF FINANCIAL POSITION AS AT 31ST DECEMBER 2018**  
**NOTE 01 - LAND & BUILDINGS**

ASSETS	Cost as at 01.01.2018 Rs.	Additional during the year 2018 Rs.	Vehicles Sales Rubber Came into Tapping Rs.	Total as at 31/12/2018 Rs.	Accumulative Depreciation as at 01.01.2018 Rs.	Depreciation for the year 2018 Rs.	Accumulated Depreciation as at 31/12/2018 Rs.	Written down value as at 31/12/2018 Rs.	
Road Development Df.	10,504,650.50	221,778.09		10,726,428.59		1,050,465.05	1,050,465.05	9,675,963.54	
Land - Df.	1,010,704.74			1,010,704.74	-		-	1,010,704.74	
- N'kele	357,805.89			357,805.89	-		-	357,805.89	
- Galewatta	1,865,476.48			1,865,476.48	-		-	1,865,476.48	
- Kuruwita	732,681.96			732,681.96	-		-	732,681.96	
- Rathmalana	270,760.81			270,760.81	-		-	270,760.81	
Capital Ex. Land productivity	-			-				-	
improvement in existing rubber cultivation	-			-				-	
Note 26	-			-				-	
Lease Land - Alawwa (55 years lease)	662,365.75			662,365.75	-		-	662,365.75	
- Monaragala (99 years lease)	106,650.00			106,650.00	-		-	106,650.00	
Buildings - Df. H.Q.	51,272,101.38	16,979,520.47		68,251,621.85	9,100,747.23	1,054,283.85	10,155,031.08	58,096,590.77	
- Auditorium	33,848,323.04			33,848,323.04	4,187,144.48	741,529.46	4,928,673.94	28,919,649.10	
- Df. Estate	3,986,745.16			3,986,745.16	1,025,616.79	74,028.21	1,099,645.00	2,887,100.16	
- N'kele	4,181,982.44	231,811.15		4,413,793.59	797,681.93	84,607.51	882,289.44	3,531,504.15	
- Galewatta	713,605.29	102,128.45		815,733.74	158,648.55	13,873.92	172,522.47	643,211.27	
- Kuruwita	5,950,434.04			5,950,434.04	1,035,819.58	122,865.36	1,158,684.94	4,791,749.10	
- Rathmalana	18,954,831.49	1,776,263.52		20,731,095.01	5,278,506.38	341,908.13	5,620,414.51	15,110,680.50	
- Alawwa	1,302,848.78			1,302,848.78	275,248.62	25,690.00	300,938.62	1,001,910.16	
- Monaragala	14,897,068.52			14,897,068.52	3,096,511.28	295,013.93	3,391,525.21	11,505,543.31	
Upgrading telecommunication	3,497,830.61	2,787,005.59		6,284,836.20	67,272.88	85,763.94	153,036.82	6,131,799.38	147,302,147.07
<b>Intangible Assets</b>									
Software	2,129,978.77	25,787,354.16		27,917,332.93	366,400.00	352,715.75	719,115.75	27,198,217.18	27,198,217.18
<b>Infrastructure, Plant and equipment</b>									
Machinery & Tools - Df.	1,052,760.90	1,259,593.53		2,312,354.43	362,442.35	86,289.82	448,732.17	1,863,622.26	
- N'kele	223,735.00			223,735.00	79,610.27	18,015.59	97,625.86	126,109.14	
- Df. Estate	914,886.13	11,700.00		926,586.13	639,564.45	34,415.21	673,979.66	252,606.47	
- Kuruwita	902,469.50	4,750.00		907,219.50	156,356.91	93,264.07	249,620.98	657,598.52	
- Rathmalana	2,878,685.00			2,878,685.00	2,029,184.29	106,187.59	2,135,371.88	743,313.12	
- Alawwa	13,045.50			13,045.50	8,131.80	614.21	8,746.01	4,299.49	
Laboratory Equipments - Df.	97,907,090.14	352,999.00		98,260,089.14	59,152,404.59	7,750,937.11	66,903,341.70	31,356,747.44	
- Rathmalana	109,380,756.41	14,315,271.53		123,696,027.94	66,084,435.23	8,659,264.24	74,743,699.47	48,952,328.47	
- N'kele	8,530,802.98			8,530,802.98	5,154,044.60	675,351.68	5,829,396.28	2,701,406.70	
Audio Visual Equipment	1,057,987.09	339,045.00		1,397,032.09	175,320.70	176,533.28	351,853.98	1,045,178.11	
Effluent Treatment Plant	9,422,910.68			9,422,910.68	1,293,889.64	325,160.84	1,619,050.48	7,803,860.20	
Motor vehicles - H.Q.	94,317,215.16	12,720,000.00		107,037,215.16	69,839,896.74	4,895,463.68	74,735,360.42	32,301,854.74	
- Df. Estate	2,683,114.10			2,683,114.10	1,295,949.87	277,432.85	1,573,382.72	1,109,731.38	
- Kuruwita	365,960.00	359,000.00		724,960.00	314,292.76	10,333.45	324,626.21	400,333.79	
Power & Water Supply - Df.	2,443,029.99	1,374,917.19		3,817,947.18	763,949.56	167,908.04	931,857.60	2,886,089.58	



**NOTE (02 ) OTHER FINANCIAL ASSETS**

**NOTE 2B -I KURUWITA**

<b>Description</b>	<b>Rs. 2018</b>	<b>Rs. 2017</b>
Young Budding Nursery 2013	-	-
2007 Bud Wood Nursery		18,039.70
Bud wood Nursery 2008		11,539.90
Bud Wood Nursery 2011	36,795.39	36,795.39
2014 Young Bud wood Nursery	29,208.23	29,208.23
<b>Sub Total</b>	<b>66,003.62</b>	<b>95,583.22</b>

**NOTE 2B -II DARTONFIELD ESTATE**

<b>Description</b>	<b>Rs. 2018</b>	<b>Rs. 2017</b>
2013/2014 Young Budding Nursery NK	-	183,049.61
G/W Young Budding Nursery 2014/2015	-	772,356.04
2018 Young Budding NS	243,648.04	-
Banana Trails - DF	15,488.73	-
Budwood Nursery	-	111,250.20
Paper Trails - DF	92,439.76	
Budwood Nursery NK	17,210.00	
Budwood Nursery - GW	94,040.20	-
<b>Sub Total</b>	<b>462,826.73</b>	<b>1,066,655.85</b>
<b>Grand Total</b>	<b>528,830.35</b>	<b>1,162,239.07</b>

**Note 03**

**OTHER CURRENT ASSETS**

Description	Schedule No.	RRI		K'wita Estate		Df. Estate		Total	
		Rs		Rs		Rs		Rs	
		2018	2017	2018	2017	2018	2017	2018	2017
Deposits	Schedule 04	661,323.57	421,493.91					661,323.57	421,493.91
Other Debtors	Schedule 05	2,803,029.97	-					2,803,029.97	-
General Debtors	756,190.67							-	-
		756,190.67	2,664,769.79					756,190.67	2,664,769.79
Debtors		3,726,632.33	2,823,950.05					3,726,632.33	2,823,950.05
Loan Receivable		3,505,956.93	2,467,550.58					3,505,956.93	2,467,550.58
Trade & Other Receivables	Schedule 07			290,277.04	273,423.14			290,277.04	273,423.14
Trade & Other Receivables	Schedule 07					5,554,150.74	4,255,126.89	5,554,150.74	4,255,126.89
Good In Transit A/C		31,172,353.95	38,031,023.17					31,172,353.95	38,031,023.17
Debtor's Clearance A/C		23,349,076.55	23,523,953.58					23,349,076.55	23,523,953.58
Less : Provision for bond debtors (Schedule 06)		(23,527,496.41)						(23,527,496.41)	-
(Inter Transaction Accounts - Current A/C)				3,869,276.60		5,275,730.53		9,145,007.13	-
		<b>42,447,067.56</b>	<b>69,932,741.08</b>	<b>290,277.04</b>	<b>273,423.14</b>	<b>5,554,150.74</b>	<b>4,255,126.89</b>	<b>57,436,502.47</b>	<b>74,461,291.11</b>

**Note 04****INVENTORIES/STOCKS**

Location	Schedule No.	2018	2017
		Rs.	Rs.
RRI	Schedule 01	16,914,719.88	17,205,008.04
K'wita Estate	Schedule 02	330,056.48	164,571.00
Df Estate	Schedule 03	746,479.11	958,520.52
Total		<b>17,991,255.47</b>	<b>18,328,099.56</b>

**RUBBER RESEARCH BOARD OF SRI LANKA**

NOTES TO THE STATEMENT OF FINANCIAL POSITION AS AT 31ST DECEMBER 2018

**Note - 04 A****WORKING PROGRESS**

Description	2018	2017
	Rs.	Rs.
Renovation of Administration Building		1,956,062.25
Renovation of Accounts Building		1,920,474.12
Installation of Drying Tower		1,161,152.11
Renovation of Plant Science Dept.		498,466.25
Renovation of Dir, AD, & Open area		2,274,806.37
Installation of A/C units		1,384,650.00
Renovation of Stores		3,160,556.30
Renovation of Timber Stores		2,077,509.50
<b>Sub Total</b>	<b>-</b>	<b>14,433,676.90</b>

## NOTE 05 - RECEIVABLES

Description	2018 Rs.	2017 Rs.
RDD/ASD/RRI Control A/C.	208,295.19	2,032,605.90
RDD	261,000.00	
Festival Advance	68,966.70	83,966.70
Travelling Advance	137,400.00	42,000.00
A.S.D. Building Complex	5,214,500.00	5,214,500.00
Special Salary Advance	400.00	
Security Deposits	32,150.00	32,150.00
E T F	37,692.08	37,692.08
Insurance	(172,307.97)	22,369.28
Pre Payments T. Premaratne, Suranga Motors, Ampara	150,000.00	150,000.00
Cheques and Cash Purchase Advance	373,631.91	
Mobilization Advance	3,858,188.75	
Supplier and cash Advance A/C	223,801.26	4,871,382.39
Receivable A/c 03.51.06	97,404.00	
<b>Total</b>	<b>10,491,121.92</b>	<b>12,486,666.35</b>

**Note - 06****INVESTMENT**

Description	2018	2017
	Rs.	Rs.
Bank Of Ceylon Agalawatta C/29 200835	200,000.00	200,000.00
National Savings Bank-City Branch A/C No.1-0002-04-5806-06	343,917.17	332,107.10
National Savings Bank-Matugama FD No.2-0045-01-58658	1,530.32	1,378.63
<b>Total</b>	<b>545,447.49</b>	<b>533,485.73</b>

**Note -07 CASH AT BANK AND IN HAND**

	Cash at Bank	Cash in Hand	2018 TOTAL Rs.	2017 TOTAL Rs.
Bank of Ceylon - Cor.Branch A/C No.1837	62,561,640.68	-	62,561,640.68	64,279,142.23
Bank of Ceylon - Agalawatta A/C No.335976	36,026,840.78	-	36,026,840.78	37,197,282.04
Bank of Ceylon - Agalawatta	5,442,071.74	-	5,442,071.74	5,442,071.74
Dartonfield Estate A/C No.335978	13,780,074.64	2,497.03	13,782,571.67	7,702,484.46
Kuruwita Estate A/C No.4320540	1,996,734.90	7,218.87	2,003,953.77	9,547,679.75
<b>Total</b>	<b>119,807,362.74</b>	<b>9,715.90</b>	<b>119,817,078.64</b>	<b>124,195,754.31</b>



**Note 08**

**Payables**

Description	Schedul No.	RRI		K'wita Estate		Df. Estate		Total	
		Rs.		Rs.		Rs.		Rs.	
		<u>2018</u>	<u>2017</u>	<u>2018</u>	<u>2017</u>	<u>2018</u>	<u>2017</u>	<u>2018</u>	<u>2017</u>
Creditors	Schedule 08	21,714,479.88	20,359,279.62					21,714,479.88	20,359,279.62
Payables	Schedule 08, 09, 10	1,500,590.42	831,977.12	3,400,672.48	2,639,858.86	9,831,278.87	11,806,150.65	14,732,541.77	15,277,986.63
				(Schedule 09)	(Schedule 09)	(Schedule 10)	(Schedule 10)		
Accrued Expenses	Schedule 11	21,577,127.85	40,047,127.66			-	214,021.60	21,577,127.85	40,261,149.26
<b>Total</b>		<b>44,792,198.15</b>	<b>61,238,384.40</b>	<b>3,400,672.48</b>	<b>2,639,858.86</b>	<b>9,831,278.87</b>	<b>12,020,172.25</b>	<b>58,024,149.50</b>	<b>75,898,415.51</b>

**PROVISION FOR AUDIT FEE**

**Note - 09**

Description	2018	2017
	Rs.	Rs.
Beyond 2018.01.01	0.00	-
Provision for 2018	1,478,816.48	1,100,000.00
<b>Total</b>	<b>1,478,816.48</b>	<b>1,100,000.00</b>

**PROVISION FOR GRATUITY**

**Note - 10**

Description	2018	2017
	Rs.	Rs.
RRI	107,680,114.00	100,893,773.50
Kuruwita	5,082,000.00	5,789,000.00
Dartonfield	15,868,300.00	16,783,200.00
Provision for Gratuity Polgahawela	981,120.00	858,480.00
Provision for Gratuity Monaragala	1,379,700.00	1,185,520.00
<b>Total</b>	<b>130,991,234.00</b>	<b>125,509,973.50</b>

**Note - 11**

Description	Schedul No.	2018	2017
		Rs.	Rs.
Accumulated Fund	Schedule 12	45,044,234.46	45,044,234.46
Other Capital Grants		219,904,817.99	178,764,842.18
Treasury Grants Capital		623,928,918.84	569,717,607.34
Treasury Grants -R & D expenditures for special capital projects		(13,621,719.62)	
Treasury Grants Cess		79,828,035.40	79,828,035.40
Plantation Crop Development Fund		6,300,000.00	6,300,000.00
<b>Total</b>		<b>961,384,287.07</b>	<b>879,654,719.38</b>

**Note 12**

Description	2018	2017
	Rs.	Rs.
Deficit A/C Balance B/F 01.01.2018	(482,399,386.43)	(445,637,339.60)
Prior Year adjustment	(26,084,947.48)	8,670,541.99
	(508,484,333.91)	(436,966,797.61)
Deficit 2017 year	(21,250,394.05)	(45,382,393.82)
<b>Total</b>	<b>(529,734,727.96)</b>	<b>(482,349,191.43)</b>

**Note-13 - OTHER INCOME - 2018**

DESCRIPTION	NON RESEARCH	RESEARCH	TOTAL RS.	
			2018 Rs.	2017 Rs.
Interest On Institute Loans	120,120.80		120,120.80	126,109.41
Sales Of Publication	194,400.00		194,400.00	178,760.00
Bus fare Recoveries	280,831.00		280,831.00	282,291.50
Sundry Receipts	4,771,305.56		4,771,305.56	2,560,149.80
External heavy vehicles entering to RRI Premises	-		-	-
Effluent Treatment- B/C Dept.		39,700.00	39,700.00	189,150.00
Testing of Rubber - Polymer		334,875.00	334,875.00	-
Testing of Rubber - Rubber Technology		250,222.00	250,222.00	204,540.00
Testing of Rubber - RRP Dept.			-	541,650.00
Kuruwita Guest House Occupational Charges	11,050.00		11,050.00	4,287.42
Sale of Rejected Items	34,088.00		34,088.00	36,485.00
Soil & Foliar analysis Fee	-		-	308,652.10
Interest on Investments	34,036.81		34,036.81	429,321.54
Sale of Tapping Knives	24,090.00		24,090.00	247,730.00
Use of RRI Vehicles for Projects		254,887.80	254,887.80	30,437.50
Profit on Training Programmes		606,633.20	606,633.20	555,926.40
Guest House Income	4,758.00		4,758.00	187,300.00
Soil Foliar Survey	150.00		150.00	705,296.30
Waste Rubber of RRI Depts. Sold		-	-	-
Tapping Panel Making plants sale		98,500.00	98,500.00	35,675.00
Testing T.S.R.Samples		1,205,580.20	1,205,580.20	1,921,400.00
Testing and Analytical Fees Polymer Chemistry		510,500.00	510,500.00	803,600.00
Insurance claims Received Factory Fire	-		-	-
Auditorium Income	-		-	-
RRI Internal Timber Used	-		-	-
Sale of Bud wood Stumps			-	500.00
Claims Received from Insurance Corporation	-		-	-
Registration Suppliers	60,260.00		60,260.00	39,250.00
Testing fee Plant Pathology	-		-	-
Testing Fees - Plant Patho			-	19,500.00
Testing Fees - Plant Science			-	13,250.00
I.R.R.D.B.- Income	1,126,900.00		1,126,900.00	
Other Sales	1,209,213.66		1,209,213.66	
<b>Total</b>	<b>7,871,203.83</b>	<b>3,300,898.20</b>	<b>11,172,102.03</b>	<b>9,421,261.97</b>

**Note -14 PERSONAL EMOLUMENTS**
**EXPENDITURE STATEMENT - 2018**

Research Departments	Emoluments	P.F.	E.T.F.	Medical Fund	Over Time	House Rent	Transport Allowance	Fuel Allowance	Total Rs.
Plant Science	15,310,491.82	2,131,067.86	426,213.59	2,562,867.15	592,238.18	78,086.74	404,880.00	388,080.00	21,893,925.34
Plant Pathology	10,718,045.17	1,066,639.86	213,327.98	1,256,586.55	269,401.81	44,132.90	404,880.00	388,080.00	14,361,094.27
Genetics & Plant Breeding	15,094,947.58	1,992,965.11	398,593.05	2,350,554.68	584,971.41	56,886.78	404,880.00	388,080.00	21,271,878.61
Soils & Plant Nutrition	10,333,256.65	1,415,922.65	283,184.53	1,651,917.91	61,729.20	55,880.00	-	-	13,801,890.94
Raw Rubber & Chemical Analysis	7,522,514.19	1,002,025.73	200,405.15	1,020,324.87	135,996.56	43,630.00	-	-	9,924,896.50
Bio-Chemistry & Physiology	4,536,495.47	605,279.18	121,055.83	720,312.41	84,125.51	20,656.66	-	-	6,087,925.06
Adaptive Research Unit	6,210,606.81	818,639.93	163,727.98	932,911.90	303,210.79	42,120.00	404,880.00	396,080.00	9,272,177.41
Rubber Technology	8,026,917.05	1,100,839.34	220,167.87	1,239,140.41	123,387.02	61,379.66	404,880.00	388,080.00	11,564,791.35
RRPD & CE Dept	7,302,763.11	1,023,399.29	204,679.88	1,189,141.50	266,092.60	57,920.00	-	-	10,043,996.38
Bio Metry	3,627,745.48	509,563.64	101,912.73	494,723.95	77,218.18	21,310.96	404,880.00	388,080.00	5,625,434.94
RRI New Advisory Services Dept	19,063,379.96	2,866,239.22	540,058.71	2,862,411.61	99,052.17	331,997.79	383,640.00	371,760.00	26,518,539.46
Training Centre	935,128.54	127,050.08	25,410.02	160,186.00	31,341.64	5,640.00	-	-	1,284,756.28
Polymer Chemistry	5,712,123.45	751,113.08	150,222.61	864,868.42	107,838.54	47,730.47	-	-	7,633,896.57
Agriculture Economics	1,350,106.35	191,715.95	38,343.19	161,246.96	301.54	2,640.00	-	-	1,744,353.99
<b>SUB TOTAL</b>	<b>115,744,521.63</b>	<b>15,602,460.92</b>	<b>3,087,303.12</b>	<b>17,467,194.32</b>	<b>2,736,905.15</b>	<b>870,011.96</b>	<b>2,812,920.00</b>	<b>2,708,240.00</b>	<b>161,029,557.10</b>
<b>Other Departments</b>									
Library & Publication Unit	2,849,173.72	392,171.58	78,434.33	479,376.79	292,921.55	15,965.95	-	-	4,108,043.92
Director's Office	7,228,070.74	1,133,898.93	176,009.35	1,396,314.06	8,193.61	11,120.00	695,990.00	766,077.00	11,415,673.69
Internal Audit	2,278,219.80	272,259.95	54,451.99	352,701.80	6,400.90	18,680.00	-	-	2,982,714.44
Board Office	6,364,117.98	669,075.93	133,815.19	918,479.43	241,053.31	42,660.00	-	6,792.19	8,375,994.03
Administration	25,394,303.76	3,193,675.72	638,735.16	4,145,344.48	1,771,285.16	144,152.74	203,225.80	57,065.80	35,547,788.62
Finance (Accounts)	12,556,690.96	1,629,230.86	325,846.17	2,176,480.95	1,123,609.83	54,234.66	402,480.00	388,080.00	18,656,653.43
Stores	1,569,130.73	206,974.01	41,394.79	258,734.50	75,577.74	13,640.00	-	-	2,165,451.77
Maintenance (Work Section)	28,113,376.05	3,814,578.47	751,592.36	4,956,301.46	3,120,088.74	149,699.51	-	-	40,905,636.59
Electronic Repair Unit							-	-	-
<b>SUB TOTAL</b>	<b>86,353,083.74</b>	<b>11,311,865.45</b>	<b>2,200,279.34</b>	<b>14,683,733.47</b>	<b>6,639,130.84</b>	<b>450,152.86</b>	<b>1,301,695.80</b>	<b>1,218,014.99</b>	<b>124,157,956.49</b>
<b>Grand total</b>	<b>202,097,605.37</b>	<b>26,914,326.37</b>	<b>5,287,582.46</b>	<b>32,150,927.79</b>	<b>9,376,035.99</b>	<b>1,320,164.82</b>	<b>4,114,615.80</b>	<b>3,926,254.99</b>	<b>285,187,513.59</b>
Less : Computer Difference									(47.65)
									<b>285,187,465.94</b>

## DARTONFIELD ESTATE EXPENDITURE

Note 14A

Wages, Salaries & Employee Benefits	2018		2017	
Salaries & Wages etc	7,048,592.80		6,080,872.91	
EPF	4,495,986.96		3,991,454.90	
ETF	1,123,996.74		997,863.72	
Medical	1,057,289.59		926,899.33	
L/Wages	15,303,788.07		14,980,176.58	
Holiday pay	2,424,999.55		1,852,669.10	
Attendance Bounds	124,700.00		135,050.00	
<b>Total</b>		<b>31,579,353.71</b>		<b>28,964,986.54</b>
<b>Grants &amp; Other Transfer Payment</b>				
<b>Supplies &amp; Consumables Used</b>				
Tools	24,990.00		49,785.00	
Rain Guard	396,642.70		1,803,372.05	
Stimulation	136,996.17		66,578.27	
Tapping Utensils	95,400.00		133,095.00	
Chemicals	931,757.48		349,339.69	
packing Materials	30,210.07		33,685.00	
<b>Total</b>		<b>1,615,996.42</b>		<b>2,435,855.01</b>
<b>Depreciation &amp; Amortization Expenses</b>				
Fixed Assets	482,712.96		222,012.02	
Repenting	1,062,648.42		973,698.32	
<b>Total</b>		<b>1,545,361.38</b>		<b>1,195,710.34</b>
<b>Maintenance of Property, Plant &amp; Equipment</b>				
Supervisory Vehicle	1,489,664.94		995,197.26	
Stationery & Communication	765,503.76		898,907.62	
Bungalows	830,204.49		520,725.55	
Lines	210,530.33		191,682.67	
Miner Building Up-Keep	221,706.80		95,761.97	
Weeding	2,896,990.97		2,040,614.88	
Marking	100,182.50		160,730.00	
Tapping Panel Treatment	59,050.00		1,600.00	
Latex ( Transports)	697,141.43		829,798.89	
Fuel	218,414.76		328,528.43	
Factory Up-Keep	101,212.21		31,236.00	
Machinery Up-keep	48,080.58		31,236.00	
Factory Sundries	32,995.67		36,453.79	
Transport of Produce	265,350.24		147,299.61	
Water Supply			5,699.92	
<b>Total</b>		<b>7,937,028.68</b>		<b>6,315,472.59</b>
<b>Other Expenses</b>				
Contingencies	138,137.41		144,439.89	
Welfare & Sports	50,752.58		-	
Audit Fee	184,036.29		76,565.66	
Other	387,671.80		160,031.56	
<b>Total</b>		<b>760,598.08</b>		<b>381,037.11</b>
Other Expenditure Estate (Projects)				
<b>Finance Costs</b>				
Commission Cash Transport/Insurance	420058.28		362,647.18	
Bank Charges			2,250.00	
Insurance	59167.71		162,888.60	
<b>Total</b>		<b>479,225.99</b>		<b>527,785.78</b>
<b>Total Revenue expenditure</b>		<b>43,917,564.26</b>		<b>39,820,847.37</b>

**KURUWITA SUB STATION**

**Note 14 B**

**Wages, Salaries & Employee Benefits**

Description	2018 Rs.	2017 Rs.
Emolument	2,759,242.74	3,304,418.50
EPF	1,462,670.60	1,307,066.35
ETF	365,667.65	326,766.59
Medical	429,743.86	431,076.95
L/Wages - Tapping/other sundries	11,087,382.85	10,351,528.68
Overtime pay / Holiday pay	1,025,933.51	1,064,200.78
Attendance bonus	50,933.33	56,716.67
House rent		
<b>Total</b>	17,181,574.54	16,841,774.52
<b>Supplies &amp; Consumables Used</b>		
Tools	8,778.53	1,150.00
Rainguard	916,455.49	733,337.65
Stimulation	141,271.55	69,699.15
Tapping Utensils	97,970.00	87,900.00
Packing Materials		-
Fuel		-
Packing Materials	11,659.00	7,795.00
Chemical etc	326,497.17	180,600.00
<b>Total</b>	1,502,631.74	1,080,481.80
<b>Depreciation</b>		
Fixed Assets	305,587.69	321,385.71
Replanting	73,459.94	67,310.90
<b>Total</b>	379,047.63	388,696.61
<b>Maintenance of Property, Plants &amp; Equipment</b>		
Supervisory Vehicle	558,175.49	237,821.39
Stationery & Communication	459,554.46	153,258.70
Bungalows	273,782.34	576,179.74
Lines	149,046.05	157,351.64
Minor Building upkeep	162,618.40	79,971.37
Weeding	1,154,929.37	821,355.56
Marking	178,532.63	86,418.87
Tapping panel treatment	15,770.00	21,100.00
Latex transport	58,015.00	46,937.50
Fuel	136,771.43	105,065.46
Factory upkeep		-
Machinery upkeep	248,527.80	86,419.72
Factory sundries	45,664.20	34,933.00
Transport of Produce	42,888.59	47,135.30
<b>Total</b>	3,484,275.76	2,453,948.25
<b>Other Expenses</b>		
Contingencies	171,923.53	47,212.56
subscription & Visiting		32,391.00
Welfare	29,148.00	-
Audit fee	57,125.19	49,674.08
Legal		
Insurance		
<b>Finance Costs</b>	258,196.72	129,277.64
Legal		13,500.00
Commission on Cash	121,009.83	127,409.51
Insurance	48,530.90	63,518.09
<b>Total</b>	169,540.73	204,427.60
<b>Grand Total</b>	<b>22,975,267.12</b>	<b>21,098,606.42</b>

**MONARAGALA SUB STATION**

**Note 14 C**

Description	2018		2017	
	Rs.		Rs.	
Emolument	4,146,333.49	4,692,199.09	3,609,596.03	4,182,430.59
EPF	480,361.68		502,712.93	
ETF	65,503.92		70,121.63	
Supplies & Other Consumables used	991,944.34			
Other Expenses	179,836.00	1,171,780.34		631,188.63
<b>Total</b>		<b>5,863,979.43</b>		<b>5,109,377.47</b>

**POLGAHAWELA SUB STATION**

**Note 14 C**

	2018		2017	
	Rs.		Rs.	
Emolument	10,000.00	10,000.00	2,086,592.00	2,448,168.53
EPF			318,048.02	
ETF			43,528.51	
Supplies & Other Consumables used	269,284.04			
Other Expenses	121,815.00	391,099.04		398,536.72
<b>Total</b>		<b>401,099.04</b>		<b>2,922,276.83</b>



**Note 15 - TRAVELLING**

<b>Description</b>	<b>2018 Rs.</b>	<b>2017 Rs.</b>
<b>RESEARCH DEPARTMENTS</b>	<b>Travelling &amp; Subsistence</b>	
Plant Science	527,472.90	516,586.20
Plant Pathology	142,270.00	194,413.14
Genetics & Plant Breeding	751,017.86	412,907.82
Soils & Plant Nutrition	24,811.50	229,573.06
Raw Rubber & Chemical Analysis	116,360.07	79,285.00
Bio-Chemistry & Physiology	157,510.08	223,484.50
Adaptive Research Unit	108,810.00	42,010.57
Rubber Technology	207,292.00	99,834.00
RRPD & CE Dept	219,312.83	164,851.00
Bio Metry	48,427.50	57,704.66
Polymer Chemistry	96,956.75	118,489.00
Agriculture Economics	13,950.00	22,000.00
<b>Sub Total</b>	<b>2,414,191.49</b>	<b>2,161,138.95</b>

<b>OTHER DEPARTMENTS</b>	<b>2018 Rs.</b>	<b>2017 Rs.</b>
Library & Publication Unit	29,370.00	6,930.00
Director's Office	106,142.50	94,922.50
Internal Audit	50,642.00	28,328.62
Board Office	276,992.70	400,310.29
Administration	316,664.50	145,933.76
Finance (Accounts)	151,810.30	140,948.34
Stores	45,910.75	35,870.95
Maintenance (Work Section)	1,959,707.00	1,400,003.78
RRI New Advisory Services Dept	1,552,359.61	1,441,168.19
Training Centre	6,707.00	3,603.00
<b>Sub Total</b>	<b>4,496,306.36</b>	<b>3,698,019.43</b>
<b>Grand Total</b>	<b>6,910,497.85</b>	<b>5,859,158.38</b>

**Note -16 - SUPPLIERS AND CONSUMABLES**

**RESEARCH DEPARTMENTS** **OTHER EXPENSES**

Description	2018 Rs.	2017 Rs.
Plant Science	382,716.77	109,749.37
Plant Pathology	275,952.70	1,053,906.15
Genetics & Plant Breeding	353,393.60	55,574.88
Soils & Plant Nutrition	246,507.51	84,192.13
Raw Rubber & Chemical Analysis	274,292.14	138,480.82
Bio-Chemistry & Physiology	242,595.87	45,659.28
Adaptive Research Unit	272,648.84	34,741.43
Rubber Technology	268,873.93	101,619.71
RRPD & CE Dept	266,033.78	128,332.79
Bio Metry	13,974.49	85,093.21
Polymer Chemistry	255,364.13	45,056.61
Agriculture Economics	232,977.14	9,637.78
<b>SUB TOTAL</b>	<b>3,085,330.90</b>	<b>1,892,044.16</b>

**OTHER DEPARTMENTS**

Library & Publication Unit	102,112.46	545,191.60
Director's Office	33,355.40	61,044.67
Internal Audit	500.00	14,739.37
Board Office	43,386.77	1,155,987.45
Administration	470,994.43	348,267.93
Finance (Accounts)	49,694.00	174,777.05
Maintenance (Work Section)	389,264.58	567,117.21
RRI New Advisory Services Dept	497,281.46	621,031.42
Training Centre	579,534.57	345,705.63
Stores	36,945.39	48,013.93
Electronic Repair Unit		
<b>SUB TOTAL</b>	<b>2,203,069.06</b>	<b>3,881,876.26</b>
L.P gas for Bungalows	382,399.37	312,236.00
Fuel & Lubricants	6,193,347.23	5,395,303.42
Stationery and Office Requisites	1,130,824.84	529,914.67
Medical Expenses	467,463.12	466,404.50
<b>SUB TOTAL</b>	<b>8,174,034.56</b>	<b>6,703,858.59</b>
<b>GRAND TOTAL</b>	<b>13,462,434.52</b>	<b>12,477,779.01</b>

**DEPRECIATION OF NON CURRENT ASSETS**

**Note-17**

**CATEGORY OF ASSETS**

		<b>Percentage</b>	<b>Rs.</b>	<b>Rs.</b>	<b>Depreciation method</b>
<b>Description</b>		<b>2018 Rs.</b>	<b>2017 Rs.</b>		
Buildings	2.5%	2,839,564.33	2,595,800.76		Reducing Balance method
Intangible Assets	20%	352,715.75	185,900.00		
Furniture, Fittings & Office Equipment	20%	3,830,962.54	3,218,673.07		"
Power & Water Supply	10%	276,997.37	224,766.26		"
Machinery & Tools	12.5%	338,786.49	300,981.37		"
Lab Apparatus	20%	17,085,553.02	11,852,398.32		"
Motor Vehicles	20%	5,183,229.98	6,165,020.95		"
Library Books	20%	359,251.26	439,933.19		"
Documentary Film	12.5%	26.12	-		"
Earth Slip Project	4.00%	3,453.60	3,597.49		"
Other assets	10%	965,988.87	849,035.58		"
Effluent Treatment Plant	4.0%	325,160.84	338,709.21		"
Audio Visual Equipment	20.0%	176,533.28	145,223.04		"
Road Development	10.0%	1,050,465.05			
Total		<b>32,788,688.50</b>	<b>26,320,039.25</b>		
<b>Less:</b>					
Dartonfield Estate - Depreciation		(482,712.96)	(321,385.71)		"
Kuruwita Estates - Depreciation		(305,587.69)	(222,012.02)		"
		<b>32,000,387.85</b>	<b>25,776,641.52</b>		
<b>Less: Amortization</b>		-	-		
		<b>32,000,387.85</b>	<b>25,776,641.52</b>		

**Note 18 - MAINTENANCE**

<b>Description</b>	<b>2018 Rs.</b>	<b>2017 Rs.</b>
Office & General Building Repair & Maintenance	1,517,736.92	2,311,043.94
Maintenance of Auditorium	167,679.39	84,487.45
Maintenance of Bungalows	2,974,332.34	3,911,893.54
Bungalow Premises & Compounds	8,066,357.38	8,277,575.15
Maintenance of Plant & Machinery	72,977.10	-
Furniture, Fixtures & Fittings	73,800.00	41,595.00
Institute General Building Premises & Compounds	862,838.53	961,286.76
RRI Ratmalana Building Premises Upkeep-Maintenance	323,258.92	66,065.27
Maintenance Tools	4,560.00	580.00
Maintenance of Computer (Note 32A)	1,901,274.20	1,548,183.33
Computer Network	851,060.61	483,451.56
Maintenance Of Computer -Agri. Econ.	25,900.00	

**OPERATIONAL EXPENDITURE VEHICLES**

Servicing of Vehicles		170,865.85
Repairs & Maintenance	5,154,767.90	4,612,492.81
<b>Total</b>	<b>21,996,543.29</b>	<b>22,469,520.66</b>

**Note 18 - A****RESEARCH DEPARTMENTS**

<b>Description</b>	<b>2018 Rs.</b>	<b>2017 Rs.</b>
Plant Science	88,636.15	-
Plant Pathology	62,301.78	-
Genetics & Plant Breeding	62,321.76	-
Soils & Plant Nutrition	97,549.66	-
Raw Rubber & Chemical Analysis	-	-
Bio-Chemistry & Physiology	-	-
Adaptive Research Unit	33,928.17	-
Rubber Technology	15,900.00	-
RRPD & CE Dept	52,805.00	-
Bio Metry	123,280.51	-
Polymer Chemistry	33959	-
Agriculture Economics		-

**OTHER DEPARTMENTS**

Library & Publication Unit	25,530.00	-
Director's Office	18321.94	-
Internal Audit	26,368.50	-
Board Office	45638.43	-
Administration	617,828.68	-
Finance (Accounts)	397,423.67	-
Maintenance (Work Section)	90,655.06	-
RRI New Advisory Services Dept	8,747.54	-
Training Centre	55,662.50	-
Stores	12,934.12	-
Audio Visual Unit	31,441.73	-
<b>TOTAL</b>	<b>1,901,234.20</b>	

**ADMINISTRATION - GENERAL CHARGES - 2018**

**Note-19 -**

<b>CONTRACTUAL SERVICES</b>	<b>2018 Rs.</b>	<b>2017 Rs.</b>
Legal Expenses	333,558.00	924,791.24
Audit Fees	1,055,355.00	-
IRRDB Expenses	1,498,852.98	220,146.52
Entertainment Expenses	58,910.70	500,400.50
Entertainment Expenses	626,468.90	-
Environment Protection	-	-
Insurance General Covers(Excluding vehicles)	2,299,627.94	2,011,770.12
Welfare and Recreation	301,587.23	227,413.83
Railway Concessionary Season Tickets	-	-
Conference/Seminars	-	13,800.00
Bank Charges	-	69,100.00
Security Charges - RRI	1,516,398.06	1,368,349.70
Postage	214,745.34	83,775.00
Telephone	6,691,093.62	4,998,064.92
Advertisements	1,740,260.25	1,742,562.50
Transport & Handling Charges	1,051.32	4,840.00
Sundries & Utility Services	29,347.31	504,917.81
Staff Training & Development	8,492,987.27	8,267,070.25
Fees For Interview Panels	57,100.00	247,736.75
Provident Fund Expenses-RRI Component	28,625.00	33,440.00
Public Relations	13,801.04	7,537.20
Honorarium to Members Attending AMCOM	95,120.00	142,457.00
Honorarium to Members Attending for Board	472,832.80	-
Police Escort Expenses	-	-
Customs Duty/ clearing Charges	-	71,197.00
Deyata Kirula Exhibition	-	-
ETF Surcharge	-	-
Photo Copier Maintenance	-	181,072.27
Gratuity for the Year	19,898,154.00	30,065,225.00
Staff Gratuity Polgahawela	122,640.00	150,780.00
Staff Gratuity Monaragala	194,180.00	454,020.00
Power Supply & Maintenance	9,073,147.54	8,031,196.21
Water Supply & Maintenance	1,230,629.52	1,242,618.18
Upkeep & Maintenance of Guest Houses (DF & KW)	-	1,122,557.52
Revenue Licenses, Insurance Covers, Fitness fees &	533,741.63	283,762.28
External Vehicles Hired	1,702,948.00	1,143,882.00
Rent & Taxes	32,786.87	105,860.27
Contingencies & General Ex.	-	-
Inland Revenue Stamp Duty	3,250.00	125,050.00
Sundry Expenses	479,182.24	4,142.00
Stocks Adjustment A/C - DF	-	879,832.18
Stocks Adjustment A/C - RT	-	670,395.12
Staff Disciplinary Inquiry Expences	-	8,250.00
General Expenses BO	86,974.40	-
Library & Publication Unit-Working Expenses	502,825.00	-
Guest House – Hostel RRI D/F & Kuruwi	1,196,281.82	-
Subscriptions	170,308.50	-
COL Arreas Payment for PF Members	-	30,522,787.40
Administration Sundries	1,009,407.88	-
Bad Debtors & Doubtful Debtors	178,419.86	-
General Expenses DO	29,367.00	-
General Expenses OI	14,433.48	-
NRC Project	50,312.50	-
Rathmalana Stocks A/C Adjusment A/C	225,825.51	-
Stocks Adjusment A/C	1,970,494.60	-
Working Experience BM	38,873.64	-
Working Experience G & PB	943.00	-
Working Experience LIB	329,088.83	-
Working Experience NAS	530,818.00	-
<b>Total</b>	<b>65,132,756.58</b>	<b>96,430,800.77</b>

**EXPENDITURE -RESEARCH AND DEVELOPMENT**

**Note -20 Research Departments**

Description	Laboratory Working	Field Working	Total	Laboratory Working	Field Working	Total
	Rs.			Rs.		
	2018			2017		
Plant Science	278,835.68	3,447,242.36	3,726,078.04	683,169.63	3,525,978.41	4,209,148.04
Plant Pathology	1,092,310.05	701,826.22	1,794,136.27	2,381,396.11	605,212.07	2,986,608.18
Genetics & Plant Breeding	482,630.18	2,972,045.92	3,454,676.10	71,949.50	2,038,820.33	2,110,769.83
Genetics & Plant Breeding- Germplasm Project	5,654,744.14		5,654,744.14		5,651,070.97	5,651,070.97
Soils & Plant Nutrition	518,082.48	790,310.35	1,308,392.83	515,698.05	1,021,958.35	1,537,656.40
Raw Rubber & Chemical Analysis	762,686.04	28,611.19	791,297.23	1,350,459.34	0.00	1,350,459.34
Bio-Chemistry & Physiology	265,101.16	1,235,693.19	1,500,794.35	914,201.01	888,842.53	1,803,043.54
Adaptive Research Unit	2,220.00	95,667.80	97,887.80	2,028.40	148,639.78	150,668.18
Rubber Technology	884,969.87		884,969.87	154,992.67	4,700.00	159,692.67
RRPD & CE Dept	657,431.10	14,135.00	671,566.10	662,526.19	53,232.00	715,758.19
Bio Metry		21,742.24	21,742.24	-	426.14	426.14
Polymer Chemistry	614,185.91	2,611.24	616,797.15	406,632.75	5,834.89	412,467.64
Tapping Marking Plates Expenses			-	-	-	-
Rubber Cultivation Expenditure			-	-	-	-
Analytical Charges and Other Testing			-	-	-	-
Sails & Foliar Analysis Fee			-	-	-	-
Advisory Services Dept.		3,403.70	3,403.70			
Rubber Re-Planting Ex.	3,544,190.47		3,544,190.47	4,989,132.54		4,989,132.54
			-	254,663.30		254,663.30
Land & Land Improment	42,900.00		42,900.00	295.00		295.00
Land & Land Improment			-	10,240.00		10,240.00
Land & Land Improment			-	45,910.00		45,910.00
Negenahira Navodaya	-	284,919.38	284,919.38	850,964.75		850,964.75
Northern Province Expenses	-	474,835.00	474,835.00	-	623,346.30	623,346.30
			-	374,007.02		374,007.02
<b>SUB TOTAL</b>	<b>14,800,287.08</b>	<b>10,073,043.59</b>	<b>24,873,330.67</b>	<b>13,294,259.24</b>	<b>13,944,715.47</b>	<b>27,238,974.71</b>
Vote 23.02.15 White Root Dieases	4,680,866.95	-	4,680,866.95			
Vote 03.63G 60Million Project	14,814,428.17	-	14,814,428.17			
Vote 03.63H Developing A Model Estate	17,544,184.08	-	17,544,184.08			
Vote 03.63K Modification Of Fertilizer Recomm	1,400,719.98	-	1,400,719.98			
03.63L Finite Element Analysing Center	7,344,264.61	-	7,344,264.61			
Vote 03.63M Accreditation Of RRCA	145,000.00	-	145,000.00			
<b>SUB TOTAL</b>	<b>45,929,463.79</b>	<b>-</b>	<b>45,929,463.79</b>			
<b>TOTAL</b>	<b>60,729,750.87</b>	<b>10,073,043.59</b>	<b>70,802,794.46</b>	<b>13,294,259.24</b>	<b>14,942,068.79</b>	<b>28,236,328.03</b>
Vote 38.02.17 Carban Market	298,643.00	-	298,643.00			
22.01.17 Intercropping	4,809,424.92	-	4,809,424.92			
Vote 36.01.17 Low Intensity Harvesting	6,239,481.05	-	6,239,481.05			
Vote 23.02.17 Pest & Desiases	2,274,170.65	-	2,274,170.65			
<b>SUB TOTAL</b>	<b>13,621,719.62</b>	<b>-</b>	<b>13,621,719.62</b>			

**Note -21**      **OTHER OPERATING EXPENSES**

<b>Description</b>	<b>2018.</b>	<b>2017</b>
	<b>Rs.</b>	<b>Rs.</b>
Medical Centre Labor	218,128.62	-
Sanitation	-	638,339.43
Roads, Fences & Boundaries	1,852,679.58	1,789,323.66
Watchmen & Gate Watchers	4,401,492.34	4,067,142.08
<b>Total</b>	<b>6,472,300.54</b>	<b>6,494,805.17</b>



**DARTONFIELD GROUP ESTATE WORKING ACCOUNT FOR THE YEAR ENDED 2018**

**Note 22**

Description	2018 Rs.	2017 Rs.
Sales of Rubber Kg 176136	53,963,485.84	51,792,546.85
2018.01.01 Stock kg 18,688	4,305,000.00	5,449,980.00
	58,268,485.84	57,242,526.85
2018.12.31 Stock (kg 23,464)	(4,922,980.00)	(4,305,000.00)
Gross Profit	53,345,505.84	52,937,526.85
<b>Add :-</b>		
Sundry Receipts	1,694,975.00	1,885,612.93
Rubber Replant Subsidy	744,949.54	380,770.74
Tea Green Leaf Sale	391,184.22	886,748.11
Other Receipts	617,980.00	
Rain Guard Subsidy	- 3,449,088.76	1,684,115.00 4,837,246.78
	56,794,594.60	57,774,773.63
<b>Less :</b>		
<b>Expenses</b>		
Wages, Salaries and employee benefits (Note 14A)	31,579,353.71	28,964,986.54
Supplies and Other consumables used (Note 14A)	1,615,996.42	2,435,855.01
Depreciation and amortization expenses (Note 14A)	1,545,361.38	1,195,710.34
Maintenance of property, plant and equij (Note 14A)	7,937,028.68	6,315,472.59
Other expenses (Note 14A)	760,598.08	381,037.11
Finance Costs (Note 14A)	479,225.99 43,917,564.26	527,785.78 39,820,847.37
Other Expenditure Estate (Projects) (Note 14A)	-	5,476,551.06
<b>Other Expenditure Projects</b>		
Tea Green Leaf Expenditure		866,685.88
Cinnamon Expenditure		330,726.65
1980/93 Rubber Field Ex.		1,197,412.53
Surplus for the period	<b>12,877,030.34</b>	<b>11,279,962.67</b>

**Kuruwita Estate Working Account for the Year Ended 2018**

**Note 23**

Description	2018 Rs.	2017 Rs.
<b>Revenue</b>		
Sales of Latex & Scrap	27,150,560.14	25,196,451.06
<b>Other Revenue</b>		
<u>Add :-</u>		
Sundry Receipts	6,537,565.00	493,404.18
Rubber Replanting Subsidy	1,170,520.00	697,610.34
Cinnamon Income	7,708,085.00	- 1,191,014.52
<b>Total Revenue</b>	34,858,645.14	<b>26,387,465.58</b>
<b>Less :</b>		
<b>Expenses</b>		
Wages, Salaries and employee benefits (Note 14B)	17,181,574.54	16,841,774.52
Supplies and consumables used (Note 14B)	1,502,631.74	1,080,481.80
Depreciation and amortization expenses (Note 14B)	379,047.63	388,696.61
Maintenance of Property, Plants & Equip (Note 14B)	3,484,275.76	2,453,948.25
Other expenses (Note 14B)	258,196.72	129,277.64
Finance Costs (Note 14B)	169,540.73 22,975,267.12	204,427.60 21,098,606.42
<b>Surplus for the Period</b>	<b>11,883,378.02</b>	<b>5,288,859.16</b>

**KUMARAWATTA ESTATE WORKING ACCOUNT FOR THE YEAR ENDED 2018**

**Note 24**

<b>Description</b>	<b>2018 Rs.</b>	<b>2017 Rs.</b>
Sales of Income	9,020.00	10,367.50
Rubber Re-Planting Subsidy	-	-
<u>Less :-</u>		
Wages, Salaries and employee benefits	(4,692,199.09)	(4,182,430.59)
Supplies & Other Consumables used (Note 14C)	(991,944.34)	(295,758.25)
Other Expenses	(179,836.00)	(631,188.63)
Nursery Project Monaragala	(3,840.00)	
<b>Loss for the Year Rs.</b>	<b>(5,858,799.43)</b>	<b>(5,099,009.97)</b>

**NARAMPOLA ESTATE WORKING ACCOUNT FOR THE YEAR ENDED 2018**

**Note 25**

<b>Description</b>	<b>2018 Rs.</b>	<b>2017 Rs.</b>
Rubber Sales	92,438.50	1,337,154.24
Rubber Re-Planting Subsidy	-	45,262.55
	92,438.50	1,382,416.79
<u>Less :-</u>		
Wages, Salaries and employee benefits	(10,000.00)	(2,448,168.53)
Supplies & Other Consumables used (Note 14C)	(269,284.04)	(75,571.58)
Other Expenses	(121,815.00)	(398,536.72)
<b>Rs.</b>	<b>(308,660.54)</b>	<b>(1,539,860.04)</b>

**NSF GRANTS OF SCHEDULES TO THE ACCOUNTS FOR THE YEAR ENDED 31.12.2018**

**Note 26**

Description	Votes No.						
	03.30M	03.30X	03.30I	03.30U	03.30Y	42.01.15	Total
Opening Balance		378,191.52	356,001.00	386,761.71	1,011,803.39	4,751,507.00	6,884,264.62
<b>Add :</b>							-
Fund Received		732,558.00	-		216,125.00	2,091,440.00	3,040,123.00
							-
	-	1,110,749.52	356,001.00	386,761.71	1,227,928.39	6,842,947.00	9,924,387.62
<b>Less :</b>							
Expenditure for the Year 2018	-	1,147,591.17	-	269,638.20	945,787.18	2,457,962.26	4,820,978.81
Fund Transfer to NSF							-
	-	1,147,591.17	-	269,638.20	945,787.18	2,457,962.26	4,820,978.81
<b>Balance as at 31.12.2018</b>	-	(36,841.65)	356,001.00	117,123.51	282,141.21	4,384,984.74	5,103,408.81

NSF GRANTS OF SCHEDULES TO THE ACCOUNTS FOR THE YEAR ENDED 31.12.2018

**Note 26B**

Description	Vote 23.02.15 White Root Dieases	Vote 03.63G 60Million Project	Vote 03.63H Developing A Model Estate	Vote 03.63K Modification Of Fertilizer Recomm	03.63L Finite Element Analysing Center	Vote 03.63M Accreditation Of RRCA	Vote 38.02.17 Carban Market	22.01.17 Intercropping	Vote 36.01.17 Low Intensity Harvesting	Vote 23.02.17 'Pest & Desiases	Total
Opening Balance	3,918,558.87	37,109,215.50	3,122,651.99	3,702,516.82	49,700,000.00	-		-	-	-	97,552,943.18
<b>Add :</b>											-
Fund Received	<b>3,995,000.00</b>	<b>28,886,588.97</b>	<b>36,840,000.00</b>	<b>16,480,000.00</b>	72,590.00	<b>2,600,000.00</b>					88,874,178.97
	<b>7,913,558.87</b>	<b>65,995,804.47</b>	<b>39,962,651.99</b>	<b>20,182,516.82</b>	<b>49,772,590.00</b>	<b>2,600,000.00</b>	-	-	-	-	<b>186,427,122.15</b>
<b>Less :</b>											
Expenditure -R&D	4,680,866.95	<b>14,814,428.17</b>	17,544,184.08	1,400,719.98	<b>7,344,264.61</b>	145,000.00	298,643.00	4,809,424.92	6,239,481.05	2,274,170.65	45,929,463.79
Expenditure -Capital	-	29,323,007.91	-	-	36,684,565.71	-	-	-	-	-	66,007,573.62
Expenditure -Total	4,680,866.95	44,137,436.08	17,544,184.08	1,400,719.98	44,028,830.32	145,000.00	298,643.00	4,809,424.92	6,239,481.05	2,274,170.65	125,558,757.03
<b>Balance as at 31.12.2018</b>	<b>3,232,691.92</b>	<b>21,858,368.39</b>	<b>22,418,467.91</b>	<b>18,781,796.84</b>	<b>5,743,759.68</b>	<b>2,455,000.00</b>	<b>(298,643.00)</b>	<b>(4,809,424.92)</b>	<b>(6,239,481.05)</b>	<b>(2,274,170.65)</b>	<b>60,868,365.12</b>

**RUBBER RESEARCH BOARD OF SRI LANKA**

**SCHEDULE TO THE STATEMENT OF FINANCIAL PERFORMANCE AS AT 31ST DECEMBER 2018**

**INVENTORIES/ STOCKS - RRI**

**SCHEDULE 01**

	<b>2018</b>	<b>2017</b>
	<b>Rs.</b>	<b>Rs.</b>
Stock - Dartonfield	4,922,980.00	5,449,980.00
Stock - Rathmalana	617,080.68	817,385.63
Stationary	470,453.03	1,043,499.96
Stock - General	9,780,419.75	8,751,547.65
Stock in obsolete	489,004.07	489,004.07
Non Moving Stock	434,249.35	434,249.35
Monaragala Stock	123,014.00	135,597.00
polgahawela Stock	77,519.00	83,744.38
<b>Total</b>	<b>16,914,719.88</b>	<b>17,205,008.04</b>

## SCHEDULE 02 - KURUWITA ESTATE STOCK

Fertilizer	2018		2017	
	Qty.(kg)	Rs.	Qty.(kg)	Rs.
Sodium bi sulphate	25 kg	7,255.48	11.00 Kg	1,793.85
Sulphate of Potash	5 kg	734.40	-	
Fomic acid	105 Ltrs.	33,900.70	105Kg	20,400.00
Sodium sulphate	50 kgs	17,812.07	50 Kg	8,400.00
L.P.Gas	1 No.	1,775.00	-	
China Clay	150 kg	2,992.35	-	
Polythene	147 kgs	48,247.94	149.80 Kg	45,811.85
Poly bags	25000 Nos.	58,411.20	10000 Nos	2,449.93
T/Cells	6 Nos.	360.00	-	
Tapping Knives	2 Nos.	1,130.00	7 Nos	3,955.00
Jack Pole (3x4)			60.5 Lft	19,687.17
Timber	1846.5 Ft	115,477.17	-	
Sulpher	5 kg		3.2Kg	352.00
Fungicide			1.3 Kg	2,449.93
Weedicide	8 Ltrs.	19,000.00		
Equl Broom	5 Nos.	650.00		
E/Bulbs	11 Nos.	930.00		
CFL Bulbs	3 Nos.	1,672.50		
Cement	2 Nos.	1,595.00	02bags	1,772.50
<b>Total</b>		<b>330,056.48</b>		<b>164,571.00</b>

**SCHEDULE 03 - STOCK VALUE - DARTONFIELD ESTATE**

Item	2018		2017	
	Qty (Kg)	Value (Rs)	Qty (Kg)	Value (Rs)
Sodium Bi Sulphite	-	-	-	-
Sodium Sulphite	-	-	-	-
Formic Acid	35 Lits	11,300.18	-	-
Policer	-	-	-	-
Urea	-	-	414 Kg	9,581.24
Kieserite	-	-	-	-
Cinnamon Manure	-	-	50 Kg	14,862.80
Dolomite	512 Kg	33,397.73	512.8 Kg	28,897.73
RU 465 N.P.K.	5502 Kg	228,786.20	9250 Kg	381,646.38
M.O.P	-	-	378 Kg	8,737.58
Sulper	-	-	-	-
C.E.S	-	-	10 Kg	225.00
D.A.P	-	-	10 Kg	225.00
S.O.A	-	-	10 Kg	225.00
S.O.P	-	-	10 Kg	225.00
Poultry	-	-	-	-
Weighing Scale	-	-	-	-
Di Amonia Posphate	-	-	-	-
Tar	2855 Ltrs	167,268.59	2855 Lit	167,268.59
Coir Brooms	4 Nos	520.00	-	-
Brass Screws	-	-	-	-
P.V.C.Pipe	-	-	-	-
Plain Sheet	-	-	-	-
Bitumen (tar)	-	-	-	-
Wire Nails	-	-	-	-
Auticomonsive Paint	-	-	-	-
Bend 4"	-	-	-	-
China clay	100 Kg	16,686.52	850 Kg	14,660.71
Poly Bags	28750 Nos	71,105.43	28750 Nos	86,075.00
Etheral	24 Litr	20,592.00	22.35 Lit	33,309.17
Fire Wood	35 Yrds	15,658.41	88 Yrd	31,417.27
Eckel Brooms	-	-	-	-
Polythene rain guard	140 Kg	46,098.37	140.3 Kg	46,098.37
Down Pipe (180 LF)	-	-	-	-
End Cap 1/f	-	-	-	-
Timber 3" x 4"	1,466 Ft	51,803.25	48 Lft	2,880.00
Timber 3" x 5"			117 Lft	8,775.00
Timber			-	-
Timber 2" x 4"			140 Lft	5,005.00
Timber 2" x 2"			426.25 Lft	7,246.25
Timber 1" x 9"			115 Lft	5,197.50
Timber 1 1/8" x 4"			-	-
Timber 2" x 1"			167.75 Lft	7,115.00
Timber 2" x 2.5"			-	-
Timber 1" x 1/8"			140.9 Lft	9,158.50
Timber 2"x 1 1/2"			357 Lft	6,426.00
Cement	-	-	-	-
Gutter Box	4 Nos	2,783.76	4 Nos	2,783.76
V Belt	-	-	-	-
Gutter (Color)	60 Nos	7,440.60	60 Lft	7,440.60
U.709	450 Kg	21,770.85	450 Kg	21,770.85
Rain guard sealent	452.8 Kg	51,267.22	452.78 Kg	51,267.22
LDPE 600X300Polythene	-	-	-	-
<b>Total</b>		<b>746,479.11</b>		<b>958,520.52</b>



**SCHEDULE 04****DEPOSITS**

<b>Description</b>	<b>2018 Rs.</b>	<b>2017 Rs.</b>
Telecom	6,000.00	6,000.00
Electricity	90,500.00	90,500.00
Post Master General	6,706.57	12,376.91
New Bambalapitiya Service Station	4,000.00	4,000.00
Ceylon Oxygen Co. Ltd.	113,316.00	113,316.00
Tender	2,000.00	2,000.00
Lanka Filling station-Narahenpita	15,000.00	15,000.00
Leo Freight Services(Pvt) Ltd	3,801.00	3,801.00
M.P.C.S. Matugama (Fuel)	250,000.00	74,500.00
M.P.C.S. Moratuwa (Fuel)	50,000.00	50,000.00
S.P.Lanka Petroleum (Pvt) Ltd	70,000.00	-
B.K.S. Filling Station,Moratuwa	50,000.00	-
Samaranayake & Samaranayake	-	50,000.00
<b>Total</b>	<b>661,323.57</b>	<b>421,493.91</b>

**SCHEDULE TO THE STATEMENT OF FINANCIAL PERFORMANCE AS AT 31ST DECEMBER 2018**

Description	2018 Rs.	2017 Rs.
<b>SCHEDULE 05</b>		
<b>OTHER DEBTORS</b>		
Mr.Thurul Warnakula	936,278.34	-
Mr.D.E.D.E.I.N.Perera	350,000.65	-
Mrs. Dilini Galpaya-DR	1,516,750.98	-
	<b>2,803,029.97</b>	<b>-</b>
<b>TRADE DEBTORS</b>		
General Debtors	<b>756,190.67</b>	<b>2,664,769.79</b>
<b>SUNDRY DEBTORS</b>		
Provident Fund Control A/C RRI	2,385,663.00	2,717,028.58
Interest Receivable	11,044.52	11,331.51
Handy Craft Project	57,235.25	57,235.25
N.S.F.Grant RG/2012/AG/06	37,725.56	37,725.56
RRI/TRI/CRI Symposium	1,234,964.00	629.15
'N.S.F. Grant RG/2016/AG/01		
<b>Total</b>	<b>3,726,632.33</b>	<b>2,823,950.05</b>
<b>LOAN RECEIVABLES</b>		
		<b>2017</b>
Motor Car / Motor Car Repair Loan	136,250.00	196,250.00
Motor Cycle Loan	39,166.51	49,166.47
Personal/Distress/Study Loan	134,546.68	40,356.11
New Personal Loan	2,599,541.34	1,192,480.52
Staff Medical Fund Loan		34,973.64
Loan Receivables - Disaster Loan	596,452.40	954,323.84
<b>Total</b>	<b>3,505,956.93</b>	<b>2,467,550.58</b>
<b>Note</b>		
<b>Bond Debtors</b>	<b>Balance as at 31.12.2018</b>	<b>Balance as at 31.12.2017</b>
H .H. Thalgaswatta	38,402.56	38,402.56
B.P.Weera rathna	1,825,654.55	1,825,654.55
N.A.A.D.Wickramarathna	-	7,245.46
JACSG Gunawardana	-	2.00
Samanthie P Herath	-	25,000.00
SMCE Silva	1,635,005.85	1,635,005.85
Nalinda P Wicramasinghe	10,643.54	10,643.54
G.V.L.Nilmini	-	1,084,612.81
<b>Total</b>	<b>3,509,706.50</b>	<b>4,626,566.77</b>

**SCHEDULE 06****DOUBTFUL DEBTORS**

Rs

Period of outstanding	Description	Balance	Provision Made	Provision
Less than one year	Other Debtors	2,803,029.97	Nil	
	General Debtors	756,190.67	Nil	
	Debtors	3,726,632.33	Nil	
2015 to 2017	General Debtors	2,664,769.79	5%	133,238.49
	Debtors	2,823,950.05	5%	141,197.50
Up to 2015	Debtors	23,349,076.55	100%	23,349,076.55
Total		36,123,649.36		23,623,512.54

**KURUWITA ESTATE**  
**TRADE & OTHER RECEIVABLE**

**SCHEDULE 07**

Description	2018	2017
	Rs.	Rs.
Check Roll Debts	15,564.37	15,564.37
Festival Advance ( Staff)	130,000.00	130,000.00
Festival Advance		4,900
Deposit A/c	35,728.94	
Postage	443.00	388.00
St.Joachime Estate	63,902.83	96,524.28
Sundry Debtors	9,176.49	9,176.49
Paper Project	22,971.09	
Electricity Bills Receivables	12,090.32	14,520.00
Fire Wood		
Book Allowance	400.00	400.00
Payment in Advance		1,950.00
	<b>290,277.04</b>	<b>273,423.14</b>

**DARTONFIELD ESTATE**  
**TRADE & OTHER RECEIVABLE**

Description	2,018.00	2017
	Rs.	Rs.
Adaptive Research Unit	-	-
Check Roll debtors	53,195.84	74,655.01
Deposit A/c (Df)	2,690.00	2,690.00
National Institute of Plantation Management	66,066.14	66,066.14
Personal Loan		16,432.41
Postage Stamp	140.00	5.00
Pry Month Rubber Industries	6,100.00	6,100.00
Festival Advance - Staff		273,000.00
Tamil Festival Advance	12,300.00	617,300.00
Vogen Estate	191,949.77	56,203.88
Festival Advance Christmas	108,400.00	124,550.00
Special Festive Advance		16,350.00
Project GPB / NC / 2014 A/C		992,926.00
Factory chemical Balance	28,610.74	59,482.87
Drying Tower Repair A/C		-
Co-Operative Society	16,125.00	16,125.00
Special Salary advance	46,189.36	46,189.36
Special Festive Advance	4,550.00	4,550.00
L.J.E.W.U,		38,352.00
Whiteroot controlling Project		117,074.83
Kuruwita Sub Station	359,000.00	359,000.00
Supdt Jeep Repair		-
Festival Advance 18/19 (Df)	266,750.00	-
Payment in advance	14,961.73	-
Festival Advance -Deepavali	582,000.00	
Other Receivable	527,000.00	
Festival Advance - Sinhala	10,000.00	
Receivable A/c	3,258,122.16	1,368,074.39
	<b>5,554,150.74</b>	<b>4,255,126.89</b>

**CREDITORS 2018**

**SCHEDULE 08**

<b>Description</b>	<b>2018 Rs.</b>	<b>2017 Rs.</b>
Creditors Ledger Control A/C (C L C)	5,565,110.85	4,081,799.37
<b><u>SUNDRY CREDITORS</u></b>		
Biometry Project - Climate Change on Rubber	16,338.28	16,338.28
Canteen Deposits	13,500.00	13,500.00
Carbon Market Project	118,108.57	118,108.57
Centre for Poverty Analysis	1,841.25	1,841.25
Contract Deposits	15,350.00	15,350.00
Divineguma B461	1,063,933.42	1,063,933.42
G.S.I.Mapping of Tea & Rubber Lands on Galle Dis.	155,000.00	155,000.00
Humate Plus Experiments	22,101.50	22,101.50
I.R.R.D.B.Plant Breeding Workshop	294,552.18	294,552.18
Insurance Claim Received	19,285.71	19,285.71
Intercropping Research (Sadaharitha Plantation)	87,243.75	87,243.75
Medical Fund Reserve RRI Staff	-	56.00
Moratuwa University	1,025,768.00	1,025,768.00
National Science Foundation NSF/RAP/2001/RRI/01	705.96	705.96
National Workers Congress	67,497.50	67,497.50
NSF - PG/99/C/7	5,637.68	5,637.68
NSF - SIDA/98/EP01	95,014.85	95,014.85
Payee Tax	141,777.67	57,446.31
Plant Science Intercropping Unit (Essex U.K)	21,731.55	21,731.55
Plantation Development Project	328,819.09	328,819.09
Postgraduate Institute of Peradeniya	24,640.00	24,640.00
Provident Fund Account - RDD	134,501.49	1,958,812.20
R.D.D.Kegalle	23,318.75	23,318.75
RDD (Salary Arrears)	92,837.57	92,837.57
RDD Nursery - Gampaha	45,000.00	45,000.00
RDD Staff Payments & Recoveries Control A/C	1,621.72	1,621.72
Receipt in Adr(Welfare)	595.00	595.00
Receipt in Advance (stamp)	271,645.00	271,645.00
Receipt-in -Advance A/C (J.I C.A)	208,297.09	208,297.09
Ru: Ban: Intercropping Programme Ecology UK (D F I D)	542,618.53	542,618.53
Staff Fire Wood A/C	10,813.24	10,813.24
Tender Deposits	3,887,624.34	1,822,124.34
Vitex Project	9,288.79	9,288.79
White root Diseases Research Project Sweden	25,717.80	25,717.80
Sundry Creditors	2,308,355.63	2,483,427.47
Creditors Clearance A/C	4,455,765.03	4,455,765.03
Staff Creditors	337,522.09	726,026.12
Sloar Assisted Sheet Rubber Dryer	275,000.00	165,000.00
<b>Total</b>	<b>21,714,479.88</b>	<b>20,359,279.62</b>
<b><u>PAYABLE</u></b>		
Rent Payable	-	5,693.20
Abetment - Payable A/C	9,100.00	-
Retention Payable A/C	1,485,797.22	826,283.92
Lease Rental Payable A/C Kumarawatta, Narampola	5,693.20	-
Payable	<b>1,500,590.42</b>	<b>831,977.12</b>

**SCHEDULE 09 -KURUWITA - PAYABLES**

<b>Description</b>	<b><u>2018</u> <u>Rs.</u></b>	<b><u>2017</u> <u>Rs.</u></b>
Check Role Wagers - Kuruwita	1,274,390.00	1,063,550.00
CEB		17,629.82
Sri Lanka Telecom Ltd	4,600.07	7,541.47
EPF Payable	338,429.47	332,575.88
ETF Payable	46,149.51	45,351.26
Holiday Pay	693,890.00	727,290.00
Attendance Bonus	50,933.33	54,166.67
Festival Advance	6,600.00	
Dartonfield Group	70,973.80	
Death Donation Welfare		10,000.00
Deposits		59,662.00
Kuruwita Substation	312,500.00	
Ceylon Electricity Board	28,450.64	
L.K.S.Rubber Stores	9,000.00	1,400.00
Palawela Rubber Stores	7,125.00	10,350.00
Prasad Hardware	5,570.00	3,263.00
Kuruwita M.P.C.S	54,748.00	26,805.00
S.L.N.S.S		30,480.00
Agroserve		
Vishwa Shakthi Welfare	28,350.00	43,300.00
Accrued expenditure	14,786.70	14,498.40
Un paid coins A/C	51,119.42	48,023.41
Profit Bonus		
Bank Loan		
Sundry Creditors	27,530.50	13,646.95
Palanda Hardware	24,715.00	16,275.00
Motor Cycle Loan - staff		
Personal Bank Loan	137,300.00	114,050.00
Nidahas Sewaka Sangamaya	9,360.00	-
Suspence A/C- DF	204,151.04	
<b>Total</b>	<b>3,400,672.48</b>	<b>2,639,858.86</b>

**DARTONFIELD ESTATE  
SCHEDULE 10 - PAYABLES**

Description	Rs. 2018	Rs. 2017
Attendance Bonus	132,450.00	135,050.00
Agalawatta Auto Service - DF	5,650.00	
C.P.M.S.U.	7,400.00	16,600.00
C.S.C.& W.U.	570.00	570.00
Chanlo Hardware	11,125.00	16,330.00
Check Roll		4,202,370.74
Check Roll Debts - Df	4,928,200.00	
Chemane Ltd		88,436.52
Commission on Cash Transport	20,982.80	155,172.05
Co-Operative Society		-
Deposit Account DF		-
E.P.F.	886,542.80	994,468.41
E.T.F.	148,731.11	135,609.31
Factory Chemical Balance		-
Festival Advance -		
L.J.E.W.U.	16,864.00	
Holiday Pay	1,531,133.25	1,449,914.93
Janatha Fertilizer Enterprises	298,577.50	298,577.50
JD& sons Pvt Ltd		1,489,290.52
Kandy Plastic Industries		8,235.00
Kovil Fund - Dartonfield	44,000.00	6,500.00
Kovil Fund - Galewatta	50,200.00	7,800.00
Kuruwita Sub Station - CO / A		
N I P M		-
National Housing Development Authority		8,958.00
National Savings Bank	16,550.00	4,350.00
New Mahinda Stores		
New Paper Agent	2,280.00	1,080.00
Transport Agent		-
NUW	2,100.00	14,100.00
Payment In Advance - Df		-
PND Construction Pvt Ltd	8,050.00	8,050.00
Poly pac secco Ltd.	688,781.28	705,416.28
Postage DF		
Profit Bonus		104,639.56
Project No. 03.63 H - Model Estate		1,637,872.58
Welfare Society -NK	52,850.00	
Pry Mouth Rubber Industries		-
Unpaid Wages	218,149.38	
Receipts in advance workers		15,400.48
Receivable A/C		-
Refundable Deposits	42,796.00	42,796.00
RRI Canteen	4,550.00	4,045.00
S.L.N.S.S.		7,200.00
Samaranayaka & Samaranayaka	9,555.00	14,100.00
Special Salary Advance - DF		-
Sri Lanka Nidahas Sewaka San DF	1,920.00	-
State Mortgage Bank	80,290.00	80,290.00
Sundry Creditors	170,711.00	48,897.90
Udaya Printers	660.00	660.00
Unpaid coins	3,439.53	3,324.87
Vishwashakthi Welfere	43,750.00	26,700.00
Vogan Estate		
Welfare Society - H.O	83,000.00	13,000.00
Welfare Society - N' Kele		3,150.00
Wijegunawardana & Sons	40,665.00	57,195.00
Polgahawela Substation	278,755.22	
	<b>9,831,278.87</b>	<b>11,806,150.65</b>

**Schedule 11****Accrued Expenses**

<b>Description</b>	<b>Rs. 2018</b>	<b>Rs. 2017</b>
Accrued Expenses	10,290.00	3,913,180.70
Overtime 2018 December	1,117,961.88	572,990.45
Travelling & Subsistence 2018 Dec	914,261.34	562,239.63
Suppliers Payable A/C	10,912,023.72	20,565,039.98
Contract Payable A/C	7,836,127.71	14,433,676.90
Other Paybles	786,463.20	
	<b>21,577,127.85</b>	<b>40,047,127.66</b>

**Dartonfield Estate (09-iii)**

<b>Description</b>	<b>Rs. 2018</b>	<b>Rs. 2017</b>
Overtime, Travel. & Subsist. - Dec'2018		214,021.60
Labor Charges - December 2018		
Meals supply to Tappers		
Re-imbusement of Medical expenses to Staff	-	<b>214,021.60</b>
<b>Grand Total</b>	<b>21,577,127.85</b>	<b>40,261,149.26</b>

**(Inter Transaction Accounts - Current A/C)**

	<b>RRI</b>	<b>K/W</b>	<b>D/F</b>
Dartonfield	(5,275,730.53)	-	5,275,730.53
Kuruwita	(3,869,276.60)	3,869,276.60	-
<b>RRI</b>	<b>(9,145,007.13)</b>	<b>3,869,276.60</b>	<b>5,275,730.53</b>



## Schedule 12

## OTHER CAPITAL GRANTS

## Other Capital Grants

Accumulated Fund	Value as at 01.01.2018 Rs.	Additions During Year Rs.	Amortization on Grants Rs.	Value as at 31.12.2018 Rs.
O.D.A. Grant	5,606.79			5,606.79
Government Grant	1,556,097.28			1,556,097.28
Australian Grant	165,221.00			165,221.00
World Bank Grant	4,739,779.82			4,739,779.82
UNDP Grant	2,571,866.95			2,571,866.95
UNICEF Grant	10,000.00			10,000.00
CRI /TRI Grant	334,058.64			334,058.64
NARESA Grant	1,345,912.39			1,345,912.39
UNDP Research Grant	2,510,441.46			2,510,441.46
Tea Board Grant	445,343.40			445,343.40
SRRP I Grant	12,624.52			12,624.52
ARP Project	4,578,055.64			4,578,055.64
CARP Grant	54,738.94			54,738.94
Treasury Grant (Motor Vehicles)	15,375,000.00	-		15,375,000.00
Medicinal Plant Project Grant	15,624.46			15,624.46
NERESA Grant	5,600.00			5,600.00
SRRP II - Grant	7,644,391.73			7,644,391.73
Treasury Grant (Capital)	8,893,721.84			8,893,721.84
N.S.F. Grant	1,487,616.70			1,487,616.70
D.F.I.D. Grant	49,151.93			49,151.93
Staff Grant Comfort room	10,272.93			10,272.93
European Union Grant	9,693.90			9,693.90
Centre for Poverty	2,221.03			2,221.03
Environment Project Phase II	3,489.70			3,489.70
Climate Change Project	3,445.16			3,445.16
3rd Symposium Grant	24,621.87			24,621.87
A.F.National Research Council	329,781.12			329,781.12
Divineguma	545,240.32			545,240.32
International Foundation for Science	73,536.00			73,536.00
Agricultural Research	12,542,595.30			12,542,595.30
White root Disease	-	-		-
Special Project Other Grant	8,958,000.00			8,958,000.00
NSF and Other Grants (Total) - Note 38A	6,908,148.18	-		5,103,408.81
Special Capital Project - MPI- Note 38B	97,552,943.18			140,497,658.36
	<b>178,764,842.18</b>		<b>-</b>	<b>219,904,817.99</b>

***Labour rates and break down of cost of production from 2014 to 2018 (Rs/Kg) in Dartonfield estate***

	<b>2014</b>	<b>2015</b>	<b>2016</b>	<b>2017</b>	<b>2018</b>
1. Labour wages	687.50	687.50	687.50 up to Sept.805 from Oct.	805	805.00
2. Cost of production	245.06	270.57	241.13	280.55	268.43
2.1 Tapping	118.61	113.94	116.46	122.77	115.63
2.2 Manufacture	35.82	36.43	32.35	34.47	33.08
2.3 General charges	74.49	103.07	74.43	97.29	98.10
2.4 M/area upkeep	16.14	17.13	17.89	26.02	21.62
3. N.S.A.	256.56	255.26	234.84	319.00	255.44
4. Profit per kg	11.50	(15.31)	(6.29)	(38.45)	(12.99)

***Labour rates and the break down of the cost of production from 2014 to 2018 (Rs/kg) in Kuruwita estate***

	<b>2014</b>	<b>2015</b>	<b>2016</b>	<b>2017</b>	<b>2018</b>
Labour rate	687.50	687.50	Jan. - Nov. 687.50 From December 805.00	805.00	805.00
Cost of production	198.00	191.21	179.27	250.01	279.36
Tapping cost	96.70	87.77	89.65	99.08	108.80
Manufacturing	-	22.14	21.49	32.65	36.33
General chargers	79.58	64.72	54.48	92.38	97.16
Field & cultivation cost	21.72	16.58	13.65	25.90	37.07
N.S.A	251.92	207.86	217.11	294.18	244.89
Profit per kg.	53.92	16.65	37.84	44.17	(34.47)

PLA/C/RRB/01/18/05 31 May 2019

Chairman  
Rubber Research Board of Sri Lanka

**Report of the Auditor General on the Financial Statements and Other Legal and Regulatory Requirements of the Rubber Research Board of Sri Lanka for the Year Ended 31 December 2018 in Terms of Section 12 of the National Audit Act, No. 19 of 2018**

-----

**1. Financial Statements**

**1.1 Qualified Opinion**

The audit of the financial statements of the Rubber Research Board of Sri Lanka for the year ended 31 December 2018 comprising the statement of financial position as at 31 December 2018 and the statement of financial performance, statement of changes in equity and cash flow statement for the year then ended, and notes to the financial statements, including a summary of significant accounting policies, was carried out under my direction in pursuance of provisions in Article 154 (1) of the Constitution of the Democratic Socialist Republic of Sri Lanka read in conjunction with provisions of the National Audit Act No. 19 of 2018 and Finance Act No. 38 of 1971. My report to Parliament in pursuance of provisions in Article 154 (6) of the Constitution will be tabled in due course.

In my opinion, except for the effects of the matters described in the basis for Qualified Opinion section of my report, the accompanying financial statements give a true and fair view of the financial position of the Board as at 31 December 2018, and of its financial performance and its cash flows for the year then ended in accordance with Sri Lanka Public Sector Accounting Standards.

**1.2 Basis for Qualified Opinion**

- (a) A sum of Rs.895,206 utilized for the purchase of fixed assets in the year under review in contrary to the Directives of the Public Sector

Accounting Standards had been understated in investment activities of the statement of cash flow and total grants received for capital expenditure from General Treasury, Ministry and from another institute had been adjusted by an excess of Rs. 52,389,853 to cash flow generated from financial activities.

- (b) In terms of the Sri Lanka Public Sector Accounting Standards No. 07, the lands of the Board valued at Rs. 4,237,429 had not been revalued and the fair value of the lands had not been included in the financial statements even though the fair value of the lands had a greater value than their market value.
- (c) In accordance with Section 15 of the Sri Lanka Public Sector Accounting Standard No. 09, the stock should be valued at the lower of cost and net realized value. Nevertheless, the stores stock costing Rs. 17,991,255 had been valued at the general cost and stated in the financial statements without computing its net realized value.
- (d) Action had not been taken to identify assets indicated by capital grants totaling Rs.219,904,818 received from the General Treasury and from the other institutions for various projects from previous years and to function in relation to those assets in terms of the Accounting Policy of the Board and to state them in the financial statements.
- (e) Even though balances of debtors and creditors as at 31 December in the year under review amounting to Rs. 27,831,898 and Rs. 21,714,480 respectively had been stated in the financial statements, balance confirmation letters and age analysis related to the verification of balances receivable and payable had not been presented to the Audit.

I conducted my audit in accordance with Sri Lanka Auditing Standards (SLAuSs). My responsibilities, under those standards are further described in the Auditor's Responsibilities for the Audit of the Financial Statements section of my report. I believe that the audit evidence I have obtained is sufficient and appropriate to provide a basis for my qualified opinion.

### **1.3 Responsibilities of Management and Those Charged with Governance for the Financial Statements**

Management is responsible for the preparation of financial statements that give a true and fair view in accordance with Sri Lanka Public Sector Accounting Standards, and for such internal control as management determine is necessary to enable the preparation of financial statements that are free from material misstatement, whether due to fraud or error.

In preparing the financial statements, management is responsible for assessing the Board's ability to continue as a going concern, disclosing, as applicable, matters related to going concern and using the going concern basis of accounting unless management either intends to liquidate the Board or to cease operations, or has no realistic alternative but to do so.

Those charged with governance are responsible for overseeing the Board's financial reporting process.

As per Section 16 (1) of the National Audit Act No. 19 of 2018, the Board is required to maintain proper books and records of all its income, expenditure, assets and liabilities, to enable annual and periodic financial statements to be prepared of the Board.

### **1.4 Auditor's Responsibilities for the Audit of the Financial Statements**

My objective is to obtain reasonable assurance about whether the financial statements as a whole are free from material misstatement, whether due to fraud or error, and to issue an auditor's report that includes my opinion. Reasonable assurance is a high level of assurance, but is not a guarantee that an audit conducted in accordance with Sri Lanka Auditing Standards will always detect a material misstatement when it exists. Misstatements can arise from fraud or error and are considered material if, individually or in the aggregate, they could reasonably be expected to influence the economic decisions of users taken on the basis of these financial statements.

As part of an audit in accordance with Sri Lanka Auditing Standards, I exercise professional judgment and maintain professional scepticism throughout the audit. I also:

- Identify and assess the risks of material misstatement of the financial statements, whether due to fraud or error, design and perform audit procedures responsive to those risks, and obtain audit evidence that is sufficient and appropriate to provide a basis for my opinion. The risk of not detecting a material misstatement resulting from fraud is higher than for one resulting from error, as fraud may involve collusion, forgery, intentional omissions, misrepresentations, or the override of internal control.
- Obtain an understanding of internal control relevant to the audit in order to design audit procedures that are appropriate in the circumstances, but not for the purpose of expressing an opinion on the effectiveness of the Company's internal control.
- Evaluate the appropriateness of accounting policies used and the reasonableness of accounting estimates and related disclosures made by the management.
- Conclude on the appropriateness of the management's use of the going concern basis of accounting and based on the audit evidence obtained, whether a material uncertainty exists related to events or conditions that may cast significant doubt on the Board's ability to continue as a going concern. If I conclude that a material uncertainty exists, I am required to draw attention in my auditor's report to the related disclosures in the financial statements or, if such disclosures are inadequate, to modify my opinion. My conclusions are based on the audit evidence obtained up to the date of my auditor's report. However, future events or conditions may cause the Board to cease to continue as a going concern.
- Evaluate the overall presentation, structure and content of the financial statements, including the disclosures, and whether the financial statements represent the underlying transactions and events in a manner that achieves fair presentation.

I communicate with those charged with governance regarding, among other matters, significant audit findings, including any significant deficiencies in internal control that I identify during my audit.

## **2. Report on other Legal and Regulatory Requirements**

National Audit Act, No. 19 of 2018 include specific provisions for following requirements.

- Except for the effect of the matters described in the Basis for Qualified Opinion paragraph, I have obtained all the information and explanation that required for the audit and as far as appears from my examination, proper accounting records have been kept by the Board as per the requirement of Section 12 (a) of the National Audit Act, No. 19 of 2018.
- The financial statements presented is consistent with the preceding year as per the requirement of Section 6 (1) (d) (III) of the National Audit Act, No. 19 of 2018.
- The financial statements presented includes all the recommendations made by me in the previous year as per the requirement of Section 6 (1) (d) (iv) of the National Audit Act, No. 19 of 2018.

Based on the procedures performed and evidence obtained were limited to matters that are material, nothing has come to my attention;

- to state that any member of the governing body of the Board has any direct or indirect interest in any contract entered into by the Board which are out of the normal cause of business as per the requirement of Section 12 (d) of the National Audit Act, No. 19 of 2018.
- to state that the Board has not complied with any applicable written law, general and special directions issued by the governing body of the Board as per the requirement of section 12 (f) of the National Audit Act, No. 19 of 2018 except for.

Reference to Law/ Direction -----	Description -----
(a) Section 4:7 of the Chapter XV of the Establishments Code of the Democratic Socialist Republic of Sri Lanka.	A total of balances amounting to Rs. 3,509,706 to be recovered to the Board during the period of 02 years to 27 years from 04 officers who had gone abroad by obtaining paid leave for studies and had breached conditions of bond, had not yet been recovered.
(b) Financial Regulations of the Democratic Socialist Republic of Sri Lanka (FR) (i) FR 104	Even though a period of 06 months to 22 months had lapsed after the occurrence of vehicle accidents in 06 occasions from the previous year, Boards of Inquiry had not been appointed and the parties responsible and the loss had not been determined.
(ii) FR 757 (2)	The copies of the reports of the Annual Verification of Goods conducted as at 31 December in the year under review had not been presented to the Auditor General.
(c) Assets Management Circular of the Secretary of the General Treasury bearing No. 01/2018 of 19 March 2018.	Even though 02 years to 04 years had lapsed after removing 05 vehicles that were 28 years to 37 years old from the use, action had not been taken to dispose of such vehicles.



- to state that the Board has not performed according to its powers, functions and duties as per the requirement of section 12 (g) of the National Audit Act, No. 19 of 2018.
- to state that the resources of the Board had not been procured and utilized economically, efficiently and effectively within the time frames and in compliance with the applicable laws as per the requirement of section 12 (h) of the National Audit Act, No. 19 of 2018 except for.
  - (a) Even though an amount of Rs.15,701,989 had been paid to a public institution on 29 December 2017 for purchasing an electric generator, the generator had not been provided even by the date of the audit report.
  - (b) In accordance with the Paragraph 02 of the Treasury Operations Circular No. 1/2008 of 03 March 2008, a systematic investment methodology, which brings more favourable outcome to the National Economy, should be adopted in relation to the operation of the institutions that provide funds directly by the Government. Nevertheless, a balance in the range of Rs.37 million in a Current Account and Rs.106 and a balance in the range of Rs.02 million and Rs.36 million in another current account were remained idle in the current bank accounts for a period more than one year.

### **3. Other Audit Observations**

- (a) Even though buildings had been constructed in lands such as Narampola (Alawwa) and Kumarawatte (Monaragala) belong to Janatha Estate Development Board by incurring an amount of Rs.16,199,917, the lands had not been legally transferred to the Board.

- (b) The four items of equipment such as Moving Die Rheometer bearing HTM 2000, Aging oven, Vacuum oven bearing No. K 489 and Rubber Process Analyzer which were bought in the years 2010 - 2017 at a total of Rs. 15,743,829 remained idle for a period of 2 years to 08 years as those instruments had not been utilized after repairing them.
- (c) Even though it had been decided to preserve the two machines such as Two Roll Mill Cal/006 and Hydraulic Press Cal/010 remained idle for more than 15 years, as antiquities, they were kept outside insecurely even without a cover.
- (d) Due to the payment of an amount of Rs.4,644,480 to the contractor in lieu of the amount of Rs.4,142,660 payable for the renovation activities of the administration building, an amount of Rs.501,820 had been overpaid.

W.P.C. Wickramaratne  
Auditor General