



ශ්‍රී ලංකා රබර් පර්යේෂණායතනය

**RUBBER RESEARCH INSTITUTE  
OF SRI LANKA**



**2020**

**වාර්ෂික වාර්තාව**  
**Annual Report**

# **Rubber Research Institute of Sri Lanka**

## **Dartonfield, Agalawatta**

### **Vision**

*The Institute's vision is to emerge as the centre of excellence in providing high quality scientific technologies to the rubber industry.*

### **Mission**

*The Institute's mission is to revitalize the rubber sector by developing economically and environmentally sustainable innovations and transferring the latest technologies to the stakeholders through training and advisory services.*

### **Objectives**

- *Increase productivity of rubber to international standards*
- *Increase national production of Natural Rubber (NR) to meet the increasing demand*
- *Optimal and sustainable utilization of land, labour and other resources*
- *Maximize domestic value addition to natural rubber*
- *Improve the organizational effectiveness by encouraging individual competency and self development of RRISL personnel*

### **Policies**

- *Continuation of the research activities on all aspects of rubber production and processing*
- *Continue to promote environmentally friendly and sustainable rubber industry*
- *Transfer the developed technologies through training and advisory services*

## About us

*The origin of rubber research in Sri Lanka goes back to 1909, when a group of planters in the Kalutara district got the service of a chemist to study the coagulation of rubber. This was later expanded to form a Rubber Research Scheme in 1913 and then named as the Rubber Research Institute of Ceylon (now Sri Lanka) in 1951 giving the status that the Rubber Research Institute of Sri Lanka (RRISL) is the oldest Research Institute on rubber in the world. It has a proud record of service to the industry, in plant breeding, agro-management practices and the chemistry of raw rubber.*

*RRISL is the nodal agency in Sri Lanka charged with the statutory responsibility for research and development on all aspects of rubber cultivation and processing for the benefit of the rubber industry. The institute specializes in rubber research, both in the biology of the crop and the chemistry of the natural rubber and the technology of the product. Further, the institute is committed towards technology transfer activities and training of extension personnel and the other stakeholders. Accordingly, it has five biological research departments i.e. Plant Science, Genetics & Plant Breeding, Plant Pathology & Microbiology, Soils & Plant Nutrition and Biochemistry & Plant Physiology and four chemistry departments i.e. Raw Rubber Processing Development & Chemical Engineering, Raw Rubber & Chemical Analysis, Polymer Chemistry and Raw Rubber Technology & Development and the Advisory Services Department for technology transfer together with units for Adaptive Research, Biometry, Agricultural Economics, Audio Visual & Information Technology and Library.*



**RUBBER RESEARCH BOARD OF SRI LANKA**  
**ANNUAL REPORT 2019**

**Contents**

Director's Report	1
Organizational Structure	5
Major Achievements	6
Activities of Research Departments	8
Board of Management, Committees and the Staff	18
Financial Statements	35

Cover : Fungicide application to control the New Leaf Fall Disease



## **Director's Report**

### **Rubber Research Institute of Sri Lanka**

---

This review comprises an overview of the local and international scenario of the rubber industry and then the major directions of research and development (R&D) activities in the institute to address the current issues in the industry. Details of research in each division are given in separate sections. Key obstacles for R&D are also mentioned briefly. Further, improvements made in the administrative and financial functions of the institute are given.

#### **Rubber industry of Sri Lanka**

##### ***Rubber production and consumption***

The rubber industry in the country was severely affected by the lockdown situation of COVID during the months of March to June. Average monthly production of rubber came down to 6,141 tonnes with 1.3% month on the decrease. This decline was 12% compared to the values (3400 tonnes) recorded for the corresponding period in 2019. The production of most of the rubber product industries got halted or interrupted during this period. However with special permission given to the rubber estates and product manufactures to work amidst the lockdown situation and some level of increase in demand for rubber products, the situation improved. With that, the natural rubber (NR) production of the country in the year 2020 was recorded as 78,204 tonnes showing by about 4.6% increase from the previous year value. Total NR consumption in the country has been maintained at 111,000 tonnes (just 1.7% decline against the previous year) despite the slowdown in world economy with negative growth rate.

##### ***Rubber extent***

The total extent of rubber lands in the country at the end of 2020 has been recorded as 138.3 thousand hectares with about 75-80% under tapping. Accordingly, there has been a slight increase in rubber extent from the previous year.

##### ***NR exports and imports***

Sri Lanka has exported around 15,766 tonnes of natural raw rubber in the year 2020, particularly in form of crepe (44%) and Sheet (27%) rubber indicating a 21% increase from the values of 2019 based on total raw rubber export quantity. Moderate recovery of raw rubber prices at the international market and reduction in raw rubber local consumption would have attributed to this improvement.

##### ***Rubber manufacturing sector***

Earnings through raw rubber exports were Rs.5.6 billion in the year 2020 against Rs.4.3 billion in the year 2019. Export earnings from finished products were recorded

as Rs. 145 billion in 2020, showing a reduction of about 5.8% against the previous year. Export earnings from semi-processed rubber have been reported as Rs.0.53 billion in the year 2020, while it was Rs.0.7 billion in the year 2019. Accordingly, total export earnings from the rubber industry remained at Rs.151 billion (US\$ 816 million) showing a 5.6% reduction from the previous year.

### **Global rubber industry review**

#### ***Natural rubber supply***

Total world NR production decreased to 12,782 thousand tonnes in 2020 from 13,841 thousand tonnes recorded for the year 2019 (7.6% decrease) according to ANRPC statistics. This was mainly due to the Covid-19 impacts in the major markets in the Asia Pacific region during the mid of the year.

#### ***NR average yield:***

Yield per hectare has declined in ANRPC member countries including Sri Lanka except for Cambodia in 2020. The expansion in mature area reflects the large scale planting undertaken during the period from the year 2005 to 2012. The average yield of Sri Lanka has been estimated as 642 kg/ha/year in the year 2020 while it was 658 kg/ha/year in the year 2019.

#### ***Global NR demand:***

Total NR demand was estimated as 12,827 thousand tonnes in 2020 showing a 6.3% decline from the previous year with a reduction of the supply-demand gap.

#### ***World NR price movement***

Despite of the declining trend prevailed in most of the key markets starting from the year 2011 to 2018, prices experienced a slight increase for the period of 2019 to 2020. Global rubber prices was slightly higher throughout the year 2020 except for the first quarter. In Sri Lanka, annual average RSS3 price in 2020 was US\$ 1.86 per kg which was remained at the same value in the year 2019. The average price of RSS3 was recorded as US\$ 1.74 in Bangkok against the previous year average value of US\$ 1.66. Average Indian RSS4 has decreased to US\$1.82 from US\$ 1.89 per kg against the previous year. According to the predictions of ANRPC countries, global natural rubber prices are likely to improve due to the global economic recovery and higher demand from the major consumers in the world.

#### ***Research and development focus***

Amidst COVID pandemic, a new leaf disease named as 'Pestalotiopsis' began spreading in the rubber lands in wet regions of the country; hence emphasis was given to develop the control measures and to apply them in the field with the assistance of Rubber Development Department, Thurusaviya and Regional Plantation Companies. Also, rubber growers were assisted with the control of White Root Disease.

Unsatisfactory level of rubber price, high cost of production, lack of skilled workers for rubber cultivation, low productivity in rubber lands and associated decline in rubber production in the country were the other focuses of the research and development (R&D) activities. In view of increasing the land productivity with regular tapping, application of low frequency harvesting systems which reduce the cost of production whilst increasing the harvesters' income and tree lifespan, was promoted along with other good agricultural practices. Ethephon formulations were developed locally for this purpose. Research on new planting techniques for better field establishment, slow release fertilizer for increase in fertilizer use efficiency, convenient weed management system and new high value intercrops for rubber to increase the overall income of rubber lands continued. Further, focus on clone development was multifaceted in the directions of high yielding, disease tolerance, timber production and drought resistance. In view of increasing the land extent under rubber, attention was given to expand the rubber cultivation in nontraditional areas. Also, the institute focused on developing a carbon trading project for voluntary carbon market with rubber cultivated in Ampara and Monaragala districts. In addition, developing new avenues for value addition and processing raw rubber in healthy and environmental friendly manner were in high priority. Research on developing new rubber compounds for product manufacturing industries, new approach for manufacturing low protein centrifuged latex, natural based additives in rubber product manufacture and use of safer chemicals in raw rubber manufacture continued. Technology transfer programmes were mainly conducted in more strategic manner.

Whilst continuing with activities in the Finite Element Analyses & Simulation Centre managed as a private public partnership, purchase of key instruments to establish a tyre testing facility at the institute was attended.

#### ***Obstacles for research***

Despite adequate funds allocated to the institute, the issue of not having a sufficient number of qualified senior scientists continued. Unattractive remuneration packages in operation for such high caliber positions has resulted in leaving those to the greener pastures, particular to local universities. A proposal to build up a university by combining all plantation crop research institutes is in negotiation. This requires immediate attention of policy makers as the country expects faster rate of development in the rubber industry.

#### ***Administrative and financial functions***

Although the progress of R&D activities was affected during the lockdown period, the general performance in physical and financial aspects was at satisfactory level by end of the year. Training programmes provided to employees were limited to 15



within the country. No events were recorded on foreign travel but there were several local and international programmes were attended in digital platform.

***Appreciations***

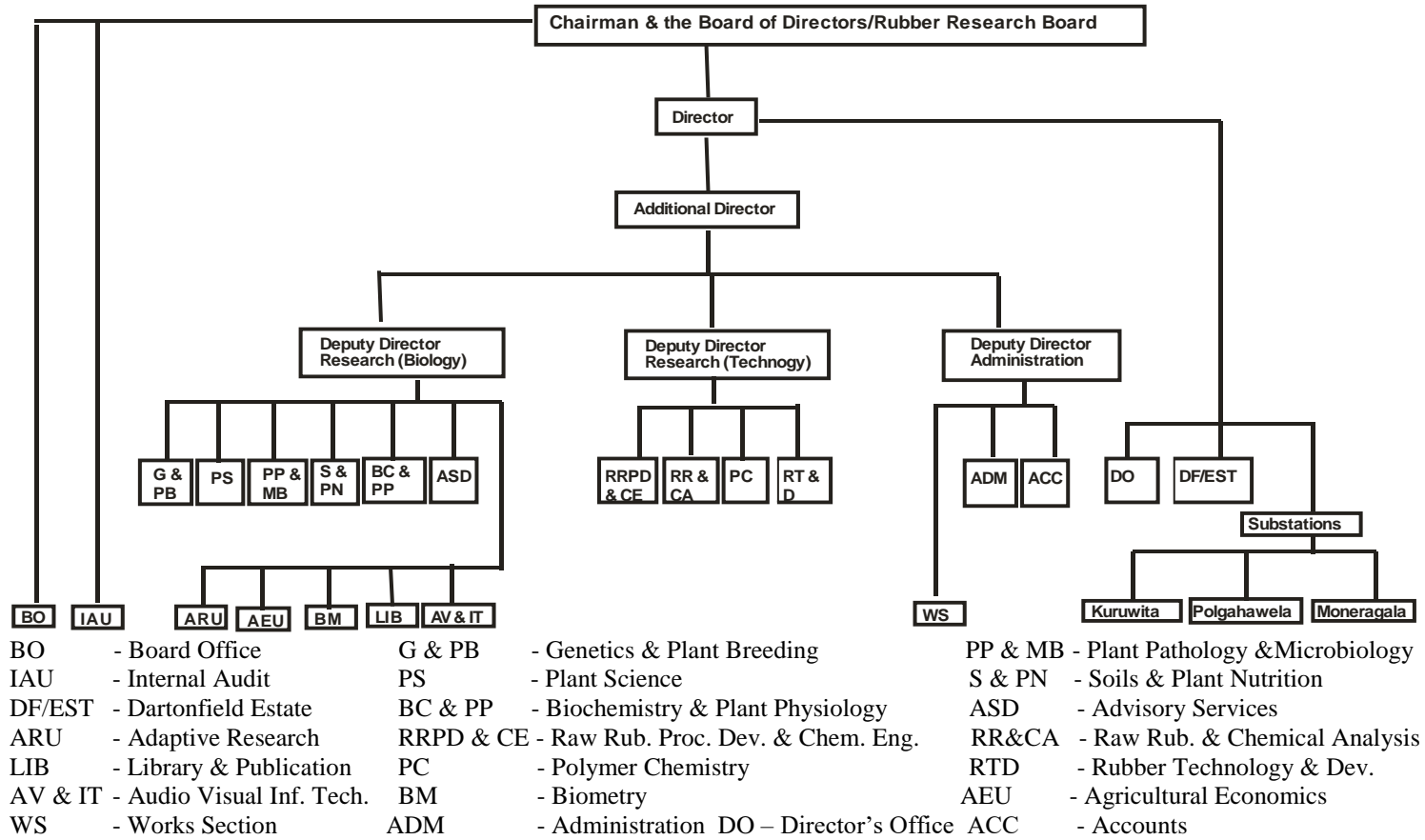
In effective conduct in R&D, the guidance and directions together with financial support and patronages given by the Rubber Research Board and the Ministry are appreciated. Other stakeholder support received in conducting R&D activities is well respected. The contributions made by Deputy Directors, all Heads of scientific and non-scientific divisions and other staff towards the Annual Report are acknowledged.

In particular, special appreciations are given to the Economic Unit for providing required data for this review and to the staff in the Library and Publication Unit for compiling the materials and finally building up the Annual Report 2020.



Dr. V.H.L. Rodrigo  
Additional Director

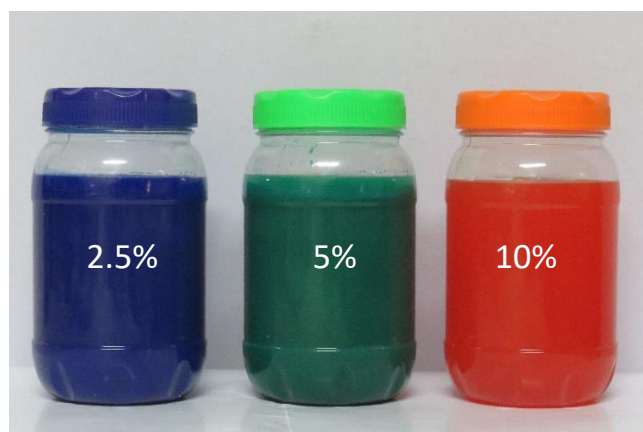
## ORGANIZATIONAL STRUCTURE



## Major Achievements during 2020

---

- Two new commercial ethephon formulations i.e. water based and oil based were developed locally.



- Use of the **Reusable Slow Release Fertilizer Porous Tube (RSPT)** has resulted in significantly higher in plant girth (20%), soil exchangeable Mg, leaf nitrogen and magnesium over the conventional fertilizer application.
- Shoes were produced for the export market in collaboration with a medium scale manufacturer by partial replacement of virgin rubber in out-sole compounds with patented novel reclaimed rubber developed using an environmental friendly reclaiming agent with the aim of reducing the cost of shoes.
- NR based composites with synthesized micro and nano fibres of coir were developed with the aim of replacing carcinogenic carbon black and enhancement of properties.
- Initial development of NR latex based fashionable gloves to protect against the Covid-19 pandemic (Figure 1).



Figure 1: NR latex based fashionable gloves

- NR latex compound as a water-proof coating material for tents made out of fabric was developed on a request made by a client as a need during Covid-19 pandemic.
- NR based composites with durian husk fibres as a partial replacement for carbon black, which has been identified as a carcinogenic ingredient were developed and shoe soles were produced in collaboration with the Textile Department, Open University of Sri Lanka (Figure 2).



Figure 2: NR based shoe soles produced with durian husk fibres

## Activities of Research Departments - 2020

---

### Agronomy departments/Sections/Units

#### GENETICS AND PLANT BREEDING DEPARTMENT

Annual hand pollination programme was carried out at Neuchatel Estate and was produced 57 new genotypes. Data collection in 2009 ECT at Eladuwa estate was continued with an objective of developing precise yield indexes. Twenty genotypes from 2013 HP progeny were selected for small scale clonal evaluation. Five genotypes were characterized to add into the clone recommendation under “interim recommendation”. Genotypes were characterized under latex –timber and timber-Latex categories from 2000 HP progeny evaluated at Delkith Estate. The possibility of use of *REF* gene expression for precise early selection was evident.

#### PLANT SCIENCE DEPARTMENT

Growth and physiological data were recorded in nursery experiments on effects of seed quantity, immergence time and rows on the growth and budgrafting performances of *Hevea* in Moneragala. About 1600 plants were transplanted in 7” x 18” poly bags. Growth and physiological data were recorded in super plant experiment at Kekirawa. A new experimental trial was established at Kumarawatta Estate, Moneragala to see the effect of holing, using a digger machine, on growth of rubber.

Latex and tea yield were recorded for Tea X Rubber intercropping trials and hard pruning was done for rambutan trees in Rubber X Perennial crops trial at Kuruwita. New experimental trials on the “effects of different spacing for Rubber X Cardamom and Rubber X Cinnamon” were established at Labugama and Kuruwita respectively. Growth and physiological data were recorded for Rubber X Fruit crops trials at Moneragala and Ampara. *Aquilaria* plants were inoculated with a fungal culture of different concentrations and were harvested after about 10 months of inoculation.

Latex yields and annual growth and bark measurements were recorded in the new tapping experiment at Sirikandura estate. Yield and weather data were recorded for the early morning tapping expedient for a few months. A prototype of a new tapping machine was tested and was found to be impracticable. Antioxidant application, bark measurements and yield recordings were done for TPD experiments.

In total 52 nursery visits were made and about 466,400 plants were certified. Weak plants in RDD nurseries were discarded in collaboration with Rubber Development Department. Budwood nurseries were inspected for Rubber Development Department

Nurseries. 39 advisory visits were made and a total of 30 training programmes (Nursery Management, Budgrafting & Tapping) were conducted.

#### **PLANT PATHOLOGY AND MICROBIOLOGY DEPARTMENT**

Clonal screening programme showed that the incidence of the secondary leaf fall diseases, Powdery mildew and Colletotrichum leaf disease were in moderate levels. In several vulnerable sites, diseases have reached epidemic proportion. Based on the *Corynespora* screening programme, there were no new disease reports from the field plants. Incidence of *Phytophthora* disease was severe during the year. *Corynespora* Leaf Fall Disease severity from the non traditional areas was comparatively higher. The antagonistic plants effective against *Rigidoporus* under *in vitro* conditions, were tested in the field. Studies on the biology of the pathogen population *Phellinus noxius* were completed and a dissertation was submitted for the fulfillment of a PhD programme. Antagonistic fungi were identified from rubber growing soils to control the white root disease biologically. Talc was identified as a less bulky medium for the formulation of a biopesticide and the effectiveness has been proven under laboratory conditions. Two training programmes were conducted to educate the growers on the effective management of white root disease. Eight demonstration plots were established using the recommendations to demonstrate the efficacy of the new technologies. The new leaf fall disease reported during the end 2019, showed further spreading towards all the main rubber growing districts. By the end 2020, approx. 20,000ha were reported to be under the disease. The preliminary experiments on the biology, epidemiology and chemical controlling were initiated. A chemical controlling programme was undertaken collaboratively with the RDD to limit further spread of the disease. A development project proposal was submitted to receive funds in order to do further investigations as this is a new disease condition.

#### **SOILS AND PLANT NUTRITION DEPARTMENT**

Thirteen research activities on improvement of soil fertility, increasing fertilizer use efficiency, soil, water and nutrient conservation, weed control and one capital project on “Modification of fertilizer recommendations system of *Hevea* with reference to plant, soil and field parameters” were implemented and monitored during the year. Project entitled “Enhancing soil fertility in degraded rubber lands by combine use of agro management practices such as inorganic fertilizer, biofertilizer, cover cropping and mulching with organics” which was funded by National Research Council (NRC) was conducted and activities were implemented in six estates.

It was concluded that shade net mulch was superior than polythene mulch highlighting that shade net mulch could effectively control weeds around the plant base in immature rubber fields with *Mucuna* cover crop for 03 years. Reusable Porous Tube (RPT) experiment showed significantly higher girth of immature *Hevea* plants

with RPT type 2 compared to other treatments: RPT type 1 and conventional type of fertilizer application at the end of 14 months period. Further, SRFs type 2 created better soil environment than other treatments: type 1 and control, hence better girth could be observed with SRF type 2. Special variability of major soil nutrients under Pestalotiopsis disease pandemic in rubber was evaluated to identify the correlation between the disease and nutrient stress. Potential annual soil loss in rubber growing areas was estimated employing Revised Universal Soil Loss Equation (RUSLE) at Geographic Information Systems (GIS) and Remote Sensing (RS) platforms. A land suitability model was developed to derive area specific preliminary land suitability status using soil, climate and topography data at GIS platform for Embilipitiya and Kolonne DSDs in Sri Lanka. Different fertilizer mixtures were tested to non traditional rubber growing areas in Moneragala, Mahaoya and Padiyatalawa and better immature plant growth improvement could be observed with R/SA based mixtures; R/SA 7:9:9:3, new fertilizer mixture and potassium double recommended mixture compared to urea based mixture R/U 12:14:14. Experiments related to “Shaka Sara” new liquid organic manure, encapsulated coir bricks and earth warms were disturbed due to Covid- 19 situation in the country and failed to collect data at correct time period. Four different treatments including combine use of agro management (CAM) practices such as cover management, biofertilization and stone, coconut husk and vetiver terracing with reduced amount of inorganic fertilizer application were implemented and maintained at Elston, Parabe, Udabage, Penrith, Halpe and Pussella estates. Soil, plant and field parameters were collected from different soil associations representing 2 estates in Colombo district. Collected plant and soil samples were analyzed for 345 parameters covering an extent of 160ha. Analytical data showed significantly higher value of available soil phosphorus content compared to those values in early studies. Further, it could be observed that there is a possibility of cutting down Eppawala Rock Phosphate (ERP) application as a phosphorus fertilizer for immature and mature plants. Site specific fertilizer recommendation programme provided 17 fertilizer recommendation reports for 2686 ha of mature rubber. Five land suitability reports were issued for 400 ha under land selection programme. Analytical service offered 59 analytical reports including 759 parameters based on 171 fertilizer & soil samples from outside organizations to assure the application of good quality fertilizer for their rubber lands.

#### **BIOCHEMISTRY AND PHYSIOLOGY DEPARTMENT**

Technology transfer programmes on S/2 d4 low intensity harvesting system were conducted for 180 smallholdings and 16 RPC owned estates in districts; Kalutara, Kegalle, Ratnapura, Colombo, Gampaha, Kurunegala, Kandy and Galle. S/2 d4 LIH system was adopted in 200.00 ha of smallholdings and RPC owned estates in above districts.

Research and Development programmes on weekly and d4 based double cut system low intensity harvesting (LIH) systems have been continued for a sustainable rubber industry in Sri Lanka.

Evaluation of physiological, biochemical and growth performance of selected 10 *Hevea* genotypes established in Vauniya, Kandakadu, Hambegamuwa and Padiyathalawa experimental fields were done in order to identify the genotypes which are best suited for different agro- ecological zones.

Biochemical and physiological assessment of rubber latex to identify the best genotypes that produce quality raw rubber during screening process was continued.

Time course variation of yield data, biochemical components in latex and raw rubber properties with different types of ethephon was investigated in order to identify the best ethephon type for yield stimulation of rubber.

Commercial scale testing of locally produced rubber yield stimulant mixtures has been continued for further investigations on effectiveness of stimulant mixtures on yield.

#### **ADVISORY SERVICES DEPARTMENT**

As a solution to tapper shortage, 146 new harvesting assistants were introduced through Tapping Training Schools (TTS) for the smallholder sector. One hundred and seventy two Semi - skilled harvesting assistants were trained to improve the technical quality in tapping. The extension strategy focused on farmer participatory development of selected rubber units in each REO divisions in traditional rubber growing areas was continued and developed 154 rubber lands (71 – immature, 83 – mature) as model rubber holdings. Thirty eight smallholdings were fixed rain guards as demonstrations. Eight smallholdings established with different intercrops as models. Twenty one rubber processing centers were developed as models and construction of 17 new RSS processing centers and rehabilitation of 11 substandard centers were attended. Farmer training programmes were conducted to educate 191 smallholders and 545 estate staff (Field officers and estate workers) on general cultivation and processing aspects of rubber.

GIS based mapping was in progress in relation to all field training and advisory programmes. Establishment of demonstration plots and exhibition areas at Monaragala substation was completed. Group extension programme called “*Vihidum Sathkara*” was effectively conducted providing advisory and extension services for 71 small land units in traditional rubber growing areas for necessary improvements. Two hundred sixteen advisory visits were carried out to solve problems in technology adoption on requests made by smallholders.



Involved as resource personal in:

1. Six programmes of quality improvement of RSS programs, 05 Harvesters training programs organized by Thurusaviya Fund.
2. Two tapper Harvesters training programs organized by Rubber Development Department.
3. Education exhibition organized by Labuduwa Siridhamma College, Galle.

### **BIOMETRY SECTION**

Biometry Section supported the other research departments on statistical applications pertaining to experiments on rubber planting and processing, *viz.* design of experiments, analysis and interpretation of the research findings, were extended to other research departments. In view of providing a better service on the above, development and modifications of statistical methods was mainly focused in the research programme of the Biometry section to suit the needs of the rubber sector. New statistical methods were applied to socio-economic data in the rubber sector to improve interpretability of research. AGROMET station at Dartonfield and Meteorological stations at Kuruwita and Moneragala were maintained and data were recorded and disseminated for research purposes. Rainfall data were collected and recorded from Nivithigalakele, Galewatta and Polgahawela substations in addition to the stations mentioned above.

### **ADAPTIVE RESEARCH UNIT**

Feasibility of cultivating rubber in Anamaduwa Divisional Secretaries divisions of Puttlam district of Wayamba Province was assessed. GPS locations of new rubber smallholdings in Ampara and Moneragala districts were identified in collaboration with Smallholder Tea and Rubber Revitalization Project to estimate fixed carbon units. Awareness programmes were conducted to educate rubber growers in Ampara and Moneragala districts on carbon trading and its benefits. Initial data gathering for Carbon footprint calculation of rubber related government organizations was commenced. On-farm productivity and production variability among rubber smallholders in Kegalle and Kurunegala districts were assessed.

### **AGRICULTURAL ECONOMICS UNIT**

Key activities of the Agricultural Economics Unit were as follows. Calculation of rubber industry growth indicators including the rate of growth and revenue generation. Analysis of poverty indicators of rubber-based agroforestry smallholder farmers. Analysis of Technical Efficiency (TE) of smallholder rubber farmers in Kegalle District Sri Lanka. Building smallholder rubber agroforestry farm typologies in the Moneragala District, Sri Lanka for decision making.

### **LIBRARY AND PUBLICATION UNIT**

The reference section of the Library was updated with twenty six text books increasing the total collection to 6,208 books. Construction of a store room for the library was completed and most bound volumes in the library were stored subsequently.

Several institutional publications, namely 1000 Nos of Advisory Circulars (Sinhala), Annual Review 2018, Annual Report 2018 & 2019 were prepared.

### **AUDIO VISUAL AND INFORMATION TECHNOLOGY UNIT**

Existing High Definition IP Surveillance Camera System (CCTV) at Dartonfield office premises was extended up to 47 Nos. of Cameras. Accordingly, another nine (09) Nos. of CCTV Cameras were installed & configured at desired locations.

Virtual Local Area Network (VLAN) was installed & configured to improve the data speed at Dartonfield office premises.

Necessary steps were taken to provide Network / Internet facility and intercom telephone facility for the renovated area of Biochemistry & Physiology Department.

Necessary steps were taken to provide Network / Internet facility and intercom telephone facility for the renovated area of newly built Administration Unit at Ratmalana Office.

Necessary steps were taken the telecommunication pole installed at Dartonfield office premises to improve the Mobitel 4G signal coverage.

CCTV monitoring facility was provided to the Director's office at Dartonfield. Institutional official web site ([www.rrisl.gov.lk](http://www.rrisl.gov.lk)) was updated.

Administration of Local Area Network (LAN), Virtual Local Area Network (VLAN), Hardware Firewall & Mail Server were done.

Maintenance of Computers & peripherals, Audio visual equipment, Finger Scanners, PABX telephone systems, CCTV Camera System and Surge Protection System were done throughout the year.

Initial steps were taken to get the Dialog 4G & 2G signal coverage improved using Dialog Telecommunication tower installed at Dartonfield office premises.

Preliminary arrangements were made with Sri Lanka Telecom & initial steps were taken to get the internet connection (Data) at Dartonfield office improved via dedicated fiber optic leased line with consistent, uninterrupted & high speed internet. Further preliminary arrangements were made with SLT Mobitel to get the internet

facility improved at Nivithigala Kele substation via Mobitel 4G Wireless Router or fiber optic line.

## **Rubber Technology departments**

### **RUBBER TECHNOLOGY AND DEVELOPMENT DEPARTMENT**

Tested 94 sole crepe samples, 118 rubber compounds and 504 rubber / polythene products on request from the rubber industry.

Eighteen SMEs / rubber small holders and three groups of university students were trained on manufacture of NR based products. The staff of the Rubber Technology and Development department conducted four workshops on manufacture of rubber products, organized by the Rubber Development Department. Also, the staff was actively involved in the "Ridi Abises" exhibition held in Labuduwa, Galle.

### **POLYMER CHEMISTRY DEPARTMENT**

Studies on development of nitrosamine safe binary accelerator systems for sulfur vulcanized natural rubber compounds were continued throughout the year. The binary combinations showed synergistic effects on modulus and strength properties of the natural rubber vulcanizates compared to its individual counterparts.

Further development work on novel method for incorporation of filler *in-situ* in natural rubber in an attempt to prepare value added latex films was carried out. Comparison of mechanical properties between *in-situ* filler incorporated vulcanized natural rubber latex films and *ex-situ* filler incorporated vulcanized films found that novel method exhibits better performance.

In addition several research and development projects were carried out during the years while providing in plant training for undergraduates.

More than thousand samples of polymer materials and compounding ingredients received from industry and academia were characterized using advanced testing equipment namely FTIR (Fourier Transform Infrared Spectrophotometer), TGA (Thermo-Gravimetric Analyzer), DSC(Differential Scanning Calorimeter) and DMA(Dynamical Mechanical Analyzer) available at the department. Industrial solutions were also given based on the characterization results to the clients on their request.

## **RAW RUBBER AND CHEMICAL ANALYSIS DEPARTMENT**

The department is mainly empowered the raw rubber producers, rubber exporters and small and medium scale industrialists by providing an internationally accepted testing facilities. The department offered the testing, analytical and certification services on raw natural rubber and rubber chemicals to all sectors of the rubber industry. These services were also extended to rubber traders, researchers from fellow departments of the institute and various local institutions such as Universities, other research institutes as well as individuals including postgraduate students, consultants and inventors etc.

A total number of thousand four hundred forty four samples of natural rubber latex, dry rubber and rubber processing chemicals were tested for their quality during the year. This included 257 dry rubber samples, 1161 latex samples and 26 rubber processing chemicals. In total, 512 test certificates were issued on requests received from the respective parties for their quality assessment and marketing purposes.

Thirteen new clones were tested for their latex and raw rubber properties. A collaborative research project was conducted with University of Ruhuna on Purification and commercialization of pyrolytic carbon char generated from waste tire pyrolysis plants in Sri Lanka.

The department staff provided two training programmes on raw rubber and natural rubber latex testing for university undergraduates. Three factory visited were made for trouble shooting activities during the year.

## **RAW RUBBER PROCESS DEVELOPMENT & CHEMICAL ENGINEERING**

A novel hybrid technique was investigated for manufacture of low protein natural rubber centrifuged latex- a value added grade of natural rubber latex. Another novel manufacturing process was developed using an enzyme to manufacture deproteinized crepe rubber-a value added grade of natural rubber in dry form. Raw rubber properties, physico-mechanical properties and dynamic properties of the low protein crepe rubber were tested. Both techniques have shown promising results and field trial were expected to continue in 2021.

A study was commenced to introduce a cost effective treatment plant for small holder sector by improving available aerobic and anaerobic coupled system. A research project was conducted to evaluate the potential of multiwall carbon nanotubes as reinforcement filler in developing lightweight natural rubber based closed-cell structures with improved strength. A study carried out on use of creamed latex instead of centrifuged latex was examined. It was found that creamed natural rubber latex also could be used for selected products.

A study was carried out to develop a novel curing method for thin latex films in order to reduce the cost, energy, and time consumption required for latex product manufacturing process. In this method, a dispersion of curing ingredients including sulfur, accelerators and activator with suitable conditions was used to compound with centrifuged latex instead of conventional compounding method.

RubSys- a IT based application software was developed to disseminate information and knowledge among the natural rubber growers and producers.

### **Estates own by RRI and Sub stations**

#### **DARTONFIELD GROUP**

A total crop of 165,971 kg has been harvested during the year achieving 84% of the estimated crop. When comparing with the previous year, crop records an increase of 10%. The crop harvested on wet days due to the rain guards was 41,024 kg which amounts to 25% of total harvested crop.

Average Yield per Hectare (YPH) for the year was 912 kg showing an increase of 67 kg from the previous year.

The average intake per tapper recorded during the year was 8.0 kg from a tapping task of 220 trees. The highest intake per tapper of 12.7 kg was recorded from the 5.17ha mixed clone planted field in year 2010 on S/2 d4 low frequency systems with ethephon stimulation (tapping task of 225 trees).

The total number of normal, late, rain guard & no tapping days recorded during the year were 219,11, 85 & 50 days, respectively.

Total rainfall recorded for the year was 3376.8 mm with 177 wet days showing 1012.9mm less rainfall and 27 wet days than the values recorded in the previous year.

The Cost of Production (COP) and Net Sale Average (NSA) recorded for the year was Rs.300.90 and Rs.333.73 respectively, giving a profit of Rs.32.83 per kg and a total profit of Rs.5.4 Million. Profit per hectare recorded for the year was Rs. 29,943.55.

The average percentage of Pale Crepe grade No. 01 was 82% during the year.

#### **KURUWITA SUB – STATION**

The mature extent of rubber in the Kuruwita Sub Station was 79.36 hectares during the year.

A total crop of 79,457 kg was harvested during the year recording an increase of 7,149 kg on previous year's crop.

The actual yield per hectare (YPH) was 1,001 kg. The average intake tapper (IPT) of the estate was 7.4 kg, as a similar value as recorded in the previous year.

The total number of Normal, Rainguarded, and No tapping days recorded during the year were 241, 96 and 29, respectively.

The annual rain fall recorded during the year was 3,428.3 mm with 215 wet days as against 3,976.8 with 226 wet days during the previous year.

The cost of production (COP) and the net sale Average (NSA) for the year were Rs.292.36 and Rs.311.69 per kg respectively. The profit made for the year was Rs.1.5 million and the profit per hectare recorded for the year was Rs. 19,353.63.

#### **POLGAHAWELA SUB – STATION**

A total crop of 17080kg, has been harvested during this season and it was 82% of the estimated crop. However, there was a 8.9% increase from the value recorded for the previous year.

The YPH for the year was 962kg. This was an increase of 79kg (8.9%) over the last year value.

The average intake per tapper during the year was 8.8kg. The highest intake per tapper of 11.2kg was recorded from the 2008 field with a tapping task of 269 trees of clone RRIC121 tapped on S/2 d3 systems.

The total number of Normal, Late, and No Tapping Days during the year were 301, 0 & 65, respectively.

Total rainfall recorded for the year was 2385.5mm with 118 wet days. Out of the total manufactured RSS, the share of No.01 grade was 86%.

#### **MONERAGALA SUB – STATION**

Maintenance of all experimental sites were done. Some field crops such as long beans, green gram, okra, green chili, cassava, and cowpea were cultivated. Additional income of sixteen thousands rupees (16000/=) was earned by selling the produce to staff, worker, etc. A new rubber field 2.00 ha of was opened for tapping. The total tapping extent was 5 ha and an income of Rs 1,022,830/= rupees received by selling 3687kg of latex. General advice on rubber cultivation were provided to 189 farmers of the area. Development work associated with the establishment of Techno park in the sub station premises continued. Maintenance of 5000 grilicidia plants established around the boundary of the sub station in 2015 was attached.

The auditorium was made available for several training programmes.

## **Board of Management, Committees & Staff Members**

---

### **RUBBER RESEARCH BOARD OF SRI LANKA**

#### **BOARD OF MANAGEMENT**

##### ***Members appointed by the Hon Minister of Plantation Industries***

1. Prof (Mrs) Sudheera M W Ranwala, Chairperson, Rubber Research Board
2. Mr K V D C Wimalasiri, Director (Development), Ministry of Plantations
3. Ms Darshani De Silva, Director, National Planning Department, Ministry of Finance
4. Dr L M K Tillakeratne, Representative of Colombo Rubber Traders Association
5. Mr Anusha Perera, Plantation Consultant, Balangoda Plantations PLC
6. Mr Justin Senevirathne, Director, Lalan Rubbers (Pvt) Ltd
7. Mr Udara Premathilake, Director Plantations (Rubber), Kelani Valley Plantations PLC
8. Dr Kanchana Silva, Director, Thurusaviya Fund
9. Prof Gamini Senanayake, Chairman, Sri Lanka Council for Agricultural Research Policy

##### ***Ex-Officio Members***

1. Mr J M Mangalatissa, Director General, Rubber Development Department
2. Mr S S Poholiyadda, Chairman, Planters' Association of Ceylon (up to 21.08.2020)
3. Mr Bhathiya Bulumulla, Chairman, Planters' Association of Ceylon (w.e.f. 16.10.2020)

##### ***In attendance***

1. Dr V H L Rodrigo, Additional Director, Rubber Research Institute
2. Mr Susantha Dissanayake, Senior Administrative Officer, RRI

#### **STANDING COMMITTEES**

##### ***Estates Committee***

1. Prof (Mrs) Sudheera Ranwala, Chairperson, RRB. (Chairman of the Committee) (from 2020.01.30)
2. Dr V H L Rodrigo, Additional Director, Rubber Research Institute.
3. Dr (Mrs) P Seneviratne, Deputy Director – Research (Biology), Rubber Research Institute.
4. Dr Susantha Siriwardena, Deputy Director – Research (Technology), Rubber Research Institute.

5. Mr Nissanka Seneviratne, Director, Kotalagala Plantations Ltd. (nominated member)
6. Mr Jagath Hettiarachchi, Senior Manager, Paiyagala Estate, (nominated member)
7. Mr Chaminda Jayalath, Manager, Pussealla Estate (nominated member) (from
8. 14.09.2020)
9. Mr P A Lakshman, Senior Manager, Rubber Research Institute.
10. Mr B S S Hewage, Senior Accountant, Rubber Research Institute.
11. Manager – Estate , Rubber Research Institute (for Kuruwita Sub-station)

***Audit and Management Committee***

1. Ms Darshani De Silva, Director, National Planning Department, Ministry of Finance (Chairman of the Committee)
2. Mr K V D C Wimalasiri, Director (Development), Ministry of Plantations
3. Mr J M Mangalatissa, Director General, Rubber Development Department
4. Ms Nilani Jayasiri, Audit Superintendent, Auditor General's Department

***In attendance***

1. Dr V H L Rodrigo, Additional Director, Rubber Research Institute
2. Mr B S S Hewage, Senior Accountant, Rubber Research Institute
3. Ms M S I Senadheera, Internal Auditor, Rubber Research Board
4. Mr Susantha Dissanayake, Senior Administrative Officer

***Scientific Committee***

***Members of RRISL***

1. Prof Sudheera Ranwala, Chairperson, Rubber Research Board
2. Dr V H L Rodrigo, Additional Director, RRI
3. Dr (Mrs) G P W P P Seneviratne, Deputy Director Research (Biology), RRI
4. Dr S Siriwardena, Deputy Director Research (Technology), RRI
5. Dr D M A P Dissanayake, Head, Advisory Services Dept., RRI
6. Dr (Mrs) D G Edirisinghe, Head, Rubber Technology & Development Dept., RRI
7. Dr (Mrs) S P Withanage, Head, Genetics & Plant Breeding Dept., RRI
8. Dr (Mrs) B W Wijesuriya, Principal Research Officer, Biometry Section, RRI
9. Dr N M C Nayanakantha, Head, Plant Science Dept., RRI
10. Dr (Mrs) T H P S Fernando, Head, Plant Pathology & Microbiology Dept., RRI
11. Dr (Mrs) E S Munasinghe, Principal Research Officer, Adaptive Research Unit, RRI
12. Dr (Mrs) K V V S Kudaligama, Principal Research Officer, Biochemistry & Physiology Dept., RRI
13. Dr (Mrs) R P Hettiarachchi, Principal Research Officer, Soils & Plant Nutrition Dept., RRI
14. Dr (Mrs) A P Attanayake, Senior Research Officer, Raw Rubber & Chemical Analysis Dept., RRI



15. Dr K K Liyanage, Senior Research Officer, Genetics & Plant Breeding Dept., RRI
16. Mr T U K Silva, Senior Research Officer, Plant Science Dept., RRI
17. Mrs B M D C Balasooriya, Research Officer, Adaptive Research Unit, RRI
18. Mrs D S A Nakandala, Research Officer, Plant Science Dept., RRI
19. Mrs M K R Silva, Research Officer, Plant Pathology & Microbiology Dept., RRI
20. Mrs P V A Anushka, Research Officer, Genetics & Plant Breeding Dept., RRI
21. Mr W D M Sampath, Research Officer, Rubber Technology & Dept., RRI
22. Mr P K K S Gunaratne, Advisory Officer, Advisory Services Dept., RRI
23. Mr J K S Sankalpa, Research Officer, Agricultural Economics Unit, RRI
24. Mr K Adikari, Research Officer, Raw Rubber & Chemical Analysis Dept., RRI
25. Mrs I H K Samarasinghe, Research Officer, Polymer Chemistry Dept., RRI
26. Mrs T T D Dahanayake, Research Officer, Genetics & Plant Breeding Dept., RRI
27. Mrs H A Ruwani Jayawardane, Research Officer, Soils & Plant Nutrition Dept., RRI
28. Mrs N P Surani Karunaratne, Research Officer, Biochemistry & Physiology Dept., RRI
29. Miss P G N Ishani, Research Officer, Agricultural Economics Unit, RRI
30. Mr Yashoda Somaratne, Research Officer, Polymer Chemistry Dept., RRI
31. Mr Y C Yohan Sudusinghe, Research Officer, Raw Rubber Process Development & Chemical Engineering Dept., RRI
32. Mr P A Lukshaman, Senior Manager (Estate), RRI

Members representing the Industry and other Institutions

1. Mr K V D C Wimalasiri, Director (Development), Ministry of Plantation Industries,
2. Mrs W K Chaturangi, Assistant Director (Development), Ministry of Plantation Industries
3. Mr Deumith Rohana, Director (Development), Rubber Development Department, No.465, Ganahena, Battaramulla
4. Dr K de Silva, Director, Thurusaviya Fund, No 74, Kaduwela Road, Battaramulla
5. Dr P Dharmasena, Director, National Institute of Plantation Management, M D H Jayawardane Mawatha, Athurugiriya
6. Mr Manoj Udugampola CEO, Agalawatte Plantations PLC, FLC Tower, No 19, Dudley Senanayake Mw, Colombo 8
7. Mr A C Bertus, General Manager, Agalawatte Plantations PLC, FLC Tower, No 19, Dudley Senanayake Mw, Colombo 8
8. Mr S Dissanayake, DGM, Agalawatte Plantations PLC, Pambegama Estate, Parakaduwa
9. Mr L H S Chaminda, Superintendent, Agalawatte Plantations PLC, Peenkanda Estate, Nivithigala

10. Mr K M A S Wijeratne, Superintendent, Agalawatte Plantations PLC, Tiriwanaketiya Estate, Mahagama
11. Mr K Fernando, Superintendent, Agalawatte Plantations PLC, Culloden Estate, Neboda
12. Mr D Wekunagoda, Superintendent, Agalawatte Plantations PLC, Doloswella Estate, Nivithigala
13. Mr R A D I Ramanayake, Superintendent, Agalawatte Plantations PLC, Watapotha Estate, Nivithigala
14. Mr D P A Perera, DGM, P.B. 06, Balangoda Plantations PLC, Palmgarden, Ratnapura
15. Mr D K Wijerathne, Superintendent, Balangoda Plantations PLC, Rambukkande Estate, Rathnapura
16. Mr B L L Premathilake, Superintendent, Balangoda Plantations PLC, Mahawala Estate, Rathnapura
17. Mr R A Alahakoon, Superintendent, Balangoda Plantations PLC, Gatura Estate, Kiriella
18. Mr B Bulumulla, CEO, Elpitiya Plantations PLC, Level 09, Aitken Spence Tower 1, Vauxhall Street, Colombo 2
19. Mr A G Geeth Kumara, General Manager, Elpitiya Plantations PLC, Elpitiya Estate, Talgaswala
20. Mr Eranda, Asst. Manager, Elpitiya Plantations PLC, Talgaswella Estate, Talgaswella
21. Mr Chanaka Wimalasena, Asst. Manager, Elpitiya Plantations PLC, Bentota Estate, Elpitiya
22. Mr R B S Douglas, Senior Manager, Elpitiya Plantations PLC, Elpitiya Estate, Elpitiya
23. Mr N M S B Nawaratne, Manager, Elpitiya Plantations PLC, Gulugahakande Estate, Wanduramba
24. Mr U A Karunanayake, Manager, Elpitiya Plantations PLC, Devithurai Estate, Ethkandura
25. Mr Dasun Werasinghe, Senior Asst. Manager, Elpitiya Plantations PLC, Deviturai Estate, Ethkandura
26. MR L M Amarathunga, Superintendent, Elpitiya Plantations PLC, Salawa Estate,
27. Mr S A Eriyagama, CEO, Kegalle Plantations PLC, 310 High Level Rd, Navinna, Maharagama
28. Mr S A A P Jayathilake, Superintendent, Kegalle Plantations PLC, Pallegama Estate, Niyadurupola
29. Mr S D Munasinghe, Superintendent, Kegalle Plantations PLC, Eadella Estate, Polgahawela
30. Mr B M J A Moonamalle, Superintendent, Kegalle Plantations PLC, Atale Estate, Atale

31. Mr H Mawdiwake, Superintendent, Hapugastenna Plantations PLC, Bibile Estate  
Bibile
32. Mr Sanjeewa, Deputy Manager, Horana Plantations PLC, Hilstream Estate,  
Bulathsinhala
33. Mr M Kariyapperuma, Director, Horana Plantations PLC, No 400, Deans Road,  
Colombo 10
34. Mr Gamini N Ratnayake, DGM, Horana Plantations PLC, Neuchatel Estate,  
Neboda
35. Mr N Wijenayake, Manager, Horana Plantations PLC, Halwatura Estate, Ingiriya
36. Mr Sajith Gunawardane, Manager, Horana Plantations PLC, Frocester Estate,  
Govinna
37. Mr N B Seneviratne, Director Low Country, Kotagala Plantations PLC, Regional  
Office, Colombo 01
38. Mr J N Hettiarachchi, Senior Manager, Kotagala Plantations PLC, Paiyagala  
Estate, Dodangoda
39. Mr L A D J Perera, Senior Manager, Kotagala Plantations PLC, Delkith Estate,  
Baduraliya
40. Mr R Tennakoon, Senior Manager, Kotagala Plantations PLC, Padukka Estate,  
Padukka
41. Mr Priyanthe Ratnayake, Manager, Kotagala Plantations PLC, Gikiyanakande  
Estate, Neboda
42. Mr G L T Swarajith, Manager, Kotagala Plantations PLC, Eduraga Estate,  
Ingiriya
43. Mr A M A I Abesinghe, Manager, Arapolakande Estate, Thebuwana
44. Mr U Amarasekara, Deputy Manager, Kotagala Plantations, Vogan Estate,  
Matugama
45. Mr N Wijeratne, Manager, Kotagala Plantations PLC, Hedigalle Estate,  
BADuraliya
46. Mr C Amaratunga, RGM, Kahawatte Plantations PLC, Regional Office,  
Pelmadulla Estate, Kahawatte
47. Mr S Hewagama, DM, Kahawatte Plantations PLC, Hunuwella Estate,  
Opanayake
48. Mr Wajira Hewage, Manager, Kahawatte Plantations PLC, Opatha Estate,  
Kahawatte
49. Mr L Perera, Manger, Kahawatte Plantations PLC, Pelmadulla Estate, Kahawatte
50. Mr Mahesh Bandara, Asst. Manager, Kahawatte Plantations PLC, Poranuwa  
Estate, Kahawatte
51. Mr M R Jayawansa, Asst. Manager, Kahawatte, Plantations PLC, Houpe Estate,  
Kahawatte
52. Mr U Premathilake, Kelani Valley Plantations PLC, Director, No 400, Deans Rd,  
Colombo 10

53. Mr B Gunasekara, GM, Kelani Valley Plantations PLC, Panawatte Estate, Yatiyantota
54. Mr D Sarasinghe, Senior Manager, Kelani Valley Plantations PLC, Edarapola Estate, Bulathkohupitiya
55. Mr R L Obeysekare, Kelanivalley Plantation PLC, Kelani Estate, Yatiyantota
56. Mr P K A H Thilakaratne, Senior Manager, Kelani Valley Plantation PLC, We-oya Estate, Yatiyantota
57. Mr W P S B Abeywardana, Senior Manager, Kelani Valley Plantation PLC, Dewalakanda Estate, Dehiowita
58. Mr M Wijedasa, Assit. Manager, Kelani Valley Plantation PLC,
59. Mr P De S A Gunasekara, GM, Namunukula Plantations PLC, No 310, High Level Rd, Nawinna, Maharagama
60. Mr J B Weerasekara, Superintendent, Namunukula Plantations PLC, Pallegoda Estate, Darga Town
61. Mr R Ranasinghe, Superintendent, Namunukula Plantations PLC, Eladuwa Estate, Matugama
62. Mr Kushan Karunathilake, Superintendent, Namunukula Plantations PLC, Citrus Estate, Padukka
63. Mr G S U De Silva, Superintendent, Namunukula Plantations PLC, Miriswatte Estate, Welipenna
64. Mr P P A Peris, General Manager, 54, Kirulapana Avenue, Colombo 06
65. Mr D Amarathunga, GM, Lalan Rubbers (Pvt) Ltd, Malwana, Biyagama
66. Mr N Senavirathne, GGM, Lalan Rubbers (Pvt) Ltd, Sapumalkande Group, Deraniyagala
67. Mr R Alahakoon, GGM, Lalan Rubbers (Pvt) Ltd, Udabage Group, Deraniyagala
68. Mr I Wakkumbura, Manager, Lalan Rubbers (Pvt) Ltd, Mahaoya Group, Dehiowita
69. Mr B Madagama, Superintendent, Maturata Plantations Ltd, Andapana Estate, Kamburupitiya
70. Mr L M A C Bandara, Superintendent, Maturata Plantations Ltd, Wilpita Estate, Akuressa
71. Mr M H P Gunarathna, Superintendent, Maturata Plantations Ltd, Diddenipota Estate, Matara
72. Mr C Jayalath, Asst. General Manager, Pussellawa Plantations PLC, Pussella Estate, Parakaduwa
73. Mr L M Amarathunga, Superintendent, Pussellawa Plantations PLC, Salawa Estate, Hanwella
74. Mr D Daswatte, DGM, Watawala Plantations PLC, Talangaha Estate, Nakiyadeniya
75. Mr Kingsly, Deputy Manager, Watawala Plantations PLC, Nakiyadeniya Estate, Nakiyadeniya

76. Mr Asanga Ekanayake, Senior Asst. Manager, Watawala Plantations PLC, Hemadola Estate, Udugama
77. Mr C Fernando, Executive Director, Malwatte Valley Plantations PLC, No 280, Dam Street, Colombo 12
78. Mr R M V Ratnayake, Group Manager, Malwatte Valley Plantations PLC, Moraliyoa Estate, Ruwanwella
79. Mr Gaya Nakandala, Consultant, Hokandara North
80. Mr S Seneviratne, Seneviratne Group, D.J. Wijesiriwardana Mawatha, Mt. Lavinia
81. Mr N M Amaraekara, Consultant, 37/9, Terrence Av, Mt. Lavinia
82. Mr Jayantha P Muthutantri, Consultant, No.4/4, Nelum Mw, Sirimal Uyana, Mt. Lavinia

***Provident Fund Committee***

01. Prof (Mrs) Sudheera Ranwala, Chairperson, Rubber Research Board
02. Dr V H L Rodrigo, Additional Director, RRI, Member
03. Mr D M S Dissanayake, Senior Administrative Officer, Secretary
04. Mr B S S Hewage, Senior Accountant, RRI, Treasurer
05. Mr T B Dissanayake, Experimental Officer, Elected Committee Member
06. Mr P K K S Gunarathna, Advisory Officer, Elected Committee Member
07. Mr J A S Chandrasiri, Experimental Officer, Elected Committee Member

***Chairman's Office & Board Secretariat***

Chairperson	- Prof (Mrs) Sudheera M W Ranwala
Acting Secretary	-Mrs Padma Balasooriya, Personal Assistant to the Chairman (upto 13.03.2020)
	- Mrs J A H Sandhya, Stenographer (Cover up duties of the secretary) (w.e.f. 13.03.2020)
Management Assistants	- Mrs H N Kanchana (upto 19.06.2020)
	- S M D S R D A Wijerathne (w.e.f. 23.06.2020)

**Lawyers**

Attorney General  
Attorney General's Department  
(Government Institutions)  
P O Box 502  
Colombo 12

**Bankers**

Bank of Ceylon  
Corporate Branch  
75, Janadhipathi Mawatha  
Colombo 1

**Auditors**  
Auditor General  
Auditor General's Department  
No.306/72, Polduwa Road,  
Battaramulla

Bank of Ceylon  
No.306/72,  
Agalawatta

**Contact details:**

**Head Office and Laboratories**

*Dartonfield, Agalawatta*

Telephones:

Director	034 - 2248457
Additional Director	034 - 2248458
Deputy Director Research (Biology)	034 - 3346118
General	034 - 2247426
	034 - 2247383
	034 - 3349999
	034 - 2248459

Fax:	034 - 2247427
<i>e-mail</i>	<a href="mailto:dirrri@slt.net.lk">dirrri@slt.net.lk</a>
Website	<a href="http://www.rrisl.lk">www.rrisl.lk</a>

**Board Office and Rubber Chemistry & Technology Laboratories**

*Telewela Road, Ratmalana*

Telephones:

Chairman	011 - 2635019
Fax	011 - 2633353
Board Office	011 - 2635142
Fax	011 - 2605171
Director	011 - 2633351
Fax	011 - 2633351
Deputy Director Research (Technology)	011 - 2633352

General	011 - 2635851
	011 - 2635852

Fax:	011 - 2605171
<i>e-mail</i>	<a href="mailto:dirrub@slt.net.lk">dirrub@slt.net.lk</a> , <a href="mailto:rubberresearch@gmail.com">rubberresearch@gmail.com</a>

*Sub stations*

**Nivitigalakele - Substation, Matugama**

Genetics and Plant Breeding Department  
Telephone: 034 - 2247368, 034 - 2247199  
e-mail: [rrigpb@sltnet.lk](mailto:rrigpb@sltnet.lk)

**Kuruwita - Substation, Ratnapura**

Telephone: 045 - 2262115, 045 - 3460537

**Polgahawela - Substation, Polgahawela**

Telephone: 037 - 3378191

**Monaragala - Substation, Monaragala**

Telephone: 055 - 3600707

Website: [www.rrisl.lk](http://www.rrisl.lk)

## RUBBER RESEARCH INSTITUTE OF SRI LANKA

### STAFF

#### DIRECTORATE

<i>Additional Director</i>	V H L Rodrigo, BSc Agric (SL), MSc (Essex) PhD (Wales)
<i>Deputy Director Research (Bio.)</i>	Mrs G P W P P Seneviratne, BSc (SL), PhD (Bath)
<i>Deputy Director Research (Tech.)</i>	S Siriwardene, BSc (SL), MSc (Australia) PhD (Malaysia)

#### RESEARCH DEPARTMENTS

##### Agronomy Departments

<b>Genetics and Plant Breeding</b>	<i>(at Nivithigalakele Substation, Matugama)</i>
<i>Head of Department</i>	Mrs S P Withanage, BSc Agric (SL), MSc (India), PhD (Malaysia)
<i>Senior Research Officer</i>	K K Liyanage, BSc Agric (SL), MPhil (SL), PhD (China)
<i>Research Officers</i>	Miss P V A Anushka, BSc Agric (SL) (upto Aug.) Mrs T T D Dahanayake, BSc Agric (SL)
<i>Experimental Officers</i>	T B Dissanayake T M S K Gunasekera H P Peries, Dip. Agric (Kundasale) Mrs A K Gamage, BSc (SL)
<i>Technical Officers (Research &amp; Development)</i>	B W A N Baddewithana, BSc Agric. (SL), MPhil (SL) Mrs N S Jayasinghe, BSc Agric. (SL)
<i>Management Assistant (Clerical)</i>	Mrs S D P K L Peiris
<b>Plant Science</b>	<i>(at Dartonfield, Agalawatta)</i>
<i>Head of Department</i>	N M C Nayanakantha, BSc (SL), MSc (India), PhD (India)
<i>Senior Research Officer</i>	T U K Silva, BSc Agric (SL), MPhil (SL)
<i>Research Officers</i>	Mrs D S A Nakandala, BSc Agric (SL), PhD (SL) W D M N de Alwis, BSc (SL)
<i>Experimental Officers</i>	Mrs R K Samarasekera D L N de Zoysa



<i>Technical Officers (Research &amp; Development)</i>	P D Pathirana, BSc (SL) P K W Karunathilake, Dip. Agric (Ratnapura) R Handapangoda, BSc Agric (SL) Mrs U Dissanayake, HND, BSc (SL), MSc (SL) Miss W K S W Watawala, BSc (SL) R P D Priyadharshana, BSc (SL) Miss H M Subsinghe, BSc (SL) Mrs U N Udaya Kumari, BSc (SL) Miss W M D Wickremakumari, BSc (SL)
<i>Management Assistants (Clerical)</i>	H D H C Arunasiri, HND (Kundasale) Mrs H D D E Jayawardena Mrs Aruni de Almeida
<b>Plant Pathology and Microbiology</b> <i>Head of Department</i>	<i>(at Dartonfield, Agalawatta)</i> Mrs T H P S Fernando, BSc (SL), MPhil (SL), PhD (SL)
<i>Research Officer Experimental Officers</i>	Mrs M K R Silva, BSc Agric (SL), MSc (SL) Mrs B I Tennakoon, Dip. Agric (Kundasale) Mrs E A D D Siriwardene, BSc (SL) S C P Wijyaratne, NDT Agric (Hardy) E A D N Nishantha, Dip. Agric. (Ratnapura), BIS (Agric) (SL)
<i>Technical Officers (Research &amp; Development) Management Assistant (Clerical)</i>	Miss A H M N R Abeyrathna, BSc (SL) D A N Mallikaarachchi, BSc (SL) Mrs K A D Y Madushani Lanka
<b>Soils and Plant Nutrition</b> <i>Principal Research Officer</i>	<i>(at Dartonfield, Agalawatta)</i> Mrs R P Hettiarachchi, BSc (SL), MPhil (SL), PhD (SL)
<i>Research Officers</i>	Mrs H A R K Jayawardana, BSc Agric. (SL) L A T S Liyanaarachchi, BSc Agric. (SL)
<i>Experimental Officers</i>	Miss V U Edirimanne, BSc (SL) Miss A P Thewarapperuma P D T C Gunatilleke, NDT (Agric)
<i>Technical Officers (Research &amp; Development)</i>	Mrs Eranga de Silva, NDT C G Malawaraarachchi, Dip. in Agric. (Hardy) Mrs M Kulathunga, BSc (SL) Mrs R M Baddevidana, BSc (SL) Mrs P D S D O Rathnasooriya, BSc (SL) M H W Gayan, BSc (SL) B M K Rangana, BSc (SL)

*Management Assistant  
(Stenography)*

Mrs K A D L Rupasinghe Perera

**Biochemistry and Physiology**  
*Principal Research Officer*

*(at Dartonfield, Agalawatta)*

Mrs K V V S Kudaligama, BSc (SL),  
MPhil (SL), PhD (SL)

*Research Officer*

Miss N P S N Karunaratne, BSc (SL)

*Experimental Officer*

M K P Perera, BSc (SL)

*Technical Officers (Research &  
Development)*

Mrs P A D T L Madushani, Diploma in Agric.

Miss N N Abewardena, BSc (SL)

L T B K Fernando, BSc (SL)

*Management Assistant (Clerical)*

Mrs H A Manoji Erandika

**Advisory Services**

*(at Telewela Road, Ratmalana)*

*Head of Department*

D M A P Dissanayake, BSc Agric. (SL)

PhD (Aberdeen) (upto Dec)

*Advisory Officer*

P K K S Gunaratne, BSc Agric. (SL)

*Assistant Training Officer*

Miss K G P Manahari, BSc (SL)

*Rubber Extension Officers*

R M S Ratnayake, NDT Agric. (Hardy)

D E P M Nanayakkara, Dip. Agric. (Aquinas)

Nihal Gamage, Dip. Agric. (Angunakolapelessa)

S G G Wijesinghe

I P L Kithsiri

J A S Chandrasiri

W P G D C P K Senanayake, NDT Agric (Hardy)

T L Ramanayake, BSc (SL)

A R Kulathunga, BSc (SL)

H G M G Jayasinghe, BSc (SL)

Mrs K K I Jayasundera, BSc (SL)

D S Dissanayake, BSc (SL)

K D K L Siriwardena, BSc (SL)

Mrs G R Tennakoon, BSc (SL)

Miss R R N D Thara, BSc Agric. (SL) (upto Feb.)

P V S Madubashana, BSc Agric. (SL)

M N P de Silva, BSc Agric (SL)

E W S Ruwan Kumara, BSc (SL)

S M A Samarakoon, Dip. Agric. (Kundasale)

*Management Assistants (Clerical)*

Mrs J N R Jayasinghe

Mrs S M Kaluarachchi (upto June)

R G A S Dharmaratne

T R C Silva (upto Aug.)

P Sachini Ishara

## Technology Departments

### **Rubber Technology and Development** (at Telewela Road, Ratmalana)

<i>Head of Department</i>	Mrs D G Edirisinghe, BSc (SL), MSc (SL) MPhil (UK), PhD (SL)
<i>Research Officers</i>	W D M Sampath, BSc (SL) Mrs U A Weerasinghe, BSc (SL)
<i>Experimental Officer</i>	Mrs G M Priyanthi Perera, BSc (SL), MSc (SL)
<i>Technical Officers</i> (Research & Development)	V G M J Abeywardena, NDT Miss S G P Bhagayawedha, NDT K I D P Perera, BSc (SL) Miss P K I L Jayaratne, BSc (SL) K N D Tillekeratne, BSc (SL) Mrs E N N Nanayakkara, BSc (SL) A H R W M N Gunawardena, BSc (SL)
<i>Management Assistant (Clerical)</i>	Miss S M D S R de A Wijeratne (upto June)

### **Polymer Chemistry**

<i>Research Officers</i>	(at Telewela Road, Ratmalana) Mrs I H K Samarasinghe, BSc (SL)* Y R Somaratne, BSc (SL), MSc (SL)
<i>Experimental Officer</i>	Mrs N Jayawardane, Dip. Agric. (Bibile)
<i>Technical Officers (Research &amp; Development)</i>	Mrs H M H Dhanukamalee, BSc (SL) Mrs P S V Rupasinghe, BSc (SL) D V D Mallikarachchi, BSc (SL) Mrs H L T Tharaka, BSc (SL)
<i>Management Assistant (Clerical)</i>	N W E C Maduranga

### **Raw Rubber and Chemical Analysis** (at Telewela Road, Ratmalana)

<i>Senior Research Officer</i>	Mrs A P Attanayake, BSc (SL), PhD (SL)
<i>Research Officer</i>	A M K S P Adikari, BSc (SL), MPhil (SL)
<i>Experimental Officers</i>	Mrs C S Lokuge Miss D M S Wijesekera, Dip. Rubber Tech. (PRI)
<i>Technical Officers</i> (Research & Development)	Miss S P Wijewardena, BSc (SL) (upto June) Miss N C Y Kithmini, BSc (SL) Miss M U D S Weerasinghe, BSc (SL) H D M S Wijewardena, BSc (SL) K A S T Koswatta, BSc (SL) Mrs. N S Siriwardena, BSc (SL), MSc (SL)
<i>Management Assistant (Clerical)</i>	Miss G M Udayakumari, BSc (SL) Miss W D D Samanmali

**Raw Rubber Process Development  
and Chemical Engineering**

*Research Officer*

*Experimental Officers*

*Technical Officers*

*(Research & Development)*

*Management Assistants (Clerical)*

*(at Telewela Road, Ratmalana)*

Y C Y Sudusinghe, BSc (SL) (upto Oct.)

Mrs U M S Priyanka, BSc (SL), MSc (SL)

Mrs V C Rohanadeepa

A K D W Prasad

R D Illeperuma, BSc (SL)

Miss P K N N Sandamali, BSc (SL)

WA S Bandara, BSc (SL)

Mrs H A Janani Lakshika, BA (SL)

Mrs P D S Dilhani

**Sections/Units**

**Biometry Section**

*Principal Research Officer*

*Research Officer*

*Experimental Officer*

*Technical Officer*

*(Research & Development)*

*Management Assistant (Clerical)*

*(at Dartonfield, Agalawatta)*

Mrs B W Wijesuriya, BSc Agric (SL),

MPhil (SL), PhD (SL)

A M R W S D Ratnayake, BSc (SL)

O V Abeyawardene, Dip. Agric. (Kundasale)

Mrs M I N Silva, BSc (SL) (upto Oct.)

Mrs S N Munasinghe

**Adaptive Research Unit**

*Principal Research Officer*

*Research Officer*

*Technical Officers*

*(Research & Development)*

*Management Assistant (Clerical)*

*(at Dartonfield, Agalawatta)*

Mrs E S Munasinghe, BSc Agric (SL), PhD (SL)

Mrs B M D C Balasooriya, BSc Agric (SL)

P M M Jayatilleke, NDT (Agric.)

Mrs N M Piyasena, Dip. in Agric.

Mrs M A Randima Srimalee

**Agricultural Economics Unit**

*Research Officers*

*(at Dartonfield, Agalawatta)*

J K S Sankalpa, BSc (SL), MSc (SL)

Miss P G N Ishani, BSc Agric. (SL)

**Library and Publications Unit**

*Librarian & Publication Officer*

*Library Assistant & Assistant*

*Publication Officer*

*Experimental Officer*

*Library Assistant & Publication*

*Assistant (Ratmalana)*

*Management Assistant (Clerical)*

*(at Dartonfield, Agalawatta)*

Mrs N C D Wijesekara, BA (SL), MSSc (SL)

Mrs R M Amaratunga, Intermediate; Lib. Sci.

Doc. & Info. (SLLA)

Miss D M C Wijesekara, Dip. Rubber Tech (PRI)

Mrs D N C Amarathunga

P M P Jayantha

**Audio Visual and Information Technology Unit** (at Dartonfield, Agalawatta)  
*Network Administrator* S R D C P Peiris, BSc (SL)

**Management Divisions**

**Administration Department (Agalawatta)** (at Dartonfield, Agalawatta)  
*Senior Administrative Officer* D M S Dissanayake, BSc (Mgt.) (SL),  
MHRM (SL)  
*Registered Medical Practitioner* M Subasinghe  
*Management Assistants (Clerical)* Mrs P W Neelamanie  
Mrs J A D Wijyanthi  
Mrs B D Niranjala  
Mrs O W D Namali Udayanthi  
Mrs P C Athukorala  
Mrs Thamosha Munasinghe  
Mrs O W D Nilusha Udayanthi  
Mrs M N D Perera  
Mrs B Chandralatha, BA (SL)  
Miss M G L Niroshani  
*Management Assistant* Mrs J A H S Kumari  
*(Stenography)*  
*Telephone Operator* Mrs J A D C Preethika

**Administration Unit (Ratmalana)** (at Telewela Road, Ratmalana)  
*Administrative Officer* Mrs U K Akila Tharinduni, BSc (SL)  
*Management Assistants (Clerical)* A T Senaratne  
Mrs A R M de Alwis  
*Telephone Operator* Mrs G D D Kalamini

**Internal Audit Unit** (at Dartonfield, Agalawatta)  
*Internal Auditor* Mrs M S I Senadeera, IFA, IPFA, IRCA, LICA,  
FPFA, PGDM  
*Management Assistant (Clerical)* M A D W K Tilakeratne

**Works Section** (at Dartonfield, Agalawatta)  
*Resident Engineer* K A D K Chathuranga, BSc (Eng.)  
*Engineering Assistant* Mrs W D D Prasadini, NDES

---

<i>Technological Officer (Civil)</i>	M A D K Jayasumana, NCT
<i>Transport Officer</i>	U L D R L Gunasinghe
<i>Technological Officer (Mech.)</i>	H J P Fernando, HNDE
<i>Management Assistants (Clerical)</i>	Mrs J A S Dharshanie (Dip. in Management)
	Mrs K K D K P Ranaweera
	Mrs M S W H Kumari, BSc (SL)
	U Samantha Munindradasa, BA (SL) (upto Sept.)

<b>Accounts Section</b>	<i>(at Dartonfield, Agalawatta)</i>
<i>Senior Accountant</i>	S S Hewage, CPFA (UK), CBA, FPFA
<i>Accountant</i>	Mrs A M Lasanthi, BSc (SL), MBA (SL), CBA, APFA
<i>Management Assistants (Accounting)</i>	Mrs R Handungoda, (upto Oct)
<i>Management Assistants (Clerical)</i>	Mrs G P Kukulewithana
	Mrs C Dissanayake
	A K D A Wickremasinghe, (upto Nov.)
	Mrs S I K Pathirage
	Mrs S A Niluka Harshani
	Mrs K K D Y L Ranaweera
	Miss K K T L Jayasekera
	Mrs R P Thilini
	J A J R Lakmal, BA (Mgt.)
	K A Dilan Sampath
	Mrs Erandi Kanchana Jayasinghe, BA (SL)
	Mrs S R Sinhabahu
	Harith Kalutharawithana, BSc (SL), MBA (SL)
	G N K Gunasena
	Mrs K G P Hasara
<i>Cashier</i>	Mrs G A D D Jayawardena

### **Sub – stations & Estates**

<b>Kuruwita Sub-Station</b>	<i>(at Kuruwita)</i>
<i>Field Officer</i>	D D A Jayathunga, Dip.in Agric.
<i>Management Assistants (Clerical)</i>	D S Jayasinghe
	K D P Senaratne
<b>Polgahawela Sub-Station</b>	<i>(at Narampola Estate, Nungamuwa, Yatigaloluwa)</i>
<i>Management Assistant (Clerical)</i>	D P N P Dissanayake

**Moneragala Sub-Station**

*Field Officers*

*Management Assistants (Clerical)*

*(at Kumbukkana, Moneragala)*

V G D Nishantha Gunaseela

N V U S Vijitha Kumara

Mrs D M P Sandun Kumari

M M Chamath Kumara

**Dartonfield Group**

*Senior Manager - Estate*

*Field Officer (Nivitigalakele)*

*Management Assistants (Clerical)*

P A Lukshaman, BSc (SL)

B M Siriwardena

H D D Achinda

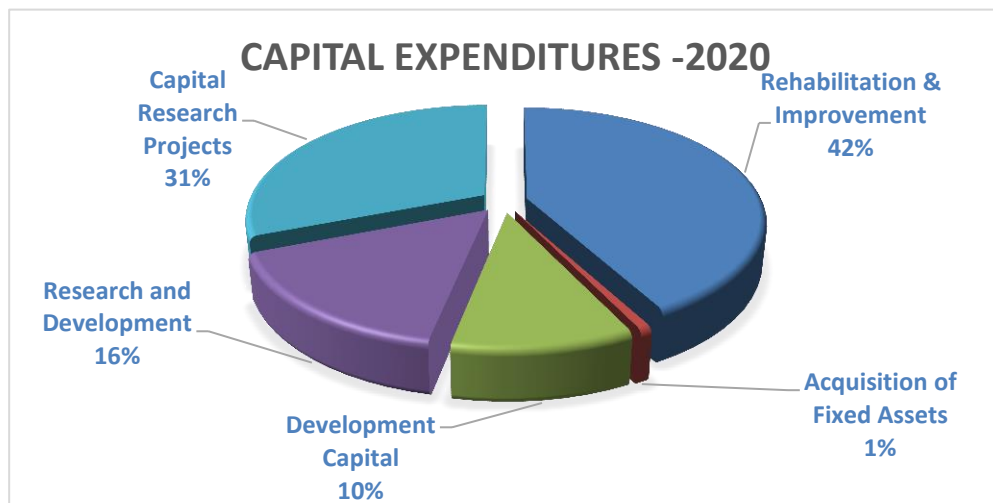
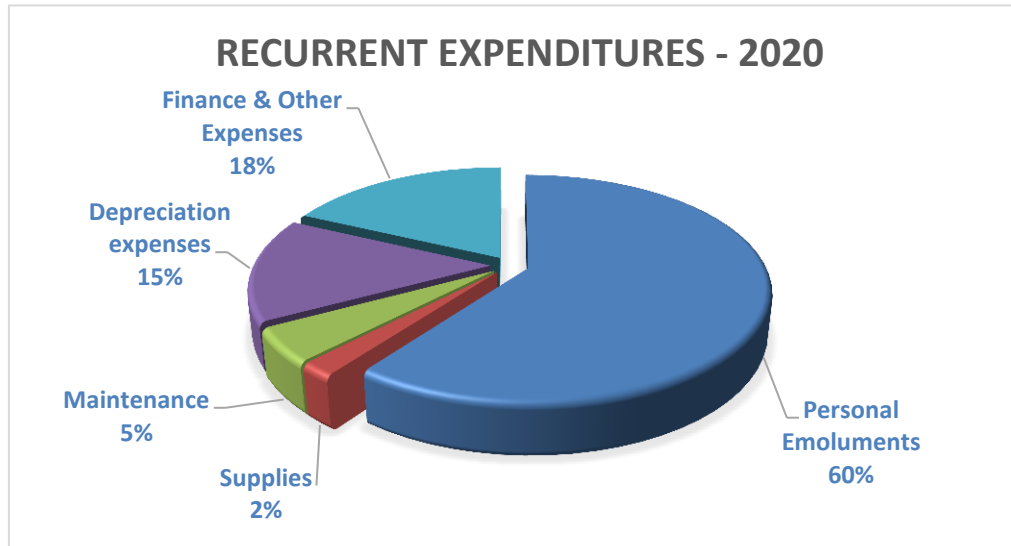
M A N Sachith Pawinda

T D Harsha

\*Full pay study leave

## Financial Statements

### Analysis of Recurrent and Capital Expenditures for the Financial Year 2020





**RUBBER RESEARCH INSTITUTE OF SRI LANKA  
FINANCIAL STATEMENTS - 2020  
CONTENTS**

	<b>Page No.</b>
Statement of Financial Position as at 31.12.2020	38
Statement of Financial Performance for the year ended 31.12.2020	39
Statement of Consolidated Cash Flow as at 31.12.2020	40
Statement of Changes in Net Assets/Equity	41
Notes to the Financial Statements	42-48
Note 01- Property, Plant & Equipment	49-50
Note 02- Other Financial Assets	
2B I Kuruwita Estate (KE)	51
2B II Dartonfield Estate (DF)	51
Note 03 - Other Current Assets	52
Note 04- Inventories/Stocks	53
Note 04 A - Working Progress	54
Note 05- Receivables	55
Note 06- Investment	55
Note 07- Cash at Bank and in Hand	56
Note 08- Payables	57
Note 09- Provision for Audit Fee	58
Note 10- Provision for Gratuity	58
Note 11- Capital Grants	59
Note 12- Accumulated Surpluses/(Deficits)	59
Note 13- Other Income	60
Note 14 - Personal Emoluments	61
Note 14A - Wages, Salaries & Employee Benefits - DF Estate	62
Note 14B - Wages, Salaries & Employee Benefits - Kuruwita Estate	63
Note 14C - Wages, Salaries & Employee Benefits Monaragala Sub Station & Polgahawela Sub Station	64
Note 15- Travelling	65
Note 16- Suppliers and Consumables	66
Note 17- Depreciation of Non Current Assets	67
Note 18- Maintenance & Operational Expenditure Vehicles	68-69
Note 19- Contractual Services	70
Note 20- Research and Departments Exp.	71
Note 21- Other Operating Expenses	72
Note 22- Dartonfield Group Estate Working Accounts	73

Note 23- Kuruwita Estate Working Accounts	74
Note 24- Kumarawatta Estate Working Accounts	75
Note 25- Narampola Estate Working Accounts	75
Note 26A - NSF Grants	76
Note 26B - Special Projects	77
Schedule 01 - Inventories/Stocks RRI	78
Schedule 02 - Stock Value - Kuruwita Estate	79
Schedule 03 - Stock Value - Dartonfield Estate	80
Schedule 04 - Deposits	81
Schedule 05 - Other Debtors, General Debtors, Debtors, Loan Receivables	82
Schedule 06 - Doubtful Debtors	83
Schedule 07 - Trade & Other Receivable - Kuruwita Trade & Other Receivable - DF Estate	84
Schedule 08 - Creditors	85
Schedule 09 - Payables Kuruwita Estate	86
Schedule 10 - Payables DF Estate	87
Schedule 11 - Accrued Expenses	88
Schedule 12 - Other Capital Grants	89
Labour rates and break down of COP in Dartonfield & Kuruwita	90

**RUBBER RESEARCH BOARD OF SRI LANKA - STATEMENT OF FINANCIAL POSITION  
AS AT DECEMBER 31, 2020**

ASSETS	Note	2020		2019	
		Rs		Rs	
<b>Non-Current Assets</b>					
Land and Buildings	01	232,964,274.96		227,370,444.28	
Infrastructure, Plant and Equipment		433,871,654.73		409,545,692.75	
Intangible Assets		17,798,867.44		22,072,838.27	
			684,634,797.13		658,988,975.29
<b>Current Assets</b>					
Other Financial Assets	02	1,571,273.02		8,684,975.90	
Other Current Assets	03	25,245,395.96		24,153,839.18	
Inventories	04	18,240,546.55		17,419,593.24	
Working Progress	04-A	41,244,995.97		34,765,643.01	
Receivables	05	7,057,864.08		25,113,697.91	
Investments in Associates	06	559,073.03		558,906.80	
Cash and cash Equivalents	07	92,128,990.98		57,084,159.84	
			186,048,139.59		167,780,815.88
<b>Total Assets</b>			870,682,936.72		826,769,791.17
<b>LIABILITIES</b>					
<b>Current Liabilities</b>					
Payables	08	(58,516,955.64)		(94,573,442.05)	
Short -Term Provisions	09	(2,589,553.96)		(3,182,598.05)	
			(61,106,509.60)		(97,756,040.10)
<b>Non-Current liabilities</b>					
Employee Benefits	10	(151,253,846.00)		(143,314,133.50)	
			(151,253,846.00)		(143,314,133.50)
<b>Total Liabilities</b>			(212,360,355.60)		(241,070,173.60)
<b>Total Net Assets</b>					
<b>NET ASSETS/EQUITY</b>			<b>658,322,581.12</b>		<b>585,699,617.57</b>
Accumulated Fund	11	1,056,728,472.15		1,006,144,036.22	
Accumulated Surpluses/(Deficits)	12	(573,128,569.59)		(584,681,074.55)	
Revaluation Surpluses/(Deficits)		174,722,678.56		164,236,655.90	
<b>TOTAL NET ASSETS/EQUITY</b>			<b>658,322,581.12</b>		<b>585,699,617.57</b>

The Financial Statements have been prepared in accordance with Sri Lanka Public Sector Accounting Standards (SLPSAS).

  
B S S Hewage

Senior Accountant -RRI



Additional Director - RRI

The accounting policies and notes on pages from 38 to 89 from an integral part of these Financial Statements. The Board of Directors is responsible for the preparation and presentation of these Financial Statements. These Financial Statements were approved by the Board of Directors and signed on their behalf.



Prof.(Mrs.) Sudheera Ranwala  
Chairperson - RRB



Board Member  
Rubber Research Board

**STATEMENT OF FINANCIAL PERFORMANCE FOR THE YEAR ENDED DECEMBER 31, 2020**

Description	Note	RR		Df. Estate		K'wita Estate		Kumarawatta Estate		Narampola Estate		Total	
		2020	2019	2020	2019	2020	2019	2020	2019	2020	2019	2020	2019
		Rs	Rs	Rs	Rs	Rs	Rs	Rs	Rs	Rs	Rs	Rs	Rs
Transfers from other government entities		414,000,000.00	403,700,000.00									414,000,000.00	403,700,000.00
Other revenue	13	10,896,925.52	15,187,176.92							30,375.00		10,927,300.52	15,187,176.92
Deferred Income		138,024,777.17	76,537,795.29	3,906,414.96	3,459,993.02	1,106,234.35	1,061,368.25					143,037,426.49	81,059,156.57
Gross Profit Df. Estate & K'wita Estate	22,23	-	-	48,357,449.55	39,438,719.61	25,796,357.62	20,699,322.98					74,153,807.17	60,138,042.59
Other Income Estate (Projects)	22,23,24,25	-	-	11,469,531.36	141,129.63	3,973,924.91	6,273,161.00	959,178.38	-	4,291,722.75	229,180.08	20,694,357.40	6,643,470.71
Special Capital Projects - MPI			62,019,951.82									-	62,019,951.82
Special Capital Projects - CF			29,811,774.63									-	29,811,774.63
NSF and other Projects	26		8,354,167.09									-	8,354,167.09
<b>Total Revenue</b>		<b>562,921,702.69</b>	<b>595,610,865.75</b>	<b>63,733,395.87</b>	<b>43,039,842.26</b>	<b>30,876,516.88</b>	<b>28,033,852.23</b>	<b>959,178.38</b>	<b>-</b>	<b>4,322,097.75</b>	<b>229,180.08</b>	<b>662,812,891.58</b>	<b>666,913,740.33</b>
<b>Less: Expenses</b>													
<b>Expenses</b>													
Wages, Salaries and employee benefits	14,15,14A,14B,14C	315,631,115.09	309,631,180.27	45,632,624.01	40,013,571.99	20,270,187.07	19,407,581.49	6,772,664.02	5,973,214.54	4,515,760.69	-	392,822,350.88	375,025,548.29
Grants and other transfer payments												-	-
Supplies and consumables used	16,14A,14B,14C	8,038,784.48	16,750,511.84	2,323,317.25	2,822,819.87	1,194,743.58	1,429,708.73	602,651.57	220,198.11	969,368.72	169,689.50	13,128,865.60	21,392,928.05
Depreciation and amortization expenses	17,14A,14B,14C	90,455,408.81	76,537,795.29	5,013,935.54	3,459,993.02	1,404,797.73	1,061,368.25					96,874,142.09	81,059,156.57
Maintenance of property, plant and equipment	18,21,14A,14B	25,507,223.82	39,382,384.30	3,742,789.07	5,116,650.19	2,602,547.95	3,153,883.53					31,852,560.84	47,652,918.02
Other expenses	19,20,24,25	111,260,413.59	90,916,459.60	3,146,243.07	1,772,330.55	1,830,475.33	317,116.51	119,969.00	866,025.51	85,922.41	93,169.39	116,443,023.40	93,965,101.56
Finance Costs	19,14A,14B	41,295.00	68,104.65	583,645.90	477,268.04	208,026.24	176,339.58					832,967.14	721,712.27
Other Expenditure Estate (Projects)	23,24						690,470.86			10,687.50		-	701,158.36
Special Capital Projects - MPI			62,019,951.82									-	62,019,951.82
Special Capital Projects - CF	20		29,811,774.63									-	29,811,774.63
NSF and other Projects	26		8,354,167.09									-	8,354,167.09
<b>Total Expenses</b>		<b>550,934,240.79</b>	<b>633,472,329.49</b>	<b>60,442,554.84</b>	<b>53,662,633.66</b>	<b>27,510,777.90</b>	<b>26,236,468.95</b>	<b>7,495,284.59</b>	<b>7,070,125.66</b>	<b>5,571,051.82</b>	<b>262,858.89</b>	<b>651,953,909.95</b>	<b>720,704,416.66</b>
<b>Surplus/(Deficit) for the Period</b>		<b>11,987,461.90</b>	<b>(37,861,463.74)</b>	<b>3,290,841.03</b>	<b>(10,622,791.40)</b>	<b>3,365,738.98</b>	<b>1,797,383.28</b>	<b>(6,536,106.21)</b>	<b>(7,070,125.66)</b>	<b>(1,248,954.07)</b>	<b>(33,678.81)</b>	<b>10,858,981.63</b>	<b>(53,790,676.31)</b>

**CONSOLIDATED CASH FLOW STATEMENT  
FOR THE YEAR ENDED 31 DECEMBER 2020**

	<b>2020</b>		<b>2019</b>	
	<b>Rs</b>		<b>Rs</b>	
<b><u>Operating Activities</u></b>				
Surplus/Deficit		10,858,982		(44,574,425)
Non Cash Movements				
Add : Depreciations	90,455,409			76,537,795
Provision for Gratuity	-			24,188,548
Provision for bad debtors	1,278,018			(332,308)
Prior Year adjustment	#REF!			(1,155,670)
Less : Interest on Investment	(430,189)			(430,189)
Deferred Income	(143,037,426)			(81,059,157)
Deferred Special and NSF				
<b>Net Cash Flow before working Capital Changes</b>		#REF!		17,749,018
<b><u>Working Capital Changes</u></b>				
Increase /( Decrease) Payables				38,253,074
( Increase) / Decrease other current Assets				(23,691,845)
Gratuity paid				(24,188,548)
<b>Net Cash Flow form Operating Activity</b>				(9,627,319)
<b><u>Investing Activities</u></b>				
Purchase of Property ,Plant and Equipment	-			716,652
Interest Income on Investment	430,189			430,189
<b>Net Cash Flow from Investing Activity</b>		430,189		1,146,842
<b><u>Finance Activities</u></b>				
Fund Received from Treasury for Capital Grant	80,500,000			80,500,000
Net Cash flow of NSF	717,424			5,396,201
Fund Received for Special Project	33,122,178			
<b>Net Cash Flow from Financing Activity</b>		114,339,602		85,896,201
<b>Net Cash Flow for the Year</b>	-	#REF!		<b>50,590,317</b>
<b>Cash and Cash Equivalents at Beginning of the Year</b>		<b>225,909,874</b>		<b>175,319,557</b>
<b>Cash and Cash Equivalents at End of the Year</b>		#REF!		<b>225,909,874</b>

**STATEMENT OF CHANGES IN NET ASSETS/EQUITY ENDED DECEMBER 31, 2020**  
**ATTRIBUTABLE TO OWNERS OF THE CONTROLLING ENTITY**

	<b>Contributed Capital</b>	<b>Other Reserves</b>	<b>Translation Reserves</b>	<b>Accumulated Surpluses/(Deficits)</b>	<b>Total</b>	<b>Minority Interest</b>	<b>Total net Assets/equity Rs</b>
Balance at December 31, 2017							
Changes in accounting policy	879,654,719.38	-	-	(482,399,386.43)	397,255,332.95	-	397,255,332.95
Restated balance							
<b>Change in net asset/equity for 2017</b>							
Gain on property revaluation							
Loss on revaluation of investments							
Exchange differences on translating							
Funds Received					-		-
Prior Year Adjustment				(26,084,947.48)	(26,084,947.48)		(26,084,947.48)
Net revenue recognized directly in net asset/equity	81,729,567.69			(508,484,333.91)	(426,754,766.22)		(426,754,766.22)
Surplus for the period				(21,250,394.05)	(21,250,394.05)		(21,250,394.05)
<b>Total recognized revenue and expenses for the period</b>							
<b>Balance at December 31, 2018</b>							
<b>Carried forward</b>	961,384,287.07	-	-	(529,734,727.96)	431,649,559.11	-	431,649,559.11
Balance at December 31, 2018 brought forward	961,384,287.07	-	-	(529,734,727.96)	431,649,559.11	-	431,649,559.11
change in net assets/equity for 2019	44,759,740.15	-	-		44,759,740.15	-	44,759,740.15
<b>Loss on property Revaluation</b>							
Gain on revaluation of investments				164,236,655.90	164,236,655.90		164,236,655.90
Prior Year Adjustment				(1,155,670.28)	(1,155,670.28)		(1,155,670.28)
Exchange differences on translating foreign operations	1,006,144,027.22			(366,653,742.34)	639,490,284.88		639,490,284.88
Net revenue organized directly in net assets / equity							
Deficit for the period				(53,790,676.31)	(53,790,676.31)		(53,790,676.31)
<b>Total recognized revenue and expenses for the period</b>							
<b>Balance at December 31, 2019</b>	1,006,144,027.22			(420,444,418.65)	585,699,608.57		585,699,608.57
Balance at December 31, 2020 brought forward	1,056,728,472.15			(584,681,074.55)	472,047,397.60		472,047,397.60
change in net assets/equity for 2020							
<b>Loss / Profit on property Revaluation</b>							
Gain on revaluation of investments			174,722,678.56		174,722,678.56		174,722,678.56
Surpluses / Deficit for the period				10,858,981.63	10,858,981.63		10,858,981.63
Prior Year Adjustment				790,401.85	790,401.85		790,401.85
Disposal of Assets Surpluses / (Deficits)				(96,878.52)	(96,878.52)		(96,878.52)
<b>Balance at December 31, 2020</b>	<b>1,056,728,472.15</b>	<b>-</b>	<b>174,722,678.56</b>	<b>(573,128,569.59)</b>	<b>658,322,581.12</b>	<b>-</b>	<b>658,322,581.12</b>

## **1. Corporate Information**

### **1.1 Reporting Entity**

The Rubber Research Board (RRB) was established as a Public Corporation under the Rubber Research Ordinance. This Ordinance has been amended from time to time; the most recent introduction has been the “Rubber Research Bill Part II of April 2003 with the amendment No. 28”. The RRB coming under the purview of Ministry of Plantation Industries and the registered office of the RRB is located at Thelawala Road, Rathmalana.

### **1.2 Principal Activities and Nature of Operations**

The Mission of RRB is to revitalize the rubber sector by developing economically and environmentally sustainable innovations and transferring the latest technologies to the stakeholders through training and advisory services.

### **1.3 Number of Employees**

The number of employees of the RRB as at 31st December 2020 amounted to. 367. The comparative figure for the year 2019 was 386.

### **1.4 Financial Year**

The Financial year of the RRB is the 12 months period ended by 31<sup>st</sup> December 2020.

### **1.5 Date of Authorization for Issue**

The Financial Statements for the year ended 31/12/2020 of RRB were authorized for issue by the Board of Management on 25<sup>th</sup> February 2021.

## **2. Significant Accounting Policies**

### **2.1 Basis of preparation of Financial Statements**

The Financial Statement of the RRB is prepared in Sri Lankan Rupees on a historical cost basis and presented in Sri Lankan Rupees.

### **2.2 Statement of Compliance**

The Financial Statement of the RRB has been prepared in accordance with the Sri Lanka Public Sector Accounting Standards (SLPSAS).

### **2.3. Assets and Basis of Valuation**

- 2.3.1 Property Plant and Equipment are recorded at cost less depreciation in the financial statement.  
The cost of Property Plant and Equipment are the market value or cost of purchase with any incidental expenses
- 2.3.2 Revaluation values of Motor Vehicles, Machinery & Tools, Laboratory Equipment, Audio Visual Equipment, Furniture & Fixtures, Office Equipment and Others Assets are recorded in the financial statements excluding Roads, Lands and Buildings.
- 2.3.3 Roads, Lands and Buildings are recorded at cost less depreciation in the financial statement due to non-receipt of revaluation values from Valuation Department.
- 2.3.4 Non biological assets of estates are shown separately in the financial statements.

### **2.4 Depreciation Policy**

- 2.4.1 The depreciation for Fixed Assets are determined separately for each significant part of an item of Property, Plant and Equipment and begin to depreciate when it is available for use. Depreciation is not provided for lands.
- 2.4.2 The depreciation charges are determined separately for each significant part of an item of Property, Plant and Equipment and begin to depreciate when it is available for use.
- 2.4.3 The provision for depreciation is calculated at straight line method on the cost of all Property Plant and Equipment. The effective rates are as follows.

<b>Description</b>	<b>Percentage</b>
Buildings	2.50%
Intangible Assets	20.00%
Furniture, Fittings & Office Equipment	20.00%
Power & Water Supply	10.00%
Machinery & Tools	12.50%
Lab Apparatus	20.00%
Motor Vehicles	20.00%
Library Books	20.00%
Documentary Film	12.50%



<b>Description</b>	<b>Percentage</b>
Earth Slip Project	4.00%
Other assets	10.00%
Effluent Treatment Plant	4.00%
Audio Visual Equipment	20.00%
Road Devolopment	10.00%
Solar Pannel - DF Estate	20.00%
CCTV Camera	20.00%
Surge Protection Device	20.00%
Rubber in bearing Df & k'wita	5.00%
Tea Replanting K'wita	5.00%
Replanting Cinnamon K'wita & Df	5.00%
Upgrading Telecomonication	2.50%

#### **2.5 Inventories**

Inventories consist of spare parts, maintenance items, cleaning materials and stationery stock etc. are stated at the cost / net realization value.

#### **2.6 Receivables**

Receivables are stated at the amounts identified as active Debtors, receivables etc.

#### **2.7 Provision for Bad and Doubtful Debts**

Provisions for bad and doubtful debts is calculated and provided in the accounts as follows.

<b>Period of outstanding</b>	<b>Provision Made</b>
Less than one year	Nil
2015 to 2019	5.0%
Up to 2015	100.0%

#### **2.8 Cash and cash equivalent**

Cash and cash equivalent consists of Investment, cash at banks and cash in hand.

**2.9 Conversion of foreign exchange:**

Foreign currency has been converted at prevailing rates.

**2.10 Retirement Gratuity**

Provision has been made in the Financial Statements for retirement gratuities equivalent to an amount calculated based on a half month's salary of the last month Financial Year of all employees for each completed year of service, commencing from the first year of service. However under the payment of Gratuity Act No 12 of 1983, the liability to an employee arises only on completion 5 years of continued service.

**2.11 Government Grant**

**2.11.1 Recurrent Grant**

The Recurrent Grant received from the government is reflected in the Income Statement as the source of income of the RRB.

**2.11.2 Capital Grant**

The Capital Grant received from the government has been set up as Deferred Income which is recognized as income on a systematic and rational basis over the useful life time of the assets.

**2.11.3** Replanting subsidies have been set off against replanting expenditure and net amount has been represented in the balance sheet under fixed assets.

**2.11.4 Other Grants**

National Science Foundation (NSF) and Special Project Grants for the year 2020 have been shown under the Note No 26A and 26B. The amount equal to the expenditure for the year 2020 has been treated as NSF and Special Project Grants in the statement of Financial Performance.

**2.12 Deferred Income**

Deferred Income consists of the Capital Grant received from the General Treasury in the year 2020 for capital expenditure. The Deferred Income is recognized as income on a systematic and

rational basis over the useful life time of the assets in case of capital grant and amortizes the deferred income set up for capital purchases.

### **2.13 Revenue Recognition**

Institute generates Revenue from the following sources, and recognizes such revenues for accounting purposes on the accruals basis.

- (a) Testing and Analytical Fees
- (b) Seminars and Work Shops
- (c) Sale of Publications
- (d) Sale of Tapping Knives
- (e) Sundry Receipts

### **2.14 Expenditure**

All expenditures are recognized on the accrual basis.

### **2.15 Adjustments made to the Cumulative Expenditure**

Adjustment of Rs. 790,401.85 has been made to the cumulative expenditure account.

## **3. Legal Matters**

Legal issues pertaining to matters of employees were pending at Courts as at 31st December 2020 are as follows.

	<b>Case No.</b>	<b>Court / Institution</b>	<b>Applicant</b>
01.	KT/18/517/216	Labour Court, Kalutara	Mr. L.P.K.W. Waliwatta

## **4. Consolidation Policies:**

- 4.1 The Rubber Research Board accounts comprise the consolidation of the activities of the R.R.I. Estates (plantations) managed by the Rubber Research Institute. i.e. Dartonfield Group & Kuruwita Estate.
- 4.2 The Rubber Research Institute and estates have a common financial year which ends on 31 December.
- 4.3 The profits and losses of the plantations have been taken in to the Rubber Research Institute surplus/deficit account and reflected in the balance sheet.

- 4.4 The project accounts have not been consolidated with the Rubber Research Institute accounts, since they are separate entities. However, the detail information of the projects have been shown separately and it has been reflected in the financial statements.

**5. Non-Current Assets:**

**5.1 Lands**

The Rubber Research Institute of Sri Lanka has ownership of all the lands except Galewatta, Kumarawatta (Monaragala) and Narampola (Alawwa).

**5.2 Substation at Narampola (Alawwa) Kumarawatta (Monaragala)**

**5.2.1 Narampola (Alawwa)**

The extent of this land is 106 Acres 02 Roods & 31 perches. This land was taken over on 14.12.2004 under MOU on a Rental agreement.

**5.2.2 Kumarawatta (Monaragala)**

The extent of the land is 50 acres and this was taken over from the JEDB on 19 September 2006 under MOU on 30 years Lease agreement.

The cabinet approval has been obtained to acquire these Lands and the ownership will be transferred by the Ministry of Plantation Industries (MPI) to RRB after completion of legal requirements with land Reform commission (LRC) and Janatha Estate Development Board (JEDB).

**5.2.3 Profit and Loss - Narampola (Alawwa), Kumarawatta (Monaragala) Substations**

- (i) Narampola substation is established for the purpose of research and extension activities and it is still in developing stage.
- (ii) Kumarawatta (Monaragala) Substation has been established for Research and extension activities related to non-traditional Rubber growing areas including Northern and Eastern Provisions. RRI can't expect a profit from the

substation as it is a small Land for research activities and cultivation.

**6. Current Assets**

**6.1 Debtors & Other Receipts**

The Surety Bond Debtors balance as at 31.12.2020 is Rs. **3,509,706.50** which has made up as follows.

Mr. H.H.Talgaswatta	-	38,402.56
Mr. S.M.C.E.Silva	-	1,635,005.85
Mr. Nalinda P Wickramasinghe	-	10,643.54
Mr. B.P.Weerathna	-	<u>1,825,654.55</u>
Total		<b><u>3,509,706.50</u></b>

**7. Research & Development Expenditure:**

Research and development expenditure have been charged to departmental expenditure for the relevant period.

**8. New planting /replanting /crop diversification expenditure**

The above categories of expenditure have been capitalized in the accounts and depreciation will be made on maturity.

**9. Categorizing Expenditure against Budget Format.**

Laboratory Working expenses and Field Working expenses have been shown under Research and Development Expenditure in the Statement of Financial Performance. In the Budget Format, Laboratory working expenses and Field working expenses have been shown under Supplies and services respectively.

Other Operating Expenses are the value of services rendered from the estates (Dartonfield and Kuruwita) to the Rubber Research Institute except Rent for Narampola and Kumarawatta. These expenses are charged to the Rubber Research Institute from the Monthly accounts of Dartonfield and Kuruwita Estates. Labour Charges related to Institute activities have been charged to the relevant department expenditure votes.

**RUBBER RESEARCH BOARD OF SRI LANKA**  
**NOTES TO THE STATEMENT OF FINANCIAL POSITION AS AT 31ST DECEMBER 2020**

**NOTE 01 - LAND & BUILDINGS**

ASSETS	Cost as at 01.01.2020 Rs.	Additional / correction during the year 2020 Rs.	Vehicles Sales Rubber Came into Tapping Rs.	Total as at 31/12/2020 Rs.	Accumulative Depreciation as at 01.01.2020 Rs.	Depreciation for the year 2020 Rs.	Depreciation for the Disposal	Accumulated Depreciation as at 31/12/2020 Rs.	Written down value as at 31/12/2020 Rs.
Road Development Df.	18,446,176.81			18,446,176.81	2,123,107.91	1,844,617.68		3,967,725.59	14,478,451.22
Land - Df.	1,010,704.74			1,010,704.74	-	-		-	1,010,704.74
- N'kele	357,805.89			357,805.89	-	-		-	357,805.89
- Galewatta	1,865,476.48			1,865,476.48	-	-		-	1,865,476.48
- Kuruwita	732,681.96			732,681.96	-	-		-	732,681.96
- Rathmalana	270,760.81			270,760.81	-	-		-	270,760.81
- Df. Estate	-			-	-	-		-	-
Capital Ex. Land productivity improvement in existing rubber cultiva Note 26	-			-	-	-		-	-
Lease Land - Alawwa (55 years lease)	662,365.75			662,365.75	-	-		-	662,365.75
- Monaragala (99 years)	106,650.00			106,650.00	-	-		-	106,650.00
Buildings - Df. H.Q	104,458,789.11	4,510,018.67		108,968,807.78	12,022,974.92	2,648,438.92		14,671,413.84	94,297,393.94
- Auditorium	33,848,323.04			33,848,323.04	5,774,882.02	846,208.08		6,621,090.10	27,227,232.94
- Df. Estate	13,154,310.30	1,544,249.50		14,698,559.80	1,199,313.63	328,857.76		1,528,171.39	13,170,388.41
- N'kele	4,988,669.51	821,795.07		5,810,464.58	998,698.04	138,473.36		1,137,171.40	4,673,293.18
- Galewatta	846,682.19			846,682.19	193,471.77	21,167.05		1,134,638.83	632,043.36
- Kuruwita	7,355,170.94			7,355,170.94	1,320,123.74	183,879.27		1,504,003.01	5,851,167.93
- Rathmalana	50,316,770.38	6,341,901.28		56,658,671.66	6,251,096.63	1,227,394.10		7,478,490.72	49,180,180.94
- Alawwa	1,302,848.78			1,302,848.78	333,509.84	32,571.22		366,081.06	936,767.72
- Monaragala	14,999,115.52			14,999,115.52	3,766,048.78	374,977.89		4,141,026.67	10,858,088.85
Upgrading telecommunication	6,947,475.25	196,138.37		7,143,613.62	317,105.90	173,686.88		490,792.79	6,652,820.83
<b>Intangible Assets</b>									
Software	28,427,332.93	1,573,869.48		30,001,202.41	6,354,494.67	5,847,840.30		12,202,334.97	17,798,867.44
Solar Pannel - Df Estate	12,695,629.92			12,695,629.92	710,445.53	2,539,125.98		3,249,571.51	9,446,058.41
CCTV Camera	5,297,282.79	1,307,500.01		6,604,782.80	382,936.61	1,083,185.60		1,466,122.21	5,138,660.59
Surge Protection Device	4,799,742.00	572,400.00		5,372,142.00	927,433.29	1,034,720.51		1,962,153.80	3,409,988.20
<b>Infrastructure, Plant and equipment</b>									
Machinery & Tools - Df.	20,031,510.02	365,200.04	160,512.00	20,236,198.06	492,632.10	2,510,744.12	20,064.01	2,983,312.22	17,252,885.84
- N'kele	298,260.00	80,626.50	1,630.00	377,256.50	37,282.50	42,337.95	203.75	79,416.70	297,839.80
- Df. Estate	1,825,645.00	3,117,660.97	28,960.00	4,914,345.97	63,943.76	224,585.63	3,620.00	284,909.38	4,629,436.59
- Kuruwita	1,429,471.43	3,150.00	16,800.00	1,415,821.43	174,235.67	176,715.54	2,100.00	348,851.21	1,066,970.22
- Rathmalana	4,452,724.80		27,700.00	4,425,024.80	471,439.60	553,128.10	3,462.50	1,021,105.20	3,403,919.60
- Alawwa	207,500.00	112,500.00	11,450.00	308,550.00	25,937.50	38,568.75	1,431.25	63,075.00	245,475.00
Laboratory Equipments - Df.	72,287,285.98	11,561,377.32	1,410,655.00	82,438,008.30	12,788,590.35	16,259,176.88	282,131.00	28,765,636.23	53,672,372.07
- Rathmalana	57,587,116.04	44,040,586.00	772,925.00	100,854,777.04	11,464,750.07	13,691,498.86	154,585.00	25,001,663.93	75,853,113.11
- N'kele	8,571,454.00		170,310.00	8,401,144.00	1,708,342.67	1,680,228.80	34,062.00	3,354,509.47	5,046,634.53
Audio Visual Equipment	7,080,474.50	1,225,080.08	22,700.00	8,282,854.58	1,368,905.34	1,623,069.41	4,540.00	2,987,434.75	5,295,419.83
Effluent Treatment Plant	9,422,910.68			9,422,910.68	1,995,966.91	376,916.43		2,372,883.34	7,050,027.34
Motor vehicles - H.Q	58,592,969.00			58,592,969.00	11,718,593.80	11,718,593.80		23,437,187.60	35,155,781.40
- Df. Estate	2,210,205.00			2,210,205.00	441,100.76	442,041.00		883,141.76	1,327,063.24
- Kuruwita	900,000.00	111,500.00		1,011,500.00	180,000.00	199,795.07		379,795.07	631,704.93
- N'kele	4,750,000.00			4,750,000.00	950,000.00	950,000.00		1,900,000.00	2,850,000.00
- Rathmalana	30,965,000.00			30,965,000.00	6,193,000.00	6,193,000.00		12,386,000.00	18,579,000.00
Power & Water Supply - Df.	4,334,255.92	146,514.00		4,480,769.92	1,341,430.62	447,555.16		1,788,985.78	2,691,784.14

**NOTE 01 - LAND & BUILDINGS**

ASSETS	Cost as at 01.01.2020 Rs.	Additional / correction during the year 2020 Rs.	Vehicles Sales Rubber Came into Tapping Rs.	Total as at 31/12/2020 Rs.	Accumulative Depreciation as at 01.01.2020 Rs.	Depreciation for the year 2020 Rs.	Depreciation for the Disposal	Accumulated Depreciation as at 31/12/2020 Rs.	Written down value as at 31/12/2020 Rs.
- N'kela	132,038.73			132,038.73	41,225.24	13,203.87		54,429.11	77,609.62
- Kurua	228,831.39			228,831.39	150,417.17	22,883.14		173,300.31	55,531.08
- Rathu	461,908.00			461,908.00	290,405.17	46,190.80		336,595.97	125,312.03
- Monu	1,695,132.00			1,695,132.00	1,273,589.22	169,513.20		1,443,102.42	252,029.58
- Alaa	90,685.00			90,685.00	68,133.60	9,068.50		77,202.10	13,482.90
- Df. Estu	340,229.76			340,229.76	1,771.06	34,022.98		35,794.04	304,435.72
Furniture & Fixtures & Office Equipment	52,308,222.15	5,021,846.04	1,138,020.00	56,192,048.19	9,516,817.48	10,589,347.43	227,604.00	19,878,560.91	36,313,487.28
- N'kela	6,165,391.46	105,197.51	82,435.00	6,188,133.97	1,221,284.19	1,234,319.21	16,887.00	2,439,116.40	3,749,007.57
- Kuruwit	2,581,145.00	148,120.00	68,335.00	2,660,930.00	516,229.00	513,020.65		1,015,582.65	1,645,347.35
- Rathmalana	11,601,258.27	3,360,570.77	213,480.00	14,748,349.04	2,245,180.92	2,735,276.42	42,696.00	4,937,761.35	9,810,587.69
(Vote No-01.07.06 +01.08.06) - Alaa	172,875.00	8,903.73	2,050.00	179,728.73	34,575.00	35,257.84	410.00	69,432.84	110,308.91
- Df. Estu	1,209,582.69	2,400.00	16,820.00	1,195,162.69	211,809.37	239,032.54	3,364.00	447,477.91	747,684.78
- Monu	1,248,250.00		18,200.00	1,230,050.00	249,650.00	246,010.00	3,640.00	492,020.00	738,030.00
Others Assets - Df. H.Q	2,301,351.09	334,954.80	14,170.00	2,622,135.89	134,776.31	237,812.38	1,817.00	370,871.69	2,251,264.20
- Df. Estate	26,490,990.00	13,900.00	122,800.00	26,382,090.00	2,643,470.51	2,637,875.07	12,280.00	5,269,065.58	21,113,024.42
- Rathmalana	1,173,807.77	17,161.11	1,650.00	1,189,318.88	28,505.21	117,832.12	165.00	146,172.34	1,043,146.54
- N'kela	82,277.14	40,575.00	460.00	122,352.14	8,136.53	8,294.08	46.00	16,384.61	106,007.53
- Kuruwita	67,000.00	142,640.00		209,640.00	6,581.64	9,940.68		16,522.32	193,117.68
- Alawwa	166,133.33		1,000.00	165,133.33	13,564.02	16,513.33	100.00	29,977.35	135,155.98
- Monaragala	491,784.51	505,424.00	17,670.00	979,538.61	46,561.51	48,828.84	1,846.75	93,543.60	885,995.01
Library Periodicals Journals & Sub etc.	5,169,816.25	175,234.00		5,345,050.25		1,045,433.23		1,045,433.23	4,299,617.02
Rubber Replanting Df & K'wita	36,053,853.18	32,940,000.31		68,993,853.49	23,681,650.00	1,184,082.50		1,184,082.50	68,993,853.49
Rubber in bearing Df & k'wita	23,681,650.00			23,681,650.00	185,129.59			185,129.59	22,497,567.50
Tea Replanting K'wita	3,723,591.87			3,723,591.87	1,686,757.16	35,871.87		1,650,885.29	3,536,462.28
Replanting Cinnamon K'wita & Df	717,437.39	969,319.77		1,686,757.16				35,871.87	1,650,885.29
Replanting Pepper	106,848.01			106,848.01					106,848.01
Earth Slip Project	139,543.33			139,543.33	62,238.75	5,581.73		67,820.48	71,722.82
Documentary Film	3,723.33			3,723.33				3,723.33	
<b>Total</b>	<b>776,441,904.19</b>	<b>121,418,284.35</b>	<b>4,320,732.00</b>	<b>893,539,456.54</b>	<b>112,860,440.18</b>	<b>96,874,142.09</b>	<b>829,922.26</b>	<b>208,904,660.01</b>	<b>684,634,796.53</b>
2020.01.01 Accumulated Depreciation	=	112,860,440.18			2020 Total Depreciation	=		=	96,874,142.09
2020 year Depreciation	=	96,874,142.09			2020 Replanting Depreciation	=		=	1,406,083.96
Disposal of Assets	=	(829,922.26)			Transfer to the Estate A/C	=		=	
		<b>Rs. 208,904,660.01</b>						<b>Rs. 95,468,058.13</b>	

**NOTE (02 ) OTHER FINANCIAL ASSETS****NOTE 2B -I KURUWITA**

Description	Rs. 2020	Rs. 2019
Young Budding Nursery 2013	258,718.26	-
2007 BUD Wood Nursery - KW	1,781.41	
Bud Wood Nursery 2011	36,795.39	36,795.39
2014 Young Bud wood Nursery	29,208.23	29,208.23
2007 BUD Wood Nursery		1,781.41
Cinnamon Nursery	247,608.23	247,608.23
Replanting Cinnaman - Kuruwita		
Replanting Rubber - Kuruwita		
Replanting Expenditure - Kuruwita	22,546.26	
<b>Sub Total</b>	<b>596,657.78</b>	<b>315,393.26</b>

**NOTE 2B -II DARTONFIELD ESTATE**

Description	Rs. 2020	Rs. 2019
Pineapple Trial -DF	12,397.50	
G/W Young Budding Nursery 2014/2015		
2018 Young Budding NS		
Banana Trails - DF	43,117.50	
SOR-Rubber Replanting Expenditure		8,016,824.18
Paper Trails - DF	24,795.00	
Budwood Nursery NK		
Budwood Nursery - GW	94,040.20	94,040.20
Cinnamon Nursery	788,265.04	
2013-2014 Young Budding Nursery		258,718.26
DF - Tea Green leaf Expenditure	12,000.00	
<b>Sub Total</b>	<b>974,615.24</b>	<b>8,369,582.64</b>
<b>Grand Total</b>	<b>1,571,273.02</b>	<b>8,684,975.90</b>



**Note 03**  
**OTHER CURRENT ASSETS**

Description	Schedule No.	RRI		K'wita Estate		Df. Estate		Total	
		Rs		Rs		Rs		Rs	
		2020	2019	2020	2019	2020	2019	2020	2019
Deposits	Schedule 04	709,539.57	754,944.57					709,539.57	754,944.57
Other Debtors	Schedule 05	1,286,278.99	1,286,278.99					1,286,278.99	1,286,278.99
General Debtors	433,136.69							-	-
		433,136.69	566,224.71					433,136.69	566,224.71
Debtors		157,278.90	4,752,954.70					157,278.90	4,752,954.70
Loan Receivable		4,818,808.92	4,722,437.14					4,818,808.92	4,722,437.14
Trade & Other Receivables	Schedule 07			6,197,214.93	1,036,439.37			6,197,214.93	1,036,439.37
Trade & Other Receivables	Schedule 07					12,780,679.88	10,231,366.60	12,780,679.88	10,231,366.60
Good In Transite A/C			824,676.82					-	824,676.82
Debtor's Clearance A/C		14,921,778.14	23,173,704.39					14,921,778.14	23,173,704.39
Less : Provision for bond debtors (Schedule 06)		(16,221,279.86)	(23,195,188.11)					(16,221,279.86)	(23,195,188.11)
<b>(Inter Transaction A/C)</b>								-	-
Control A/C - DF & RRISL		7,496,941.09				(7,496,941.09)		-	-
Control A/C - DF & RRISL				1,687,564.12		(1,525,604.32)		161,959.80	
Control A/C - KW & RRISL C		(376,581.75)		376,581.75				-	-
Control A/C - KW & RRISL NC		2,859,553.29		(2,859,553.29)				-	-
Control A/C - DF & RRISL C		(98,822.25)				98,822.25		-	-
		<b>15,986,631.73</b>	<b>12,886,033.21</b>	<b>5,401,807.51</b>	<b>1,036,439.37</b>	<b>3,856,956.72</b>	<b>10,231,366.60</b>	<b>25,245,395.96</b>	<b>24,153,839.18</b>

**Note 04****INVENTORIES/STOCKS**

<b>Location</b>	<b>Schedule No.</b>	<b>2020</b>	<b>2019</b>
		<b>Rs.</b>	<b>Rs.</b>
RRI	Schedule 01	17,271,802.72	15,758,064.97
K'wita Estate	Schedule 02	199,528.29	351,520.23
Df Estate	Schedule 03	769,215.54	1,310,008.04
<b>Total</b>		<b>18,240,546.55</b>	<b>17,419,593.24</b>

**Note - 04 A****WORKING PROGRESS**

Description	2020
	Rs.
Extension to DDRT Officer	118,111.18
Fixing Doors, Windows and Partition	1,118,311.50
Electrical Installation	343,228.77
Remodeling of Biochemistry dept	1,424,972.26
Hume pipe place & Interlock at Sport Club	255,310.30
Work Section Building 2	6,668,959.91
Renovation Works of ASD Field Office, Kiriella	316,659.00
Repair of Masons 100 kVA Generator	269,384.00
Renovation of Phase 2 and Construction of Store room	4,299,419.63
Renovation of Plant Pathology Laboratory & Plant House	948,260.45
Electrical Installation for Factory	709,878.69
Drain Repairing	54,611.00
BL - DF - Headqts	12,930,189.49
BL - RT - Office Lab	718,893.50
Developing Model Estate	3,926,800.09
White Root Desiases	1,006,946.25
LIH	6,135,059.95
<b>Total</b>	<b>41,244,995.97</b>

**NOTE 05 - RECEIVABLES**

Description	2020 Rs.	2019 Rs.
RDD / ASD / RRI Control A/C.	-	316,121.70
RDD		
Festival Advance		104,216.70
Travelling Advance	115,100.00	228,500.00
A.S.D.Building Complex	5,214,500.00	5,214,500.00
Special Salary Advance	4,400.00	4,400.00
Security Deposits	32,150.00	32,150.00
E T F		35,081.56
Insurance		(229,936.93)
Pre Payments T.Premaratne,Suranga Motors Ampara	150,000.00	150,000.00
Cheques and Cash Purchase Advance		220,704.24
Mobilization Advance & On Account Payment	890,809.51	19,028,570.64
Supplier and cash Advance A/C		
Receivable A/c 03.51.06	3,335.00	5,380.29
Cash Advance Payment - DF	1,245.00	4,009.71
Cash Advance-Kuruwita Estate	230.00	
Festival Advance Loan	107,966.70	
General Advance Payment (GAP)	415,868.00	
Samaranayake & Samaranayake-ARC	117,285.50	
On Account Payment		
Staff Advance Receivable	4,974.37	
<b>Total</b>	<b>7,057,864.08</b>	<b>25,113,697.91</b>

**Note - 06****INVESTMENT**

Description	2020	2019
	Rs.	Rs.
Bank Of Ceylon Agalawatta C/29 200835	200,000.00	200,000.00
National Savings Bank-City Branch A/C No.1-0002-04-5806-06	357,215.83	357,215.83
National Savings Bank-Matugama FD No.2-0045-01-58658	1,857.20	1,690.97
<b>Total</b>	<b>559,073.03</b>	<b>558,906.80</b>

**Note -07 CASH AT BANK AND IN HAND**

	<b>Cash at Bank</b>	<b>Cash in Hand</b>	<b>2020 TOTAL Rs.</b>	<b>2019 TOTAL Rs.</b>
Bank of Ceylon - Cor.Branch A/C No.1837	73,758,866.18	-	73,758,866.18	36,676,147.36
Bank of Ceylon - Agalawatta A/C No.335976	6,032,385.89	0.00	6,032,385.89	11,705,108.20
Bank of Ceylon - Agalawatta	6,035,737.27	-	6,035,737.27	5,836,674.19
Dartonfield Estate A/C No.335978	3,224,282.33	-	3,224,282.33	1,915,432.91
Kuruwita Estate A/C No.4320540	2,858,219.31	-	2,858,219.31	753,297.18
Fuel Coupons Imprest	219,500.00	-	219,500.00	197,500.00
<b>Total</b>	<b>92,128,990.98</b>	<b>-</b>	<b>92,128,990.98</b>	<b>57,084,159.84</b>

**Note 08****Payables**

Description	Schedul No.	RRI		K'wita Estate		Df. Estate		Total	
		Rs.		Rs.		Rs.		Rs.	
		<u>2020</u>	<u>2019</u>	<u>2020</u>	<u>2019</u>	<u>2020</u>	<u>2019</u>	<u>2020</u>	<u>2019</u>
Creditors	Schedule 08	14,642,933.34	23,119,624.07					14,642,933.34	23,119,624.07
Payables	Schedule 08, 09, 10	4,632,854.39	7,005,330.05	2,965,278.06	3,579,631.60	11,520,204.02	10,856,294.57	19,118,336.47	21,441,256.22
				(Schedule 09)	(Schedule 09)	(Schedule 10)	(Schedule 10)		
Accrued Expenses	Schedule 11	24,755,685.83	50,012,561.76			-		24,755,685.83	50,012,561.76
<b>Total</b>		<b>44,031,473.56</b>	<b>80,137,515.88</b>	<b>2,965,278.06</b>	<b>3,579,631.60</b>	<b>11,520,204.02</b>	<b>10,856,294.57</b>	<b>58,516,955.64</b>	<b>94,573,442.05</b>

### PROVISION FOR AUDIT FEE

**Note - 09**

<b>Description</b>	<b>2020</b>	<b>2019</b>
	<b>Rs.</b>	<b>Rs.</b>
Beyond 2019.01.01	0.00	-
Provision for 2019	2,589,553.96	3,182,598.05
<b>Total</b>	<b>2,589,553.96</b>	<b>3,182,598.05</b>

### PROVISION FOR GRATUITY

**Note - 10**

<b>Description</b>	<b>2020</b>	<b>2019</b>
	<b>Rs.</b>	<b>Rs.</b>
RRI	124,713,976.00	114,210,233.50
Kuruwita	6,771,800.00	6,379,800.00
Dartonfield	17,180,870.00	20,342,700.00
Provision for Gratuity Polgahawela	980,000.00	950,600.00
Provision for Gratuity Monaragala	1,607,200.00	1,430,800.00
<b>Total</b>	<b>151,253,846.00</b>	<b>143,314,133.50</b>

**Note - 11**

Description	Schedul No.	2020	2019
		Rs.	Rs.
Accumulated Fund	Schedule 12	45,044,234.46	45,044,234.46
Other Capital Grants		327,499,600.49	294,377,422.20
Treasury Grants Capital		735,069,762.28	623,369,762.28
Treasury Grants for Special Capital Projects		(137,013,160.48)	(42,775,418.12)
Treasury Grants -R & D expenditures for special capital projects			
Treasury Grants Cess		79,828,035.40	79,828,035.40
Plantation Crop Development Fund		6,300,000.00	6,300,000.00
<b>Total</b>			<b>1,056,728,472.15</b>

**Note 12**

Description	2020	2019
	Rs.	Rs.
Accumulated Surpluses / (Deficits)	(584,681,074.55)	(529,734,727.96)
Prior Year adjustment	790,401.85	(1,155,670.28)
	(583,890,672.70)	(530,890,398.24)
Deficit 2020 year	10,858,981.63	(53,790,676.31)
Disposal of Assets Surpluses / (Deficits)	(96,878.52)	-
<b>Total</b>	<b>(573,128,569.59)</b>	<b>(584,681,074.55)</b>



**Note-13 - OTHER INCOME - 2020**

DESCRIPTION	TOTAL RS.	
	2020 Rs.	2019 Rs.
Interest On Institute Loans	154,873.98	153,277.57
Sales Of Publication	363,660.00	85,600.00
Bus fare Recoveries	332,713.74	288,742.00
Sundry Receipts	2,378,680.59	1,676,307.35
Analytical Charges & Other Testing Charg	7,776.00	-
Effluent Treatment- B/C Dept.	37,050.00	86,650.00
Solar Income	2,506,086.00	-
Testing of Rubber - Rubber Technology	179,905.00	206,965.00
Testing of Rubber - RRP Dept.	316,100.00	249,100.00
Kuruwita Guest House Occupational Charges	2,800.00	2,750.00
Sale of Rejected Items	202,100.00	49,502.00
Soil & Foliar analysis Fee	153,315.20	274,118.30
Interest on Investments	227,263.41	430,189.41
Sale of Tapping Knives	-	-
Use of RRI Vehicles for Projects	-	297,681.26
Profit on Training Programmes	377,187.25	305,186.00
Guest House Income	35,139.00	48,040.00
Soil Foliar Survey	490,074.40	694,783.80
Waste Rubber of RRI Depts. Sold	-	-
Tapping Panel Making plants sale	23,900.00	100,375.00
Testing T.S.R.Samples	1,642,250.00	1,224,212.00
Testing and Analytical Fees Polymer Chemistry	482,050.00	576,250.00
Insurance claims Received Factory Fire	-	-
Auditorium Income	50,000.00	41,606.00
RRI Internal Timber Used	-	-
Sale of Bud wood Stumps	250	500.00
Claims Received from Insurance Corporation	-	-
Registration Suppliers	69,150.00	-
Testing fee Plant Pathology	-	-
Testing Fees - Plant Patho	-	-
Testing Fees - Plant Science	-	2,500.00
I.R.R.D.B.- Income	-	-
Other Sales	-	630,066.23
Symposium Registration Fees	590,000.00	7,720,200.00
Testing Of soil Samples	-	42,575.00
Sales	274,600.95	-
<b>Total</b>	<b>10,896,925.52</b>	<b>15,187,176.92</b>

**Note -14 PERSONAL EMOLUMENTS**

**EXPENDITURE STATEMENT - 2020**

Research Departments	Emoluments	P.F.	E.T.F.	Medical Fund	Over Time	House Rent	Transport Allowance	Fuel Allowance	Total Rs.
Plant Science	17,646,129.18	2,440,278.83	488,055.76	3,115,025.54	268,688.51	69,060.00	600,000.00	197,280.00	24,824,517.82
Plant Pathology	9,424,425.01	1,330,052.61	266,010.52	1,641,929.89	315,808.74	55,258.71	600,000.00	197,280.00	13,830,765.48
Genetics & Plant Breeding	14,791,672.19	2,097,932.93	407,270.32	2,756,572.88	866,046.10	51,270.97	600,000.00	197,280.00	21,768,045.39
Soils & Plant Nutrition	12,374,018.32	1,774,804.86	354,960.96	1,882,251.76	112,873.41	53,810.00	600,000.00	197,280.00	17,349,999.31
Raw Rubber & Chemical Analysis	7,953,370.67	1,193,297.74	225,345.39	1,011,304.28	36,326.62	48,590.00			10,468,234.70
Bio-Chemistry & Physiology	6,416,646.97	850,704.44	170,140.87	1,113,814.57		18,800.00	600,000.00	197,280.00	9,367,386.85
Adaptive Research Unit	4,831,171.21	682,451.15	136,490.22	824,837.00			600,000.00	197,280.00	7,272,229.58
Rubber Technology	9,598,015.37	1,299,294.84	259,858.94	933,631.21	91,982.20	69,909.33	550,000.00	180,840.00	12,983,531.89
RRPD & CE Dept	6,480,742.71	1,036,434.63	184,220.52	1,071,555.85	149,872.14	45,999.03	50,000.00	16,440.00	9,035,264.88
Bio Metry	5,270,135.53	685,459.00	137,091.80	500,524.57	120,281.19	23,001.33	600,000.00	197,280.00	7,533,773.42
RRI New Advisory Services Det	20,144,437.31	3,162,513.65	553,544.91	3,320,460.29	3,354.00	237,805.20	562,903.23	140,500.65	28,125,519.24
Training Center	1,071,119.90	147,448.79	29,489.76	177,964.76	25,504.82	2,280.00			1,453,808.03
Polymer Chemistry	6,319,292.25	873,405.25	174,681.05	1,314,019.30	12,567.97	41,950.00			8,735,915.82
Agriculture Economics	2,378,121.95	246,718.18	49,343.63	320,007.67	32,133.22	26,280.00			3,052,604.65
<b>SUB TOTAL</b>	<b>124,699,298.57</b>	<b>17,820,796.90</b>	<b>3,436,504.65</b>	<b>19,983,899.57</b>	<b>2,035,438.92</b>	<b>744,014.57</b>	<b>5,362,903.23</b>	<b>1,718,740.65</b>	<b>175,801,597.06</b>
<b>Other Departments</b>									
Library & Publication Unit	3,296,720.47	489,024.82	97,804.97	801,494.55	213,614.74	15,840.00			4,914,499.55
Director's Office	7,887,324.08	800,124.30	160,024.86	629,262.44		6,720.00	1,450,000.00	738,719.55	11,672,175.23
Internal Audit	2,068,225.18	268,779.78	53,755.96	400,899.80	35,469.08	14,280.00			2,841,409.80
Board Office	3,530,420.72	483,086.01	59,152.89	347,364.15	36,876.98	15,022.84			4,471,923.59
Administration	27,429,563.33	3,838,919.58	728,564.19	5,175,551.60	2,049,896.89	153,004.58			39,375,500.17
Finance (Accounts)	13,428,612.10	1,896,282.95	357,344.66	2,712,872.73	827,505.94	56,007.20	600,000.00	261,644.44	20,140,270.02
Stores	1,933,044.48	279,283.34	55,856.66	439,871.40	77,120.38	16,220.00			2,801,396.26
Maintenance (Work Section)	29,870,045.99	4,443,850.55	863,776.13	6,611,949.20	3,262,879.70	143,665.32			45,196,166.89
PP&MD-Audio Visual Unit -Em	1,359,685.79								1,359,685.79
<b>SUB TOTAL</b>	<b>90,803,642.14</b>	<b>12,499,351.33</b>	<b>2,376,280.32</b>	<b>17,119,265.87</b>	<b>6,503,363.71</b>	<b>420,759.94</b>	<b>2,050,000.00</b>	<b>1,000,363.99</b>	<b>132,773,027.30</b>
<b>Grand total</b>	<b>215,502,940.71</b>	<b>30,320,148.23</b>	<b>5,812,784.97</b>	<b>37,103,165.44</b>	<b>8,538,802.63</b>	<b>1,164,774.51</b>	<b>7,412,903.23</b>	<b>2,719,104.64</b>	<b>308,574,624.36</b>
									<b>(10,233.43)</b>
									<b>308,564,390.93</b>

Less : Computer Difference

**DARTONFIELD ESTATE EXPENDITURE**

Note 14A

<b>Wages, Salaries &amp; Employee Benefits</b>	<b>2020</b>		<b>2019</b>	
Salaries & Wages etc	7,820,422.19		7,679,989.39	
EPF	4,694,523.08		5,938,143.83	
ETF	1,122,220.32		1,505,301.12	
Medical	1,346,749.08		1,260,558.35	
L/Wages	26,676,285.50		20,233,519.09	
Holiday pay	3,848,323.84		3,270,210.21	
Attendance Bounds	124,100.00		125,850.00	
Paid Holiday				
<b>Total</b>		<b>45,632,624.01</b>		<b>40,013,571.99</b>
<b>Supplies &amp; Consumables Used</b>				
Tools	-		36,709.00	
Rain Guard	2,150,717.10		2,287,682.36	
Stimulation	-		59,202.00	
Tapping Utensils	-		85,250.00	
Chemicals	-		352,810.51	
packing Materials	172,600.15		1,166.00	
<b>Total</b>		<b>2,323,317.25</b>		<b>2,822,819.87</b>
<b>Depreciation &amp; Amortization Expenses</b>				
Fixed Assets	3,906,414.96		(3,459,993.02)	
Repenting	1,107,520.58		1,219,659.64	
<b>Total</b>		<b>5,013,935.54</b>		<b>(2,240,333.38)</b>
<b>Maintenance of Property, Plant &amp; Equipment</b>				
Supervisory Vehicle	-		303,522.48	
Stationery & Communication	296,514.08		766,289.22	
Bungalows	27,145.00		713,278.35	
Lines	36,689.07		132,062.83	
Miner Building Up-Keep	138,033.68		23,944.35	
Weeding	1,396,391.23		1,871,726.62	
Marking	-		201,923.76	
Tapping Panel Treatment	-		9,900.00	
Latex ( Transports )	-		477,401.38	
Fuel	269,135.50		292,928.93	
Factory Up-Keep	-		38,207.92	
Machinery Up-keep	14,147.19		60,251.70	
Factory Sundries	98,351.33		42,456.70	
Transport of Produce	119,356.25		182,755.95	
Cleaning -DF Estate	178,494.00		-	
Effluent Tank - DF	17,866.92		-	
Repair & Maintenance of Office Equipment	1,800.00		-	
Vehicle Maintenance - DF	97,034.34		-	
Production Expenses	1,051,830.48		-	
<b>Total</b>		<b>3,742,789.07</b>		<b>5,116,650.19</b>
<b>Other Expenses</b>				
Contingencies				
Welfare & Sports	167,035.00		57,933.81	
Audit Fee	243,387.99		211,641.73	
DE-Sanitations – Cost of sweepers Eel Co	-		428,995.69	
Electricity - Estate	121,135.59		-	
Field Work & Cultivation Ex -DF	1,221,263.58		-	
Miscellaneous Expenses -DF	138,563.29		-	
Newspaper -DF Estate	157,295.00		-	
Plucking - DF	847,325.88		-	
Postage Charges - DF	5,802.00		-	
Traveling - DF	30,406.25		-	
Water Supply Expenses -DF Estate	7,000.00		-	
Stationery And Printing Charges - DF	163,720.54		-	
Telephone -DF	40,067.95		-	
Other Expenses	3,240.00		1,073,759.32	
<b>Total</b>		<b>3,146,243.07</b>		<b>1,772,330.55</b>
<b>Finance Costs</b>				
Legal	90			
Commission Cash Transport/Insurance	387,877.96		471,575.06	
Rates & Tax	8,516.57		-	
Insurance	144,111.57		5692.98	
Bank Charges - DF estate	43,050.00		-	
<b>Total</b>		<b>583,645.90</b>		<b>477,268.04</b>
<b>Total Revenue expenditure</b>		<b>60,442,554.84</b>		<b>47,962,307.26</b>

**KURUWITA SUB STATION**

**Note 14 B**

**Wages, Salaries & Employee Benefits**

Description	2020 Rs.	2019 Rs.	
Emolument	4,192,533.78	3,101,283.93	
EPF	1,868,797.91	1,557,568.44	
ETF	447,009.58	389,392.11	
Medical	623,933.92	584,105.64	
L/Wages - Tapping/other sundries	12,208,431.50	12,657,337.96	
Overtime pay / Holiday pay	886,426.71	1,072,880.91	
Attendance bonus	43,053.67	45,012.50	
<b>Total</b>			19,407,581.49
<b>Supplies &amp; Consumables Used</b>			
Tools	-	11,450.40	
Rainguard	-	999,951.62	
Stimulation	-	51,464.65	
Tapping Utensils	-	61,335.00	
Production Expenses	310,755.09	-	
Rainguard Expenditure	611,761.49	-	
Fuel	239,239.00	-	
Packing Materials	9,963.00	17,920.00	
Chemical etc	-	287,587.06	
Tapping Exp	23,025.00	-	
<b>Total</b>			1,429,708.73
<b>Depreciation</b>			
Fixed Assets	1,106,234.35	(1,061,368.25)	
Replanting	298,563.38	195,925.89	
<b>Total</b>			(865,442.36)
<b>Maintenance of Property, Plants &amp; Equipment</b>			
Supervisory Vehicle	-	693,378.58	
Stationery & Communication	8,980.00	730,883.69	
Bungalows	3,975.00	198,913.79	
Lines	-	192,770.87	
Minor Building upkeep	67,826.00	139,042.49	
Weeding	1,157,719.57	733,910.35	
Marking	-	86,500.38	
Tapping panel treatment	-	34,720.00	
Latex transport	-	54,405.00	
Fuel	-	99,899.39	
Repair & Maintenance of Office Equipment	27,680.00	-	
Vehicle Maintenance	31,070.00	-	
Machinery upkeep	41,208.00	60,685.19	
Factory Expences	1,264,089.38	49,637.29	
Transport of Produce	-	79,136.51	
<b>Total</b>			3,153,883.53
<b>Other Expenses</b>			
Contingencies	-	87,037.51	
Welfare	43,614.00	24,440.00	
Audit fee	75,548.07	65,693.97	
Advertisement	11,016.00	-	
Electricity	321,191.59	-	
Field Work And Cultivation Expences	174,224.00	-	
Labour Grativity Exp	548,800.00	-	
Land Maintenances	145,722.00	-	
Miscellaneous Expences	67,254.00	-	
News Papers	7,920.00	-	
Postage	1,500.00	-	
Telephone	48,250.67	-	
Transport Expences	327,269.00	-	
Travelling	32,595.00	-	
Water Supply Expences	25,571.00	-	
Other Expenses	-	139,945.03	
<b>Total</b>			317,116.51
<b>Finance Costs</b>			
Legal	31,428.00	-	
Commission on Cash	131,556.82	124,080.39	
Bank Charges - Kuruwita	4,000.00	-	
Insurance	41,041.42	52,259.19	
<b>Total</b>			176,339.58
<b>Grand Total</b>			<b>23,619,187.48</b>
		<b>27,510,777.90</b>	
			<b>208,026.24</b>

**MONARAGALA SUB STATION**

**Note 14 C**

Description	2020		2019	
	Rs.		Rs.	
Emolument	5,864,432.06	6,772,664.02	5,028,962.16	5,973,214.54
EPF	793,497.81		828,196.98	
ETF	114,734.15		116,055.40	
Supplies & Other Consumables used	602,651.57	722,620.57	220,198.11	1,086,223.62
Other Expenses	119,969.00		866,025.51	
<b>Total</b>		<b>7,495,284.59</b>		<b>7,059,438.16</b>

**POLGAHAWELA SUB STATION**

**Note 14 C**

	2020		2019	
	Rs.		Rs.	
Emolument	4,041,069.94	4,515,760.69		-
EPF	379,752.60			
ETF	94,938.15			
Supplies & Other Consumables used	969,368.72	1,040,468.72	169,689.50	262,858.89
Other Expenses	71,100.00		93,169.39	
<b>Total</b>		<b>5,556,229.41</b>		<b>262,858.89</b>

**Note-15 - TRAVELLING**

Description	2020 Rs.	2019 Rs.
<b>RESEARCH DEPARTMENTS</b>	<b>Travelling &amp; Subsistence</b>	
Plant Science	725,384.00	1,296,489.00
Plant Pathology	162,352.00	497,554.00
Genetics & Plant Breeding	968,159.00	1,263,430.00
Soils & Plant Nutrition	410,158.00	537,290.00
Raw Rubber & Chemical Analysis	55,250.00	60,628.00
Bio-Chemistry & Physiology	62,292.00	-
Adaptive Research Unit	36,450.00	282,705.05
Rubber Technology	101,709.00	222,112.55
RRPD & CE Dept	245,335.27	343,814.11
Bio Metry	37,574.08	39,608.00
Polymer Chemistry	45,914.35	106,750.50
Agriculture Economics	3,500.00	24,000.00
<b>Sub Total</b>	<b>2,854,077.70</b>	<b>4,674,381.21</b>

OTHER DEPARTMENTS	2020 Rs.	2019 Rs.
Library & Publication Unit	13,750.00	32,875.00
Director's Office	104,560.00	144,931.00
Internal Audit	59,221.00	87,969.00
Board Office	43,165.00	55,685.00
Administration	339,877.68	477,516.53
Finance (Accounts)	168,469.00	222,560.00
Stores	52,600.00	68,400.00
Maintenance (Work Section)	1,979,597.50	2,906,417.00
RRI New Advisory Services Dept	1,443,908.28	2,109,423.80
Training Centre	7,498.00	8,494.00
<b>Sub Total</b>	<b>4,212,646.46</b>	<b>6,114,271.33</b>
<b>Grand Total</b>	<b>7,066,724.16</b>	<b>10,788,652.54</b>

**Note -16 - SUPPLIERS AND CONSUMABLES**  
**RESEARCH DEPARTMENTS** **OTHER EXPENSES**

Description	2020 Rs.	2019 Rs.
Plant Science	201,713.68	397,914.75
Plant Pathology	19,562.27	254,302.20
Genetics & Plant Breeding	19,799.43	260,617.21
Soils & Plant Nutrition	37,122.26	401,739.92
Raw Rubber & Chemical Analysis	195,050.05	1,128,695.21
Bio-Chemistry & Physiology	31,743.68	92,369.78
Adaptive Research Unit	62,604.50	248,245.29
Rubber Technology	85,134.15	45,170.47
RRPD & CE Dept	115,600.66	502,673.92
Bio Metry	15,194.96	15,807.94
Polymer Chemistry	256,005.77	522,810.28
Agriculture Economics		2,250.00
<b>SUB TOTAL</b>	<b>1,039,531.41</b>	<b>3,872,596.97</b>

**OTHER DEPARTMENTS**

Library & Publication Unit	46,820.54	53,414.53
Director's Office	35,361.05	56,057.13
Internal Audit	3,614.95	12,952.69
Board Office	54,208.86	448,244.90
Administration	396,393.50	2,880,277.48
Finance (Accounts)	16,567.50	21,685.56
Maintenance (Work Section)		
RRI New Advisory Services Dept	523,218.91	315,545.52
Training Centre	403,884.90	442,600.93
Stores	60,314.26	44,950.07
Electronic Repair Unit		
<b>SUB TOTAL</b>	<b>1,540,384.47</b>	<b>4,275,728.81</b>
L.P gas for Bungalows	395,583.70	409,430.27
Fuel & Lubricants	3,845,153.22	7,116,055.19
Stationery and Office Requisites	700,950.28	479,897.77
Medical Expenses	517,181.40	596,802.83
<b>SUB TOTAL</b>	<b>5,458,868.60</b>	<b>8,602,186.06</b>
<b>GRAND TOTAL</b>	<b>8,038,784.48</b>	<b>16,750,511.84</b>

**DEPRECIATION OF NON CURRENT ASSETS**

**Note-17**

<b>CATEGORY OF ASSETS</b>	<b>Percentage</b>	<b>Rs.</b>	
<b>Description</b>		<b>2020 Rs.</b>	<b>2019 Rs.</b>
Buildings	2.50%	5,801,967.65	4,314,463.24
Intangible Assets	20.00%	5,847,840.30	5,635,378.91
Furniture, Fittings & Office Equipment	20.00%	15,592,264.09	13,995,545.97
Power & Water Supply	10.00%	742,437.65	671,689.64
Machinery & Tools	12.50%	3,546,080.08	1,265,471.12
Lab Apparatus	20.00%	31,630,904.54	25,961,683.09
Motor Vehicles	20.00%	19,503,429.87	19,482,694.56
Library Books	20.00%	1,045,433.23	2,005,589.63
Documentary Film	12.50%		182.84
Earth Slip Project	4.00%	5,581.73	5,581.73
Other assets	10.00%	3,076,796.50	2,881,595.74
Upgrading telecommunication	2.50%	173,686.88	
Effluent Treatment Plant	4.00%	376,916.43	376,916.45
Audio Visual Equipment	20.00%	1,623,069.41	1,368,905.34
Road Development	10.00%	1,844,617.68	1,072,642.86
Solar Pannel - DF Estate	20.00%	2,539,125.98	710,445.53
CCTV Camera	20.00%	1,083,185.60	382,936.61
Surge Protection Device	20.00%	1,034,720.51	927,433.29
Rubber in bearing Df & k'wita	5.00%	1,184,082.50	1,147,987.35
Tea Replanting K'wita	5.00%	186,129.59	195,925.89
Replanting Cinnamon K'wita & Df	5.00%	35,871.87	71,672.29
<b>Total</b>		<b>96,874,142.09</b>	<b>82,474,742.10</b>
<b>Less:</b>			
Replanting Depriciations - DF		1,107,520.58	(1,415,585.53)
Replanting Depriciations - KW		298,563.38	
Dartonfield Estate - Depreciation		3,906,414.96	(3,459,993.02)
Kuruwita Estates - Depreciation		1,106,234.35	(1,061,368.25)
		<b>90,455,408.81</b>	<b>76,537,795.29</b>
<b>Less: Amortization</b>			-
		<b>90,455,408.81</b>	<b>76,537,795.29</b>



**Note-18 -****MAINTENANCE**

<b>Description</b>	<b>2020 Rs.</b>	<b>2019 Rs.</b>
Office & General Building Repair & Maintenance	3,992,071.25	947,291.70
Maintenance of Auditorium	12,533.70	110,589.40
Maintenance of Bungalows	2,006,579.73	5,787,185.13
Bungalow Premises & Compounds	-	2,861,133.06
Maintenance of Plant & Machinery	47,050.00	841,318.22
Furniture, Fixtures & Fittings	37,690.00	166,390.00
Institute General Building Premises & Compounds	4,561,823.13	-
RRI Ratmalana Building Premises Upkeep-Maintenance	7,927,137.13	10,732,589.28
Maintenance Tools	1,100.00	5,965.00
Maintenance of Computer (Note 32A)	1,658,546.16	3,592,509.82
Computer Network	719,869.68	465,343.50
BO-R.R.I Ratmalana Maintenance	40,175.00	90,911.00
BO-RRI Photocopier Maintenance	145,461.72	350,772.50
<b>OPERATIONAL EXPENDITURE VEHICLES.</b>		
Operational Expenditure Vehicle	157,670.00	5,821,208.75
<b>Total</b>	<b>21,307,707.50</b>	<b>31,773,207.36</b>

**Note-18 -****RESEARCH DEPARTMENTS**

Description	2020 Rs.	2019 Rs.
Plant Science	58,069.04	71,642.92
Plant Pathology	41,524.84	71,366.27
Genetics & Plant Breeding	39,190.32	52,917.74
Soils & Plant Nutrition		65,476.54
Raw Rubber & Chemical Analysis	59,200.00	176,949.90
Bio-Chemistry & Physiology	6,699.99	40,915.30
Adaptive Research Unit	92,570.00	51,970.10
Rubber Technology	14,750.00	62,280.99
RRPD & CE Dept	14,900.00	94,534.00
Bio Metry	151,191.50	444,840.26
Polymer Chemistry	45,500.00	70,362.54
Agriculture Economics	18,700.00	22,125.00

**OTHER DEPARTMENTS**

Library & Publication Unit		341,840.72
Director's Office	173,399.99	314,392.64
Internal Audit		33,124.65
Board Office	76,450.00	265,895.53
Administration	272,602.68	788,873.40
Finance (Accounts)	437,726.88	416,143.39
Maintenance (Work Section)	59,962.56	87,469.69
RRI New Advisory Services Dept	60,062.56	44,161.08
Training Centre		
Stores	36,045.80	21,934.68
Audio Visual Unit		53,292.48
<b>TOTAL</b>	<b>1,658,546.16</b>	<b>3,592,509.82</b>

**ADMINISTRATION - GENERAL CHARGES - 2020**

**Note-19 -**

<b>CONTRACTUAL SERVICES</b>	<b>2020 Rs.</b>	<b>2019 Rs.</b>
Legal Expenses	63,851.00	365,097.00
Audit Fees	1,305,055.85	1,523,445.87
IRRDB Expenses		33,663.00
Entertainment Expenses	105,361.00	178,408.54
Entertainment Expenses	187,412.00	331,119.67
Insurance General Covers(Excluding vehicles)	1,003,533.25	1,986,877.98
Welfare and Recreation	293,405.64	332,900.78
BO-Fees for Staff Medical Examini Consul	2,000.00	
Bank Charges		68,104.65
Security Charges - RRI	1,479,677.49	2,030,209.67
Postage	110,575.00	191,944.00
Telephone	6,983,549.02	7,668,350.01
Advertisements	595,512.00	869,426.25
Sundries & Utility Services	761,074.44	200,070.28
Staff Training & Development	80,704.49	4,896,324.37
Fees For Interview Panels	16,250.00	173,482.00
Provident Fund Expenses-RRI Component		
Public Relations	22,288.69	18,506.55
Honorarium to Members Attending AMCOM	34,269.00	39,225.00
Honorarium to Members Attending for Board	523,542.00	640,340.00
General Working Expenses	360,742.89	
Gratuity for the Year	22,448,038.50	24,118,967.50
Staff Gratuity Polgahawela	29,400.00	(30,520.00)
Staff Gratuity Monaragala	176,400.00	100,100.00
Power Supply & Maintenance	10,079,451.49	9,819,086.15
Water Supply & Maintenance	1,205,228.19	1,399,857.93
I.R.R.D.B.(International Rubber Resea	57,750.00	
Revenue Licenses, Insurance Covers, Fitness fees &	277,790.17	336,120.20
External Vehicles Hired	20,767.00	1,414,877.53
Rent & Taxes	697,559.70	48,402.53
Inland Revenue Stamp Duty	2,385.00	3,900.00
Sundry Expenses	450,542.20	859,172.99
RRI/TRI/CRI Symposium		9,515,966.95
Telephone Allowance- Staff	146,975.94	
General Expenses BO	97,230.50	62,771.75
Library & Publication Unit-Working Expenses	19,016.00	1,453,974.22
Guest House - Hostel RRI D/F & Kuruwi	584,315.90	2,700,129.57
Subscriptions	71,670.00	117,310.00
BO-P.F. Maintenance	40,870.00	45,805.00
Administration Sundries		496,816.65
Bad Debtors & Doubtful Debtors	1,278,018.00	(332,308.30)
General Expenses DO	19,247.00	18,572.00
General Expenses OI	4,000.00	10,311.00
NRC Project	-	161,000.00
Rathmalana Stocks A/C Adjusment A/C	82,214.84	173,614.70
Stocks Adjusment A/C	131,425.90	556,860.05
AE-Working Expenses	1,350.00	6,950.00
ARU-Working Expenses	600.00	4,967.00
Working Exp BM	29,665.00	79,295.84
Working Exp G & PB	22,615.41	10,136.00
Working Exp LIB	605,894.75	240,596.83
Working Exp NAS	593,723.74	404,733.25
contractual Services for the Research Support		
<b>Total</b>	<b>53,102,948.99</b>	<b>75,344,962.96</b>

**EXPENDITURE -RESEARCH AND DEVELOPMENT**

**Note -20 Research Departments**

Description	Laboratory Working	Field Working	Total	Laboratory Working	Field Working	Total
	Rs. 2020			Rs. 2019		
Plant Science	143,932.12	2,154,075.65	2,298,007.77	310,945.60	2,432,514.38	2,743,459.98
Plant Pathology	869,311.53	1,217,014.39	2,086,325.92	2,229,006.24	619,844.24	2,848,850.48
Genetics & Plant Breeding	438,230.95	2,323,875.62	2,762,106.57	878,657.34	4,532,617.47	5,411,274.81
AEU-Field Experiments 29.01.05		1,012.50	1,012.50			-
Soils & Plant Nutrition	42,392.16	506,357.20	548,749.36	256,234.58	619,494.06	875,728.64
Raw Rubber & Chemical Analysis	424,137.55	127,916.91	552,054.46	278,385.76		278,385.76
Bio-Chemistry & Physiology	732.23	640,987.98	641,720.21	30,042.33	820,248.49	850,290.82
Adaptive Research Unit	7,840.00	64,186.75	72,026.75	70,610.00	377,618.04	448,228.04
Rubber Technology	320,092.48	153,673.13	473,765.61	262,583.74	5,000.00	267,583.74
RRPD & CE Dept	45,799.55	86,718.75	132,518.30	324,107.47	71,950.00	396,057.47
Bio Metry		107,850.00	107,850.00		4,754.14	4,754.14
Polymer Chemistry	68,358.64	10,687.62	79,046.26	128,699.94	1,000.00	129,699.94
Advisory Services Dept.		291,794.75	291,794.75			-
Negenahira Navodaya	305,413.60		305,413.60	633,485.26		633,485.26
Northern Province Expenses	236,179.17		236,179.17	751,802.21		751,802.21
<b>SUB TOTAL</b>	<b>2,902,419.98</b>	<b>7,686,151.25</b>	<b>10,588,571.23</b>	<b>6,154,560.47</b>	<b>9,485,040.82</b>	<b>15,639,601.29</b>
NSF Expenditure						
EDB Project (Tyre Center) - Ex	318,507.90		318,507.90	70,284.68		70,284.68
NSF Grant No. RG/2015/BT/01-EX			-	294,756.50		294,756.50
N.S.F. Grant RG/2016/AG/01- Expenditures	312,450.98		312,450.98	1,727,675.78		1,727,675.78
NSF Grant RG/2017/AG/01- Expenditures	19,362.57		19,362.57	1,965,023.83		1,965,023.83
ASD - UNDP Joint Project - EX	129,510.61		129,510.61	4,296,426.30		4,296,426.30
New Leaf Disease	751,825.12		751,825.12			
	<b>1,531,657.18</b>	<b>-</b>	<b>1,531,657.18</b>	<b>8,354,167.09</b>	<b>-</b>	<b>8,354,167.09</b>
Vote 23.02.15 Pest & Diseases	3,134,182.54	-	3,134,182.54	8,551,994.99	-	8,551,994.99
Vote 03.63G 60Million Project		-	-	44,137,436.17	-	8,369,978.98
Vote 03.63H Developing A Model Estate		-	-	63,393,114.41	-	44,028,830.61
Vote 03.63K Modification Of Fertilizer Reconn	295,797.83	-	295,797.83	8,369,978.98	-	17,077,259.91
03.63L Finite Element Analysing Center		-	-	44,028,830.61	-	-
Vote 03.63M Accreditation Of RRCA		-	-	17,077,259.91	-	-
<b>SUB TOTAL</b>	<b>3,429,980.37</b>	<b>-</b>	<b>3,429,980.37</b>	<b>185,558,615.07</b>	<b>-</b>	<b>78,028,064.49</b>
Vote 38.02.17 Carban Market	2,081,403.32	-	2,081,403.32	1,630,379.07	-	1,630,379.07
22.01.17 Intercropping	11,012,476.03	-	11,012,476.03	10,573,478.53	5,620,331.14	10,573,478.53
Vote 36.01.17 Low Intensity Harvesting	21,317,399.16	-	21,317,399.16	16,210,932.68	-	16,210,932.68
Vote 23.02.17 White Root Desiases	8,195,977.31	-	8,195,977.31	188,301.71	-	188,301.71
<b>SUB TOTAL</b>	<b>42,607,255.82</b>	<b>-</b>	<b>42,607,255.82</b>	<b>28,603,091.99</b>	<b>5,620,331.14</b>	<b>28,603,091.99</b>
<b>TOTAL</b>	<b>50,471,313.35</b>	<b>7,686,151.25</b>	<b>58,157,464.60</b>	<b>228,670,434.62</b>	<b>15,105,371.96</b>	<b>130,624,924.86</b>

**Note -21 OTHER OPERATING EXPENSES**

<b>Description</b>	<b>2020</b>	<b>2019</b>
	<b>Rs.</b>	<b>Rs.</b>
Medical Centre Labor	855.00	239,530.54
Sanitation		
Roads, Fences & Boundaries	661,159.88	1,490,313.96
Watchmen & Gate Watchers	3,537,501.44	5,879,332.44
<b>Total</b>	<b>4,199,516.32</b>	<b>7,609,176.94</b>

**DARTONFIELD GROUP ESTATE WORKING ACCOUNT FOR THE YEAR ENDED 2020**

**Note 22**

Description	2020		2019	
		Rs.		Rs.
Sales of Rubber		46,436,814.55		39,169,929.61
2020.01.01 Stock	4,654,190.00			4,922,980.00
Purchase	-			
	4,654,190.00		141,129.63	44,092,909.61
2020.12.31 Stock	6,574,825.00	1,920,635.00		(4,654,190.00)
Gross Profit		48,357,449.55	268,790.00	39,438,719.61
<b>Add :-</b>				
Sundry Receipts	65,150.00		-	
Rubber Replant Subsidy	3,661,791.88		242,372.00	
Tea Green Leaf Sale	1,423,300.00		167,547.63	
Other Receipts	200,494.50		-	
Rain Guard Subsidy	1,721,675.00		-	
Fine (penalty)	16,210.00		-	
Intererop Subsidy	553,877.50		-	
Raw Scrap income -	3,184,952.50		-	
Over Provision of Gratuvity	387,854.98		-	
Sales OF Fire Wood - DF	254,225.00	11,469,531.36	-	141,129.63
		59,826,980.91		39,579,849.24
<b>Less :</b>				
<b>Expenses</b>				
Wages, Salaries and employee benefits (Note 14A)	45,632,624.01		40,013,571.99	
Supplies and Other consumables used (Note 14A)	2,323,317.25		2,822,819.87	
Depreciation and amortization expenses (Note 14A)	5,013,935.54		(2,240,333.38)	
Maintenance of property, plant and equi (Note 14A)	3,742,789.07		5,116,650.19	
Other expenses (Note 14A)	3,146,243.07		1,772,330.55	
Finance Costs (Note 14A)	583,645.90	60,442,554.84	477,268.04	47,962,307.26
Other Expenditure Estate (Projects) (Note 14A)		-		-
<b>Other Expenditure Projects</b>				
Tea Green Leaf Expenditure				
DE-Sanitations – Cost of sweepers Eel Co			428,995.69	
1980/93 Rubber Field Ex.		-		428,995.69
Surplus for the period		<b>(615,573.93)</b>		<b>(8,811,453.71)</b>

**Kuruwita Estate Working Account for the Year Ended 2020**

**Note 23**

Description	2020		2019	
		Rs.		Rs.
<b>Revenue</b>				
Sales of Latex & Scrap		25,054,571.12		20,699,322.98
2020.12.31 Stock		741,786.50		
		25,796,357.62		
<b>Other Revenue</b>				
<u>Add :-</u>				
Sundry Receipts	101,472.00		6,089,190.00	
Rubber Replanting Subsidy	1,110,980.00			
Sundry Income	45,153.00		183,971.00	
Sales of Rubber Scrap	1,449,051.60			
Tea Green Leaf Income	1,267,268.31			
		3,973,924.91		6,273,161.00
<b>Total Revenue</b>		29,770,282.53		26,972,483.98
<b>Less :</b>				
<b>Expenses</b>				
Wages, Salaries and employee benefits (Note 14B)	20,270,187.07		19,407,581.49	
Supplies and consumables used (Note 14B)	1,194,743.58		1,429,708.73	
Depreciation and amortization expenses (Note 14B)	1,404,797.73		(865,442.36)	
Maintenance of Property, Plants & Equip (Note 14B)	2,602,547.95		3,153,883.53	
Other expenses (Note 14B)	1,830,475.33		317,116.51	
Finance Costs (Note 14B)	208,026.24	27,510,777.90	176,339.58	23,619,187.48
Rubber Replanting Kuruwita			189,510.65	
Cinnamon New planting Expenditure-KW		-	500,960.21	690,470.86
<b>Surplus for the Period</b>		<b>2,259,504.63</b>		<b>2,662,825.64</b>

**KUMARAWATTA ESTATE WORKING ACCOUNT FOR THE YEAR ENDED 2020**

**Note 24**

Description	2020 Rs.	2019 Rs.
Sales of Income	959,178.38	
Rubber Re-Planting Subsidy		-
<u>Less :-</u>		
Wages, Salaries and employee benefits	6,772,664.02	5,973,214.54
Supplies & Other Consumables used (Note 14C)	602,651.57	(220,198.11)
Other Expenses	119,969.00	(866,025.51)
Nursery Project Monaragala		(10,687.50)
<b>Loss for the Year</b> Rs.	<b>7,495,284.59</b>	<b>4,876,303.42</b>

**NARAMPOLA ESTATE WORKING ACCOUNT FOR THE YEAR ENDED 2020**

**Note 25**

Description	2020 Rs.	2019 Rs.
Rubber Sales	4,291,722.75	229,180.08
Other Sales	30,375.00	-
	4,322,097.75	229,180.08
<u>Less :-</u>		
Wages, Salaries and employee benefits	(4,515,760.69)	-
Supplies & Other Consumables used (Note 14C)	(969,368.72)	(169,689.50)
Other Expenses	(85,922.41)	(93,169.39)
Rs.	<b>(1,248,954.07)</b>	<b>(33,678.81)</b>



**NSF GRANTS OF SCHEDULES TO THE ACCOUNTS FOR THE YEAR ENDED 31.12.2020**

**Note 26**

<b>Description</b>	<b>Votes No.</b>					
	<b>03.30X</b>	<b>03.30I</b>	<b>03.30U</b>	<b>03.30Y</b>	<b>42.01.15</b>	<b>Total</b>
Opening Balance	1,805,865.52	356,001.00	386,761.71	2,593,853.39	9,980,107.00	15,122,588.62
<b>Add :</b>						-
Fund Received	519,424.00			198,000.00		717,424.00
						-
	<b>2,325,289.52</b>	<b>356,001.00</b>	<b>386,761.71</b>	<b>2,791,853.39</b>	<b>9,980,107.00</b>	<b>15,840,012.62</b>
<b>Less :</b>						
Adjustment for the year	2,040,126.76	-	386,761.71	2,182,386.40	4,425,936.91	9,035,211.78
						-
	<b>2,040,126.76</b>	<b>-</b>	<b>386,761.71</b>	<b>2,182,386.40</b>	<b>4,425,936.91</b>	<b>9,035,211.78</b>
<b>Balance as at 31.12.2019</b>	<b>285,162.76</b>	<b>356,001.00</b>	<b>-</b>	<b>609,466.99</b>	<b>5,554,170.09</b>	<b>6,804,800.84</b>

NSF GRANTS OF SCHEDULES TO THE ACCOUNTS FOR THE YEAR ENDED 31.12.2020

**Note 26B**

Description	Vote 23.02.15 Pest & Dieases	Vote 03.63G 60Million Project	Vote 03.63H Developing A Model Estate	Vote 03.63K Modification Of Fertilizer Recomm	03.63L Finite Element Analysing Center	Vote 03.63M Accreditation Of RRCA	Vote 03.63 P EDB Project (Tyre Center)	Total
Opening Balance	7,033,558.87	65,995,804.47	76,704,452.99	26,890,166.82	49,772,590.00	18,000,000.00	25,000,000.00	269,396,573.15
<b>Add :</b>								-
Fund Received	7,620,000.00		15,200,000.00	1,500,000.00			23,151,271.09	47,471,271.09
	<b>14,653,558.87</b>	<b>65,995,804.47</b>	<b>91,904,452.99</b>	<b>28,390,166.82</b>	<b>49,772,590.00</b>	<b>18,000,000.00</b>	<b>48,151,271.09</b>	<b>316,867,844.24</b>
<b>Less :</b>								
Expenditure -R&D	11,824,991.61	14,814,428.17	31,338,621.05	2,402,916.81	7,344,264.61	548,327.00	388,792.58	68,662,341.83
Expenditure -Capital (Differed )			24,753.60				1,789,699.98	1,814,453.58
Expenditure -Total	11,824,991.61	14,814,428.17	31,363,374.65	2,402,916.81	7,344,264.61	548,327.00	2,178,492.56	70,476,795.41
<b>Balance as at 31.12.2019</b>	<b>2,828,567.26</b>	<b>51,181,376.30</b>	<b>60,541,078.34</b>	<b>25,987,250.01</b>	<b>42,428,325.39</b>	<b>17,451,673.00</b>	<b>45,972,778.53</b>	<b>246,391,048.83</b>

**RUBBER RESEARCH BOARD OF SRI LANKA**

**SCHEDULE TO THE STATEMENT OF FINANCIAL PERFORMANCE AS AT 31ST DECEMBER 2020**

**INVENTORIES/ STOCKS - RRI**

**SCHEDULE 01**

	<b>2020</b>	<b>2019</b>
	<b>Rs.</b>	<b>Rs.</b>
Unsold Stock - Dartonfield	6,574,825.00	4,654,190.00
Unsold Stock - Kuruwita	741,786.50	
Stock - Rathmalana	1,051,960.34	1,152,728.86
Stationary	535,584.59	605,380.83
Stock - General	7,313,673.87	8,192,246.86
Stock in obsolete	489,004.07	489,004.07
Non Moving Stock	434,249.35	434,249.35
Monaragala Stock	125,794.00	160,854.00
polgahawela Stock	4,925.00	69,411.00
<b>Total</b>	<b>17,271,802.72</b>	<b>15,758,064.97</b>

**SCHEDULE 02 - KURUWITA ESTATE STOCK**

Fertilizer	2020		2019	
	Qty.(kg)	Rs.	Qty.(kg)	Rs.
Fomic acid			35	11,639.15
L.P.Gas	1	1,524.00	1	1,524.00
Polythene			496.9	159,642.92
Poly bags	10000	43,411.20	10000	43,411.20
Tapping Knives	1	565.00	1	565.00
Timber	160.91	37,042.17	160.91	37,042.17
Petrol	20	2,740.00	20	2,922.32
Equl Broom			1	133.54
Sulphur	750	66,000.00		
Urea	150	2,786.93	150	2,786.93
M.O.P	150	2,786.93	150	2,786.93
Dolomite	3900	34,240.24	500	43,897.75
U 709			1000	21,666.67
Cinnamon Mixture	400	8,431.82	1000	21,079.55
Firewood			7	2,422.10
<b>Total</b>		<b>199,528.29</b>		<b>351,520.23</b>

**SCHEDULE03 - STOCK VALUE - DARTONFIELD ESTATE**

Item	2020		2019	
	Qty (Kg)	Value (Rs)	Qty (Kg)	Value (Rs)
Formic Acid	35	1,407.28		
Dolomite		-		
Glyphosate	17	62,799.18		
Sodium bi Sulphate	25	7,515.47		
RU 465 N.P.K.		-		
Tar	2835	167,268.59	2835 Ltrs	167,268.59
Coir Brooms				
China clay	100	16,686.52	100 Kg	16,686.52
Poly Bags	28750	71,105.43	28750 Nos	71,105.43
Poly bags 26 x 36	4800	103,680.00		
Etherral	45	103,378.77		
Fire Wood		-	16 Yrds	28,660.21
Eckel Brooms		-		
Polythene rain guard	237 Kg	79,180.20	2725 Kg	860,341.87
Timber 3" x 4"				
Timber 3" x 5"				
Timber				
Timber 2" x 4"				
Timber 2" x 2"				
Timber 1" x 9"	1,467.7 Ft	51,803.25	1,467.7 Ft	51,803.25
Timber 1 1/8" x 4"				
Timber 2" x 1"				
Timber 2" x 2.5"				
Timber 1" x 1/8"				
Timber 2"x 1 1/2"				
Gutter Box				
Gutter (Color)				
U.709	450	21,770.85		
Rain guard sealent	30	82,620.00	505 Kg	58,941.80
LDPE 600X300Polythene				
Fertilizer			1233	55,200.37
<b>Total</b>		<b>769,215.54</b>		<b>1,310,008.04</b>

**SCHEDULE 04****DEPOSITS**

<b>Description</b>	<b>2020 Rs.</b>	<b>2019 Rs.</b>
Telecom	6,000.00	6,000.00
Electricity	90,500.00	90,500.00
Post Master General	4,922.57	50,327.57
New Bambalapitiya Service Station	4,000.00	4,000.00
Ceylon Oxygen Co. Ltd.	113,316.00	113,316.00
Tender	2,000.00	2,000.00
Lanka Filling station-Narahenpita	15,000.00	15,000.00
Leo Freight Services(Pvt) Ltd	3,801.00	3,801.00
M.P.C.S. Matugama (Fuel)	300,000.00	300,000.00
M.P.C.S. Moratuwa (Fuel)	50,000.00	50,000.00
S.P.Lanka Petroleum (Pvt) Ltd	70,000.00	70,000.00
B.K.S. Filling Station,Moratuwa	50,000.00	50,000.00
Samaranayake & Samaranayake		
<b>Total</b>	<b>709,539.57</b>	<b>754,944.57</b>

<b>SCHEDULE 05</b>		
<b>Description</b>	<b>2020 Rs.</b>	<b>2019 Rs.</b>
<b>OTHER DEBTORS</b>		
Mr.Thurul Warnakula	936,278.34	936,278.34
Mr.D.E.D.E.I.N.Perera	350,000.65	350,000.65
	<b>1,286,278.99</b>	<b>1,286,278.99</b>
<b>TRADE DEBTORS</b>		
General Debtors	<b>433,136.69</b>	<b>566,224.71</b>
<b>SUNDRY DEBTORS</b>		
Provident Fund Control A/C RRI	100,043.65	(226,902.09)
Interest Receivable	-	11,132.88
Handy Craft Project	57,235.25	57,235.25
Fund Receivable from Model Estate Project	-	4,115,698.66
Other Receivables	-	795,790.00
<b>Total</b>	<b>157,278.90</b>	<b>4,752,954.70</b>
<b>LOAN RECEIVABLES</b>		
	<b>2,020.00</b>	<b>2019</b>
Motor Car / Motor Car Repair Loan	27,500.00	76,250.00
Motor Cycle Loan	20,833.25	29,166.55
Personal/Distress/Study Loan	67,500.00	238,580.96
New Personal Loan	4,595,562.67	4,307,614.95
Staff Medical Fund Loan	107,413.00	(35,327.00)
Loan Receivables - Disaster Loan		106,151.68
<b>Total</b>	<b>4,818,808.92</b>	<b>4,722,437.14</b>
<b>Note</b>		
<b>Bond Debtors</b>	<b><u>Balance as at 31.12.2020</u></b>	<b><u>Balance as at 31.12.2019</u></b>
H. H. Thalgawatta	38,402.56	38,402.56
B.P.Weera rathna	1,825,654.55	1,825,654.55
SMCE Silva	1,635,005.85	1,635,005.85
Nalinda P Wicramasinghe	10,643.54	10,643.54
G.V.L.Nilmini	-	-
<b>Total</b>	<b>3,509,706.50</b>	<b>3,509,706.50</b>

**SCHEDULE 06****DOUBTFUL DEBTORS**

Rs

Period of outstanding	Description	Balance	Provision Made	Provision
Up to 2015	Other Debtors	1,286,278.99	100%	1,286,278.99
	General Debtors	433,136.69	Nil	
	General Debtors (Staff)	109,069.75	Nil	
Less than o1 Year	General Debtors	59,612.32	Nil	
	Debtors	157,278.90	Nil	
2015 to 2019	General Debtors	264,454.62	5%	13,222.73
	Debtors	4,752,954.70	Nil	-
Up to 2015	Debtors	14,921,778.14	100%	14,921,778.14
<b>Total</b>		<b>21,984,564.11</b>		<b>16,221,279.86</b>



**KURUWITA ESTATE TRADE & OTHER RECEIVABLE**  
**TRADE & OTHER RECEIVABLE**

**SCHEDULE 07**

Description	2020	2019
	Rs.	Rs.
Check Roll Debts	19,578.39	35,959.84
Festival Advance ( Staff)	-	127,400.00
Deposit A/c	21,788.00	21,788.00
Postage	313.00	313.00
St.Joachime Estate	165,716.59	76,840.28
Sundry Debtors	9,176.49	9,176.49
Electricity Bills Receivables	5,435.76	6,743.44
Book Allowance	400.00	400.00
Advisory Service	117,768.40	32,453.22
G&PB Dept	148,288.74	110,657.74
P.S. Dept VOTE 99	554,299.86	375,204.64
P.S. Dept VOTE 20 - KW	67,722.18	-
P.S.DEPT - Perrenial crop	87,094.85	69,760.38
P.S.DEPT Density trial	135,205.61	50,440.61
PAYMENT ADVANCE	3,230.00	3,230.00
P.P. Dept	55,599.71	90,782.74
P.S. Dept Vote No 4	32,535.70	24,340.33
SOILS & PN Dept	16,311.52	948.66
J.D & SONS	4,221,145.13	-
Rain Gard Subsidy receivabla	524,205.00	-
Festival Advance - Kuruwita	1,400.00	-
Personal Loan - Kuruwita	10,000.00	-
	<b>6,197,214.93</b>	<b>1,036,439.37</b>

**DARTONFIELD ESTATE**  
**TRADE & OTHER RECEIVABLE**

Description	2020	2019
	Rs.	Rs.
Check Roll debtors	70,278.68	53,787.06
Deposit A/c (Df)	2,690.00	2,690.00
J.D. & Sons	148,806.38	-
National Institute of Plantation Management	66,066.14	66,066.14
Postage Stamp	140.00	140.00
Pry Month Rubber Industries	6,100.00	6,100.00
Tamil Festival Advance	-	12,300.00
Vogen Estate	13.57	125,034.95
Festival Advance Christmas	400.00	18,809.09
Factory chemical Balance	57,339.30	26,226.91
Co-Operative Society	16,125.00	16,125.00
Special Salary advance	46,189.36	46,189.36
Special Festive Advance	4,550.00	4,550.00
Kuruwita Sub Station	-	2,132,040.85
Festival Advance 18/19 (Df)	765.37	354,763.88
Payment in advance	12,000.00	70,000.00
Festival Advance -Deepavali	-	562,000.00
Other Receivable	795,790.00	-
Festival Advance - Sinhala	8,300.00	2,400.00
Recevable A/c	-	2,088,776.48
Funaral Funds	200.00	200.00
Elhena Tea Factory	166,050.00	65,420.00
Polgahawela Sub Station	1,677,899.27	1,105,710.09
JD & SONS (PVT) LTD	-	3,472,036.79
Festival Adv Sinhala -DF	73.98	-
Festival Advance Christmas 19/20 -DF	17,000.00	-
Festival Advance Christmas 20/21 -DF	30,000.00	-
Festival Advance Deepawali 20/21 -DF	576,000.00	-
Festival Advance Sinhala -DF	2,750.00	-
Model Estae Project Recevable	884,485.60	-
Festival Advance Tamil 19/20-DF	1,001.56	-
Receivables -DF	8,189,665.67	-
	<b>12,780,679.88</b>	<b>10,231,366.60</b>

**CREDITORS 2020**

**SCHEDULE 08**

<b>Description</b>	<b>2020 Rs.</b>	<b>2019 Rs.</b>
Creditors Ledger Control A/C (C L C)	1,002,909.39	6,151,641.71
<b>SUNDRY CREDITORS</b>		
Biometry Project - Climate Change on Rubber	5,637.68	5,637.68
Canteen Deposits	13,500.00	13,500.00
Carbon Market Project	118,108.57	118,108.57
Centre for Poverty Analysis	1,841.25	1,841.25
Contract Deposits	15,350.00	15,350.00
Divineguma B461	1,063,933.42	1,063,933.42
G.S.I.Mapping of Tea & Rubber Lands on Galle Dis.	155,000.00	155,000.00
Humate Plus Experiments	22,101.50	22,101.50
I.R.R.D.B.Plant Breeding Workshop	294,552.18	294,552.18
Insurance Claim Received	19,285.71	19,285.71
Intercropping Research (Sadaharitha Plantation)	87,243.75	87,243.75
Medical Fund Reserve RRI Staff	1,104.50	709.00
Moratuwa University	1,025,768.00	1,025,768.00
National Science Foundation NSF/RAP/2001/RRI/01	705.96	705.96
National Workers Congress	67,497.50	67,497.50
NSF - SIDA/98/EP01	95,014.85	95,014.85
Payee Tax	282,590.56	412,240.56
Plant Science Intercropping Unit (Essex U.K)	21,731.55	21,731.55
Ministers Visit	328,819.09	-
Postgraduate Institute of Peradeniya	24,640.00	24,640.00
Provident Fund Account - RDD	-	242,328.00
R.D.D.Kegalle	23,318.75	23,318.75
RDD (Salary Arrears)	92,837.57	92,837.57
RDD Nursery - Gampaha	45,000.00	45,000.00
RDD Staff Payments & Recoveries Control A/C	1,621.72	1,621.72
Receipt in Adv(Welfare)	595.00	595.00
Receipt in Advance (stamp)	271,645.00	271,645.00
Receipt-in -Advance A/C (J.I C.A)	208,297.09	208,297.09
Ru: Ban: Intercropping Programme Ecology UK (D F I D)	542,618.53	542,618.53
Staff Fire Wood A/C	10,813.24	10,813.24
Tender Deposits	2,864,399.69	4,262,480.81
Vitex Project	9,288.79	9,288.79
White root Diseases Research Project Sweden	25,717.80	25,717.80
Sundry Creditors	848,814.26	2,694,065.04
Creditors Clearance A/C	4,455,765.03	4,455,765.03
Staff Creditors	303,527.13	345,390.23
Sloar Assisted Sheet Rubber Dryer	275,000.00	275,000.00
Receipt In Advance - Sundries	16,338.28	16,338.28
<b>Total</b>	<b>14,642,933.34</b>	<b>23,119,624.07</b>
<b>PAYABLE</b>		
Abetment - Payable A/C	2,670.00	6,650.00
Retention Payable A/C	4,624,491.19	6,992,986.85
Lease Rental Payable A/C Kumarawatta, Narampola	5,693.20	5,693.20
Payable	<b>4,632,854.39</b>	<b>7,005,330.05</b>

**SCHEDULE 09 - KURUWITA - PAYABLES**

<b>Description</b>	<b><u>2020</u> <u>Rs.</u></b>	<b><u>2019</u> <u>Rs.</u></b>
Check Role Wagers - Kuruwita	1,346,640.00	1,057,580.00
Sri Lanka Telecom Ltd	7,242.71	4,699.84
EPF Payable	411,667.81	385,508.52
ETF Payable	56,136.54	52,569.38
Holiday Pay	704,680.00	703,170.00
Attendance Bonus	43,053.17	45,012.50
Dartonfield Group	-	704,446.05
Ceylon Electricity Board	32,362.52	30,139.17
L.K.S.Rubber Stores	-	31,060.00
Palawela Rubber Stores	35,300.00	10,250.00
Prasad Hardware	7,528.00	10,213.00
Kuruwita M.P.C.S	44,842.00	45,515.00
Vishwa Shakthi Welfare	-	38,400.00
Accrued expenditure	20,751.45	20,751.45
Un paid coins A/C	51,863.86	51,217.62
Sundry Creditors	50,360.00	29,080.00
Palanda Hardware	-	19,156.00
Personal Bank Loan	125,040.00	173,800.00
Nidahas Sewaka Sangamaya	-	120,810.00
Chamanex PLC	-	44,453.07
New kuruwita Traders	1,200.00	1,800.00
Society - Kuruwita	26,610.00	-
<b>Total</b>	<b>2,965,278.06</b>	<b>3,579,631.60</b>

**DARTONFIELD ESTATE**

**SCHEDULE 10 - PAYABLES**

Description	Rs. 2020	Rs. 2019
Attendance Bonus	124,100.00	131,800.00
Agalawatta Auto Service	15,120.00	23,150.00
C.P.M.S.U.	2,100.00	14,300.00
C.S.C.& W.U.	-	570.00
Chanlo Hardware	8,265.00	30,655.00
Check Roll Debts	4,683,780.00	5,029,490.00
Commission on Cash Transport	145,187.72	115,156.49
E.P.F.	1,467,974.76	1,486,396.52
E.T.F.	200,178.39	202,690.47
L.J.E.W.U.	6,900.00	32,232.00
Holiday Pay	2,209,141.12	2,113,532.52
Janatha Fertilizer Enterprises	298,577.50	298,577.50
Kovil Fund - Dartonfield	3,500.00	18,000.00
Kovil Fund - Galewatta	28,700.00	25,400.00
National Savings Bank	5,025.00	21,300.00
New Paper Agent	1,090.00	3,410.00
NUW	466.66	1,200.00
PND Construction Pvt Ltd	8,050.00	8,050.00
Poly pac secco Ltd.	688,781.28	688,781.28
Fund Receivable from Model Estate Project	466,953.68	-
Welfare Society	5,400.00	15,800.00
Unpaid Wages	260,862.35	226,343.96
Refundable Deposits	42,796.00	42,796.00
RRI Canteen	13,490.00	13,490.00
Samaranayaka & Samaranayaka	500.00	500.00
Sri Lanka Nidahas Sewaka San	750.00	4,650.00
State Mortgage Bank	80,290.00	80,290.00
Sundry Creditors	170,167.41	41,540.00
Unpaid coins	3,877.34	3,736.86
Vishwashakthi Welfere	23,900.00	44,400.00
Bus Fair deduct	1,950.00	-
Wijegunawardana & Sons	18,235.00	59,530.00
Chemenex PLC	140,065.44	32,559.10
Personal Loan Staff	2,766.87	2,766.87
Welfare Society GW	9,200.00	43,200.00
Checkroll - Polgahawela	310,440.00	-
Narampola EPF Payable	59,595.80	-
Narampola ETF Payables	8,126.70	-
Narampola Union	3,900.00	-
	<b>11,520,204.02</b>	<b>10,856,294.57</b>

**Schedule 11****Accrued Expenses**

Description	Rs.	Rs.
	2020	2019
Accrued Expenses	3,830,862.51	4,828,925.52
Suppliers Payable A/C	3,709,001.50	7,362,977.08
Contract Payable A/C	16,527,106.69	37,027,564.96
Other Paybles	66,100.00	6,631.00
B.O.C.-Agalawatta-ARC	26,832.71	26,832.71
Cancelled Cheque - Payble A/C	12,306.00	12,306.00
Cost of Living Payble A/C -2006-2011	-	480,860.00
Dialog Axiata PLC-ARC	4,489.55	4,489.55
E.P.F.-ARC	2,861.42	2,861.42
Kanrich Finance Ltd	9,000.00	9,000.00
Mr.L.P.P.Vitharana-ARC	1,800.00	1,800.00
Mr.R.A.D.Ranawake-ARC	15,799.82	15,799.82
Mrs.W.D.D.Prasadini-ARC	3,000.00	3,000.00
Newchattel Estate-Neboda-ARC	229,513.70	229,513.70
Receipt in Advance - Insurance	317,011.93	-
	<b>24,755,685.83</b>	<b>50,012,561.76</b>

**Schedule 12 OTHER CAPITAL GRANTS**  
**Other Capital Grants**

Accumulated Fund	Value as at 31.12.2019 Rs.	Value as at 31.12.2020 Rs.
O.D.A. Grant	5,606.79	5,606.79
Government Grant	1,556,097.28	1,556,097.28
Australian Grant	165,221.00	165,221.00
World Bank Grant	4,739,779.82	4,739,779.82
UNDP Grant	2,571,866.95	2,571,866.95
UNICEF Grant	10,000.00	10,000.00
CRI /TRI Grant	334,058.64	334,058.64
NARESA Grant	1,345,912.39	1,345,912.39
UNDP Research Grant	2,510,441.46	2,510,441.46
Tea Board Grant	445,343.40	445,343.40
SRRP I Grant	12,624.52	12,624.52
ARP Project	4,578,055.64	4,578,055.64
CARP Grant	54,738.94	54,738.94
Treasury Grant (Motor Vehicles)	15,375,000.00	15,375,000.00
Medicinal Plant Project Grant	15,624.46	15,624.46
NERESA Grant	5,600.00	5,600.00
SRRP II - Grant	7,644,391.73	7,644,391.73
Treasury Grant (Capital)	8,893,721.84	8,893,721.84
N.S.F. Grant	1,487,616.70	1,487,616.70
D.F.I.D. Grant	49,151.93	49,151.93
Staff Grant Comfort room	10,272.93	10,272.93
European Union Grant	9,693.90	9,693.90
Centre for Poverty	2,221.03	2,221.03
Environment Project Phase II	3,489.70	3,489.70
Climate Change Project	3,445.16	3,445.16
3rd Symposium Grant	24,621.87	24,621.87
A.F.National Research Council	329,781.12	329,781.12
Divineguma	545,240.32	545,240.32
International Foundation for Science	73,536.00	73,536.00
Agricultural Research	12,542,595.30	12,542,595.30
Special Project Other Grant	8,958,000.00	8,958,000.00
NSF and Other Grants (Total) - Note 38A	6,804,800.84	6,804,800.84
Special Capital Project - MPI- Note 38B	246,391,048.83	246,391,048.83
	<b>327,499,600.49</b>	<b>327,499,600.49</b>

***Labour rates and break down of cost of production from 2016 to 2020 (Rs/Kg) in Dartonfield estate***

	<b>2016</b>	<b>2017</b>	<b>2018</b>	<b>2019</b>	<b>2020</b>
1. Labour rate	687.50 up to Sept. and 805 from Oct.	805.00	805.00	805.00 up to Jan. and 855.00 from Feb.	855.00
2. Cost of production	241.13	280.55	268.43	330.91	300.90
2.1 Tapping cost	116.46	122.27	115.63	139.94	138.17
2.2 Manufacturing	32.35	34.47	33.08	35.35	38.94
2.3 General charges	74.43	97.29	98.10	124.18	94.87
2.4 Field & cultivation cost	17.89	26.02	21.62	31.44	28.92
3. N.S.A.	234.84	319.00	255.44	276.22	333.73
4. Profit per kg	(6.29)	38.45	(12.99)	(54.69)	32.83

***Labour rates and break down of cost of production from 2016 to 2020 (Rs/kg) in Kuruwita estate***

	<b>2016</b>	<b>2017</b>	<b>2018</b>	<b>2019</b>	<b>2020</b>
Labour rate	687.50 up to Sept. and 805 from Oct.	805.00	805.00	805.00 up to Jan. and 855.00 from Feb.	855.00
Cost of production	179.27	250.01	279.36	337.71	292.36
Tapping cost	89.65	99.08	108.80	134.74	137.41
Manufacturing	21.49	32.65	36.33	33.11	37.12
General chargers	54.48	92.38	97.16	135.40	89.49
Field & cultivation cost	13.65	25.90	37.07	34.47	28.35
N.S.A	217.11	294.18	244.89	263.54	311.69
Profit per kg.	37.84	44.17	(34.47)	(74.17)	19.33